

Technical specification:

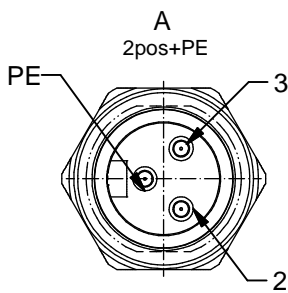
| | |
|---|---|
| Rated voltage: IEC 60664-1 | 2PE 4PE 300 V 300V |
| Overvoltage category: IEC 60664-1 | 2 |
| Overvoltage: IEC 60664-1 | 2,7 kV |
| Current rating: IEC 60664-1 | 2PE 4PE 16 A 16 A |
| Insulation resistance: IEC 60512 | >=100 MΩ |
| Pollution degree: IEC 60664-1 | 3/2 |
| Degree of protection: IEC 60529 | IP 67, in mated condition |
| Temperature range: EN 60512-11-10 EN 60512-11-4 | -30°C ... +85°C -40°C -40°C ... +85°C |
| Mating cycles: IEC 60512-9a | >=100 |
| Termination: | crimped |

Wire specification:

| | |
|----------------------------|------------------|
| Temperatur range static | -30°C ... +105°C |
| flexibel | -10°C ... +105°C |

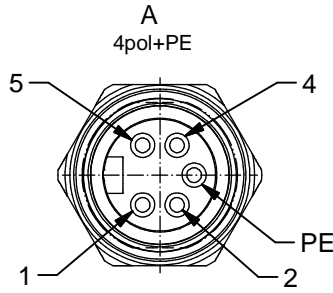
Materials:

| | |
|------------------|---------------------------|
| Contact: | CuZn, Ni b / Au 0,2 gal. |
| Contact carrier: | TPU, UL 94 HB |
| Sealing: | FPM |
| Socket housing: | CuZn, nickel plated |
| Grouting: | Polyurethane-resin, UL 94 |



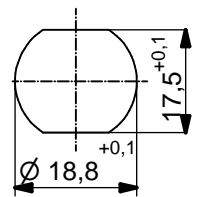
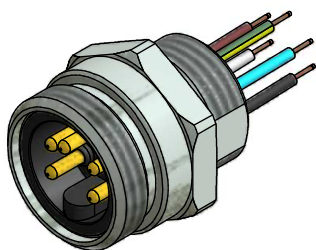
Contact assignment:

- PE ■ green-yellow
- 2 ■ brown
- 3 ■ blue



Contact assignment:

- 1 ■ black
- 2 ■ blue
- PE ■ green-yellow
- 4 ■ brown
- 5 ■ white



Minimum wall thickness
2,5mm, alternativ panel
cut-out d=18,8

| Part no: | Description: | Pos | Length L: | Wire: |
|----------|------------------------------------|-----|-----------|----------------|
| 41-40121 | SAL - 7/8 - FS2PE - 0,5 / 250 - 11 | 3 | 0,5m | AWG 14 PVC, UL |
| 41-40122 | SAL - 7/8 - FS4PE - 0,5 / 250 - 11 | 5 | 0,5m | |

| | | | | | | | | | | |
|--|---|--|----------|--|------|------|-------|----------|----------|-------|
| DO NOT ALTER CAD DRAWING BY HAND RoHS & REACH compliant | dim. in mm | title: Male socket 7/8" with wire, frontmounting, PG11 | | | | | | | | |
| | <table border="1" style="font-size: 8px;"> <tr> <td></td> <td>date</td> <td>name</td> </tr> <tr> <td>drawn</td> <td>10.06.15</td> <td>Böckeler</td> </tr> <tr> <td>appd.</td> <td>10.06.15</td> <td>Mankopf</td> </tr> </table> | | | | date | name | drawn | 10.06.15 | Böckeler | appd. |
| | | date | name | | | | | | | |
| | drawn | 10.06.15 | Böckeler | | | | | | | |
| appd. | 10.06.15 | Mankopf | | | | | | | | |
| tolerance of wire: L <= 0,5m: L + 20mm L > 0,5m: L + 4% | dwg no: <div style="text-align: center; font-size: 16px; font-weight: bold;">41K1A571</div> | | | | | | | | | |
| general tolerance: 0 ± 0,50mm 0,0 ± 0,25mm 0,00 ± 0,10mm * ± 1,5° | | | | | | | | | | |
| THIS DRAWING MAY NOT BE COPIED OR REPRODUCED IN ANY WAY, AND MAY NOT BE PASSED ON TO A THIRD PARTY WITHOUT WRITTEN PERMISSION. OWNERSHIP AND COPYRIGHT OF CONEC GmbH | | part no: <div style="text-align: center; font-size: 16px; font-weight: bold;">see table</div> | | | | | | | | |

X-ON Electronics

Largest Supplier of Electrical and Electronic Components

Click to view similar products for [Circular Metric Connectors](#) category:

Click to view products by [CONEC](#) manufacturer:

Other Similar products are found below :

[600X518037X](#) [6STD15PCR99B70A](#) [8R4000A16M020](#) [8R5000A16M005](#) [1200910002](#) [1203580030](#) [1200910008](#) [1200910011](#) [1300140094](#)
[130203-0054](#) [1300140026](#) [1300150099](#) [RF-12S1N8A90DU](#) [1-3637-600-5205](#) [1612618](#) [21036836414](#) [8R4006A16M010](#) [8R5006A18A120](#)
[1604232](#) [1R3006A20M005](#) [RF-12P1N8A80DU](#) [RF-12P1N8A90DU](#) [41-40011](#) [42-01015](#) [4-22279-4](#) [4-22281-1](#) [4-22284-9](#) [43-01088](#) [43-](#)
[01203](#) [41-40013](#) [42-00008](#) [43-00343](#) [43-01032](#) [43-01162](#) [43-10000](#) [600X518050X](#) [SACC-DSI-FS-5P-PG9-L180 SC](#) [8R5006A16M020](#)
[8R5006A16M005](#) [8R4000A16M010](#) [6-22279-3](#) [1605332](#) [N03FA03144](#) [1300140077](#) [43-01338](#) [XS2RD4265](#) [RSC 4/9](#) [XS2R-D426-1](#)
[XS8A-0441](#) [859RD04-103R004](#)