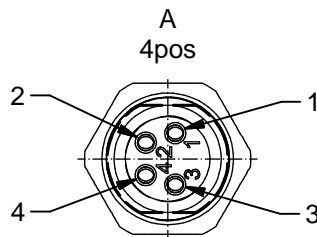


Contact assignment:

- 1) brown
- 3) blue
- 4) black



Contact assignment:

- 1) brown
- 2) white
- 3) blue
- 4) black

Technical specification:

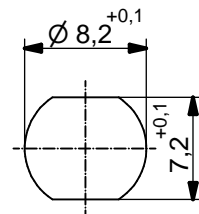
Rated voltage: IEC 61076-2-104	3pos 4pos 60 V 30V
Current rating: IEC 61076-2-104	3/4pos 3A bei 40°C
Insulation resistance: IEC 60512	>=100 MΩ
Pollution degree: IEC 60664-1	3/2
Degree of protection: IEC 60529	IP 67, in mated condition
Temperature range: IEC 60664-1	-30°C ... +80°C
Mating cycles: IEC 60512-9a	>=100

Materials:

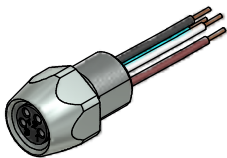
Contact:	CuZn
Contact plating:	Nickel, gold plated
Contact carrier:	TPU GF, UL 94
Sealing:	NBR
Socket housing:	CuZn, nickel plated
Grouting:	Polyurethane-resin, UL 94

Installation specification:

recommended torque:	0,6-0,8 Nm
Conec installation tool:	torque wrench: 36-000200 insert across flats 10: 36-000270



Minimum wall thickness
1,5mm, alternativ panel
cut-out d=8,2



Part no:	Description:	Pos	Length L:	Wire:
42-01000	SAL - 8 - FK3 - 0,2	3	0,2m	AWG 24 PVC, UL
42-xxxxx	SAL - 8 - FK3 - ...	3	x	
42-01001	SAL - 8 - FK4 - 0,2	4	0,2m	
42-xxxxx	SAL - 8 - FK4 - ...	4	x	

DO NOT ALTER CAD DRAWING BY HAND Directive 2002/95/EC RoHS compliant	Index: d 03.05.11 VF Ä3914 technical specification modified, sleeve side B removed, data sheet revised	dim. in mm	title: Female socket M8x1 with wire, frontmounting										
	tolerance of wire: L ≤ 0,5m: L + 20mm L > 0,5m: L + 4%	<table border="1" style="width: 100%; border-collapse: collapse;"> <tr> <td></td> <td style="font-size: 8px;">date</td> <td style="font-size: 8px;">name</td> </tr> <tr> <td style="font-size: 8px;">drawn</td> <td style="font-size: 8px;">17.09.08</td> <td style="font-size: 8px;">Fromm</td> </tr> <tr> <td style="font-size: 8px;">appd.</td> <td style="font-size: 8px;">17.09.08</td> <td style="font-size: 8px;">Mankopf</td> </tr> </table>				date	name	drawn	17.09.08	Fromm	appd.	17.09.08	Mankopf
		date	name										
	drawn	17.09.08	Fromm										
appd.	17.09.08	Mankopf											
THIS DRAWING MAY NOT BE COPIED OR REPRODUCED IN ANY WAY, AND MAY NOT BE PASSED ON TO A THIRD PARTY WITHOUT WRITTEN PERMISSION. OWNERSHIP AND COPYRIGHT OF CONEC GmbH													

X-ON Electronics

Largest Supplier of Electrical and Electronic Components

Click to view similar products for [Circular Metric Connectors](#) category:

Click to view products by [CONEC](#) manufacturer:

Other Similar products are found below :

[600X518037X](#) [6STD15PCR99B70A](#) [8R4000A16M020](#) [8R5000A16M005](#) [1200910002](#) [1203580030](#) [1200910008](#) [1200910011](#) [1300140094](#)
[130203-0054](#) [1300140026](#) [1300150099](#) [RF-12S1N8A90DU](#) [1-3637-600-5205](#) [1612618](#) [21036836414](#) [8R4006A16M010](#) [8R5006A18A120](#)
[1604232](#) [1R3006A20M005](#) [RF-12P1N8A80DU](#) [RF-12P1N8A90DU](#) [41-40011](#) [42-01015](#) [4-22279-4](#) [4-22281-1](#) [4-22284-9](#) [43-01088](#) [43-](#)
[01203](#) [41-40013](#) [42-00008](#) [43-00343](#) [43-01032](#) [43-01162](#) [43-10000](#) [600X518050X](#) [SACC-DSI-FS-5P-PG9-L180 SC](#) [8R5006A16M020](#)
[8R5006A16M005](#) [8R4000A16M010](#) [6-22279-3](#) [1605332](#) [N03FA03144](#) [1300140077](#) [43-01338](#) [XS2RD4265](#) [RSC 4/9](#) [XS2R-D426-1](#)
[XS8A-0441](#) [859RD04-103R004](#)