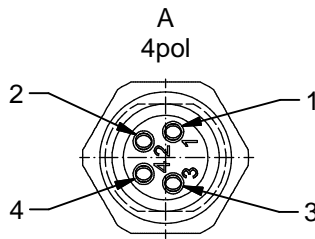


**Contact assignment:**

- 1) brown
- 3) blue
- 4) black



**Contact assignment:**

- 1) brown
- 2) white
- 3) blue
- 4) black

**Technical specification:**

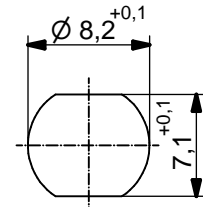
Rated voltage: IEC 61076-2-104	3pos 4pos 60 V 30V
Current rating: IEC 61076-2-104	3/4pos 3 A bei 40°C
Insulation resistance: IEC 60512-2	>=100 MΩ
Pollution degree: IEC 60664-1	3/2
Degree of protection: DIN 40050-9	IP 69K, in mated condition
Temperature range: IEC 60664-1	-30°C ... +105°C
Mating cycles: IEC 60512-9a	>=100

**Materials:**

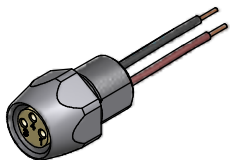
Contact:	CuZn
Contact plating:	Nickel, gold plated
Contact carrier:	PP GF, UL 94
Sealing:	FPM
Socket housing:	1.4404, stainless steel
Grouting:	Polyurethane-resin, UL 94

**Installation specification:**

recommended torque:	0,6-0,8 Nm
Conec installation tool:	torque wrench: 36-000200 insert across flats 10: 36-000270



Minimum wall thickness  
1,5mm, alternativ panel  
cut-out d=8,2



Part no:	Description:	Pos	Length L:	Wire:
42-01018	SAL - FB - 8 - FK3 - 0,2	3	0,2m	AWG 24 PVC, UL
42-xxxxx	SAL - FB - 8 - FK3 - ...	3	x	
42-01019	SAL - FB - 8 - FK4 - 0,2	4	0,2m	
42-xxxxx	SAL - FB - 8 - FK4 - ...	4	x	

DO NOT ALTER CAD DRAWING BY HAND

Directive 2002/95/EC RoHS compliant

Index: a 02.05.11 VF Ä3914  
technical specification modified,  
sleeve site B removed, data sheet revised

tolerance of wire: L ≤ 0,5m: L + 20mm  
L > 0,5m: L + 4%

THIS DRAWING MAY NOT BE COPIED OR  
REPRODUCED IN ANY WAY, AND MAY NOT  
BE PASSED ON TO A THIRD PARTY WITHOUT  
WRITTEN PERMISSION.  
OWNERSHIP AND COPYRIGHT OF CONEC GmbH

	dim. in mm	
	date	name
	drawn 17.09.08	Fromm
appd. 19.09.08	Mankopf	



title:  
**Female socket M8x1 with wire,  
frontmounting, FB**

dwg no:  
**42K1A108**

part no:  
**see table**

## X-ON Electronics

Largest Supplier of Electrical and Electronic Components

*Click to view similar products for [Sensor Cables / Actuator Cables](#) category:*

*Click to view products by [CONEC](#) manufacturer:*

Other Similar products are found below :

[60963](#) [60964](#) [703000D02F2002](#) [703000D02F300](#) [703001D02F0602](#) [703001D02F1201](#) [703001D02F300](#) [704000D02F120](#) [773032K02F030](#)  
[802027107404-1](#) [802027213811-1](#) [804001A09M150](#) [805001A09M0502](#) [84914-0235](#) [84914-0237](#) [885030A09M020](#) [1200651332](#)  
[1200651713](#) [1200660844](#) [1200660845](#) [1200661173](#) [1200680071](#) [1200720053](#) [1200720081](#) [1200720099](#) [1200720217](#) [1200800231](#)  
[1200860125](#) [1200870123](#) [1200980102](#) [1200650267](#) [1200650298](#) [1200660183](#) [1200660782](#) [1200660849](#) [1200661295](#) [1200661297](#)  
[1200661342](#) [1200661343](#) [1200670080](#) [1200670220](#) [1200680331](#) [1200720252](#) [1200720255](#) [1200730184](#) [1200860344](#) [1200870359](#)  
[1200870643](#) [1200980008](#) [1200980031](#)