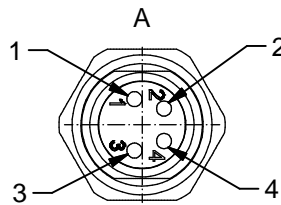


Contact assignment:

- 1 — brown
- 3 — blue
- 4 — black



Contact assignment:

- 1 — brown
- 2 — white
- 3 — blue
- 4 — black

Technical specification:

Rated voltage: 3pos 4pos
IEC 61076-2-104 60 V 30V

Current rating: 3/4 pos
IEC 61076-2-104 3A at 40°C

Insulation resistance: >=100 MΩ
IEC 60512

Pollution degree: 3/2
IEC 60664-1

Degree of protection: IP 67, in mated condition
IEC 60529

Temperature range: -30°C ... +80°C

Mating cycles: >=100
IEC 60512-9a

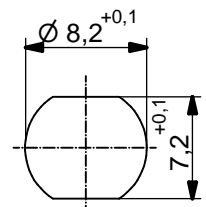
Materials:

Contact: CuZn
Contact plating: Nickel, gold plated
Contact carrier: PA, UL 94, V-0
Sealing: NBR
Counter nut: CuZn, nickel plated
Socket housing: CuZn, nickel plated
Grouting: Polyurethane-resin, UL 94, V-0

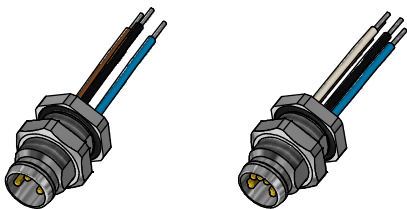
Installation specification:

Recommended torque: 0,6 - 0,8 Nm

Conec installation tool: Torque wrench: 36-000200
Insert across flats 10: 36-000270



Minimum wall thickness 1,5mm, alternativ panel cut-out d=8,2



Part no:	Description:	Pos	Length L:	Wire:
42-01034	SAL - 8 - FSH3 - 0,2	3	0,2m	AWG 24 PVC, UL
42-xxxxx	SAL - 8 - FSH3 - ...	3	x	
42-01035	SAL - 8 - FSH4 - 0,2	4	0,2m	
42-xxxxx	SAL - 8 - FSH4 - ...	4	x	

DO NOT ALTER CAD DRAWING BY HAND	Index: d 17.12.14 MG Ä5465 data sheet revised, temperature range: IEC removed, materials: counter nut added	dim. in mm	title: Male socket M8x1 with wire, backmounting								
		<table border="1" style="width: 100%; border-collapse: collapse;"> <tr> <td></td> <td style="font-size: 8px;">date</td> <td style="font-size: 8px;">name</td> </tr> <tr> <td style="font-size: 8px;">drawn</td> <td style="font-size: 8px;">27.10.09</td> <td style="font-size: 8px;">Burschik</td> </tr> <tr> <td style="font-size: 8px;">appd.</td> <td style="font-size: 8px;">27.10.09</td> <td style="font-size: 8px;">Schmidt</td> </tr> </table>				date	name	drawn	27.10.09	Burschik	appd.
		date	name								
	drawn	27.10.09	Burschik								
appd.	27.10.09	Schmidt									
tolerance of cable: L <= 0,5m: L + 20mm L > 0,5m: L + 4%			dwg no: 42K1A153								
general tolerance: 0 ± 0,50mm 0,0 ± 0,25mm 0,00 ± 0,10mm			part no: see table								
THIS DRAWING MAY NOT BE COPIED OR REPRODUCED IN ANY WAY, AND MAY NOT BE PASSED ON TO A THIRD PARTY WITHOUT WRITTEN PERMISSION. OWNERSHIP AND COPYRIGHT OF CONEC GmbH											

X-ON Electronics

Largest Supplier of Electrical and Electronic Components

Click to view similar products for [Circular Metric Connectors](#) category:

Click to view products by [CONEC](#) manufacturer:

Other Similar products are found below :

[600X518037X](#) [6STD15PCR99B70A](#) [8R4000A16M020](#) [8R5000A16M005](#) [1200910002](#) [1203580030](#) [1200910008](#) [1200910011](#) [1300140094](#)
[130203-0054](#) [1300140026](#) [1300150099](#) [RF-12S1N8A90DU](#) [1-3637-600-5205](#) [1612618](#) [21036836414](#) [8R4006A16M010](#) [8R5006A18A120](#)
[1604232](#) [1R3006A20M005](#) [RF-12P1N8A80DU](#) [RF-12P1N8A90DU](#) [41-40011](#) [42-01015](#) [4-22279-4](#) [4-22281-1](#) [4-22284-9](#) [43-00113](#) [43-](#)
[01088](#) [43-01203](#) [41-40013](#) [42-00008](#) [43-00343](#) [43-01032](#) [43-01162](#) [43-10000](#) [600X518050X](#) [SACC-DSI-FS-5P-PG9-L180 SC](#)
[8R5006A16M020](#) [8R5006A16M005](#) [8R4000A16M010](#) [6-22279-3](#) [1605332](#) [N03FA03144](#) [1300140077](#) [43-01338](#) [XS2RD4265](#) [RSC 4/9](#)
[XS2R-D426-1](#) [XS8A-0441](#)