

**Contact assignment:**

- 1) brown
- 2) white
- 3) blue
- 4) black
- 5) grey

**Technical specification:**

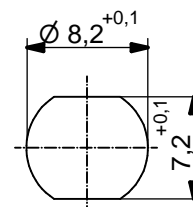
|                                     |                           |
|-------------------------------------|---------------------------|
| Rated voltage:<br>IEC 61076-2-104   | 30 V                      |
| Current rating:<br>IEC 61076-2-104  | 3 A bei 40°C              |
| Insulation resistance:<br>IEC 60512 | >=100 MΩ                  |
| Pollution degree:<br>IEC 60664-1    | 3/2                       |
| Degree of protection:<br>IEC 60529  | IP 67, in mated condition |
| Temperature range:<br>IEC 60664-1   | -30°C ... +80°C           |
| Mating cycles:<br>IEC 60512-9a      | >=100                     |

**Materials:**

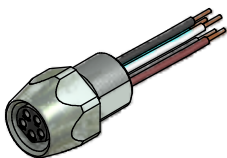
|                  |                           |
|------------------|---------------------------|
| Contact:         | CuZn                      |
| Contact plating: | Nickel, gold plated       |
| Contact carrier: | TPU GF, UL 94             |
| Sealing:         | NBR                       |
| Socket housing:  | CuZn, nickel plated       |
| Grouting:        | Polyurethane-resin, UL 94 |

**Installation specification:**

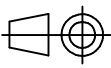

|                          |   |
|--------------------------|---|
| recommended torque:      | 0,6-0,8 Nm  |
| Conec installation tool: | torque wrench:<br>36-000200<br>insert across flats 10:<br>36-000270 |



Minimum wall thickness  
1,5mm, alternativ panel  
cut-out d=8,2



| Part no: | Description:           | Pos | Length L: | Wire:          |
|----------|------------------------|-----|-----------|----------------|
| 42-01069 | SAL - 8B - FK5.1 - 0,2 | 5   | 0,2m      | AWG 24 PVC, UL |
| 42-xxxxx | SAL - 8B - FK5.1 - ... | 5   | x         |                |

|   |  |  |          |   |                 |
|---|--|--|----------|---|-----------------|
| DO NOT ALTER CAD DRAWING BY HAND<br>Directive 2002/95/EC RoHS compliant | Index: a 02.05.11 VF Ä3914<br>technical specification modified,<br>wires site B stripped   |  dim. in mm |          | title:<br><b>Female socket M8x1 with wires,<br/>frontmounting, B-coding</b> |                 |
|   | tolerance of wire: L ≤ 0,5m: L + 20mm<br>L > 0,5m: L + 4%  | drawn  | 03.08.10 |   | Fromm           |
|   | THIS DRAWING MAY NOT BE COPIED OR<br>REPRODUCED IN ANY WAY, AND MAY NOT<br>BE PASSED ON TO A THIRD PARTY WITHOUT<br>WRITTEN PERMISSION.<br>OWNERSHIP AND COPYRIGHT OF CONEC GmbH | appd.  | 03.08.10 | Mankopf   | dwg no:         |
|   |  |             |          |   | <b>42K1A239</b> |
|   |  |  |          | part no: see table  |                 |

## X-ON Electronics

Largest Supplier of Electrical and Electronic Components

*Click to view similar products for [Sensor Cables / Actuator Cables](#) category:*

*Click to view products by [CONEC](#) manufacturer:*

Other Similar products are found below :

[60963](#) [60964](#) [703000D02F2002](#) [703000D02F300](#) [703001D02F0602](#) [703001D02F300](#) [704000D02F120](#) [773032K02F030](#) [802027107404-1](#)  
[802027213811-1](#) [804001A09M150](#) [805001A09M0502](#) [84914-0235](#) [84914-0237](#) [885030A09M020](#) [1200651332](#) [1200651713](#) [1200660844](#)  
[1200660845](#) [1200661173](#) [1200680071](#) [1200720053](#) [1200720081](#) [1200720099](#) [1200720217](#) [1200800231](#) [1200860125](#) [1200870123](#)  
[1200980102](#) [1200650267](#) [1200650298](#) [1200660183](#) [1200660782](#) [1200660849](#) [1200661295](#) [1200661297](#) [1200661342](#) [1200661343](#)  
[1200670080](#) [1200670220](#) [1200680331](#) [1200720252](#) [1200730184](#) [1200860344](#) [1200870359](#) [1200870643](#) [1200980008](#) [1200980031](#)  
[1210502211](#) [1210400542](#)