

Technical specification:

Rated voltage: 4pos 5pos
IEC 61076-2-101 250 V 60 V

Current rating: 4 A at 40°C
IEC 61076-2-101

Insulation resistance: >=100 MΩ
IEC 60512

Pollution degree: 3/2
IEC 60664-1

Degree of protection: IP 67, in mated condition
IEC 60529

Temperature range: -30°C ... +85°C
EN 60512-11-10
-40°C ... +85°C
EN 60512-11-4

Mating cycles: >=100
IEC 60512-9a

Materials:

Contact: CuZn, Ni b / Au 0,2 gal.

Contact carrier: PA GF, UL 94 V-0

Sealing: FPM

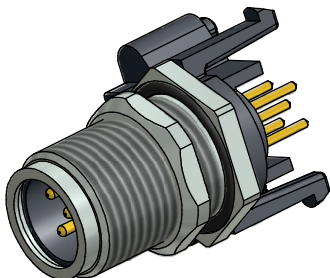
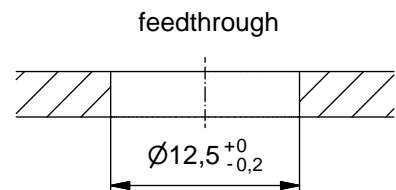
Socket housing: CuZn, nickel plated

Shroud: spring steel, nickel plated

Installation specification:

recommended torque: 0,8-1 Nm

Conec installation tool: Torque wrench: 36-000200
Insert across flats 14: 36-000370
Insert across flats 15: 36-000320



Part no:	Description:	Pos	Note:
43-01174	SAL - 12 - FSH4 - X10	4	
43-01175	SAL - 12S - FSH4 - X10	4	with shroud
43-01176	SAL - 12 - FSH5.1 - X10	5	
43-01177	SAL - 12S - FSH5.1 - X10	5	with shroud

DO NOT ALTER CAD DRAWING BY HAND

RoHS & REACH compliant

Index: b 21.08.13 MG Ä4884
Data sheet revised, width across flats of the counter nut changed, installation specification added

general tolerance: 0 ± 0,50mm
0,0 ± 0,25mm
0,00 ± 0,10mm
* ± 1,5°

THIS DRAWING MAY NOT BE COPIED OR REPRODUCED IN ANY WAY, AND MAY NOT BE PASSED ON TO A THIRD PARTY WITHOUT WRITTEN PERMISSION. OWNERSHIP AND COPYRIGHT OF CONEC GmbH

dim. in mm

date	name
drawn 11.10.07	Fromm
appd. 18.10.07	W.Schmidt

CONEC®

title:
Male socket M12x1 axial, backmounting, dip solder, X10

dwg no:
43K1A500

part no:

X-ON Electronics

Largest Supplier of Electrical and Electronic Components

Click to view similar products for [Circular Metric Connectors](#) category:

Click to view products by [CONEC](#) manufacturer:

Other Similar products are found below :

[600X518037X](#) [8R4A00A18M020](#) [8R5000A16M005](#) [1200910008](#) [1300140094](#) [130203-0054](#) [1300150099](#) [1-3637-600-5205](#)

[8R4006A16M010](#) [8R5006A18A120](#) [1R3006A20M005](#) [RF-12P1N8A80DU](#) [RF-12P1N8A90DU](#) [TBF-20-11PS](#) [41-01016](#) [41-40011](#) [41-40017](#) [42-01015](#) [4-22279-4](#) [4-22281-1](#) [4-22284-9](#) [43-01209](#) [43-10041](#) [41-40005](#) [41-40016](#) [43-00132](#) [SACC-DSI-FS-5P-PG9-L180 SC](#)

[8R4006A16A120](#) [8R4000A16M010](#) [1R3004A20A1201](#) [6-22279-3](#) [N03FA03144](#) [1300140077](#) [41-01117](#) [XS2RD4265](#) [XS2R-D426-1](#)

[XS8A-0441](#) [859RD04-103R004](#) [860RD04-113R004](#) [860-X08-213R004](#) [1-213245-2](#) [2273142-2](#) [LC20-02PMFS-SW8001](#) [1604360](#) [MSAS-12PMMP-SF8001](#) [8P-04BFFB-SL7001](#) [21038122406](#) [41-50000](#) [MSAS-12BFFA-SR7001](#) [43-05120](#)