

Contact assignment:

- | | |
|------------|----------------|
| 1 - brown | 7 - black |
| 2 - blue | 8 - grey |
| 3 - white | 9 - red |
| 4 - green | 10 - violet |
| 5 - pink | 11 - grey-pink |
| 6 - yellow | 12 - red-blue |

Technical specification :

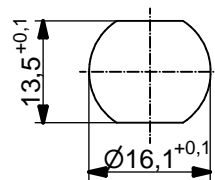
- | | |
|------------------------|---------------------------|
| Rated voltage: | 30 V |
| IEC 61076-2-101 | |
| Current rating: | 1,5 A at 40°C |
| IEC 61076-2-101 | |
| Insulation resistance: | >=100 MΩ |
| IEC 60512 | |
| Pollution degree: | 3/2 |
| IEC 60664-1 | |
| Degree of protection: | IP 67, in mated condition |
| IEC 60529 | |
| Temperature range: | -30°C ... +80°C |
| Mating cycles: | >=100 |
| IEC 60512-9a | |

Materials:

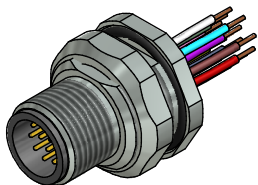
- | | |
|------------------|---------------------------|
| Contact: | CuZn |
| Contact plating: | Nickel, gold plated |
| Contact carrier: | PBT GF, UL 94 |
| Sealing chassis: | NBR |
| Counternut: | CuZn, nickel plated |
| Socket housing: | CuZn, nickel plated |
| Grouting: | Polyurethane-resin, UL 94 |

Installation specification:

- | | |
|--------------------------|---|
| Recommended torque: | 1-1,2 Nm |
| Conec installation tool: | Torque wrench:
36-000200
Insert across flats 19:
36-000250 |



Minimum wall thickness 1,5mm, alternativ panel cut-out d=16,1



Part no:	Description:	Pos	Length L:	Wire:
43-01344	SAL - 12 - FSH12 - 0,5	12	0,5m	AWG 26 PVC, UL
43-xxxxx	SAL - 12 - FSH12 - ...	12	x	

DO NOT ALTER CAD DRAWING BY HAND Directive 2002/95/EC RoHS compliant	Index: c 30.11.12 MG Ä4555 Data sheet revised, technical specification changed, materials corrected	dim. in mm	title: Male socket M12x1 with wire, backmounting		
					date
	tolerance of wire: L <= 0,5m: L + 20mm L > 0,5m: L + 4%	drawn 17.10.08 appd. 17.10.08	Fromm Mankopf	dwg no: 43K1A776	
	general tolerance: 0 ± 0,50mm 0,0 ± 0,25mm 0,00 ± 0,10mm				
<small>THIS DRAWING MAY NOT BE COPIED OR REPRODUCED IN ANY WAY, AND MAY NOT BE PASSED ON TO A THIRD PARTY WITHOUT WRITTEN PERMISSION. OWNERSHIP AND COPYRIGHT OF CONEC GmbH</small>					

X-ON Electronics

Largest Supplier of Electrical and Electronic Components

Click to view similar products for [Circular Metric Connectors](#) category:

Click to view products by [CONEC](#) manufacturer:

Other Similar products are found below :

[600X518037X](#) [6STD15PCR99B70A](#) [8R4000A16M020](#) [8R5000A16M005](#) [1200910002](#) [1203580030](#) [1200910008](#) [1200910011](#) [1300140094](#)
[130203-0054](#) [1300140026](#) [1300150099](#) [RF-12S1N8A90DU](#) [1-3637-600-5205](#) [1612618](#) [21036836414](#) [8R4006A16M010](#) [8R5006A18A120](#)
[1604232](#) [1R3006A20M005](#) [RF-12P1N8A80DU](#) [RF-12P1N8A90DU](#) [41-40011](#) [42-01015](#) [4-22279-4](#) [4-22281-1](#) [4-22284-9](#) [43-01088](#) [43-](#)
[01203](#) [41-40013](#) [42-00008](#) [43-00343](#) [43-01032](#) [43-01162](#) [43-10000](#) [600X518050X](#) [SACC-DSI-FS-5P-PG9-L180 SC](#) [8R5006A16M020](#)
[8R5006A16M005](#) [8R4000A16M010](#) [6-22279-3](#) [1605332](#) [N03FA03144](#) [1300140077](#) [43-01338](#) [XS2RD4265](#) [RSC 4/9](#) [XS2R-D426-1](#)
[XS8A-0441](#) [859RD04-103R004](#)