

D-SUB HIGH DENSITY – IP67

Solder cup – Precision machined contacts – Front mounting – For wire size AWG 22

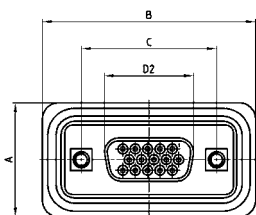


RoHS compliant - CSA listed, File No.LR115000-1 UL listed, File No. E202784

DESCRIPTION

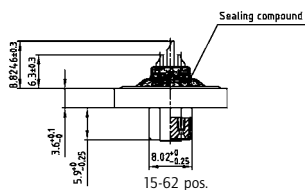
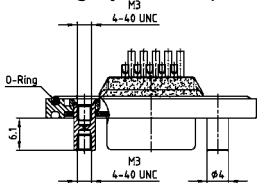
- Suitable for wire size **AWG 22**
- Mounting styles:
 - with M3 or 4-40 UNC front spacer
 - with M3 or 4-40 UNC front spacer and rear mounting stud
- Quality class 3 (also available in quality class 1)
- Shell: Brass tin plated (stainless steel available on request)
- Nickel plated die-cast frame (Black plastic frame on request)

SOCKET CONNECTOR

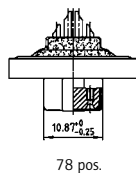
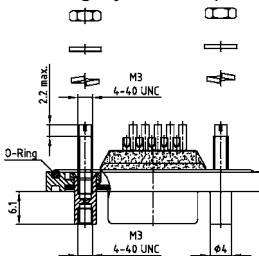


No. of pos.	A +0.2	B +0.2	C	D2 -0.25
15	21.10	39.40	25.00 ^{+0.12} / _{-0.13}	16.46
26	21.10	47.70	33.30 ^{+0.15} / _{-0.10}	24.79
44	21.10	61.40	47.04 ^{+0.13} / _{-0.13}	38.50
62	21.10	77.90	63.50 ^{+0.13} / _{-0.13}	54.96
78	23.90	75.50	61.10 ^{+0.14} / _{-0.11}	52.55

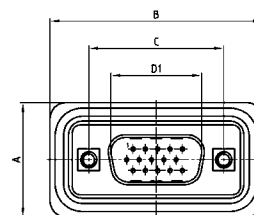
Mounting style: Front spacer



Mounting style: Front spacer and rear mounting stud

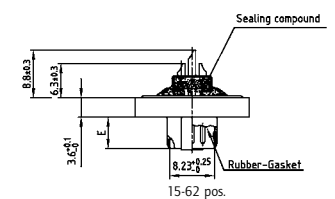
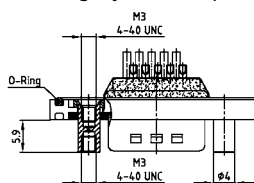


PLUG CONNECTOR

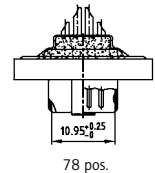
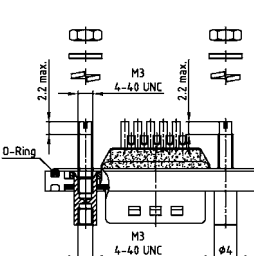


No. of pos.	A +0.2	B +0.2	C	D1 +0.25	E -0.30
15	21.10	39.40	25.00 ^{+0.12} / _{-0.13}	16.79	5.82
26	21.10	47.70	33.30 ^{+0.15} / _{-0.10}	25.12	5.82
44	21.10	61.40	47.04 ^{+0.13} / _{-0.13}	38.84	5.69
62	21.10	77.90	63.50 ^{+0.13} / _{-0.13}	55.30	5.69
78	23.90	75.50	61.10 ^{+0.14} / _{-0.11}	52.68	5.69

Mounting style: Front spacer



Mounting style: Front spacer and rear mounting stud



ORDER DATA

SOCKET CONNECTOR		
No. of pos.	Mounting style	Part Number
15	M3 Front spacer	6 HDD15SAM99B40 X
26	M3 Front spacer	6 HDD26SAM99B40 X
44	M3 Front spacer	6 HDD44SAM99B40 X
62	M3 Front spacer	6 HDD62SAM99B40 X
78	M3 Front spacer	6 HDD78SAM99B40 X
15	4-40 UNC Front spacer	6 HDD15SAM99B50 X
26	4-40 UNC Front spacer	6 HDD26SAM99B50 X
44	4-40 UNC Front spacer	6 HDD44SAM99B50 X
62	4-40 UNC Front spacer	6 HDD62SAM99B50 X
78	4-40 UNC Front spacer	6 HDD78SAM99B50 X
15	4-40 UNC Front spacer and rear mounting stud	6 HDD15SAM99B70 X
26	4-40 UNC Front spacer and rear mounting stud	6 HDD26SAM99B70 X
44	4-40 UNC Front spacer and rear mounting stud	6 HDD44SAM99B70 X
62	4-40 UNC Front spacer and rear mounting stud	6 HDD62SAM99B70 X
78	4-40 UNC Front spacer and rear mounting stud	6 HDD78SAM99B70 X

PLUG CONNECTOR		
No. of pos.	Mounting style	Part Number
15	M3 Front spacer	6 HDD15PAM99B40 X
26	M3 Front spacer	6 HDD26PAM99B40 X
44	M3 Front spacer	6 HDD44PAM99B40 X
62	M3 Front spacer	6 HDD62PAM99B40 X
78	M3 Front spacer	6 HDD78PAM99B40 X
15	4-40 UNC Front spacer	6 HDD15PAM99B50 X
26	4-40 UNC Front spacer	6 HDD26PAM99B50 X
44	4-40 UNC Front spacer	6 HDD44PAM99B50 X
62	4-40 UNC Front spacer	6 HDD62PAM99B50 X
78	4-40 UNC Front spacer	6 HDD78PAM99B50 X
15	4-40 UNC Front spacer and rear mounting stud	6 HDD15PAM99B70 X
26	4-40 UNC Front spacer and rear mounting stud	6 HDD26PAM99B70 X
44	4-40 UNC Front spacer and rear mounting stud	6 HDD44PAM99B70 X
62	4-40 UNC Front spacer and rear mounting stud	6 HDD62PAM99B70 X
78	4-40 UNC Front spacer and rear mounting stud	6 HDD78PAM99B70 X

X-ON Electronics

Largest Supplier of Electrical and Electronic Components

Click to view similar products for [D-Sub High Density Connectors](#) category:

Click to view products by [CONEC](#) manufacturer:

Other Similar products are found below :

[97-3250-11](#) [163A17089X](#) [164A17199X](#) [164C18629X](#) [L717HDB44POL2R210](#) [L717HDEH15POL2](#) [L777HDE15P](#) [L77HDE15SC309](#)
[163A16759X](#) [163A16839X](#) [163A16989X](#) [163A17079X](#) [164A17329X](#) [164A18219X](#) [241A16440X](#) [241A16550X](#) [241A16680X](#)
[241A20810X](#) [241A25740X](#) [CT25-44P](#) [MDBE15PE766](#) [L177HDE15SOL2RM23](#) [L177HRC62SVFM](#) [L177HRCG62S](#)
[L717HDEG15POL2RM5](#) [L77HDA26SVF](#) [L77HDE15SD1CO](#) [L77HDEH15SOL2RM832](#) [DAMA-15S-WS](#) [443895-3](#) [106698-1](#) [280-](#)
[012K2C](#) [DBMV13H3SNA197](#) [L177HRB44S](#) [164A17039X](#) [09562004701510](#) [L777HRC62P](#) [241A17960X](#) [164A18269X](#) [280-019S1S9MEN](#)
[L777HDEG15P](#) [280-018P3S25MEGN](#) [206504-2](#) [40-9415HDSP](#) [40-9515HDSP](#) [2057140-1](#) [C115370-6002](#) [DFMA104SNMBFR172FR022](#)
[HDC9F200E2S](#) [L717HDAG26POL2RM8](#)