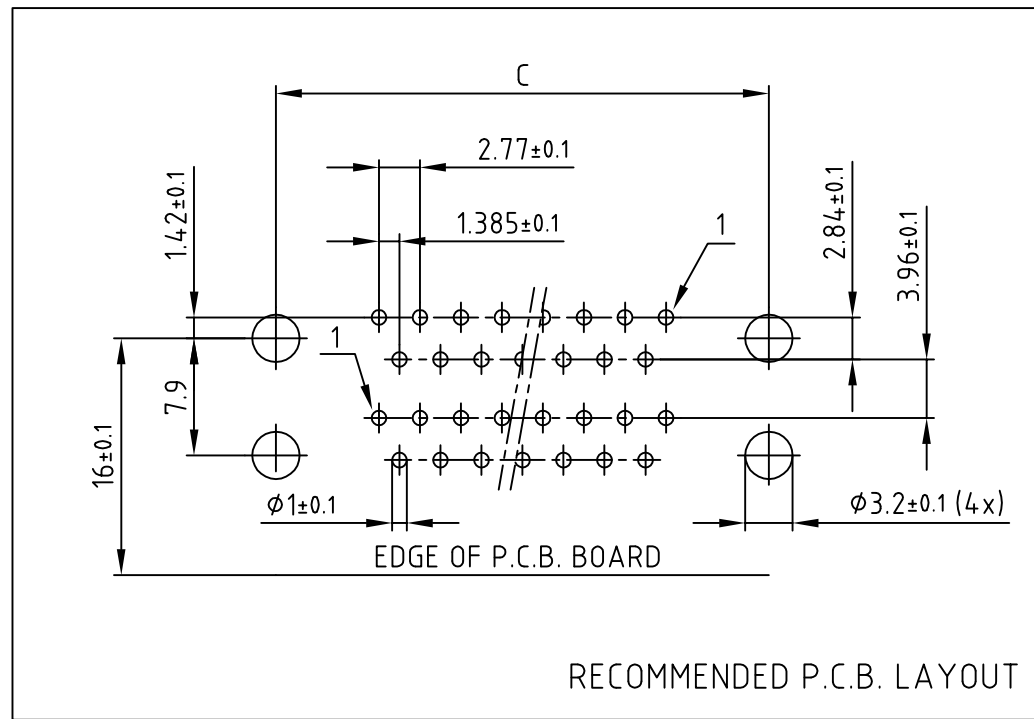
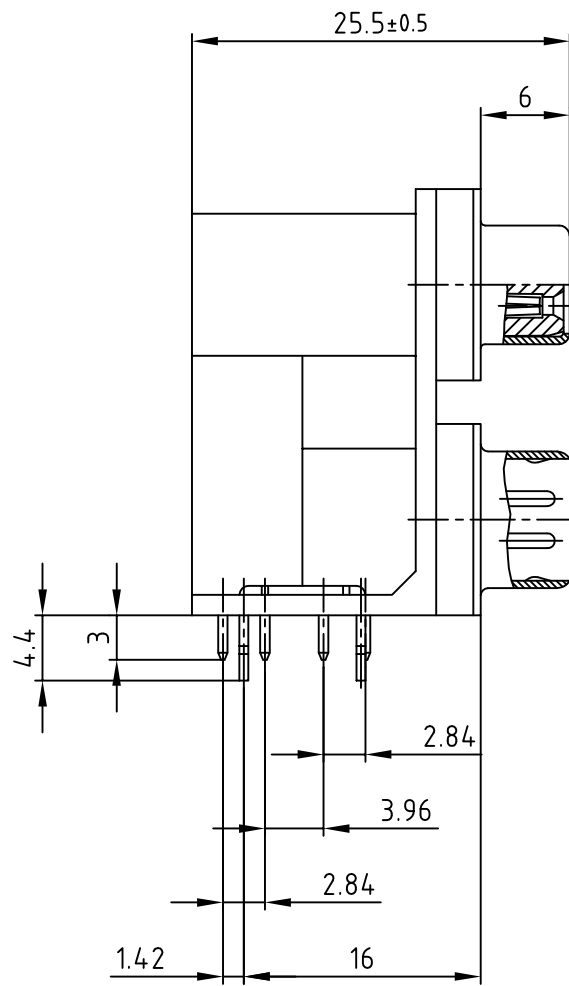
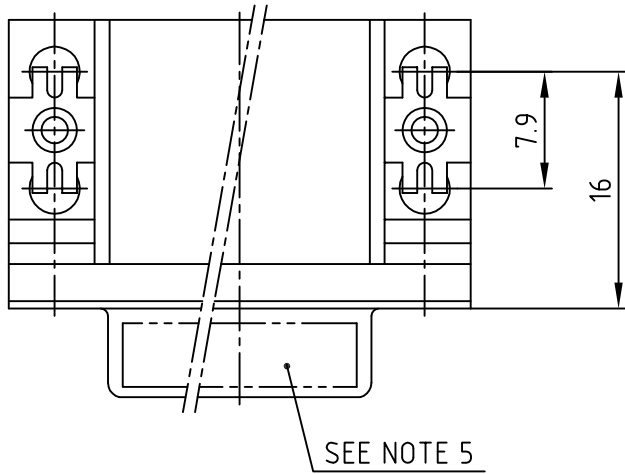
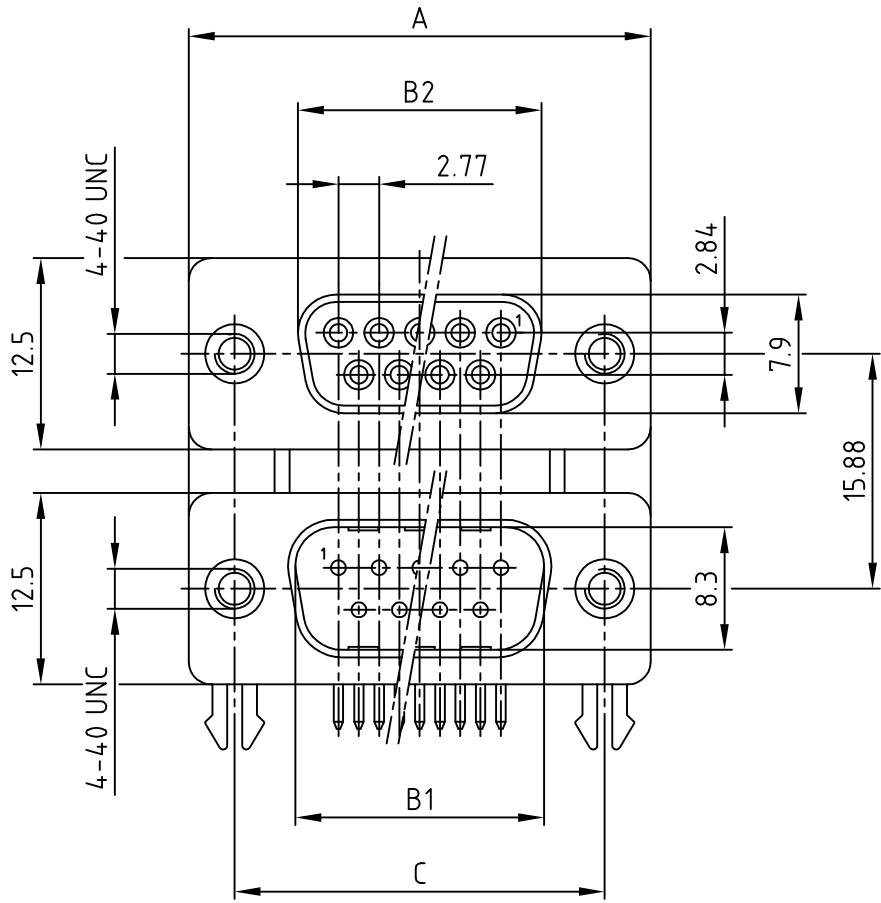


used for: D-SUB DUAL-PORT



| No. of pos. | A | B1 | B2 | C | Part NO. |
|-------------|-------|-------|-------|-------|--------------|
| 2x 9 | 30.80 | 16.92 | 16.30 | 25.00 | DLS1SP5AN21X |
| 2x15 | 39.20 | 25.25 | 24.60 | 33.30 | DLS2SP5AN21X |
| 2x25 | 53.10 | 38.96 | 38.30 | 47.10 | DLS3SP5AN21X |
| 2x37 | 69.40 | 55.42 | 54.80 | 63.50 | DLS4SP5AN21X |

Directive 2002/95/EC RoHS compliant

NOTES:

1. METALSHELLS: STEEL; min. 320µin TIN
2. INSULATORS: PBT GF UL 94 V-0, BLACK
3. CONTACTS: COPPER ALLOY
PLATING MATING AREA: GOLD FLASH
4. MAXIMUM TORQUE VALUE FOR THREAD: 6 in.LB
5. CONNECTOR IS PART MARKED: PART-NO. CONEC ABC

| | |
|---|--------|
| APPROVAL # FREIGABE # DEBLOCAGE # AUTOR/ZACION # APPROVAL | |
| CUSTOMER APPROVAL DATE: | |
| NAME: | TITLE: |
| COMPANY NAME: | |
| APPROVAL # FREIGABE # DEBLOCAGE # AUTOR/ZACION # APPROVAL | |

| | | | |
|---|-------------|------------|--------|
| THIS DRAWING MAY NOT BE COPIED OR REPRODUCED IN ANY WAY, AND MAY NOT BE PASSED ON TO A THIRD PARTY WITHOUT WRITTEN PERMISSION. OWNERSHIP AND COPYRIGHT OF CONEC GmbH DO NOT ALTER CAD DRAWING BY HAND | | | |
| 1 x b | Ä3442 | 28.09.2009 | Petker |
| a | Origin | | |
| rev. | description | date | name |

| | | | |
|-----------|--|-----------|--|
| tolerance | | scale: | 2:1 |
| | | material: | SEE NOTES |
| | | title: | DUAL-PORT 15.88mm Female / Male 2x9pos. - 2x37pos. with 4-40 UNC insert and clip |
| | | dwg no: | AutoCAD 2004 |
| | | | DIN-A |
| | | | 3 |
| | | | sh:1/1 |
| | | part no: | SEE TABLE |



X-ON Electronics

Largest Supplier of Electrical and Electronic Components

Click to view similar products for [D-Sub Dualport Connectors](#) category:

Click to view products by [CONEC](#) manufacturer:

Other Similar products are found below :

[787672-3](#) [164A15909X](#) [K42X-E15S/S-A4NJ](#) [K42X-E9SS-A4NJ](#) [242A14060X](#) [164A15819X](#) [DLS2SS5AN21X](#) [241A22450X](#) [242A14180X](#)
[241A14190X](#) [DLS4SS5AN21X](#) [178-037-513R491](#) [178-037-613R491](#) [178-009-413R571](#) [178-009-513R571](#) [178-009-613R491](#) [178-009-613R691](#) [178-015-513R571](#) [178-015-613R571](#) [178-025-513R571](#) [179-009-513R571](#) [179-009-613R571](#) [179-025-513R571](#) [179-037-513R571](#)
[K42X-E15S/S-A4N](#) [K42X-E9S/P-A4N](#) [L17H2220131](#) [178-015-513R491](#) [178-025-613R481](#) [178-025-613R571](#) [178-037-513R571](#) [178-037-513R671](#) [L17H2220120](#) [L17H2ED0130](#) [L17H1440130](#) [L17H1770231](#) [L17H2110120](#) [L17H2440120TM](#) [L17H1431134](#) [L17H1212130](#)
[L17H2212120](#) [L17H1222134](#) [L17H2662120TM](#) [L17H2550120](#) [L17H2440120](#) [L17H2440121](#) [L17H1120134](#) [L17H2120120](#) [L17H2120230](#)
[L17H1440134](#)