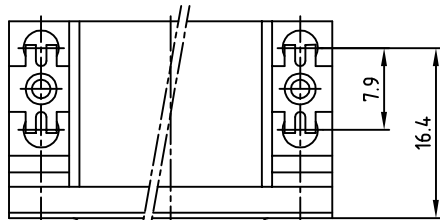
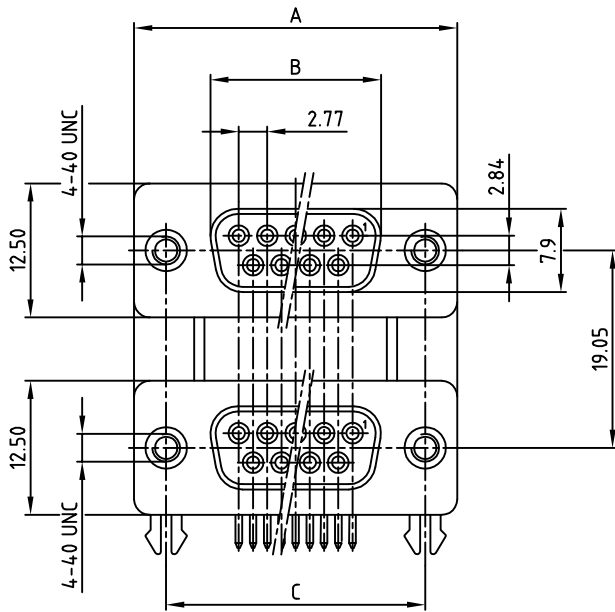
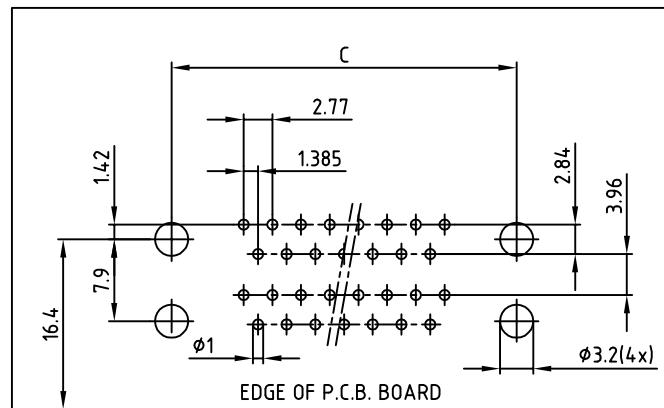
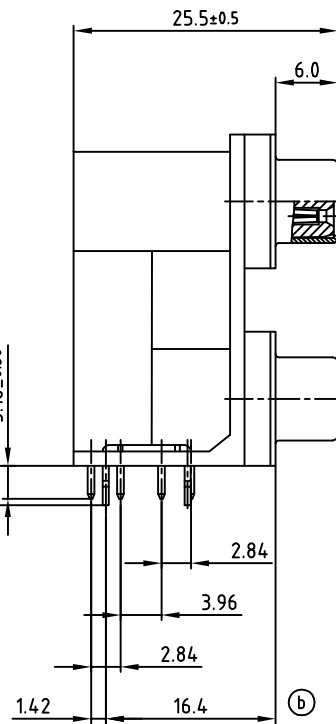


used for: D-SUB DUAL-PORT



SEE NOTE 4



RECOMMENDED P.C.B. LAYOUT (TOP VIEW)
TOLERANCES: ±0.05mm

NOTES:

1. MATERIAL:
 - INSULATOR: THERMAL PLASTIC UL94V-0
 - CONTACTS: COPPER ALLOY
 - SHELL: STEEL / NICKEL PLATED
 - RIVET, BOARDLOCK: COPPER ALLOY
2. CONTACT PLATING:
 - UNDERPLATE: 50µin ~ 100µin NICKEL
 - CONTACT AREA: GOLD PLATED
 - SOLDER TAILS AREA: 100µin ~ 200µin TIN (LEAD FREE)
3. ELECTRICAL:
 - OPERATION VOLTAGE: 250 VAC max.
 - CURRENT RATING: 3A max.
 - CONTACT RESISTANCE: 25 mOhm max.
 - INSULATION RESISTANCE: 3000 MOhm min. @ 500 VDC
 - DIELECTRIC WITHSTANDING VOLTAGE: 1000 VAC / MINUTE
 - TEMPERATURE RANGE: -55°C TO +105°C
4. CONNECTOR IS PART MARKED: PART-NÖ. CONEC ABC

No. of pos.	A	B	C	Part No.
2x 9	30.8	16.30	25.00	DLS1SS5AN23X
2x15	39.2	24.60	33.30	DLS2SS5AN23X
2x25	53.1	38.30	47.10	DLS3SS5AN23X
2x37	69.4	54.80	63.50	DLS4SS5AN23X

RoHS compliant

THIS DRAWING MAY NOT BE COPIED OR REPRODUCED IN ANY WAY, AND MAY NOT BE PASSED ON TO A THIRD PARTY, WITHOUT WRITTEN PERMISSION. OWNERSHIP AND COPYRIGHT OF CONEC Gmbh DO NOT ALTER CAD DRAWING BY HAND

rev.	description	date	name
4 x b	Ä 5932	13.01.2016	Unkrieter
a	Original		



UNLESS OTHERWISE SPECIFIED TOLERANCE	scale: 2:1															
<table border="0"> <tr> <td>ø</td> <td>±0.5</td> </tr> <tr> <td>h</td> <td>±0.3</td> </tr> <tr> <td>mm</td> <td>±0.2</td> </tr> </table>	ø	±0.5	h	±0.3	mm	±0.2	material: SEE NOTES									
ø	±0.5															
h	±0.3															
mm	±0.2															
<table border="0"> <tr> <td>2004</td> <td>date</td> <td>name</td> </tr> <tr> <td>drawn</td> <td>11.10.</td> <td>Schmidt</td> </tr> <tr> <td>appd.</td> <td>11.10.</td> <td>Mickenbecker</td> </tr> <tr> <td>norm</td> <td></td> <td></td> </tr> <tr> <td>d-old</td> <td></td> <td></td> </tr> </table>	2004	date	name	drawn	11.10.	Schmidt	appd.	11.10.	Mickenbecker	norm			d-old			title: D-SUB DUAL-PORT Female / Female 2x9pos. - 2x37pos. with 4-40 UNC inserts and clips
2004	date	name														
drawn	11.10.	Schmidt														
appd.	11.10.	Mickenbecker														
norm																
d-old																
dwg no: AutoCAD 2000	DIN-A															
16K1A1244	3															
part no: SEE TABLE	sh: 1/1															

X-ON Electronics

Largest Supplier of Electrical and Electronic Components

Click to view similar products for [D-Sub Dualport Connectors](#) category:

Click to view products by [CONEC](#) manufacturer:

Other Similar products are found below :

[787672-3](#) [164A15909X](#) [K42X-E15S/S-A4NJ](#) [K42X-E9SS-A4NJ](#) [242A14060X](#) [164A15819X](#) [DLS2SS5AN21X](#) [241A22450X](#) [242A14180X](#)
[241A14190X](#) [DLS4SS5AN21X](#) [178-037-513R491](#) [178-037-613R491](#) [178-009-413R571](#) [178-009-513R571](#) [178-009-613R491](#) [178-009-613R691](#) [178-015-513R571](#) [178-015-613R571](#) [178-025-513R571](#) [179-009-513R571](#) [179-009-613R571](#) [179-025-513R571](#) [179-037-513R571](#)
[K42X-E15S/S-A4N](#) [K42X-E9S/P-A4N](#) [L17H2220131](#) [178-015-513R491](#) [178-025-613R481](#) [178-025-613R571](#) [178-037-513R571](#) [178-037-513R671](#) [L17H2220120](#) [L17H2ED0130](#) [L17H1440130](#) [L17H1770231](#) [L17H2110120](#) [L17H2440120TM](#) [L17H1431134](#) [L17H1212130](#)
[L17H2212120](#) [L17H1222134](#) [L17H2662120TM](#) [L17H2550120](#) [L17H2440120](#) [L17H2440121](#) [L17H1120134](#) [L17H2120120](#) [L17H2120230](#)
[L17H1440134](#)