

D-SUB STANDARD

Solder pin – Straight – Stamped contacts



RoHS compliant – CSA listed, File No.: LR 115000-1 – UL listed, File No.: E202784

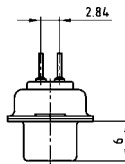
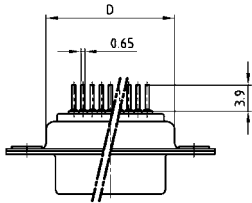
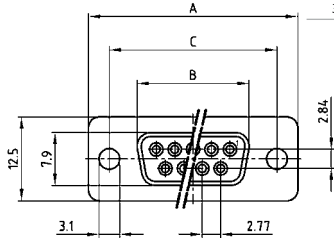
DESCRIPTION

- Mounting styles:
 - with through-hole, \varnothing .118" / 3 mm
 - with 4-40 UNC threaded insert
 - with 4-40 UNC threaded rear spacer
 - with 4-40 UNC threaded rear spacer with PCB clip
 - with 4-40 UNC front and threaded rear spacer with PCB clip
- Quality class 3 (other quality classes on request)
- Shell: Steel tin plated

SOCKET CONNECTOR

9-37 pos.

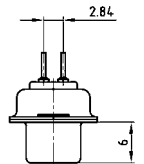
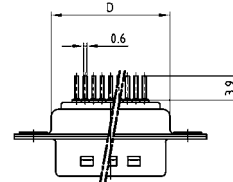
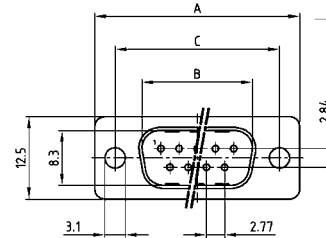
No. of pos.	A	B	C	D
09	30.80	16.30	25.00	19.20
15	39.20	24.60	33.30	27.70
25	53.10	38.30	47.04	41.10
37	69.40	54.80	63.50	57.30



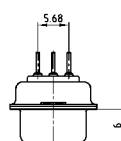
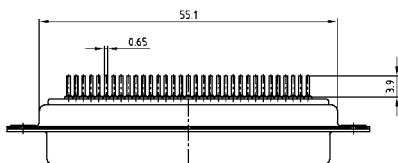
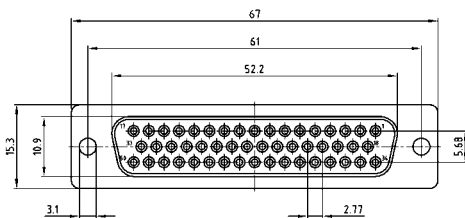
PLUG CONNECTOR

9-37 pos.

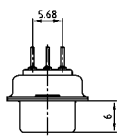
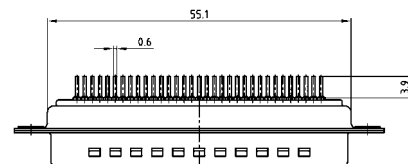
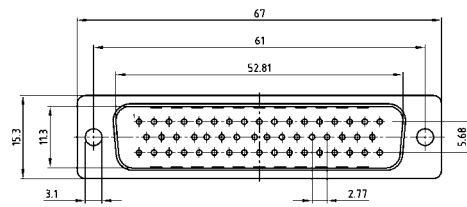
No. of pos.	A	B	C	D
09	30.80	16.92	25.00	19.20
15	39.20	25.25	33.30	27.70
25	53.10	38.96	47.04	41.10
37	69.40	55.42	63.50	57.30



50 pos.



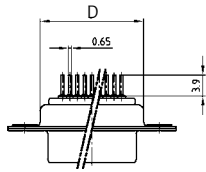
50 pos.



D-SUB STANDARD – MOUNTING STYLES

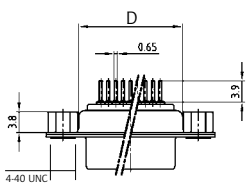
Solder pin – Straight – Stamped contacts

ORDER DATA



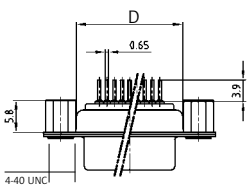
SOCKET CONNECTOR		
No. of pos.	Mounting style	Part Number
09	Through-hole	DLS 1XS4AD01 X
15	Through-hole	DLS 2XS4AD01 X
25	Through-hole	DLS 3XS4AD01 X
37	Through-hole	DLS 4XS4AD01 X
50	Through-hole	DLS 5XS4AD01 X

PLUG CONNECTOR		
No. of pos.	Mounting style	Part Number
09	Through-hole	DLS 1XP4AD01 X
15	Through-hole	DLS 2XP4AD01 X
25	Through-hole	DLS 3XP4AD01 X
37	Through-hole	DLS 4XP4AD01 X
50	Through-hole	DLS 5XP4AD01 X



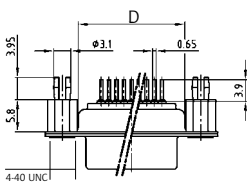
SOCKET CONNECTOR		
No. of pos.	Mounting style 4-40 UNC	Part Number
09	Threaded insert	DLS 1XS4AG06 X
15	Threaded insert	DLS 2XS4AG06 X
25	Threaded insert	DLS 3XS4AG06 X
37	Threaded insert	DLS 4XS4AG06 X
50	Threaded insert	DLS 5XS4AG06 X

PLUG CONNECTOR		
No. of pos.	Mounting style 4-40 UNC	Part Number
09	Threaded insert	DLS 1XP4AG06 X
15	Threaded insert	DLS 2XP4AG06 X
25	Threaded insert	DLS 3XP4AG06 X
37	Threaded insert	DLS 4XP4AG06 X
50	Threaded insert	DLS 5XP4AG06 X



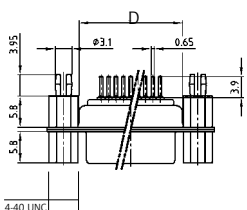
SOCKET CONNECTOR		
No. of pos.	Mounting style 4-40 UNC	Part Number
09	Threaded rear spacer	DLS 1XS4AA37 X
15	Threaded rear spacer	DLS 2XS4AA37 X
25	Threaded rear spacer	DLS 3XS4AA37 X
37	Threaded rear spacer	DLS 4XS4AA37 X
50	Threaded rear spacer	DLS 5XS4AA37 X

PLUG CONNECTOR		
No. of pos.	Mounting style 4-40 UNC	Part Number
09	Threaded rear spacer	DLS 1XP4AA37 X
15	Threaded rear spacer	DLS 2XP4AA37 X
25	Threaded rear spacer	DLS 3XP4AA37 X
37	Threaded rear spacer	DLS 4XP4AA37 X
50	Threaded rear spacer	DLS 5XP4AA37 X



SOCKET CONNECTOR		
No. of pos.	Mounting style 4-40 UNC	Part Number
09	Threaded rear spacer PCB clip	DLS 1XS4AA35 X
15	Threaded rear spacer PCB clip	DLS 2XS4AA35 X
25	Threaded rear spacer PCB clip	DLS 3XS4AA35 X
37	Threaded rear spacer PCB clip	DLS 4XS4AA35 X
50	Threaded rear spacer PCB clip	DLS 5XS4AA35 X

PLUG CONNECTOR		
No. of pos.	Mounting style 4-40 UNC	Part Number
09	Threaded rear spacer PCB clip	DLS 1XP4AA35 X
15	Threaded rear spacer PCB clip	DLS 2XP4AA35 X
25	Threaded rear spacer PCB clip	DLS 3XP4AA35 X
37	Threaded rear spacer PCB clip	DLS 4XP4AA35 X
50	Threaded rear spacer PCB clip	DLS 5XP4AA35 X



SOCKET CONNECTOR		
No. of pos.	Mounting style 4-40 UNC	Part Number
09	Front/Threaded rear spacer PCB clip	DLS 1XS4AA39 X
15	Front/Threaded rear spacer PCB clip	DLS 2XS4AA39 X
25	Front/Threaded rear spacer PCB clip	DLS 3XS4AA39 X
37	Front/Threaded rear spacer PCB clip	DLS 4XS4AA39 X
50	Front/Threaded rear spacer PCB clip	DLS 5XS4AA39 X

PLUG CONNECTOR		
No. of pos.	Mounting style 4-40 UNC	Part Number
09	Front/Threaded rear spacer PCB clip	DLS 1XP4AA39 X
15	Front/Threaded rear spacer PCB clip	DLS 2XP4AA39 X
25	Front/Threaded rear spacer PCB clip	DLS 3XP4AA39 X
37	Front/Threaded rear spacer PCB clip	DLS 4XP4AA39 X
50	Front/Threaded rear spacer PCB clip	DLS 5XP4AA39 X

PCB clip for .126"/3.2 ± .004"/0.10 mm hole diameter and .063"/1.6 mm circuit board thickness.

X-ON Electronics

Largest Supplier of Electrical and Electronic Components

Click to view similar products for [D-Sub Standard Connectors](#) category:

Click to view products by [CONEC](#) manufacturer:

Other Similar products are found below :

[56F711-015](#) [012-9507-004](#) [LV242999-142T12](#) [015-0341-000](#) [015-0349-000](#) [015-0372-005](#) [015-0372-008](#) [015-8755-001](#) [020419-0104](#) [012-0467-000](#) [012-0515-000](#) [012-9507-034](#) [012-9507-114](#) [020745-0008](#) [609-25P](#) [CT2-14S-2PCA34](#) [CT2-18-11PCAU](#) [CT2-36-15SC](#) [CT6-14S-2SC](#) [CT6E14SA7SC](#) [CT6E22-14PC](#) [CT6E22-14PS](#) [CT6E22-22PS](#) [M83513/01-FC](#) [M85049/48-3-2F](#) [6STD09PCM99B70X](#) [6STD09SCM99B30X](#) [6STD09SCT99S40X](#) [6STD15PCT99S40X](#) [6STD15SCM99B30X](#) [6STD15SCT99S40X](#) [6STF09PCM05B70X](#) [7-135760-9](#) [MC11E-10-6SN](#) [747552-3](#) [MD1-21PS](#) [MDM-15SCBRM7-F222](#) [MDM96517-699](#) [MDM96521-744](#) [MDVB1-21SL1](#) [MIK0-1-7SH003](#) [MIKQ6-7SH076](#) [MIKQ7-7PH077](#) [MIKQ7-7PH11](#) [MIKQ7-7PH32](#) [MIKQ9-7PH003](#) [MJSV-28SL61](#) [MKJ4A1F14-55S](#) [8-135760-3](#) [8STD09PCM99B30X](#)