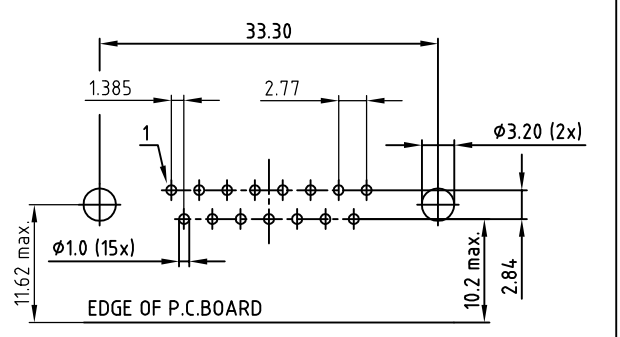
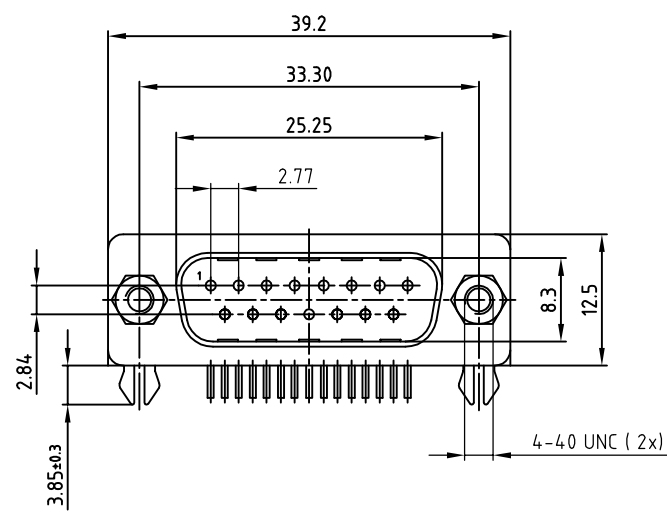
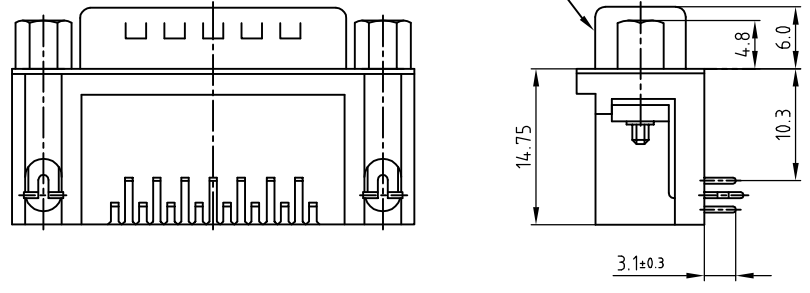


used for: D-SUB

SEE NOTE 4



RECOMMENDED P.C.B. LAYOUT (TOP VIEW)  
TOLERANCES: ±0.05mm

Directive 2002/95/EC RoHS compliant

SPECIFICATION

1. MATERIAL:
  - INSULATOR: THERMAL PLASTIC UL 94 V-0
  - CONTACTS: COPPER ALLOY
  - SHELL: STEEL
  - RIVET, BOARDLOCK: COPPER ALLOY
2. CONTACT PLATING:
  - UNDERPLATE: 40µin NICKEL
  - CONTACT AREA: GOLD PLATED
  - SOLDER TAILS AREA: GOLD PLATED
3. ELECTRICAL:
  - OPERATION VOLTAGE: 250 V AC max.
  - CURRENT RATING: 3 A max.
  - CONTACT RESISTANCE: 15 mOhm max.
  - INSULATION RESISTANCE: 3000 MOhm min @ 500 V DC
  - DIELECTRIC WITHSTANDING VOLTAGE: 1000 V AC / minute
  - OPERATING TEMPERATURE: -55°C TO +105°C
4. CONNECTOR IS PART MARKED: DLS2XP6AK44X CONEC ABC

THIS DRAWING MAY NOT BE COPIED OR REPRODUCED IN ANY WAY, AND MAY NOT BE PASSED ON TO A THIRD PARTY WITHOUT WRITTEN PERMISSION. OWNERSHIP AND COPYRIGHT OF CONEC GmbH DO NOT ALTER CAD DRAWING BY HAND

tolerance		dim. in mm	
0.	±0.5		
.0	±0.3		
.00	±0.2		
2011	date	name	
drawn	06.05.	Lehmenkühler	
appd.	06.05.	Fischer	
norm			
d-old			
a	Original		
rev.	description	date	name



scale:	2:1
material:	SEE SPECIFICATION
title:	D-SUB R/A 9.4mm MALE 90° 15pos. with snap-in + clinch nut + screw lock
dwg no:	16K1A2823
part no:	DLS2XP6AK44X
DIN-A	4
sh:	1/1

## X-ON Electronics

Largest Supplier of Electrical and Electronic Components

*Click to view similar products for [D-Sub Standard Connectors](#) category:*

*Click to view products by [CONEC](#) manufacturer:*

Other Similar products are found below :

[56F711-015](#) [012-9507-004](#) [LV242999-142T12](#) [015-0341-000](#) [015-0349-000](#) [015-0372-005](#) [015-0372-008](#) [015-8755-001](#) [020419-0104](#) [012-0467-000](#) [012-0515-000](#) [012-9507-034](#) [012-9507-114](#) [020745-0008](#) [609-25P](#) [M24308/2-23Z](#) [CT2-14S-2PCA34](#) [CT2-18-11PCAU](#) [CT2-36-15SC](#) [CT6-14S-2SC](#) [CT6E14SA7SC](#) [CT6E22-14PC](#) [CT6E22-14PS](#) [CT6E22-22PS](#) [M83513/01-FC](#) [M85049/48-3-2F](#) [6STD09PCM99B70X](#) [6STD09SCM99B30X](#) [6STD09SCT99S40X](#) [6STD15PCT99S40X](#) [6STD15SCM99B30X](#) [6STD15SCT99S40X](#) [6STF09PCM05B70X](#) [7-135760-9](#) [MC11E-10-6SN](#) [747552-3](#) [MD1-21PS](#) [MDM-15SCBRM7-F222](#) [MDM96517-699](#) [MDM96521-744](#) [MDVB1-21SL1](#) [MIK0-1-7SH003](#) [MIKQ6-7SH076](#) [MIKQ7-7PH077](#) [MIKQ7-7PH11](#) [MIKQ7-7PH32](#) [MIKQ9-7PH003](#) [MJSV-28SL61](#) [MKJ4A1F14-55S](#) [8-135760-3](#)