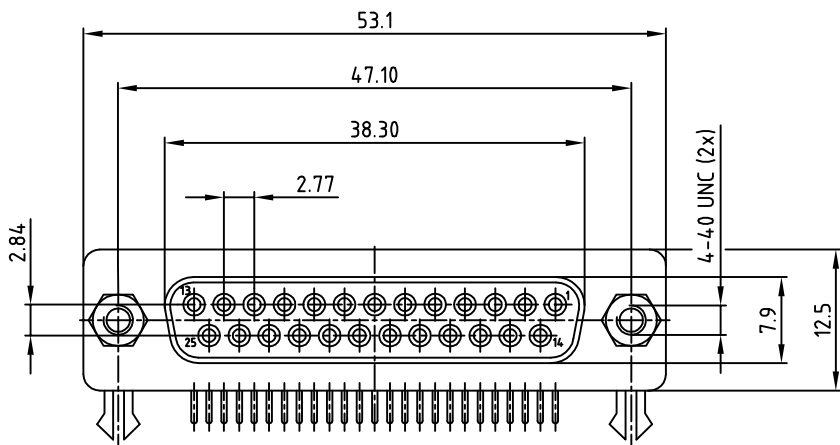
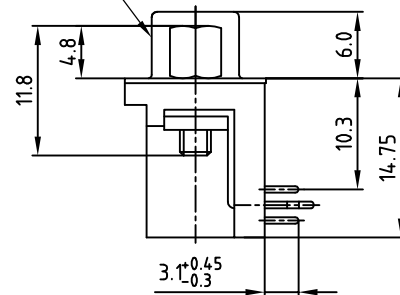
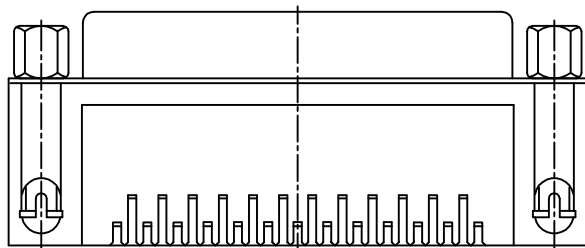


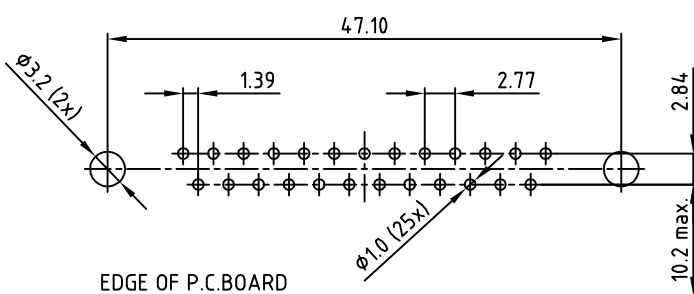
used for: D-SUB

SEE NOTE 4



RECOMMENDED P.C.B. LAYOUT (TOP VIEW)

TOLERANCES: ±0.05mm



SPECIFICATION

1. MATERIAL:
 - INSULATOR: THERMAL PLASTIC UL 94 V-0
 - CONTACTS: COPPER ALLOY
 - SHELL: STEEL
 - RIVET, BOARDLOCK: COPPER ALLOY
2. CONTACT PLATING:
 - UNDERPLATE: 50µm NICKEL
 - CONTACT AREA: GOLD FLASH
 - SOLDER TAILS AREA: GOLD FLASH
3. ELECTRICAL:
 - OPERATION VOLTAGE: 250 V AC max.
 - CURRENT RATING: 3 A
 - CONTACT RESISTANCE: 15 mOhm
 - INSULATION RESISTANCE: 3000 MOhm min. @ 500 V DC
 - DIELECTRIC WITHSTANDING VOLTAGE: 1000 V AC / MINUTE
 - OPERATING TEMPERATURE: -55°C TO +105°C
4. CONNECTOR IS PART MARKED: DLS3XS6AK44X CONEC ABC

Directive 2002/95/EC RoHS compliant

THIS DRAWING MAY NOT BE COPIED OR REPRODUCED IN ANY WAY, AND MAY NOT BE PASSED ON TO A THIRD PARTY, WITHOUT WRITTEN PERMISSION. OWNERSHIP AND COPYRIGHT OF CONEC GmbH DO NOT ALTER CAD DRAWING BY HAND

rev.	description	date	name
a	Original		

Unless Otherwise Specified Tolerance			dim. in mm
0	+0.5	-0.5	
0	+0.3	-0.3	
00	+0.2	-0.2	

scale:	2:1		
material:	SEE SPECIFICATION		
title:	D-SUB R/A 9.4mm CONNECTOR 25pos. FEMALE with 4.8 x 11.8mm hex bolt		
dwg no:	16K1A3216	DIN-A	3
part no:	DLS3XS6AK44X	sh:	1/1



X-ON Electronics

Largest Supplier of Electrical and Electronic Components

Click to view similar products for [D-Sub Standard Connectors](#) category:

Click to view products by [CONEC](#) manufacturer:

Other Similar products are found below :

[56F711-015](#) [012-9507-004](#) [LV242999-142T12](#) [015-0341-000](#) [015-0349-000](#) [015-0372-005](#) [015-0372-008](#) [015-8755-001](#) [020419-0104](#) [012-0467-000](#) [012-0515-000](#) [012-9507-034](#) [012-9507-114](#) [020745-0008](#) [609-25P](#) [M24308/2-23Z](#) [CT2-14S-2PCA34](#) [CT2-18-11PCAU](#) [CT2-36-15SC](#) [CT6-14S-2SC](#) [CT6E14SA7SC](#) [CT6E22-14PC](#) [CT6E22-14PS](#) [CT6E22-22PS](#) [M83513/01-FC](#) [M85049/48-3-2F](#) [6STD09PCM99B70X](#) [6STD09SCM99B30X](#) [6STD09SCT99S40X](#) [6STD15PCT99S40X](#) [6STD15SCM99B30X](#) [6STD15SCT99S40X](#) [6STF09PCM05B70X](#) [7-135760-9](#) [MC11E-10-6SN](#) [747552-3](#) [MD1-21PS](#) [MDM-15SCBRM7-F222](#) [MDM96517-699](#) [MDM96521-744](#) [MDVB1-21SL1](#) [MIK0-1-7SH003](#) [MIKQ6-7SH076](#) [MIKQ7-7PH077](#) [MIKQ7-7PH11](#) [MIKQ7-7PH32](#) [MIKQ9-7PH003](#) [MJSV-28SL61](#) [MKJ4A1F14-55S](#) [8-135760-3](#)