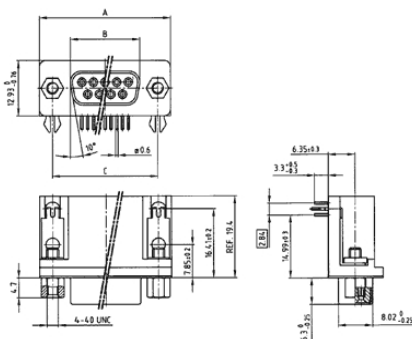


D-Sub Connector
Solder pin angled .590°
stamped contacts
with threaded lock and clip

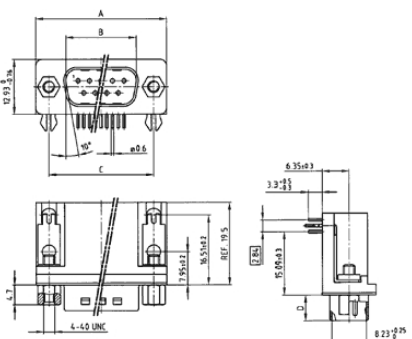


(click on the schematic(s) for a more detailed view)

Socket connector



Plug connector



Dimension for Socket Connectors			
No. of Pos.	A _{-0.75}	B _{-0.25}	C
9	31.19	16.46	25.00 ^{+0.12} _{-0.12}
15	39.52	24.79	33.30 ^{+0.15} _{-0.10}
25	53.42	38.50	47.04 ^{+0.13}
37	69.70	54.96	63.50 ^{+0.13}

Dimension for Plug Connectors				
No. of Pos.	A _{-0.75}	B ^{+0.25}	C	D _{-0.30}
9	31.19	16.79	25.00 ^{+0.12} _{-0.12}	6.12
15	39.52	25.12	33.30 ^{+0.15} _{-0.10}	6.12
25	53.42	38.84	47.04 ^{+0.13}	5.99
37	69.70	55.30	63.50 ^{+0.13}	5.99

Part Numbers

No. of Pos.	Socket connector tin - plated	
	Non RoHS Compliant	RoHS Compliant
9	302 A 11289 X	DLS1XS7AK59X
15	302 A 11299 X	DLS2XS7AK59X
25	302 A 11309 X	DLS3XS7AK59X
37	302 A 11319 X	DLS4XS7AK59X

No. of Pos.	Plug connector tin - plated with ground indent	
	Non RoHS Compliant	RoHS Compliant
9	301 A 10979 X	DLS1XP7AK59X
15	301 A 10989 X	DLS2XP7AK59X
25	301 A 10999 X	DLS3XP7AK59X
37	301 A 11009 X	DLS4XP7AK59X



REG.-Nr. 40000440



File #: E202784



File #: LR115000

X-ON Electronics

Largest Supplier of Electrical and Electronic Components

Click to view similar products for [D-Sub Contacts](#) category:

Click to view products by [CONEC](#) manufacturer:

Other Similar products are found below :

[D02-22-26S-10000](#) [8656352067LF](#) [131A15029X](#) [132A11019X](#) [132J22039X](#) [132A11029X](#) [132A11049X](#) [1757912-1](#) [188582-000](#)
[162A11889X](#) [1757913-1](#) [212558-1](#) [030-1955-000](#) [053744-0098](#) [053744-0099](#) [053745-0105](#) [053745-0111](#) [601098N003](#) [86303057NLF](#)
[131A11019X](#) [162A11819X](#) [40-9854MP](#) [1-208778-5](#) [FC120N2](#) [MC7526D/AA](#) [MC8122D/AA](#) [FC4010D-15](#) [FC4006D](#) [121A05329A](#)
[164C16669X](#) [86566620064LF](#) [C330-8997-101H](#) [131A13019X](#) [DLS3XS5AK40X](#) [09692825723](#) [030-1954-000](#) [L17DM53744207](#)
[L17RRD1M11400](#) [030-1952-000](#) [1655496](#) [030-1953-000](#) [030-1953-030](#) [132C11039X](#) [132J15019X](#) [132C15019X](#) [131A10029X](#)
[8638PSC2006LF](#) [8656453067LF](#) [86566520064LF](#) [L17DM537441](#)