

# D-SUB STANDARD

Crimp body (without contacts) – For wire size AWG 24...20 and AWG 28...24

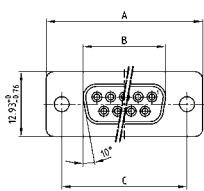


RoHS compliant – CSA listed, File No.: LR 115000-1 – UL listed, File No.: E202784

## DESCRIPTION

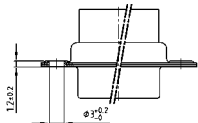
- For machined and stamped contacts, AWG 24...20 and AWG 28...24
- Mounting styles:
  - with through-hole, Ø .118" / 3 mm
  - with 4-40 UNC or M3 threaded insert
- Shell: Steel tin plated (brass tin plated or stainless steel available on request)

## SOCKET CONNECTOR



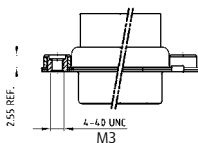
No. of pos.	A -0.76	B -0.25	C
09	31.19	16.46	25.00 +0.12
15	39.52	24.79	33.30 +0.15 -0.10
25	53.42	38.50	47.04 ±0.13
37	69.70	54.96	63.50 ±0.13
50	67.31	52.55	61.10 +0.14 -0.11

Mounting style: Through-hole

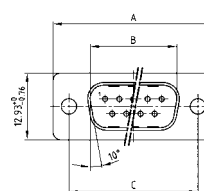


50 pos. = Dim. in ( \_ )

Mounting style: Threaded insert

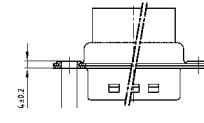


## PLUG CONNECTOR



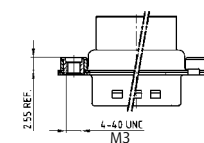
No. of pos.	A -0.76	B -0.25	C	D -0.3
09	31.19	16.79	25.00 +0.12	6.12
15	39.52	25.12	33.30 +0.15 -0.10	6.12
25	53.42	38.84	47.04 ±0.13	5.99
37	69.70	55.30	63.50 ±0.13	5.99
50	67.31	52.68	61.10 +0.14 -0.11	5.99

Mounting style: Through-hole



50 pos. = Dim. in ( \_ )

Mounting style: Threaded insert



## ORDER DATA

SOCKET CONNECTOR		
No. of pos.	Mounting style	Part Number
09	Through-hole	164X 11769 X
15	Through-hole	164X 11779 X
25	Through-hole	164X 11789 X
37	Through-hole	164X 11799 X
50	Through-hole	164X 11809 X
09	4-40 UNC Threaded insert	DSS 1XSXXG04 X
15	4-40 UNC Threaded insert	DSS 2XSXXG04 X
25	4-40 UNC Threaded insert	DSS 3XSXXG04 X
37	4-40 UNC Threaded insert	DSS 4XSXXG04 X
50	4-40 UNC Threaded insert	DSS 5XSXXG04 X
09	M3 Threaded insert	DSS 1XSXXG03 X
15	M3 Threaded insert	DSS 2XSXXG03 X
25	M3 Threaded insert	DSS 3XSXXG03 X
37	M3 Threaded insert	DSS 4XSXXG03 X
50	M3 Threaded insert	DSS 5XSXXG03 X

PLUG CONNECTOR		
No. of pos.	Mounting style	Part Number
09	Through-hole	163X 10019 X
15	Through-hole	163X 10029 X
25	Through-hole	163X 10039 X
37	Through-hole	163X 10049 X
50	Through-hole	163X 10059 X
09	4-40 UNC Threaded insert	DSS 1XPXXG04 X
15	4-40 UNC Threaded insert	DSS 2XPXXG04 X
25	4-40 UNC Threaded insert	DSS 3XPXXG04 X
37	4-40 UNC Threaded insert	DSS 4XPXXG04 X
50	4-40 UNC Threaded insert	DSS 5XPXXG04 X
09	M3 Threaded insert	DSS 1XPXXG03 X
15	M3 Threaded insert	DSS 2XPXXG03 X
25	M3 Threaded insert	DSS 3XPXXG03 X
37	M3 Threaded insert	DSS 4XPXXG03 X
50	M3 Threaded insert	DSS 5XPXXG03 X

## X-ON Electronics

Largest Supplier of Electrical and Electronic Components

*Click to view similar products for [D-Sub Standard Connectors](#) category:*

*Click to view products by [CONEC](#) manufacturer:*

Other Similar products are found below :

[56F711-015](#) [012-9507-004](#) [LV242999-142T12](#) [015-0341-000](#) [015-0349-000](#) [015-0372-005](#) [015-0372-008](#) [015-8755-001](#) [020419-0104](#) [012-0467-000](#) [012-0515-000](#) [012-9507-034](#) [012-9507-114](#) [020745-0008](#) [609-25P](#) [M24308/2-23Z](#) [CT2-14S-2PCA34](#) [CT2-18-11PCAU](#) [CT2-36-15SC](#) [CT6-14S-2SC](#) [CT6E14SA7SC](#) [CT6E22-14PC](#) [CT6E22-14PS](#) [CT6E22-22PS](#) [M83513/01-FC](#) [M85049/48-3-2F](#) [6STD09PCM99B70X](#) [6STD09SCM99B30X](#) [6STD09SCT99S40X](#) [6STD15PCT99S40X](#) [6STD15SCM99B30X](#) [6STD15SCT99S40X](#) [6STF09PCM05B70X](#) [7-135760-9](#) [MC11E-10-6SN](#) [747552-3](#) [MD1-21PS](#) [MDM-15SCBRM7-F222](#) [MDM96517-699](#) [MDM96521-744](#) [MDVB1-21SL1](#) [MIK0-1-7SH003](#) [MIKQ6-7SH076](#) [MIKQ7-7PH077](#) [MIKQ7-7PH11](#) [MIKQ7-7PH32](#) [MIKQ9-7PH003](#) [MJSV-28SL61](#) [MKJ4A1F14-55S](#) [8-135760-3](#)