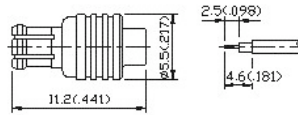


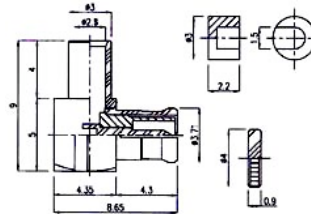
MCX Coaxial Connectors

1. MCX Straight Plug (Semi-Rigid Cable, Direct Solder Attachment)



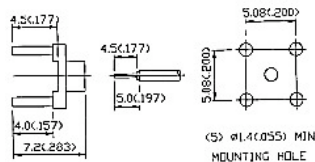
Ordering Code	Applicable Cable RG/U	Finish	Insulation
MCX-50PAG0113BRX	RG 405/U	Gold plated center contact & body	Teflon
MCX-50PAN0113BRX	RG 405/U	Center contact: Gold plated Body: Nickel plated	Teflon
MCX-50PAG0112BRX	RG 402/U	Gold plated center contact & body	Teflon
MCX-50PAN0112BRX	RG 402/U	Center contact: Gold plated Body: Nickel plated	Teflon

2. MCX Right Angle Plug (Semi-Rigid Cable, Direct Solder Attachment)



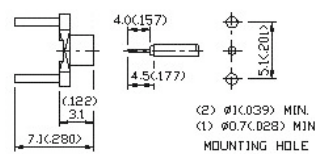
Ordering Code	Applicable Cable RG/U	Finish	Insulation
MCX-50PAG0613BRX	RG 405/U	Gold plated center contact & body	Teflon
MCX-50PAN0613BRX	RG 405/U	Center contact: Gold plated Body: Nickel plated	Teflon
MCX-50PAG0612BRX	RG 402/U	Gold plated center contact & body	Teflon
MCX-50PAN0612BRX	RG 402/U	Center contact: Gold plated Body: Nickel plated	Teflon

3. MCX PCB Cable Terminal (Semi-Rigid Cable, Direct Solder Attachment)



Ordering Code	Applicable Cable RG/U	Finish
MCX-50XXG1213BRX	RG 405/U	Gold plated body
MCX-50XXN1213BRX	RG 405/U	Nickel plated body
MCX-50XXG1212BRX	RG 402/U	Gold plated body
MCX-50XXN1212BRX	RG 402/U	Nickel plated body

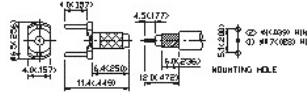
4. MCX PCB Cable Terminal (Semi-Rigid Cable, Direct Solder Attachment)



Ordering Code	Applicable Cable RG/U	Finish
MCX-50XXG1313BRX	RG 405/U	Gold plated body
MCX-50XXN1313BRX	RG 405/U	Nickel plated body
MCX-50XXG1312BRX	RG 402/U	Gold plated body

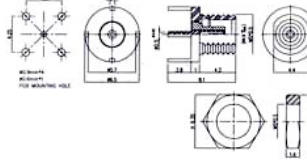
Ordering Code	Applicable Cable RG/U	Finish	Insulation
MCX-50SAG6402BRX	174,188A,316	Gold plated center contact & body	Teflon
MCX-50SAN6402BRX	174,188A,316	Center contact: Gold plated Body: Nickel plated	Teflon
MCX-50SAG6401BRX	178,196	Gold plated center contact & body	Teflon
MCX-50SAN6401BRX	178,196	Center contact: Gold plated Body: Nickel plated	Teflon

9. MCX PCB Cable Terminal-Crimp Type (Printed Circuit Board Receptacle)



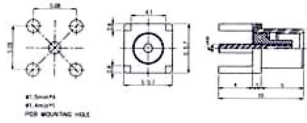
Ordering Code	Finish
MCX-50XXG1302BRX	Gold plated

10. MCX Straight PCB Mount Bulkhead Jack Receptacle (Printed Circuit Board Receptacle)



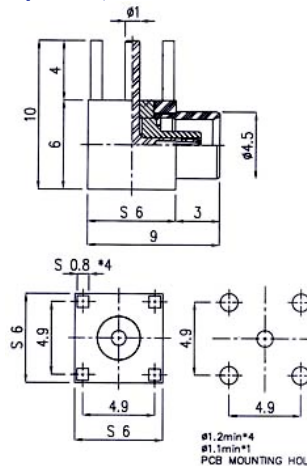
Ordering Code	Finish	Insulation
MCX-50SAG7050BRX	Gold plated center contact & body	Teflon
MCX-50SAN7050BRX	Center contact: Gold plated Body: Nickel plated	Teflon

11. MCX Straight PCB Mount Jack Receptacle (Printed Circuit Board Receptacle)



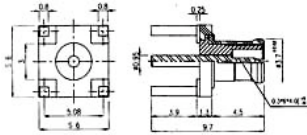
Ordering Code	Finish	Insulation
MCX-50SAG5151BRX	Gold plated center contact & body	Teflon
MCX-50SAN5151BRX	Center contact: Gold plated Body: Nickel plated	Teflon

12. MCX Right Angle PCB Mount Jack Receptacle (Printed Circuit Board Receptacle)



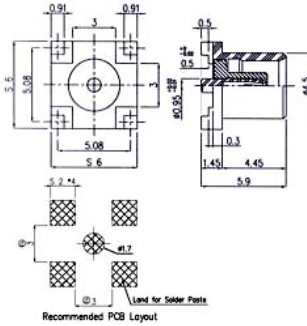
Ordering Code	Finish	Insulation
MCX-50SAG7551BRX	Gold plated center contact & body	Teflon
MCX-50SAN7551BRX	Center contact: Gold plated Body: Nickel plated	Teflon

13. MCX Straight PCB Mount Plug Receptacle (Printed Circuit Board Receptacle)



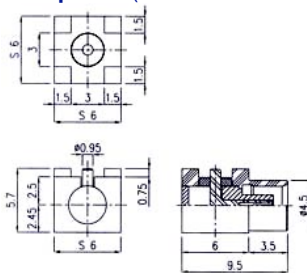
Ordering Code	Finish	Insulation
MCX-50PAG7152BRX	Gold plated center contact & body	Teflon
MCX-50PAN7152BRX	Center contact: Gold plated Body: Nickel plated	Teflon

14. MCX Straight Surface Mount Jack Receptacle (Surface Mount Receptacle)



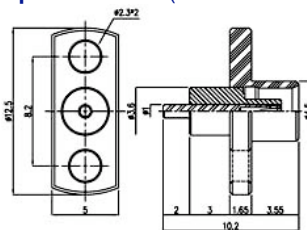
Ordering Code	Finish	Insulation
MCX-50SAG7653BRX	Gold plated center contact & body	Teflon
MCX-50SAN7653BRX	Center contact: Gold plated Body: Nickel plated	Teflon

15. MCX Right Angle Surface Mount Jack Receptacle (Surface Mount Receptacle)



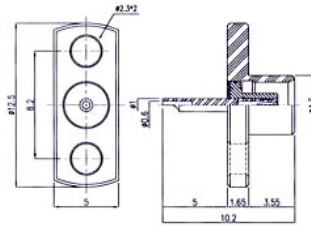
Ordering Code	Finish	Insulation
MCX-50SAG7654BRX	Gold plated center contact & body	Teflon
MCX-50SAN7654BRX	Center contact: Gold plated Body: Nickel plated	Teflon

16. MCX 2 Hole Flange Jack Receptacle, Exposed Teflon (Panel Mount Receptacle)



Ordering Code	Finish	Insulation
MCX-50SAG5055BRX	Gold plated center contact & body	Teflon
MCX-50SAN5055BRX	Center contact: Gold plated Body: Nickel plated	Teflon

17. MCX 2 Hole Flange Jack Receptacle, Solder Pot Contact (Panel Mount Receptacle)



Ordering Code	Finish	Insulation
MCX-50SAG5956BRX	Gold plated center contact & body	Teflon
MCX-50SAN5956BRX	Center contact: Gold plated Body: Nickel plated	Teflon

For other plating options contact factory

X-ON Electronics

Largest Supplier of Electrical and Electronic Components

Click to view similar products for [Circular Metric Connectors](#) category:

Click to view products by [CONEC](#) manufacturer:

Other Similar products are found below :

[600X518037X](#) [6STD15PCR99B70A](#) [8R4000A16M020](#) [8R5000A16M005](#) [1200910002](#) [1203580030](#) [1200910008](#) [1200910011](#) [1300140094](#)
[130203-0054](#) [1300140026](#) [1300150099](#) [RF-12S1N8A90DU](#) [1-3637-600-5205](#) [1612618](#) [21036836414](#) [8R4006A16M010](#) [8R5006A18A120](#)
[1604232](#) [1R3006A20M005](#) [RF-12P1N8A80DU](#) [RF-12P1N8A90DU](#) [41-40011](#) [42-01015](#) [4-22279-4](#) [4-22281-1](#) [4-22284-9](#) [43-00113](#) [43-](#)
[01088](#) [43-01203](#) [41-40013](#) [42-00008](#) [43-00343](#) [43-01032](#) [43-01162](#) [43-10000](#) [600X518050X](#) [SACC-DSI-FS-5P-PG9-L180 SC](#)
[8R5006A16M020](#) [8R5006A16M005](#) [8R4000A16M010](#) [6-22279-3](#) [1605332](#) [N03FA03144](#) [1300140077](#) [43-01338](#) [XS2RD4265](#) [RSC 4/9](#)
[XS2R-D426-1](#) [XS8A-0441](#)