

**Technical specification:**

Rated voltage: 4pos 5pos  
IEC 61076-2-101 250 V 60 V

Current rating: 4 A at 40°C  
IEC 61076-2-101

Insulation resistance: >=100 MΩ  
IEC 60512

Pollution degree: 3/2  
IEC 60664-1

Degree of protection: IP 67, in mated condition  
IEC 60529

Temperature range: -30°C ... +85°C  
EN 60512-11-10 -40°C  
EN 60512-11-4 -40°C ... +85°C

Mating cycles: >=100  
IEC 60512-9a

**Materials:**

Contact: CuZn, Ni b / Au 0,2 gal.

Contact carrier: PA GF, UL 94 V-0

Sealing: FPM / NBR

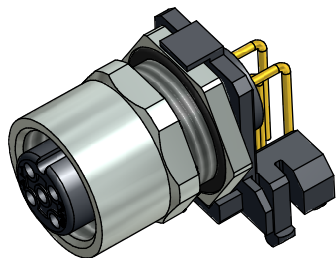
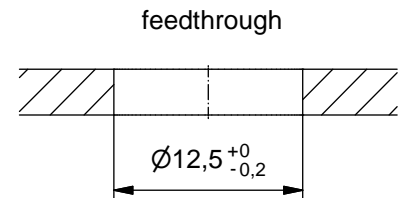
Socket housing: CuZn, nickel plated

Shroud: spring steel, nickel plated

**Installation specification:**

recommended torque: 0,8-1 Nm

Conec installation tool: Torque wrench: 36-000200  
Insert across flats 14: 36-000370  
Insert across flats 15: 36-000320



Part no:	Description:	Pos	Note:
43-01196	SAL - 12 - FKHW4	4	
43-01197	SAL - 12S - FKHW4	4	with shroud
43-01198	SAL - 12 - FKHW5	5	
43-01199	SAL - 12S - FKHW5	5	with shroud

DO NOT ALTER CAD DRAWING BY HAND

RoHS & REACH compliant

Index: d 26.08.13 MG Ä4884  
Data sheet revised, width across flats changed, installation specification added

general tolerance: 0 ± 0,50mm  
0,0 ± 0,25mm  
0,00 ± 0,10mm  
\* ± 1,5°

THIS DRAWING MAY NOT BE COPIED OR REPRODUCED IN ANY WAY, AND MAY NOT BE PASSED ON TO A THIRD PARTY WITHOUT WRITTEN PERMISSION. OWNERSHIP AND COPYRIGHT OF CONEC GmbH

dim. in mm

date	name
drawn 17.10.07	Fromm
appd. 29.02.08	W.Schmidt

**CONEC®**

title:  
**Female socket M12x1 angled, backmounting, dip solder**

dwg no:  
**43K1A511**

part no:

## X-ON Electronics

Largest Supplier of Electrical and Electronic Components

*Click to view similar products for CONEC manufacturer:*

Other Similar products are found below :

[1003W3SXX99A10X](#) [1008W8PXX55N20X](#) [1013W6SXX99A10X](#) [101A10019X](#) [101A10029X](#) [101A10039X](#) [101A10079X](#) [101B10079X](#)  
[101E10079X](#) [101E10099X](#) [101E10119X](#) [102A10049X](#) [102E10039X](#) [102E10079X](#) [102E10099X](#) [120X10019X](#) [120X10089X](#) [120X10099X](#)  
[121A04879A](#) [121A05329A](#) [121A10039X](#) [121A10149X](#) [121A10309X](#) [121A10439X](#) [121B10149X](#) [121E10949X](#) [122A10019X](#) [122A10089X](#)  
[122A10349X](#) [122A10459X](#) [122A10499X](#) [122A10619X](#) [122A10849X](#) [122A10889X](#) [122A10949X](#) [122A11089X](#) [122A11539X](#)  
[122A11699X](#) [122B11759X](#) [122B13029X](#) [122E11709X](#) [123C13039X](#) [124C10019X](#) [124C24039X](#) [13-000031](#) [13-000101](#) [13-000141](#) [13-](#)  
[000151](#) [13-000161](#) [13-000201](#)