

Technical specification:

Rated voltage: 4pos 5pos
IEC 61076-2-101 250 V 60 V

Current rating: 4 A at 40°C
IEC 61076-2-101

Insulation resistance: >=100 MΩ
IEC 60512

Pollution degree: 3/2
IEC 60664-1

Degree of protection: IP 67, in mated condition
IEC 60529

Temperature range: -30°C ... +85°C
EN 60512-11-10
-40°C
EN 60512-11-4
-40°C ... +85°C

Mating cycles: >=100
IEC 60512-9a

Materials:

Contact: CuZn, Ni b / Au 0,2 gal.

Contact carrier: PA GF, UL 94 V-0

Sealing: FPM / NBR

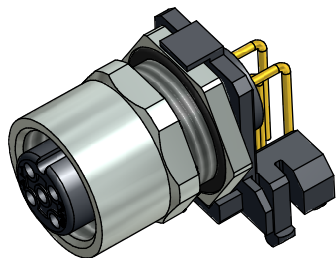
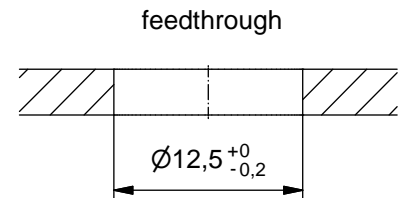
Socket housing: CuZn, nickel plated

Shroud: spring steel, nickel plated

Installation specification:

recommended torque: 0,8-1 Nm

Conec installation tool: Torque wrench: 36-000200
Insert across flats 14: 36-000370
Insert across flats 15: 36-000320



Part no:	Description:	Pos	Note:
43-01196	SAL - 12 - FKHW4	4	
43-01197	SAL - 12S - FKHW4	4	with shroud
43-01198	SAL - 12 - FKHW5	5	
43-01199	SAL - 12S - FKHW5	5	with shroud

DO NOT ALTER CAD DRAWING BY HAND

RoHS & REACH compliant

Index: d 26.08.13 MG Ä4884
Data sheet revised, width across flats changed, installation specification added

general tolerance: 0 ± 0,50mm
0,0 ± 0,25mm
0,00 ± 0,10mm
* ± 1,5°

THIS DRAWING MAY NOT BE COPIED OR REPRODUCED IN ANY WAY, AND MAY NOT BE PASSED ON TO A THIRD PARTY WITHOUT WRITTEN PERMISSION. OWNERSHIP AND COPYRIGHT OF CONEC GmbH

dim. in mm

date	name
drawn 17.10.07	Fromm
appd. 29.02.08	W.Schmidt

CONEC®

title:
Female socket M12x1 angled, backmounting, dip solder

dwg no:
43K1A511

part no:

X-ON Electronics

Largest Supplier of Electrical and Electronic Components

Click to view similar products for CONEC manufacturer:

Other Similar products are found below :

[1003W3SXX99A10X](#) [1003W3SXX99A30X](#) [1008W8PXX55N20X](#) [1013W6SXX99A10X](#) [101A10019X](#) [101A10029X](#) [101A10039X](#)
[101A10079X](#) [101A10119X](#) [101B10079X](#) [101E10079X](#) [101E10099X](#) [101E10119X](#) [102A10049X](#) [102E10039X](#) [102E10059X](#) [102E10079X](#)
[120X10019X](#) [120X10089X](#) [120X10099X](#) [121A04879A](#) [121A10039X](#) [121A10149X](#) [121A10309X](#) [121A10359X](#) [121A10389X](#)
[121A10439X](#) [121B10149X](#) [121E10949X](#) [122A10089X](#) [122A10349X](#) [122A10459X](#) [122A10499X](#) [122A10619X](#) [122A10849X](#) [122A10889X](#)
[122A10949X](#) [122A11089X](#) [122A11139X](#) [122A11539X](#) [122A11619X](#) [122A11699X](#) [122B11759X](#) [122B13029X](#) [122E11709X](#)
[123C13039X](#) [124C10019X](#) [124C24039X](#) [13-000031](#) [13-000101](#)