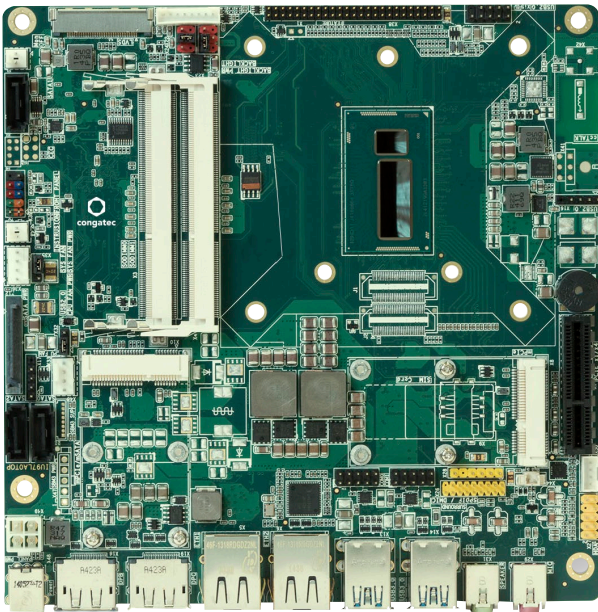


# INDUSTRIAL THIN MINI-ITX

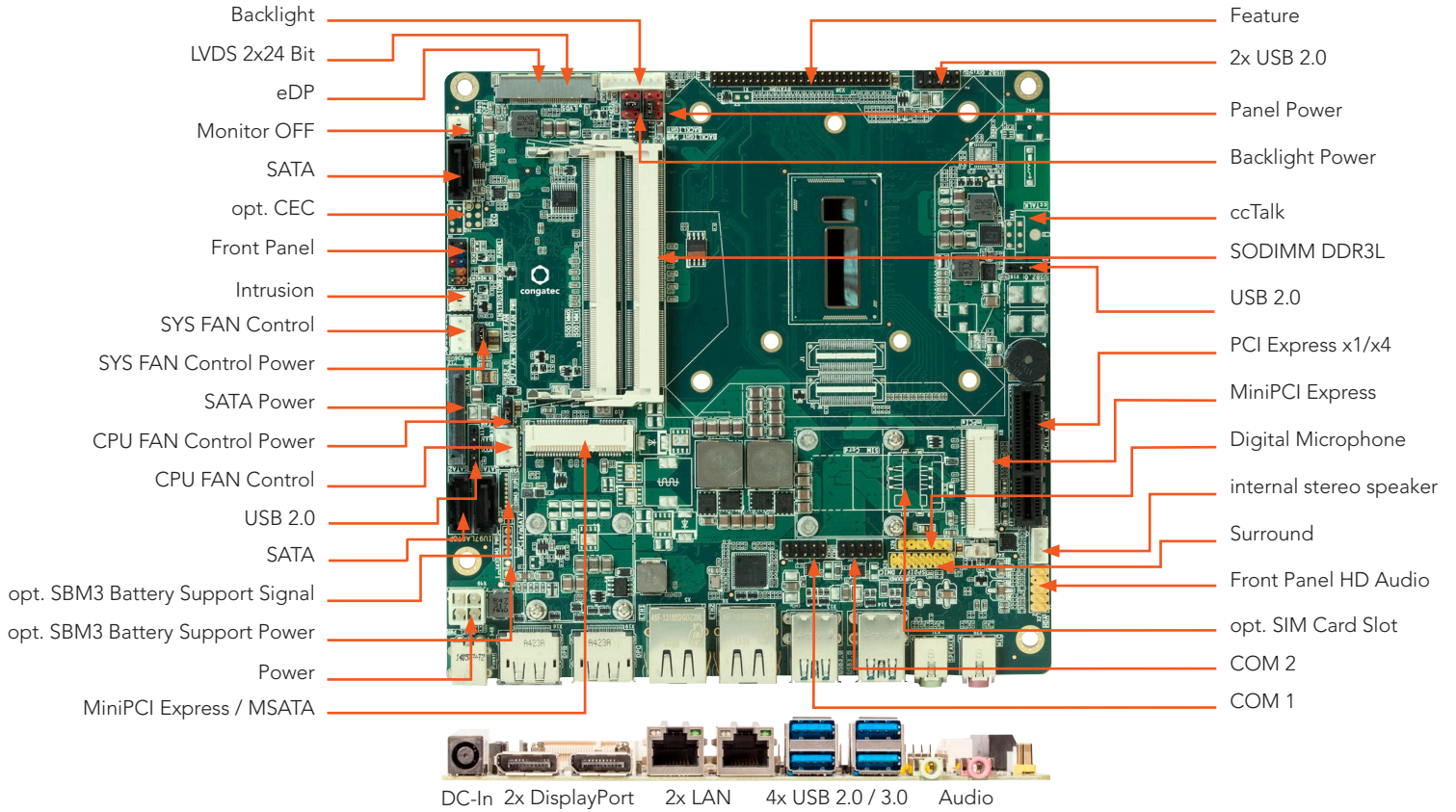
## conga-IC97



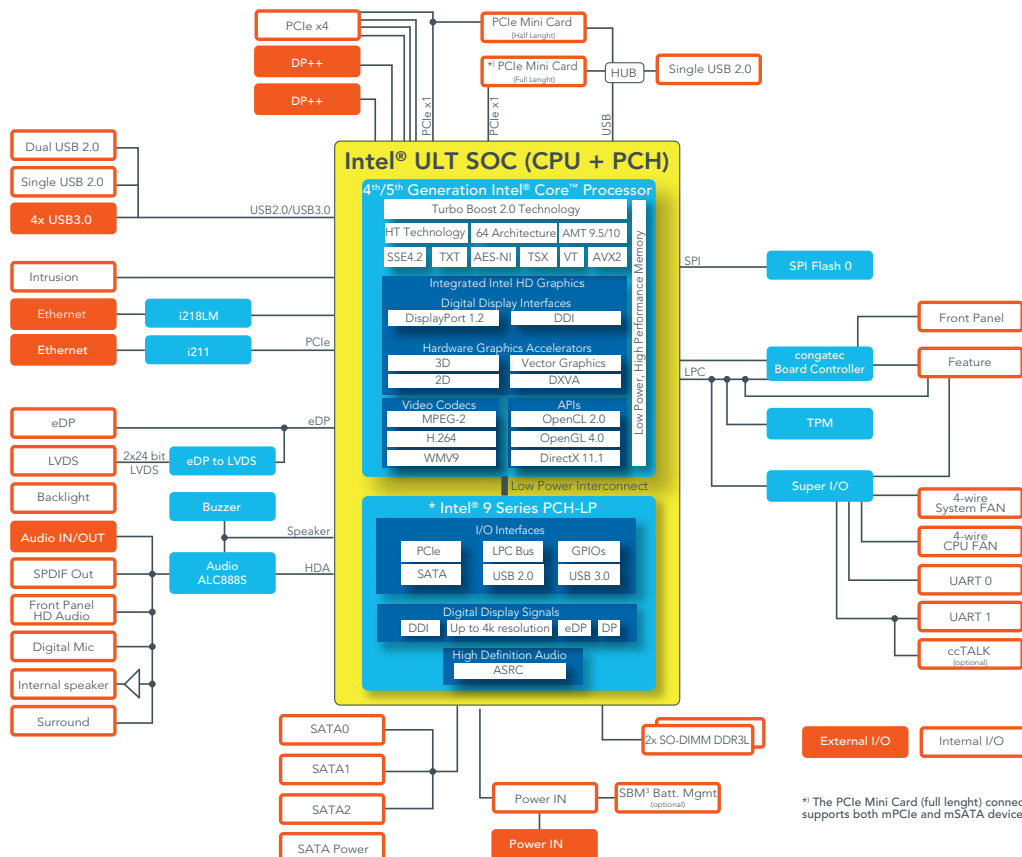
- Highest Performance Thin Mini-ITX board
- 5<sup>th</sup> Generation Intel® Core™ Mobile SOC U-Processors
- Improved Graphics Performance up to GT3 HD6000
- Wide Range Power Input 12-24 Volt
- congatec embedded Board Controller Features

Formfactor	Industrial Thin-Mini-ITX   170 x 170 mm				
CPU	Intel® Core™ i7-5650U	2.2 GHz Dual Core	Turbo Boost 3.2 GHz	4 MB Cache	TDP 15W GT3 HD 6000
	Intel® Core™ i5-5350U	1.8 GHz Dual Core	Turbo Boost 2.9 GHz	3 MB Cache	TDP 15W GT3 HD 6000
	Intel® Core™ i3-5010U	2.1 GHz Dual Core		3 MB Cache	TDP 15W HD 6000
	Intel® Celeron® 3765U	1.9 GHz Dual Core		2 MB Cache	TDP 10W HD Graphics
	Intel® Turbo Boost Technology   Intel® Hyper-Threading Technology (Intel® HT Technology)   Intel® Advanced Vector Extensions 2.0 (Intel® AVX2), Intel® Advanced Encryption Standard New Instructions (Intel® AES-NI)   Integrated dual channel memory controller   up to 25.6 GByte/sec. memory bandwidth   Integrated Intel® HD Graphics 6000 series with dynamic frequency up to 1.1 GHz   Intel® Clear Video HD Technology Intel® Virtualization Technology (Intel® VT)   Intel® Trusted Execution Technology (Intel® TXT)   Intel® Streaming SIMD Extensions 4.2 (Intel® SSE4.2) PCLMULQDQ Instruction   Intel® Secure Key   Intel® Transactional Synchronization Extensions (Intel® TSX)				
DRAM Memory	Support for 2x SO DIMM Socket (dual channel DDR3L up to 1600 MT/s)   max. 16GB				
Ethernet	Dual LAN Gbit / 100 Mbit / 10 Mbit; 1x Intel Gigabit Ethernet PHY i218LM (with AMT support); 1x Intel Gigabit Ethernet Controller i210/i211				
Sound	High Definition Audio Interface   Realtek ALC 888S   7.1-channel				
Graphics	Next Generation Intel® HD Graphics with OpenCL 2.0   OpenGL 4.X and DirectX11.1 support; up to three independent displays: DDI   DVI, DisplayPort 1.2; High performance hardware MPEG-2 decoding   WMV9 (VC-1) and H.264 (AVC) support Blu-ray support @ 40 MBit/s				
Graphic Interfaces	1x 24-bit Dual Channel LVDS Interface or eDP (x4) and 2x DisplayPort				
Internal Connectors	1x PCIe x4 Slot (Gen.2)   1x Full/Half-size Mini PCIe Slot shared with PCIe x1 slot   1x Full/Half-size Mini PCIe Slot (shared with mSATA)   3x SATA (6G)   1x mSATA (SATA-III; 600)   1x SATA Power   4x USB 2.0   1x LVDS (2x24 bit)   1x Embedded DisplayPort (x4)   1x Backlight (Power   control)   1x Monitor OFF   1x Surround   1x Front Panel HD Audio   1x Digital Microphone (SPDIF)   1x Internal stereo speaker   1x Serial Port COM1 (opt. as ccTALK)   1x Serial Port COM2   1x Feature connector - congatec custom (8 Bit General Purpose I/O)   1x Frontpanel (Power Switch, LEDs, Reset)   1x Intrusion (Case Open)   1x FAN CPU   1x FAN System   1x internal power header (12-24V)   1x opt. battery header signal + power (SBM3)   1x opt. CEC   1x opt. SIM Card Slot				
congatec embedded Controller	Multi-Stage Watchdog   non-volatile User Data Storage   Manufacturing and Board Information   Board Statistics   BIOS Setup Data Backup I <sup>2</sup> C bus (fast mode)   400 kHz   multi-master   Power Loss Control				
External Connectors (Frontpanel)	2x DisplayPort dp++   Audio In   Line Out   2x LAN RJ45   4x USB 3.0/2.0   1x PCIe x4 (via extension card)   1x DC-In (external input)				
Embedded BIOS	AMI Aptio® 2.X (UEFI) BIOS; SM-BIOS   BIOS Update   Logo Boot   Quiet Boot   HDD Password				
Security	The conga-IC97 can be optionally equipped with a discrete "Trusted Platform Module" (TPM 1.2 / 2.0). It is capable of calculating efficient hash and RSA algorithms with key lengths up to 2,048 bits and includes a real random number generator. Security sensitive applications such as gaming and e-commerce will benefit also with improved authentication, integrity and confidence levels.				
Power Specification	Power Management   ACPI S3/S4/DeepSx   Wake on time from S5   Power Supply 12V - 24V   2x FAN (CPU   system) monitored & controlled				
Operating Systems	Microsoft® Windows 10   Microsoft® Windows 10 IoT Enterprise   Microsoft® Windows 8   Microsoft® Windows 7   Linux   Microsoft® Windows® 7/8 embedded Standard				
Power Consumption	Typ. application: tbd.   see manual for full details				
Temperature:	Operating: 0 .. +60°C				
Humidity Operating:	Operating: 10 - 90% r. H. non cond.				
Size	170 x 170 mm (6.7" x 6.7")				

# conga-IC97 | Connectors



# conga-IC97 | Block diagram



# conga-IC97 | Order Information

Article	PN	Description
conga-IC97/i7-5650U	052501	Thin Mini-ITX board based on 5 <sup>th</sup> Gen Intel® Core™ i7-5650U dual core processor with 2.2GHz, 4MB L2 cache and 1600MT/s dual channel DDR3L SODIMM memory interface
conga-IC97/i5-5350U	052502	Thin Mini-ITX board based on 5 <sup>th</sup> Gen Intel® Core™ i5-5350U dual core processor with 1.8GHz, 3MB L2 cache and 1600MT/s dual channel DDR3L SODIMM memory interface
conga-IC97/i3-5010U	052503	Thin Mini-ITX board based on 5 <sup>th</sup> Gen Intel® Core™ i3-5010U dual core processor with 2.1GHz, 3MB L2 cache and 1600MT/s dual channel DDR3L SODIMM memory interface
conga-IC97/3765U	052504	Thin Mini-ITX board based on Intel® Celeron® 3765U dual core processor with 1.90GHz, 2MB L2 cache and 1600MT/s dual channel DDR3L SODIMM memory interface.

## Accessories

conga-IC87/CSA	052252	Active cooling solution for conga-IC97 and with 12V fan and Thin Mini-ITX height
conga-IC87/Retention Frame	052254	Retention frame for standard cooling (PN: 052252) for conga-IC97
conga-IC87/IO Shield-Standard	052256	IO shield for conga-IC97 with Standard Mini-ITX height
conga-IC87/IO Shield - Thin	052257	IO shield for conga-IC97 with Thin Mini-ITX height
DDR3L-SODIMM-1600 (2GB)	068755	DDR3L SODIMM memory module with 1600 MT/s (PC3L-12800S) and 2GB RAM
DDR3L-SODIMM-1600 (4GB)	068756	DDR3L SODIMM memory module with 1600 MT/s (PC3L-12800S) and 4GB RAM
DDR3L-SODIMM-1600 (8GB)	068757	DDR3L SODIMM memory module with 1600 MT/s (PC3L-12800S) and 8GB RAM
conga-Thin MITX/eDP to DP Adapter	052231	eDP to standard DisplayPort evaluation adapter for congatec Thin Mini-ITX boards
conga-Thin MITX/LVDS Adapter	052233	LVDS pin header evaluation adapter for congatec Thin Mini-ITX boards
PS65	10000145	65 Watt power supply, 19V, 3.42 A, plug 7.4x5.1x12.5mm
PS90	10000146	90 Watt power supply, 19V, 4.74 A, plug 7.4x5.1x12.5mm
cab-ThinMini-ITX-UART	14000121	UART cable with 9pin DSUB connector for congatec Thin Mini-ITX family
cab-ThinMini-ITX-eDP 1-1	14000129	eDP 1-1 cable for congatec Thin Mini-ITX family. Both sides are with 40pin ACES eDP connector plug.
cab-ThinMini-ITX-LVDS-OE	14000125	LVDS cable with open end for congatec Thin Mini-ITX family. Can be used also for eDP with open end.
cab-ThinMini-ITX-BKLT	14000127	Backlight cable for congatec Thin Mini-ITX family
cab-ThinMini-ITX-USB20-Single	14000122	Single USB 2.0 cable for congatec Thin Mini-ITX family
cab-ThinMini-ITX-USB20-Twin	14000123	Dual USB 2.0 cable for congatec Thin Mini-ITX family
SATA III cable 30cm, straight/straight	48000029	SATA III cable with 30cm length, shielded, end connectors straight/straight
SATA III cable 30cm, down/straight	48000030	SATA III cable with 30cm length, shielded, end connectors down/straight
cab-ThinMini-ITX-SATA-Power	14000120	SATA power cable for congatec Thin Mini-ITX family. One end 15 pin SATA connector to to 3x15 pin SATA connector
LE910 Mini PCIe		4G / LTE Mini PCI Express card
HE910 Mini PCIe		3G / UMTS / HSPA+ Mini PCI Express card
SSD 256		256 GByte Intel® SSD Pro 2500 Series (16nm, MLC)
SSD 128		128 GByte Intel® SSD Pro 2500 Series (16nm, MLC)

## X-ON Electronics

Largest Supplier of Electrical and Electronic Components

*Click to view similar products for [Single Board Computers](#) category:*

*Click to view products by [Congatec](#) manufacturer:*

Other Similar products are found below :

[MANO882VPGGA-H81](#) [SSD3200W-S-SLC-INN 20-101-0738](#) [MVME61006E-2173R](#) [SHB230DGGA-RC](#) [IMB210VGGA](#) [IB915F-3955](#)  
[MI958F-16C](#) [S2600WFT](#) [S2600STB](#) [BBS2600BPS](#) [BLKNUC7I3DNHNC1978015](#) [DEV-17745](#) [BEAGLEBOARD POCKET](#) [MICROSOM](#)  
[I2 + WIFI/BT](#) [HUMMINGBOARD-I2EX](#) [BASE + WIFI/BT](#) [HUMMINGBOARD-I4 PRO + WIFI/BT](#) [VAB-600-B](#) [MITX-440-DVI-2E](#)  
[ATCA-7365-D-24GB](#) [NITX-315-DEVKIT](#) [A13-SOM-512](#) [NITX-315](#) [BANANA PI BPI-M1+](#) [A13-SOM-WIFI-4GB](#) [AM3359-SOM-EVB-](#)  
[IND](#) [UPS-APLC2-A10-0432](#) [DFR0419](#) [UPS-APLP4-A10-0864](#) [UPS-APLP4-A10-0432](#) [UPS-APLP4-A10-08128](#) [MI977F-Q27](#) [BBBLUE](#)  
[IB811F-I30](#) [DFR0470-ENT](#) [Nit6Q\\_i](#) [M2M \(TELIT\)](#) [RELAY PROFESSIONAL](#) [GCS22.2.080.2.2.I](#) [GCS22.8.100.4.2.I](#) [GLS11.2.053.2.2.E](#)  
[A20-OLINUXINO-LIME-E16GS16M](#) [A20-OLINUXINO-LIME-S16M](#) [A20-OLINUXINO-LIME2-E16GS16M](#) [A20-OLINUXINO-MICRO-](#)  
[S16M](#) [BANANA PI BPI-W2](#) [T2-OLINUXINO-LIME2-S16M-IND](#) [T2-OLINUXINO-MICRO-E8GS16M-IND](#) [T2-OLINUXINO-MICRO-](#)  
[S16M-IND](#)