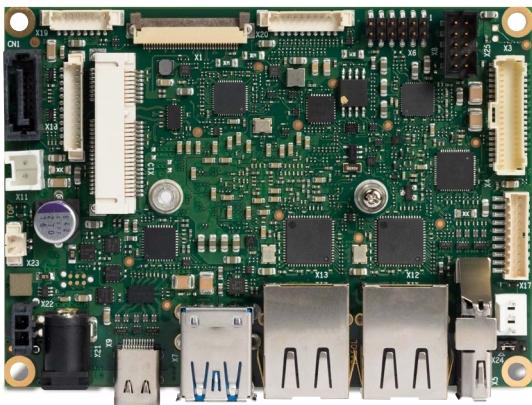


# INDUSTRIAL PICO-ITX

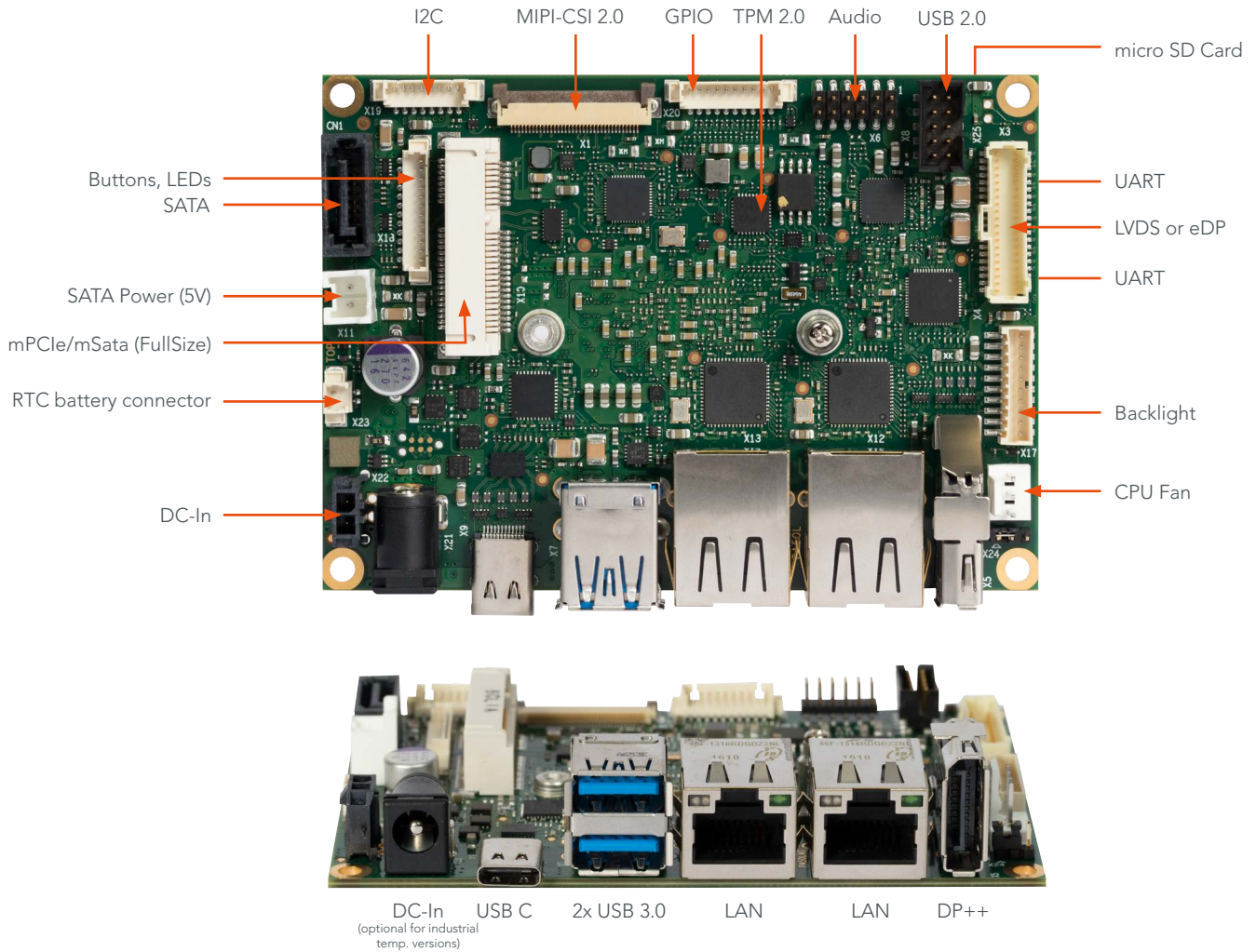
## conga-PA5



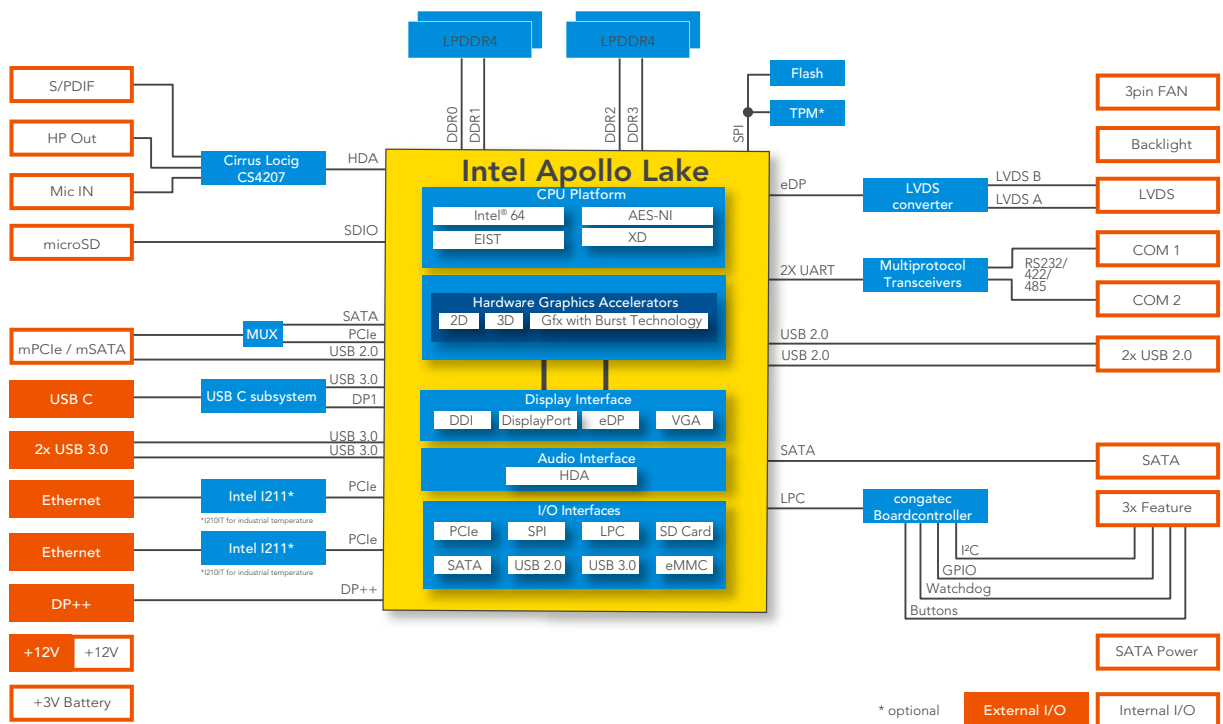
- 5<sup>th</sup> Generation Intel Atom®, Intel® Celeron® and Intel® Pentium® Processors
- Low Power CPUs 6 to 12 Watt TDP
- Enhanced Intel HD Graphics Generation 9
- Compact design for size-sensitive devices in harsh environments
- Long life components for 24/7 embedded use
- Two Intel® i210/211 Ethernet controllers allowing for enhanced industrial communication
- Extended Temperature variants
- On board TPM for enhanced security

Formfactor	pico-ITX Singleboard Computer   100x72 mm				
CPU	Intel® Atom™ x7-E3950	2.00 GHz (Burst)	1.6 GHz Clock	Quad Core	L2 cache 2MB   12W TDP
	Intel® Atom™ x5-E3940	1.80 GHz (Burst)	1.6 GHz Clock	Quad Core	L2 cache 2MB   9.5W TDP
	Intel® Atom™ x5-E3930	1.80 GHz (Burst)	1.3 GHz Clock	Dual Core	L2 cache 2MB   6.5W TDP
	Intel® Pentium® N4200	2.50 GHz (Burst)	1.1 GHz Clock	Quad Core	L2 cache 2MB   6W TDP
	Intel® Celeron® N3350	2.40 GHz (Burst)	1.1 GHz Clock	Dual Core	L2 cache 2MB   6W TDP
	Intel® Celeron® J3455	2.30 GHz (Burst)	1.5 GHz Clock	Quad Core	L2 cache 2MB   10W TDP
DRAM Memory	up to 4 Channels onboard LPDDR4 (V1.1) with up to 2400 MT/s   max. 8 GB				
Chipset	Integrated in SoC				
Ethernet	2x LAN Gbit / 100 Mbit / 10 Mbit   Intel Gigabit Ethernet controller i211 (i210 for industrial temperature variants)				
Sound	High Definition Audio Interface   Cirrus Logic CS4207				
Graphics	Intel® Gen 9 HD Graphics with support for DirectX12   OpenGL 4.3   OpenCL 2.0   OpenGL ES 3.x   MPEG2 full HW acceleration with H.265/HEVC decoding and H.264 encoding   VP9   PAVP 3.x   HDCP 1.4   MVC and 2x independent display support in 4K (3840 x 2160 px) @30 Hz or WQXGA (2560 x 1600 px) @60 Hz				
Graphic Interfaces	1x 18/24-bit Single/Dual Channel LVDS Interface or eDP 1.3   1x DisplayPort DP++   up to 4096x2160 @ 60Hz with DP				
Internal Connectors	1x miniPCIe or mSATA full size   1x SATA (6G) (with auxiliary +5V power connector for 2.5" HDD)   2x USB 2.0   1x LVDS 18/24bit or eDP 1.3   1x Backlight power connector   1x Line Out   1x Mic In   1x S/PDIF Out   1x Power In (+12V)   2x COM (RS232 / RS-485 / RS422)   1x Fan Connector   3x Feature Connector   micro SD Card   MIPI-CSI 2.0				
External Connectors (Frontpanel)	1x DisplayPort DP++   2x LAN RJ45   1x USB 3.0 Type C (with PD and DP++)   2x USB 3.0   1x DC-In (optional for industrial temperature variants)				
congatec embedded Controller	Multi-Stage Watchdog   non-volatile User Data Storage   Manufacturing and Board Information   Board Statistics   BIOS Setup Data Backup   I²C bus (fast mode, 400 kHz, multi-master)   Power Loss Control				
Embedded BIOS	AMI Aptio® 2.X (UEFI) BIOS; SM-BIOS   BIOS Update   Logo Boot   Quiet Boot   HDD Password				
Security	Integrated Intel® PTT (TPM 2.0) or Infineon SLB9670 (SPI TPM 2.0)				
Power Specification	Power Supply 12V   RTC battery				
Operating Systems	Microsoft® Windows 10   Microsoft® Windows 10 IoT Enterprise   Microsoft® Windows 10 IoT Core   Linux   Android				
Temperature	Commercial Variants:	Operating Temperature: 0 .. +60°C		Storage Temperature: -20 .. +70°C	
	Industrial Variants:	Operating Temperature: -40 .. +85°C		Storage Temperature: -40 .. +85°C	
Humidity	Operating:	10 - 90% r. H.			
	Storage:	5 - 95% r.H.			
Size	100 x 72 mm (~3.9 x 2.8")				

# conga-PA5 | Connectors



# conga-PA5 | Block diagram



# conga-PA5 | Order Information

conga-PA5 SBC	PN	Description
conga-PA5/E3950-8G	048100	pico-ITX board based on Intel® Atom™ x7-E3950 quad core processor with 2.00 GHz, 2MB cache and 8 GB 2400 MT/s onboard memory
conga-PA5/E3940-4G	048101	pico-ITX board based on Intel® Atom™ x5-E3940 quad core processor with 1.80 GHz, 2MB cache and 4 GB 2133 MT/s onboard memory
conga-PA5/E3930-4G	048102	pico-ITX board based on Intel® Atom™ x5-E3930 dual core processor with 1.80 GHz, 2MB cache and 4 GB 2133 MT/s onboard memory
conga-PA5/i-E3950-8G	048110	pico-ITX board based on Intel® Atom™ x7-E3950 quad core processor with 2.00 GHz, 2MB cache and 8 GB 2400 MT/s onboard memory. Extended temperature version -40°C to 85°C
conga-PA5/i-E3940-4G	048111	pico-ITX board based on Intel® Atom™ x5-E3940 quad core processor with 1.80 GHz, 2MB cache and 4 GB 2133 MT/s onboard memory. Extended temperature version -40°C to 85°
conga-PA5/i-E3930-4G	048112	pico-ITX board based on Intel® Atom™ x5-E3930 dual core processor with 1.80 GHz, 2MB cache and 4 GB 2133 MT/s onboard memory. Extended temperature version -40°C to 85°C
conga-PA5/N4200-8G	048120	pico-ITX board based on Intel® Pentium® N4200 quad core processor with 2.50 GHz, 2MB cache and 8 GB 2400 MT/s onboard memory
conga-PA5/J3455-4G	048122	pico-ITX board based on Intel® Celeron® J3455 quad core processor with 1.52GHz up to 2.30 GHz and 4GB 2400MT/s LPDDR4 onboard memory
conga-PA5/N4200-4G	048123	pico-ITX board based on Intel® Pentium® N4200 quad core processor with 1.5/2.5 GHz and 4GB 2400MT/s LPDDR4 onboard memory
conga-PA5/N3350-4G	048121	pico-ITX board based on Intel® Celeron™ N3350 dual core processor with 2.40 GHz, 2MB cache and 4 GB 2400 MT/s onboard memory

## Cooling Solution

PA5/HSP-T	048150	Heatspreader solution for conga-PA5 based on Pentium and Celeron processors. All standoffs are with M2.5 thread.
PA5/i-HSP-T	048151	Heatspreader solution for conga-PA5 based on Atom E39xx processors. All standoffs are with M2.5 thread.
PA5/CSP-T	048152	Passive cooling solution for conga-PA5 based on Pentium and Celeron processors and heat sink with 12mm heatsink fins. All standoffs are with M2.5 thread.
PA5/i-CSP-T	048153	Passive cooling solution for conga-PA5 based on Atom E39xx processors with 12mm heatsink fins. All standoffs are with M2.5 thread.
PA5/HSP-B	048154	Heatspreader solution for conga-PA5 based on Pentium and Celeron processors. All standoffs are with 2.7mm bore hole.
PA5/i-HSP-B	048155	Heatspreader solution for conga-PA5 based on Atom E39xx processors. All standoffs are with 2.7mm bore hole.

## Accessories

PA5 cable kit	14000203	Cable Kit for conga-PA5 containing cab-Pico-ITX-USB2.0-Twin, cab-Pico-ITX-Audio Cable Adapter, cab-Pico-ITX-Buttons-LED, cab-Pico-ITX-GPIO, cab-Pico-ITX-RS232, cab-Pico-ITX-RS485, cab-Pico-ITX-External-Power, cab-Pico-ITX-Feature, cab-Pico-ITX-SATA-Power, SATA Cable and Mini-PCIe full-size card extender
cab-Pico-ITX-LVDS	14000211	LVDS data cable for Pico-ITX to connect LCD panel AUO G170EG01 V.1 (panel part number #10000132 17" LVDS Panel G170EG01 V.1)
cab-Pico-ITX-Backlight	14000206	Backlight power cable for Pico-ITX to connect LCD panel AUO G170EG01 V.1 (panel part number #10000132 17" LVDS Panel G170EG01 V.1)
cab-Pico-ITX-RS232	14000152	RS232 internal cable adapter, DSUB9 male, length 150mm
cab-Pico-ITX-RS422	14000153	RS422 cable adapter, DSUB9 male, length 150mm
cab-Pico-ITX-RS485	14000154	RS485 cable adapter, DSUB9 male, length 150mm
cab-Pico-ITX-GPIO	14000151	GPIO cable, free end, length 150 mm
cab-Pico-ITX-Buttons-LED	14000147	Buttons and LEDs cable, length 150 mm
cab-Pico-ITX-Power	14000172	Internal power cable for industrial versions of conga-PA5, length 150 mm
Power Supply 60W	10000470	PSU, 60W, 12V/5A, Plug 5.5x2.5mm / 10mm length

This datasheet should be read in conjunction with "[Errata sheet - congatec xA5 designs](#)", available in the document section of congatec's webportal.

© 2021 congatec GmbH.  
All rights reserved.

All data is for information purposes only. Although all the information contained within this document is carefully checked, no guarantee of correctness is implied or expressed. Product names, logos, brands, and other trademarks featured or referred are the property of their respective trademark holders. These trademark holders are not affiliated with congatec AG. Rev. Mar 25, 2021 KF

## X-ON Electronics

Largest Supplier of Electrical and Electronic Components

*Click to view similar products for [Single Board Computers](#) category:*

*Click to view products by [Congatec](#) manufacturer:*

Other Similar products are found below :

[MANO882VPGGA-H81](#) [SSD3200W-S-SLC-INN 20-101-0738](#) [MVME61006E-2173R](#) [SHB230DGGGA-RC](#) [IMB210VGGA](#) [IB915F-3955](#)  
[MI958F-16C](#) [S2600WFT](#) [S2600STB](#) [BBS2600BPS](#) [BLKNUC7I3DNHNC1978015](#) [DEV-17745](#) [BEAGLEBOARD POCKET](#) [MICROSOM](#)  
[I2 + WIFI/BT](#) [HUMMINGBOARD-I2EX](#) [BASE + WIFI/BT](#) [HUMMINGBOARD-I4 PRO + WIFI/BT](#) [VAB-600-B](#) [RT5350F-OLINUXINO-](#)  
[EVB](#) [MITX-440-DVI-2E](#) [ATCA-7365-D-24GB](#) [NITX-315-DEVKIT](#) [A13-SOM-512](#) [NITX-315](#) [BANANA PI BPI-M1+](#) [A13-SOM-WIFI-](#)  
[4GB](#) [AM3359-SOM-EVB-IND](#) [UPS-APLC2-A10-0432](#) [DFR0419](#) [UPS-APLP4-A10-0864](#) [UPS-APLP4-A10-0432](#) [UPS-APLP4-A10-08128](#)  
[MI977F-Q27](#) [BBBLUE](#) [IB811F-I30](#) [DFR0470-ENT](#) [Nit6Q\\_i](#) [M2M \(TELIT\)](#) [RELAY](#) [PROFESSIONAL](#) [GCS22.2.080.2.2.I](#)  
[GCS22.8.100.4.2.I](#) [GLS11.2.053.2.2.E](#) [A20-OLINUXINO-LIME-E16GS16M](#) [A20-OLINUXINO-LIME-S16M](#) [A20-OLINUXINO-LIME2-](#)  
[E16GS16M](#) [A20-OLINUXINO-MICRO-E16GS16M](#) [A20-OLINUXINO-MICRO-S16M](#) [BANANA PI BPI-W2](#) [T2-OLINUXINO-LIME2-](#)  
[S16M-IND](#)