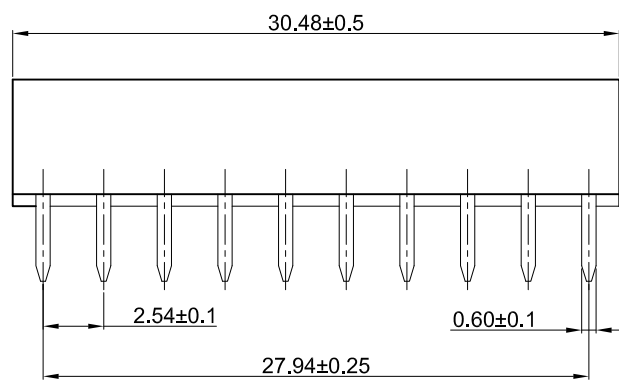
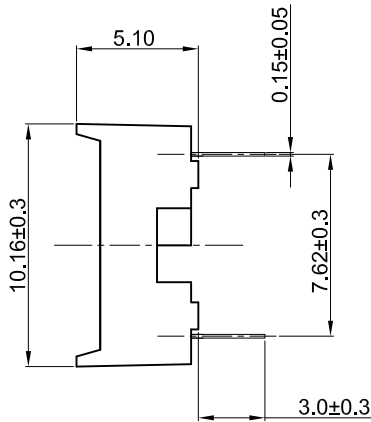
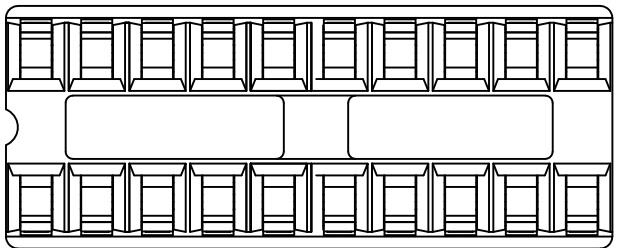
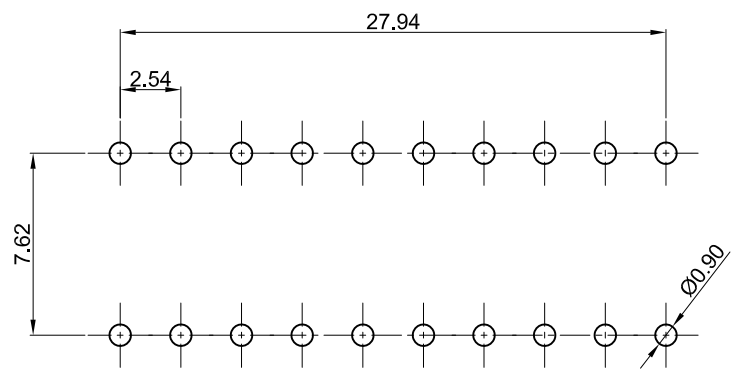


1	2	3	4	5	6	7	8	
Dept	晨翔2.54mm IC母座, 24P, DIP, 黑色胶芯, 脚距7.62宽, 有杠, 端子镀锡			REV.	DESCRIPTION	DRAWN	CHECKED	APPROVED
Qty	1			A	NEW RELEASE	JLZ 06/18/24'	~	
DC	1							
ED	1							
IE	1							
ISO	1							
PD	1							
R&D	1							
SD	1							
QA	1							
QC	1							
QF	1							
晨翔料号:DS1009-24AT1NS-0A2								

The information provided herein is from CONNELY Electronic Co., Ltd. and is confidential. Any disclosure to a party other than the recipient is prohibited. The intellectual properties and its rights contained herein, including but not limited to, trademarks, patents, copyrights, trade secrets, and technical know-how, are owned exclusively by CONNELY or its affiliates. Unauthorized use of this information in any format or manner. CONNELY may enforce its intellectual property rights at its own discretion; failures or delays to exercise such rights does not constitute a waiver of such rights.



- 备注:
- 电性说明:
 - 接触阻抗: 30毫欧最大
 - 耐压: 600伏交流电一分钟
 - 绝缘阻抗: 1000兆欧最小
 - 额定电流: 1安
 - 环境特性:
 - 工作温度: -40~+105° C
 - 材料:
 - 端子: 磷铜, 镍底镀锡
 - 胶芯: PBT, 黑色, 阻燃



PCB孔位尺寸参考
公差: ±0.05

GENERAL TOLERANCE		ANGLE TOLERANCE		PROJECTION		TITLE	2.54mm IC SOCKET
X.	±0.60	X.	±5°	UNITS	mm		Stamping Type
.X	±0.38	.X	±3°	SHEET SIZE	A4	SERIES	DS1009 SERIES
.XX	±0.25	.XX	±2°	晨翔电子有限公司 CONNELY ELECTRONIC CO. LTD			
DRAWING TYPE		CUSTOMER					
SCALE		1:1 SHEET 1 OF 1					
DRAWING NO.		C-DS1009-XXXX-XXX-A					

X-ON Electronics

Largest Supplier of Electrical and Electronic Components

Click to view similar products for [Connfly](#) manufacturer:

Other Similar products are found below :

[DS1001-01-06BT1NSF6X](#) [DS1001-01-06BT1NST1X-JKB](#) [DS1001-01-08BT1NSF6S](#) [DS1001-01-08BT1NSF6X-JKB](#)
[DS1001-01-14BT1NSF6X](#) [DS1001-01-14BT1NSF6X-JKB](#) [DS1001-01-16BT1NSF6S](#) [DS1001-01-16BT1NSF6X-JKB](#)
[DS1001-01-18BT1NSF6S](#) [DS1001-01-20BT1NSF6S](#) [DS1001-01-20BT1NSF6S-JKB](#) [DS1001-01-24BT1NSF6S](#) [DS1001-01-24BT1WSF6S](#)
[DS1001-01-28BT1NSF6S](#) [DS1001-01-28BT1NSF6S-JKB](#) [DS1001-01-28BT1WSF6S](#) [DS1001-01-32BT1WSF6S](#) [DS1001-01-32BT1WSF6S-](#)
[JKB](#) [DS1001-01-40BT1WSF6S](#) [DS1001-01-40BT1WSF6S-JKB](#) [DS1001-02-08N13](#) [DS1001-02-14N13](#) [DS1001-02-16N13](#)
[DS1001-02-28W13](#) [DS1001-02-32W13](#) [DS1001-02-40W13](#) [DS1002-01-1*10R13](#) [DS1002-01-1*10V13](#) [DS1002-01-1*13V13](#) [DS1002-01-](#)
[1*14V13](#) [DS1002-01-1*16R13](#) [DS1002-01-1*16S13](#) [DS1002-01-1*1R13](#) [DS1002-01-1*1V13](#) [DS1002-01-1*20V13](#) [DS1002-01-1*2R13](#)
[DS1002-01-1*2V13](#) [DS1002-01-1*32V13](#) [DS1002-01-1*36V13](#) [DS1002-01-1*3V13](#) [DS1002-01-1*4R13](#) [DS1002-01-1*4S13](#) [DS1002-01-](#)
[1*4V13](#) [DS1002-01-1*50V13](#) [DS1002-01-1*5S13](#) [DS1002-01-1*5V13](#) [DS1002-01-1*60V13](#) [DS1002-01-1*64R13](#) [DS1002-01-1*64V13](#)
[DS1002-01-1*6S13](#)