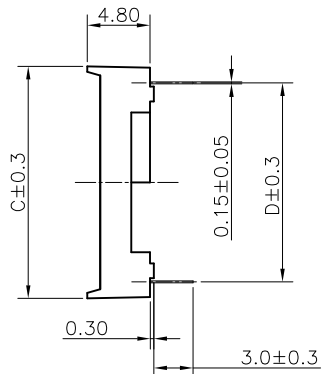
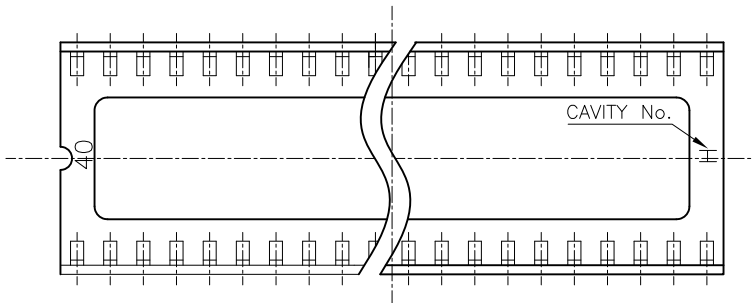


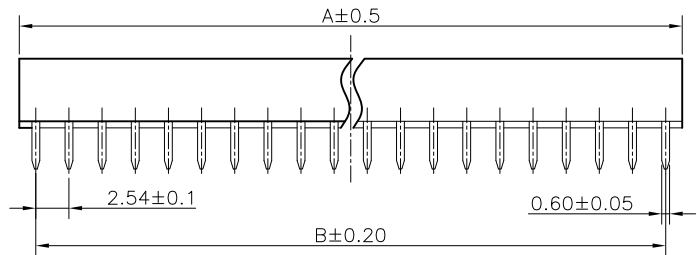
REV.	DESCRIPTION	DRAWN	CHECKED	APPROVED
A	NEW RELEASE	LJH 09/28/05'	~	LJC 09/28/05'
B	ADD W/ Kink Figure	LL 11/04/06'	~	LJC 11/04/06'
C	ADD P/N Code	LJC 12/10/13'		



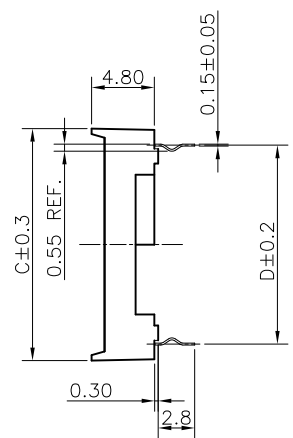
- NOTES:
- ELECTRICAL CHARACTERISTICS:
    - CONTACT RESISTANCE: 20mΩ Max.
    - DIELECTRIC WITHSTANDING VOLTAGE: 500V AC(rms) FOR 1 MINUTE.
    - INSULATION RESISTANCE: 1000MΩ Min.
  - ENVIRONMENT CHARACTERISTICS:
    - TEMPERATURE: -20°C~+105°C.
  - PRODUCT NUMBER CODE:
 

DS1009 - X X X X X - X X X


    - Packing Type(Box): ②
      - 2: 2 inner box/outer box
      - 4: 4 inner box/outer box
      - 6: 6 inner box/outer box
    - Product Packing Type: ③
      - A: Tube + Plastic Nail
      - B: Tube + Rubber
      - C: Foam Board
    - Housing Material: ④
      - 0: PBT UL94 V-0
      - 2: PBT UL94 HB
    - Central support
      - S: W/ central support
      - X: W/O centrsupport
    - Width(DIM D)
      - N: 7.62mm(06~28p)
      - W: 15.24mm(24~42p)
    - Contact plating
      - T1: Tin
    - Contact type
      - A: W/O kink
      - B: W/ kink
    - No.OF CONTACTS
      - 06 08 14 16 18 20
      - 24 28 32 40 42



Position	Dimension			
	A	B	C	D
06	7.62	5.08	10.16	7.62
08	10.16	7.62	10.16	7.62
14	17.78	15.24	10.16	7.62
16	20.32	17.78	10.16	7.62
18	22.86	20.32	10.16	7.62
20	25.40	22.86	10.16	7.62
24	30.48	27.94	10.16	7.62
24	30.48	27.94	17.78	15.24
28	35.56	33.02	10.16	7.62
28	35.56	33.02	17.78	15.24
32	40.64	38.10	17.78	15.24
40	50.80	48.26	17.78	15.24
42	53.34	51.00	17.78	15.24



② W/ Kink Figure

GENERAL TOLERANCE	ANGLE TOLERANCE	PROJECTION	TITLE	2.54mm IC SOCKET
X. ±0.60	X. ±5°	UNITS	mm	Stamping Type
.X ±0.38	.X ±3°	SHEET SIZE	A4	SERIES DS1009 SERIES
.XX ±0.25	.XX ±2°	 <b>晨翔电子有限公司</b> <b>CONNFLY ELECTRONIC CO., LTD</b>		
DRAWING TYPE	CUSTOMER			
SCALE	1:1 SHEET 10F1			
DRAWING NO.	C-DS1009-XXXXX-XXX-C			

## X-ON Electronics

Largest Supplier of Electrical and Electronic Components

*Click to view similar products for [IC & Component Sockets](#) category:*

*Click to view products by [Connfly](#) manufacturer:*

Other Similar products are found below :

[614-DG5](#) [670](#) [672](#) [673](#) [712-93-120-41-001000](#) [714-93-104-31-018000](#) [8-1437531-4](#) [8150-6P10](#) [835-43-014-10-001000](#) [851-41-006-10-001000](#) [851-43-008-20-001000](#) [851-43-014-20-001000](#) [851-93-006-20-001000](#) [851-93-010-20-001000](#) [853-43-020-10-001000](#) [86.010.0053.0](#) [116-43-308-41-007000](#) [121-13-318-41-001000](#) [121-13-320-41-001000](#) [121-13-308-41-001000](#) [123-43-314-41-801000](#) [123-43-420-41-001000](#) [122-13-316-41-001000](#) [123-13-624-41-001000](#) [123-43-306-41-001000](#) [12-3513-11](#) [123-91-320-41-001000](#) [126-43-310-41-002000](#) [AKSUN](#) [37V-T](#) [1437503-9](#) [1437504-1](#) [APA-640-G-P](#) [146-44-308-41-013000](#) [146-43-308-41-012000](#) [160-10-308-00-001000](#) [160-40-320-00-001000](#) [214-99-306-01-670800](#) [2-382761-4](#) [2-5331677-4](#) [2-640360-3](#) [2801-3-00-44-00-00-07-0](#) [940-44-052-17-400004](#) [299-83-314-11-001101](#) [1986000-2](#) [2103331641101000](#) [210-43-320-41-001000](#) [210-99-628-41-001000](#) [2-1437504-6](#) [2-1437515-5](#) [2-1437531-2](#)