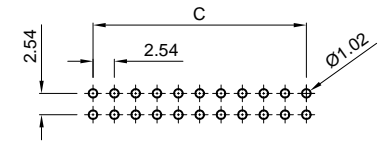
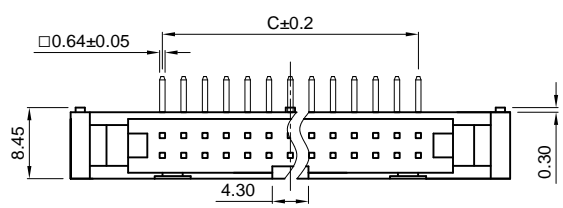


| | |
|------|---|
| Dept | |
| Qty | |
| DC | 1 |
| ED | 1 |
| IE | 1 |
| ISO | 1 |
| PD | 1 |
| R&D | 1 |
| SD | 1 |
| QA | 1 |
| QC | 1 |
| QE | 1 |

The information provided herein is from CONNPLY Electronic Co., Ltd. and is confidential. Any disclosure to a party other than the recipient is prohibited. The intellectual properties and its rights contained herein, including but not limited to, trademarks, patents, copyrights, trade secrets, and technical know-how, are owned exclusively by CONNPLY or its affiliates. Unauthorized use or reproduction of any part of this document is strictly prohibited. CONNPLY may enforce its intellectual property rights at its own discretion, failures or delays to exercise such rights does not constitute a waiver of such rights.



Recommend PCB layout
(Tolerance ±0.05)

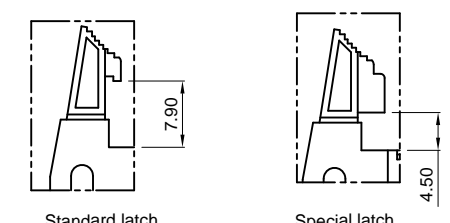
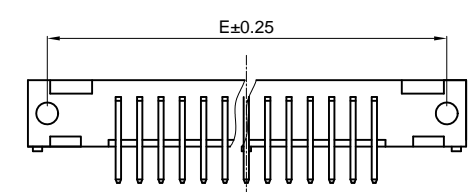
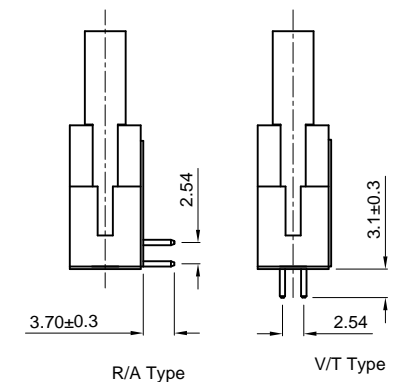
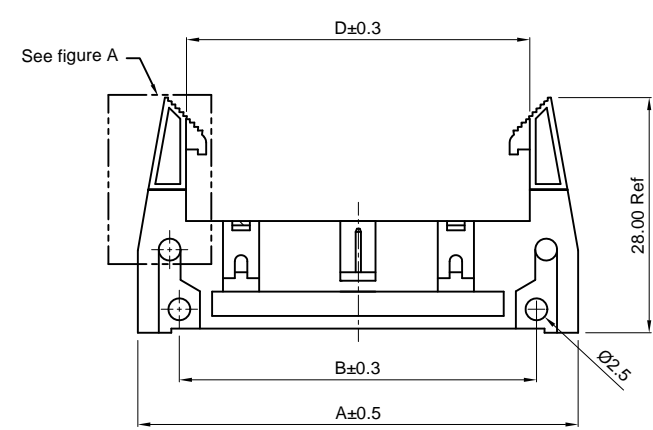


Figure A



(Series Image-Reference Only)

| REV. | DESCRIPTION | DRAWN | CHECKED | APPROVED |
|------|----------------|---------------|---------|---------------|
| A | NEW RELEASE | LJC 04/27/05' | | LJC 04/27/05' |
| B | ADD DIM | LL 09/21/06' | | LJC 09/21/06' |
| C | HOUSING CHANGE | YCH 04/09/08' | | LJC 04/09/08' |
| H | DRAWING UPDATE | JLZ 08/21/18' | | |

- NOTES:
- Electrical characteristics:
 - Contact resistance: 20mΩ Max. INITIAL.
 - Dielectric withstanding voltage: 500V AC(rms) for 1 minute.
 - Insulation resistance: 1000MΩ Min.
 - Environment characteristics:
 - Temperature: -40°C~+105°C.
 - Product number code:
DS1011- X X X X X X - X
 - Plating level
B: Level B 3A: Level 3A
 - Lock DIM.
7: 7.90mm(standard)
4: 4.50mm(special)
 - Housing color
B: Black
A: Gray
 - Contact plating
Si: Full Gold flash
 - Housing type
B: Big latch housing
 - Mounting type
S: Straight type
R: R/A type
 - No. of contacts
10 14 16 20 24 26 30
34 40 50 60 64

Available dimension table

| No. of Contacts | 10 | 14 | 16 | 20 | 24 | 26 | 30 | 34 | 40 | 50 | 60 | 64 |
|-----------------|-------|-------|-------|-------|-------|-------|-------|-------|-------|-------|-------|--------|
| A | 32.1 | 37.18 | 39.72 | 44.80 | 49.88 | 52.42 | 57.50 | 62.58 | 70.20 | 82.90 | 95.60 | 100.68 |
| B | 22.20 | 27.28 | 29.82 | 34.90 | 39.98 | 42.52 | 47.60 | 52.68 | 60.30 | 73.00 | 85.70 | 90.78 |
| C | 10.16 | 15.24 | 17.78 | 22.86 | 27.94 | 30.48 | 35.56 | 40.64 | 48.26 | 60.96 | 73.66 | 78.74 |
| D | 18.10 | 23.18 | 25.72 | 30.80 | 35.88 | 38.42 | 43.50 | 48.58 | 56.20 | 68.90 | 81.60 | 86.68 |
| E | 27.90 | 32.98 | 35.52 | 40.60 | 45.68 | 48.22 | 53.30 | 58.38 | 66.00 | 78.70 | 91.40 | 96.48 |

| | | | | | | | | |
|-------------------|-------|---------------------|--------|------------|----|---|--|--|
| GENERAL TOLERANCE | | ANGLE TOLERANCE | | PROJECTION | | TITLE | 2.54mm SHROUDED HEADER R/A & V/T TYPE | |
| X. | ±0.60 | X. | ±5° | UNITS | mm | SHEET SIZE | A4 | |
| .X | ±0.38 | .X | ±3° | | | SERIES | DS1011 SERIES | |
| .XX | ±0.25 | .XX | ±2° | | | 晨翔电子有限公司 CONNPLY CONNPLY ELECTRONIC CO. LTD | | |
| DRAWING TYPE | | CUSTOMER | | | | | | |
| SCALE | 1:1 | SHEET | 1 OF 1 | | | | | |
| DRAWING NO. | | C-DS1011-XXBXXX-X-H | | | | | | |

X-ON Electronics

Largest Supplier of Electrical and Electronic Components

Click to view similar products for [I/O Connectors](#) category:

Click to view products by [Connfly](#) manufacturer:

Other Similar products are found below :

[571763P](#) [59811-0000](#) [61-168618-12P](#) [D20419-211](#) [76871-1403](#) [PCR-E36PM](#) [PCS-XE26LKA](#) [PCS-XES68MS+](#) [G38A71314B](#) [DX40-50P\(55\)](#) [1571250010](#) [157-22500-3](#) [MS3471L14-19P L/C](#) [192991-0703](#) [91-569786-35H](#) [FCN-260C008-A/L0](#) [FCN-260C024-AL0](#) [FCN-261Z008](#) [2000314-1](#) [200331-1](#) [PCS-E28FS+](#) [PCS-XE26SLFD+](#) [PCS-XE26SLFDT+](#) [G730VID08BDC24](#) [HDMR-29-01-S-SM-TR](#) [HDR-E14MSG1+](#) [54182-0605](#) [UE86K842720321](#) [38113800006](#) [DP3AR020WQ1R200](#) [DRA-26PC-F0R](#) [Z4.102.0680.0](#) [500-1040](#) [500-1052](#) [ZP-4008-66L](#) [10-565995-597N](#) [10-584459-12P](#) [DX40-20P\(55\)](#) [5554841-1](#) [SM3100F14S-12P](#) [SM3106F14S-7S-LC](#) [SM3106R18-18S](#) [U90B3054061110](#) [U65-E04-4020](#) [557-262M2-06C](#) [PCS-96LFD+](#) [60-042222-02S](#) [10099439-003C-TRLF](#) [226-0348-000](#) [10137239-0021LF](#)