

| | | | |
|------------|---------------|------------|-------------------------|
| PROJECTION | | TITLE | BOX HEADER PITCH 2.00mm |
| UNITS | mm | SHEET SIZE | A4 |
| SERIES | DS1014 SERIES | | |

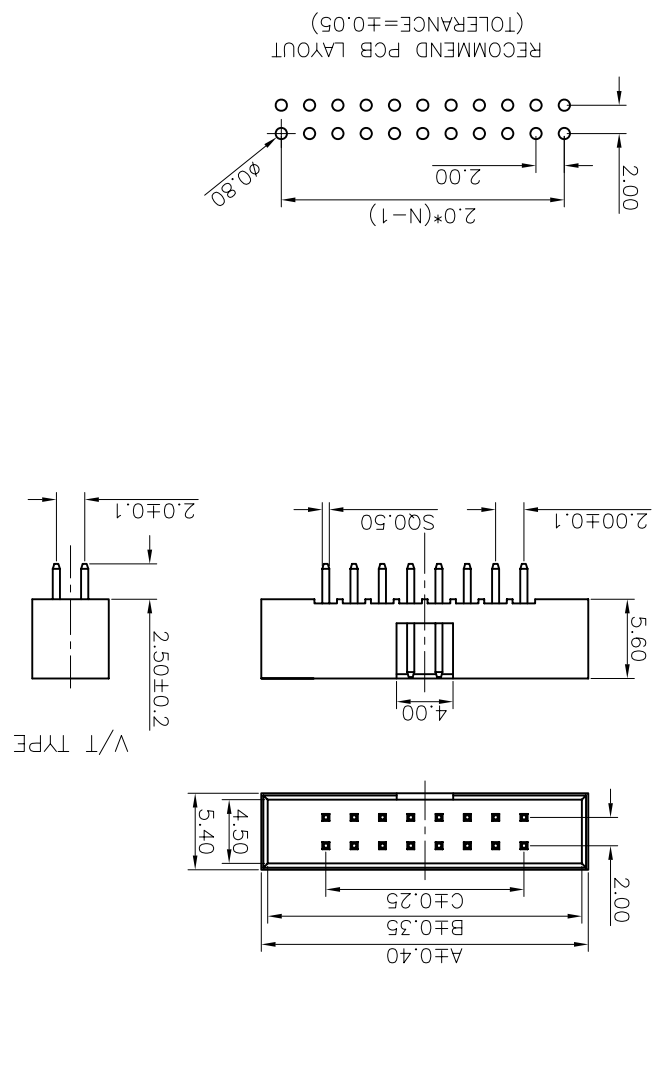
| | | | | | | |
|------|---|-------------|-------------|--------------|---------|----------|
| REV. | A | DESCRIPTION | NEW RELEASE | LJH 04/27/05 | CHECKED | APPROVED |
| REV. | | | | | | |
| REV. | | | | | | |
| REV. | | | | | | |

| | | | | | | |
|------|---|-------------|-------------|--------------|---------|----------|
| REV. | A | DESCRIPTION | NEW RELEASE | LJH 04/27/05 | CHECKED | APPROVED |
| REV. | | | | | | |
| REV. | | | | | | |
| REV. | | | | | | |

| | | | |
|-------------------|---------------|-------------|--------------|
| GENERAL TOLERANCE | X. ±0.60 | X. ±0.38 | .XX ±0.25 |
| ANGLE TOLERANCE | ±5. | ±3. | ±2. |
| DRAWING TYPE | CUSTOMER | | |
| SCALE | 1:1 | SHEET | 1 OF 1 |
| DRAWING NO. | C-DS1014-XXXX | | |

NOTES:

- MATERIAL
1.1 INSULATOR: THERMOPLASTIC (UL 94V-0).
1.2 CONTACT: COPPER ALLOY.
- SPECIFICATION
2.1 TEMPERATURE: -40°C ~ +105°C.
2.2 CONTACT RESISTANCE: 20mΩ max. (initial).
2.3 INSULATION RESISTANCE: 1000MΩ min.
2.4 DIELECTRIC WITHSTANDING VOLTAGE: AC 500V PER MINUTE.
- PART NUMBER: DS1014
4. PRODUCT NUMBER CODE:
DS1014-X X X X
HOUSING COLOR
B: BLACK
W: WHITE
L: BLUE
A: GRAY
CONTACT PLATING
F1: FULL GOLD FLASH
MOUNTING TYPE
S: V/T TYPE
R: R/A TYPE
E: Elevator TYPE
No. OF CONTACTS
08 10 12 14 16 20 26
30 34 40 50 60 64
SERIES No.
DS1014

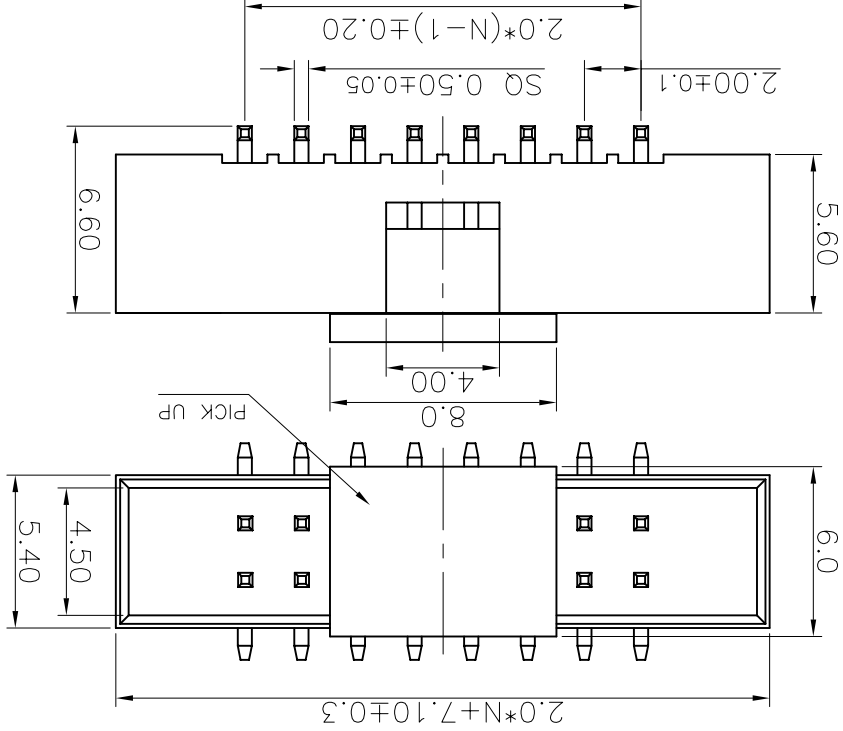
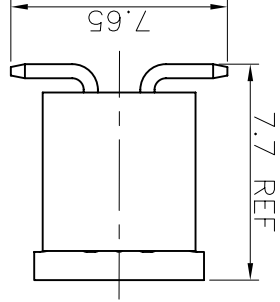


| REV. | DESCRIPTION | DRAWN | CHECKED | APPROVED |
|------|-------------|--------------|---------|----------|
| A | NEW RELEASE | YCH 09/11/23 | ~ | |
| | | | | |
| | | | | |

NOTES:

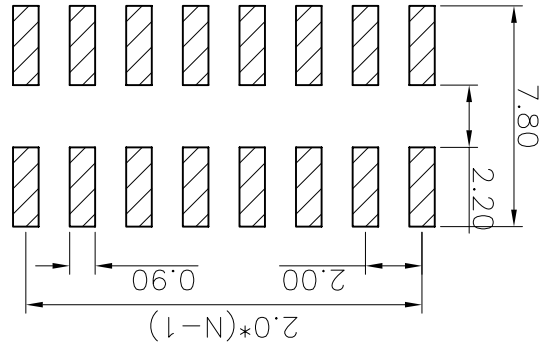
1. MATERIAL
1.1 INSULATOR: THERMOPLASTIC (UL 94V-0).
- 1.2 CONTACT: COPPER ALLOY.
2. SPECIFICATION
2.1 TEMPERATURE: $-40^{\circ}\text{C} \sim +105^{\circ}\text{C}$.
- 2.2 CONTACT RESISTANCE: $20\text{m}\Omega$ max. (initial).
- 2.3 INSULATION RESISTANCE: $1000\text{M}\Omega$ min.
- 2.4 DIELECTRIC WITHSTANDING VOLTAGE: AC 500V PER MINUTE.
3. PART NUMBER: DS1014
4. PRODUCT NUMBER CODE: DS1014-X X X X X X X X X X

PACKAGING TYPE
T: TRAY
R: TAPE ON REEL
B: TUBE
PICK UP SUPPORT
S: W/ PICK UP
X: W/O PICK UP
HOUSING COLOR
H: BLACK
B: BLACK
W: WHITE
L: BLUE
A: GRAY
CONTACT PLATING
F1: FULL GOLD FLASH
MOUNTING TYPE
M: SMT TYPE
NO. OF CONTACTS
08 10 12 14 16 20 26
30 34 40 50 60 64
SERIES No.
DS1014



N: NUMBER OF CONTACTS/2

RECOMMEND PCB LAYOUT
(TOLERANCE=±0.05)



GENERAL TOLERANCE ANGLE TOLERANCE

X. ±0.60

.X ±0.38

.XX ±0.25

X. ±5.

.X ±3.

.XX ±2.

DRAWING TYPE CUSTOMER

SCALE 1:1 SHEET 1 OF 1

DRAWING NO. C-DS1014-XMXXXX

PROJECTION TITLE BOX HEADER PITCH 2.00mm SMT TYPE

UNITS mm

SHEET SIZE A4

SERIES DS1014 SERIES

CONNLY CONNLY ELECTRONIC CO., LTD.

8

7

6

5

4

3

2

1

H

H

G

G

F

F

E

E

D

D

C

C

B

B

A

A

8

7

6

5

4

3

2

1

X-ON Electronics

Largest Supplier of Electrical and Electronic Components

Click to view similar products for [Headers & Wire Housings](#) category:

Click to view products by [Connfly](#) manufacturer:

Other Similar products are found below :

[95000-104TRLF](#) [10135584-644402LF](#) [DF62W-EP2022PCA](#) [95000-106TRLF](#) [DF62W-2022SCA](#) [DF62W-EP2022PC](#) [2203348](#) [DF62W-2022SC](#) [1084018](#) [1029039](#) [1084017](#) [802-10-012-10-002000](#) [1112640](#) [1112639](#) [891-007-9SS-BST1T](#) [000-34000](#) [0008550134](#) [0009482033](#) [0009507031](#) [57102-F02-18ULF](#) [57102-S06-03LF](#) [57202-S52-04LF](#) [PCN6-15S-2.5E](#) [0039019024](#) [58102-G61-06LF](#) [582553-1](#) [0009485154](#) [0009508121](#) [0022285053](#) [0050291907](#) [018731A](#) [LY20-4P-DT1-P1E-BR](#) [02.125.8002.8](#) [60101931](#) [60598-1 \(Cut Strip\)](#) [M1625-3R/100](#) [61062-3](#) [61082-181009](#) [CSU011177004](#) [636-1427](#) [638009-1](#) [641938-9](#) [641991-4](#) [644168-1](#) [644827-2](#) [647662-1](#) [65039-019ELF](#) [65692-001LF](#) [65781-018](#) [65781-047](#)