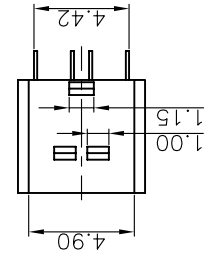
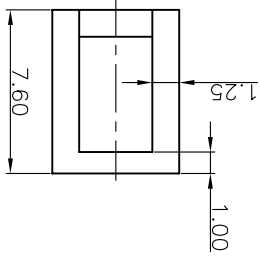
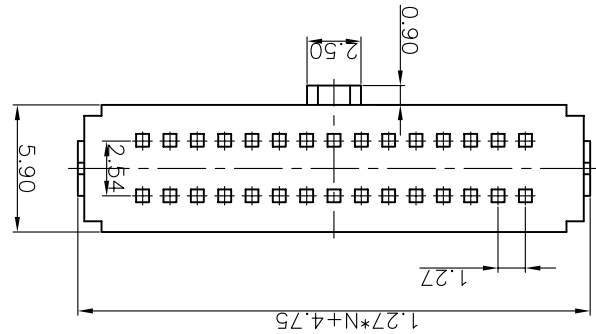
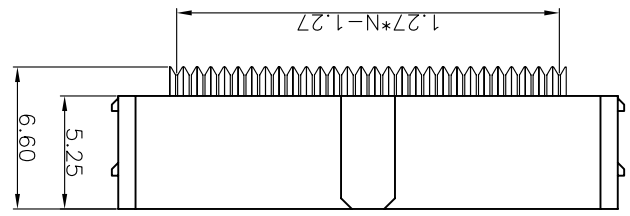
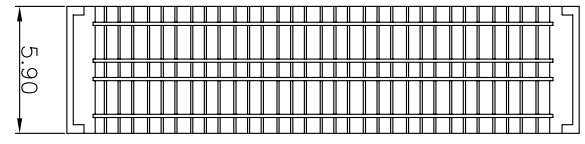
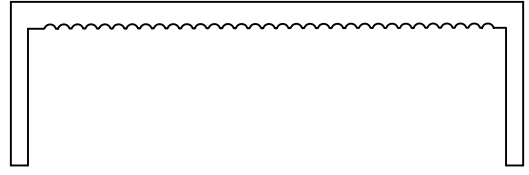


DRAWING NO. C-DS1016-01-XXXX	
SCALE 1:1	SHEET 1 OF 1
DRAWING TYPE CUSTOMER	
GENERAL TOLERANCE X. ±0.60	ANGLE TOLERANCE X. ±5.
.X ±0.38	.X ±3.
.XX ±0.25	.XX ±2.

PROJECTION	TITLE	IDC SOCKET PITCH 1.27*2.54mm
UNITS	mm	
SHEET SIZE	A4	SERIES DS1016-01 SERIES



- NOTES:
- ELECTRICAL CHARACTERISTICS:
    - 1.1 CONTACT RESISTANCE: 30mΩ Max.
    - 1.2 DIELECTRIC WITHSTANDING VOLTAGE: 500V AC(rms) FOR 1 MINUTE.
    - 1.3 INSULATION RESISTANCE: 100MΩ Min.
  - ENVIRONMENT CHARACTERISTICS:
    - 2.1 TEMPERATURE RANGE: -40°C~+105°C.
  - PART NUMBER: DS1016-01
  - PRODUCT NUMBER CODE: DS1016-01-X X X X X X X X X X
- HOUSING COLOR: A:GRAY B:BLACK L:BLUE
- CONTACT PLATING: 2:NICKEL + GOLD FLASH 6:FULL TIN 8:FULL GOLD FLASH
- POLARIZATION SUPPORT: A:W/O B:W/O
- No. OF CONTACTS: 10 20 26 30 34 40 50 60 68 70 80 90 100

REV. A	DESCRIPTION	DRAWN	YCH 09/06/08	CHECKED	APPROVED

## X-ON Electronics

Largest Supplier of Electrical and Electronic Components

*Click to view similar products for [Headers & Wire Housings](#) category:*

*Click to view products by [Connfly](#) manufacturer:*

Other Similar products are found below :

[95000-104TRLF](#) [10135584-644402LF](#) [DF62W-EP2022PCA](#) [95000-106TRLF](#) [DF62W-2022SCA](#) [DF62W-EP2022PC](#) [2203348](#) [DF62W-2022SC](#) [1084018](#) [1029039](#) [1084017](#) [802-10-012-10-002000](#) [1112640](#) [1112639](#) [891-007-9SS-BST1T](#) [000-34000](#) [0008550134](#) [0009482033](#) [0009507031](#) [57102-F02-18ULF](#) [57102-S06-03LF](#) [57202-S52-04LF](#) [PCN6-15S-2.5E](#) [0039019024](#) [58102-G61-06LF](#) [582553-1](#) [0009485154](#) [0009508121](#) [0022285053](#) [0050291907](#) [018731A](#) [LY20-4P-DT1-P1E-BR](#) [02.125.8002.8](#) [60101931](#) [60598-1 \(Cut Strip\)](#) [M1625-3R/100](#) [61062-3](#) [61082-181009](#) [CSU011177004](#) [636-1427](#) [638009-1](#) [641938-9](#) [641991-4](#) [644168-1](#) [644827-2](#) [647662-1](#) [65039-019ELF](#) [65692-001LF](#) [65781-018](#) [65781-047](#)