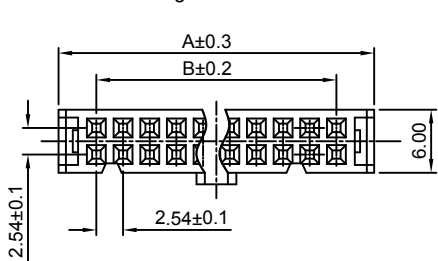


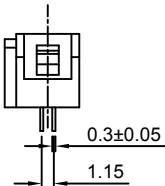
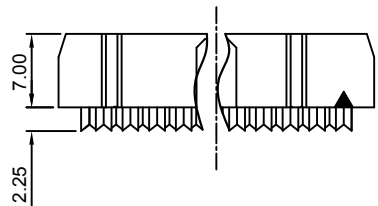
| | |
|------|---|
| Dept | |
| Qty | |
| DC | 1 |
| ED | 1 |
| IE | 1 |
| ISO | 1 |
| PD | 1 |
| R&D | 1 |
| SD | 1 |
| QA | 1 |
| QC | 1 |
| QE | 1 |

The information provided herein is from CONNELY Electronic Co., Ltd. and is confidential. Any disclosure to a party other than the recipient is prohibited. The intellectual properties and its rights contained herein, including but not limited to, trademarks, patents, copyrights, trade secrets, and technical know-how, are owned exclusively by CONNELY or its affiliates. Unauthorized use or reproduction of any part of this document is strictly prohibited. CONNELY may enforce its intellectual property rights at its own discretion, failures or delays to exercise such rights does not constitute a waiver of such rights.

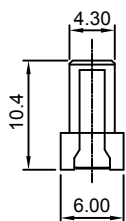
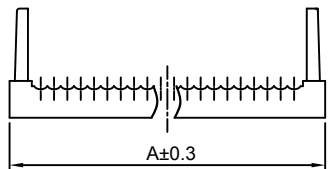
Housing with contact



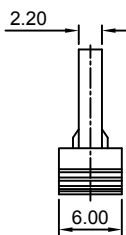
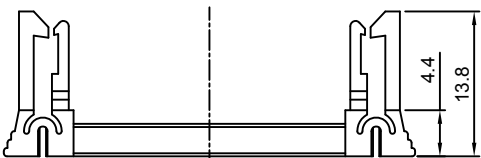
Contact Scale:2/1



Upper cover



Top cover



| Position | Dimension | |
|----------|-----------|-------|
| | A | B |
| 08 | 14.82 | 7.62 |
| 10 | 17.36 | 10.16 |
| 12 | 19.90 | 12.70 |
| 14 | 22.44 | 15.24 |
| 16 | 24.98 | 17.78 |
| 20 | 30.06 | 22.86 |
| 24 | 35.14 | 27.94 |
| 26 | 37.68 | 30.48 |
| 30 | 42.76 | 35.56 |
| 34 | 47.84 | 40.64 |
| 40 | 55.46 | 48.26 |
| 44 | 60.54 | 53.34 |
| 50 | 68.16 | 60.96 |
| 60 | 80.86 | 73.66 |
| 64 | 85.94 | 78.74 |



(Series Image-Reference Only)

| REV. | DESCRIPTION | DRAWN | CHECKED | APPROVED |
|------|----------------|---------------|---------|---------------|
| A | NEW RELEASE | LJH 09/20/05' | | LJC 09/20/05' |
| B | DRAWING UPDATE | JLZ 08/24/18' | | |
| C | DRAWING UPDATE | JLZ 03/31/22' | | |
| D | DRAWING UPDATE | JLZ 06/07/23' | | |

NOTES:

- Electrical characteristics:
 - Contact resistance: 20mΩ Max. Initial.
 - Dielectric withstanding voltage: 500V AC(rms) for 1 minute.
 - Insulation resistance: 1000MΩ Min.
- Environment characteristics:
 - Temperature: -40°C~+105°C.
- Product number code:

DS1016-02 - X X X X X X - X

- Packing type(Tray)
 - 2:One TRD+One TRU
 - N/A Code:Many TRD+One TRU
- Housing color
 - B:Black
- Terminal material
 - B:Brass
- Contact plating
 - 8:Full gold flash
 - 2:Gold flash + Nickel
 - N:Full nickel
- Polarization
 - A:W/
- Strain relief
 - M:W/
- No. of contacts
 - 08 10 14 16 20
 - 24 26 30 34 40
 - 44 50 60 64

| | | | | | | | | | | | | |
|-------------------|-------|------------------------|-----|--|----|--------|---------------------------|--|-------|--|--------|--|
| GENERAL TOLERANCE | | ANGLE TOLERANCE | | PROJECTION | | TITLE | I.D.C SOCKET PITCH 2.54mm | | | | | |
| X. | ±0.60 | X. | ±5° | UNITS | mm | SERIES | DS1016-02 SERIES | | | | | |
| .X | ±0.38 | .X | ±3° | SHEET SIZE | A4 | | | | | | | |
| .XX | ±0.25 | .XX | ±2° | | | | | | | | | |
| DRAWING TYPE | | CUSTOMER | | 晨翔电子有限公司 CONNELY CONNELY ELECTRONIC CO. LTD | | | | | | | | |
| SCALE | | 1:1 | | | | | | | SHEET | | 1 OF 1 | |
| DRAWING NO. | | C-DS1016-02-XXXXXX-X-D | | | | | | | | | | |

X-ON Electronics

Largest Supplier of Electrical and Electronic Components

Click to view similar products for [I/O Connectors](#) category:

Click to view products by [Connfly](#) manufacturer:

Other Similar products are found below :

[571763P](#) [59811-0000](#) [61-168618-12P](#) [D20419-211](#) [D38999/20FJ24PA L/C](#) [76871-1403](#) [PCR-E36PM](#) [PCS-XE26LKA](#) [PCS-XES68MS+](#)
[G38A71314B](#) [DX40-50P\(55\)](#) [1571250010](#) [157-22500-3](#) [MS3471L14-19P L/C](#) [192991-0703](#) [FCN-260C008-A/L0](#) [FCN-260C024-AL0](#) [FCN-](#)
[261Z008](#) [2000314-1](#) [200331-1](#) [PCS-E28FS+](#) [PCS-XE26SLFD+](#) [PCS-XE26SLFDT+](#) [G730VID08BDC24](#) [HDR-E14MSG1+](#) [54182-0605](#)
[UE86K842720321](#) [38113800006](#) [DP3AR020WQ1R200](#) [DRA-26PC-F0R](#) [Z4.102.0680.0](#) [500-1040](#) [500-1052](#) [ZP-4008-66L](#) [DX40-20P\(55\)](#)
[5554841-1](#) [SM3100F14S-12P](#) [U90B3054061110](#) [U65-E04-4020](#) [557-262M2-06C](#) [60-042222-02S](#) [10099439-003C-TRLF](#) [226-0348-000](#)
[10137239-0011LF](#) [70.060.1028.0](#) [109029-ZZ](#) [HDR-E26MG1+](#) [SO-0715-02-01-02](#) [GT1-DA04CST](#) [231-303](#)