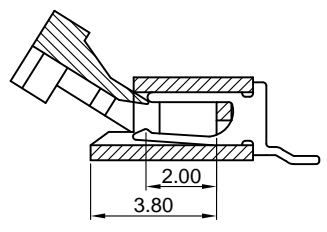
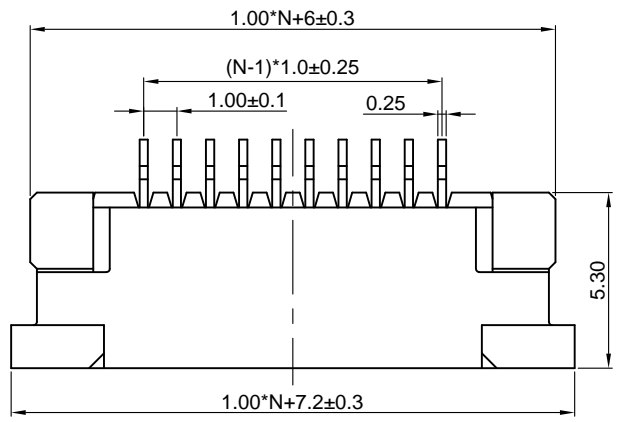
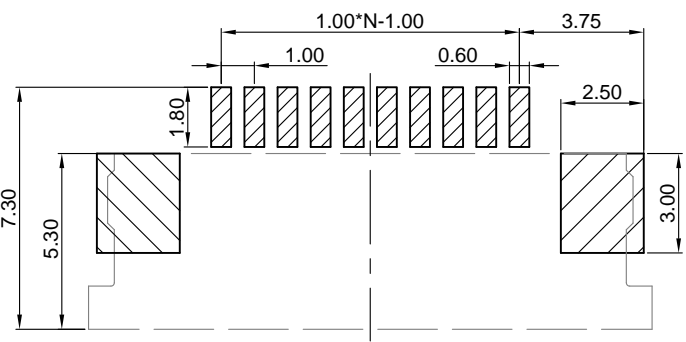
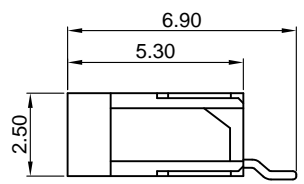
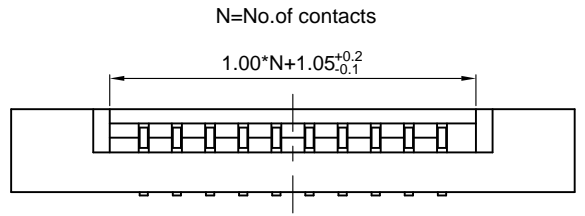


Dept	
Qty	
DC	1
ED	1
IE	1
ISO	1
PD	1
R&D	1
SD	1
QA	1
QC	1
QE	1

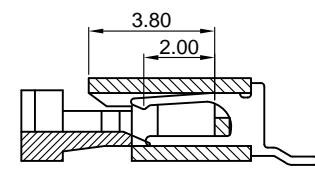
The information provided herein is from CONNPLY Electronic Co., Ltd. and is confidential. Any disclosure to a party other than the recipient is prohibited. The intellectual properties and its rights contained herein, including but not limited to, trademarks, patents, copyrights, trade secrets, and technical know-how, are owned exclusively by CONNPLY or its affiliates. Unauthorized use or reproduction of any part of this document is strictly prohibited. CONNPLY may enforce its intellectual property rights at its own discretion, failures or delays to exercise such rights does not constitute a waiver of such rights.



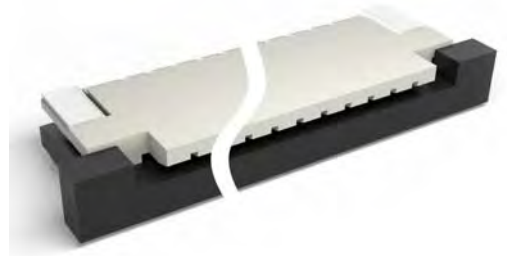
Lower Contact Side



Recommend PCB layout  
(Tolerance:±0.05)



Upper Contact Side



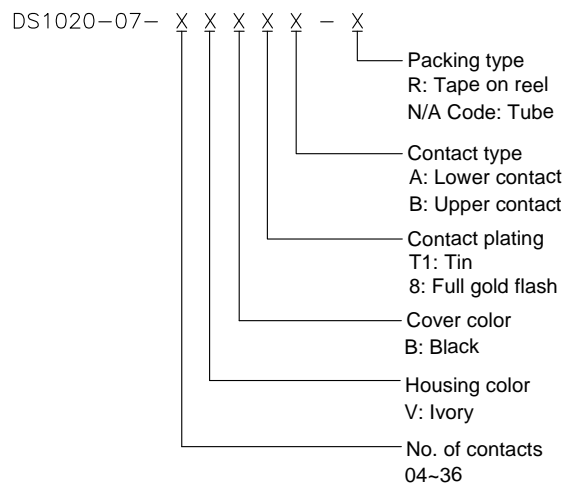
(Series Image-Reference Only)

REV.	DESCRIPTION	DRAWN	CHECKED	APPROVED
A	NEW RELEASE	YCH 09/04/08'		LJC 09/04/08'
D	DRAWING UPDATE	JLZ 01/10/16'		

NOTES:

- Materials
  - 1.1 Insulator:thermoplastic(UL 94V-0).
  - 1.2 Contact:Copper alloy.
- Specification
  - 2.1 Temperature:-20~+85°C.
  - 2.2 Contact resistance:30mΩ max.
  - 2.3 Insulation resistance:100MΩ min.
  - 2.4 Dielectric withstanding voltage:AC 100V per minute.

3. Product number code:



GENERAL TOLERANCE	ANGLE TOLERANCE	PROJECTION		TITLE	1.00mm FPC Connector
X. ±0.60	X. ±5°	UNITS	mm		ZIF R/A SMT Type
.X ±0.38	.X ±3°	SHEET SIZE	A4	SERIES	DS1020-07 SERIES
.XX ±0.25	.XX ±2°	<b>晨翔电子有限公司</b> <b>CONNPLY ELECTRONIC CO. LTD</b>			
DRAWING TYPE	CUSTOMER				
SCALE	1:1				
DRAWING NO.	C-DS1020-07-XXXXX-X-D				

## X-ON Electronics

Largest Supplier of Electrical and Electronic Components

*Click to view similar products for [FFC & FPC Connectors](#) category:*

*Click to view products by [Connfly](#) manufacturer:*

Other Similar products are found below :

[FPH-1422G](#) [FPH-1602G](#) [K-FC20](#) [FPH-2022G](#) [52610-1075](#) [52610-1275](#) [52610-1934](#) [501864-3091-TR225](#) [086222026001800](#) [52610-0675](#)  
[62684-36210E9ALF](#) [52746-1671-TR250](#) [10051922-2810EHLF](#) [6-520415-9](#) [SFV6R-1STE9HLF](#) [XF3M-2915-1B-R100](#) [1658549-1](#)  
[AYF530665TA](#) [AYF534065TA](#) [AYF351525](#) [086212040340800+](#) [67000-014LF](#) [67000-004LF](#) [006207341915000+](#) [207356-1](#) [67000-003LF](#)  
[67000-011LF](#) [67000-016LF](#) [HFW14R-2STE9LF](#) [SFV32R-2STBE9HLF](#) [SFW12R-5STE9LF](#) [SFW18R-1STAE9LF](#) [SFW4R-5STE9LF](#)  
[52807-0430](#) [046283021002868+](#) [67000-006LF](#) [502250-8027](#) [104267-9617](#) [66987-011LF](#) [AYF362535](#) [HFW8S-2STAE1HLF](#) [67000-008LF](#)  
[67000-012LF](#) [HFW15S-2STAE1HLF](#) [HFW22R-2STE1H1LF](#) [0781271110](#) [5019511030](#) [FH28K-40S-0.5SH](#) [5039084120](#) [503908-5120](#)