

Dept	
Qty	
DC	1
ED	1
IE	1
ISO	1
PD	1
R&D	1
SD	1
QA	1
QC	1
QE	1

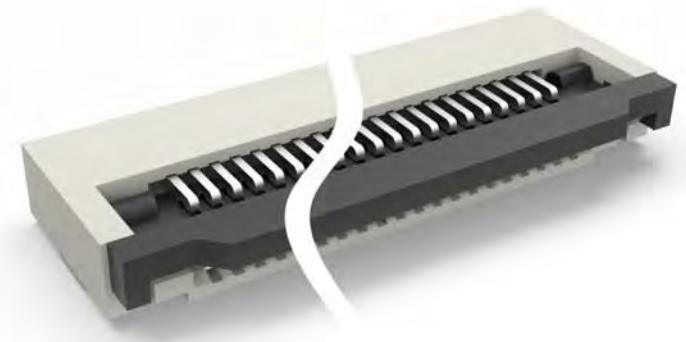
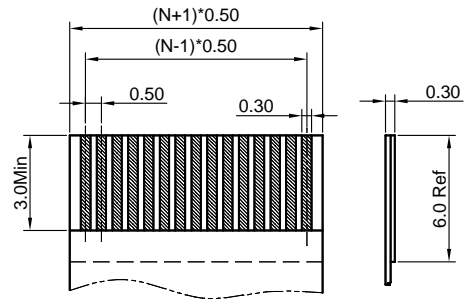
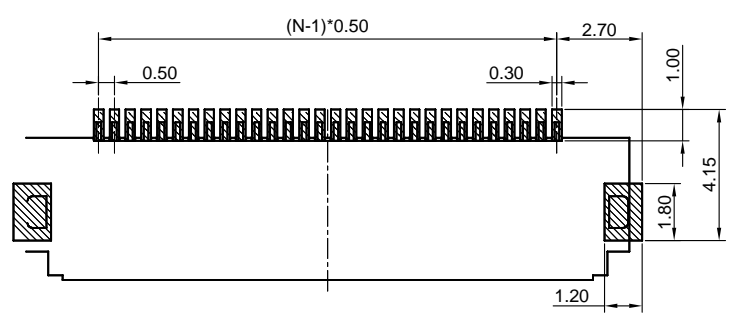
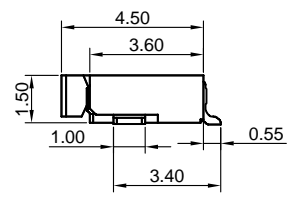
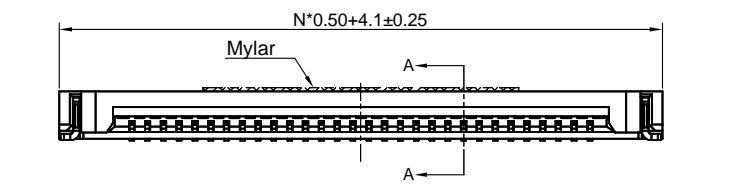
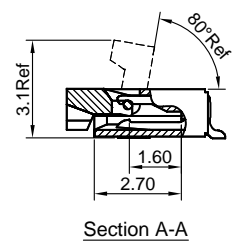
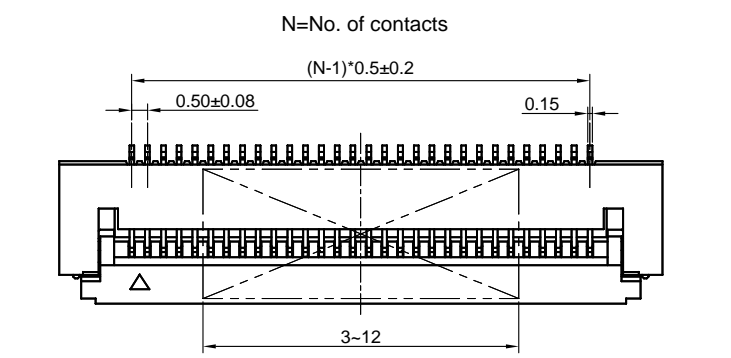
The information provided herein is from CONNELY Electronic Co., Ltd. and is confidential. Any disclosure to a party other than the recipient is prohibited. The intellectual properties and its rights contained herein, including but not limited to, trademarks, patents, copyrights, trade secrets, and technical know-how, are owned exclusively by CONNELY or its affiliates. Unauthorized use or reproduction of any part of this drawing without the prior written consent of CONNELY may constitute a violation of intellectual property rights. CONNELY may enforce its intellectual property rights at its own discretion, failures or delays in exercising such rights does not constitute a waiver of such rights.

REV.	DESCRIPTION	DRAWN	CHECKED	APPROVED
A	NEW RELEASE	YCH 03/25/09'		LJC 03/25/09'
C	DRAWING UPDATE	JLZ 05/05/18'		

- NOTES:
- Materials
    - 1.1 Insulator: Thermoplastic (UL 94V-0).
    - 1.2 Contact: Copper alloy.
  - Specification
    - 2.1 Temperature: -40~+105°C.
    - 2.2 Contact resistance: 30mΩ max.
    - 2.3 Insulation resistance: 100MΩ min.
    - 2.4 Dielectric withstanding voltage: AC 100V per minute.

3. Product number code:  
 DS1020-12- X X X X X X X

- Packing type
- R: Tape on reel
- B: Tube
- Mylar support
- X: W/O Mylar
- S: W/ Mylar
- Contact type
- A: Lower contact
- Contact plating
- T1: Full tin
- 8: Full gold flash
- Cover color
- B: Black
- Housing color
- V: Ivory
- No. of contacts
- 04-60



(Series Image-Reference Only)

GENERAL TOLERANCE		ANGLE TOLERANCE	
X.	±0.60	X.	±5°
.X	±0.38	.X	±3°
.XX	±0.25	.XX	±2°
DRAWING TYPE	CUSTOMER		
SCALE	1:1	SHEET	1 OF 1
DRAWING NO.	C-DS1020-12-XXXXXX-C		

PROJECTION		TITLE	0.5mm FPC Lower Contact ZIF Horizontal SMT Type
UNITS	mm	SERIES	DS1020-12 SERIES

晨翔电子有限公司  
CONNFLY ELECTRONIC CO. LTD

## X-ON Electronics

Largest Supplier of Electrical and Electronic Components

*Click to view similar products for [FFC & FPC Connectors](#) category:*

*Click to view products by [Connfly](#) manufacturer:*

Other Similar products are found below :

[FPH-1422G](#) [FPH-1602G](#) [K-FC20](#) [FPH-2022G](#) [52610-1075](#) [52610-1275](#) [52610-1934](#) [501864-3091-TR225](#) [086222026001800](#) [52610-0675](#)  
[62684-36210E9ALF](#) [52746-1671-TR250](#) [10051922-2810EHLF](#) [6-520415-9](#) [SFV6R-1STE9HLF](#) [XF3M-2915-1B-R100](#) [1658549-1](#)  
[AYF534065TA](#) [AYF351525](#) [086212040340800+](#) [67000-014LF](#) [67000-004LF](#) [006207341915000+](#) [207356-1](#) [67000-003LF](#) [67000-011LF](#)  
[67000-016LF](#) [HFW14R-2STE9LF](#) [SFV32R-2STBE9HLF](#) [SFW12R-5STE9LF](#) [SFW18R-1STAE9LF](#) [SFW4R-5STE9LF](#) [52807-0430](#)  
[046283021002868+](#) [67000-006LF](#) [502250-8027](#) [104267-9617](#) [66987-011LF](#) [AYF362535](#) [HFW8S-2STAE1HLF](#) [67000-008LF](#) [67000-012LF](#)  
[HFW15S-2STAE1HLF](#) [HFW22R-2STE1H1LF](#) [0781271110](#) [5019511030](#) [FH28K-40S-0.5SH](#) [5039084120](#) [503908-5120](#) [FFC05007-](#)  
[12SSA224W5M](#)