

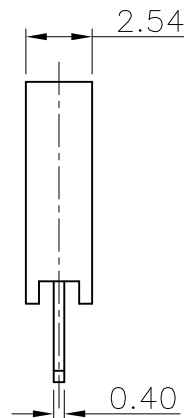
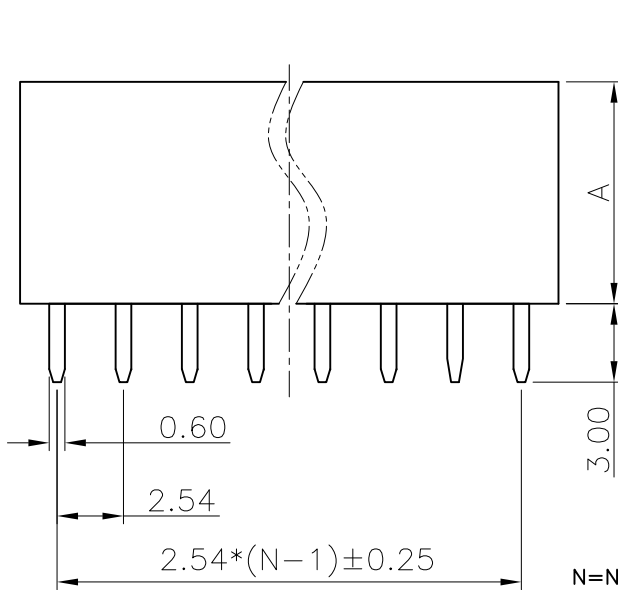
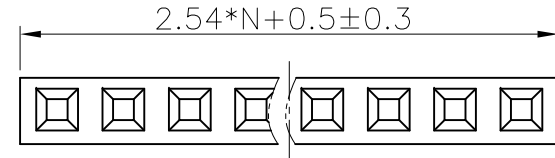
REV.	DESCRIPTION	DRAWN	CHECKED	APPROVED
A	NEW RELEASE	YCH 10/22/09'	~	LJC 10/22/09'
B	Drawing correction	JLZ 02/10/15'	~	

NOTES:

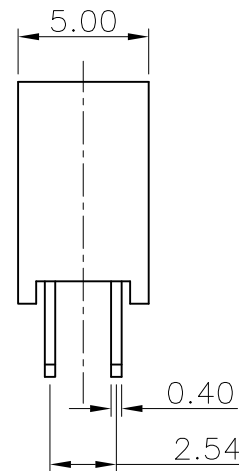
- ELECTRICAL CHARACTERISTICS:
  - CONTACT RESISTANCE: 20mΩ Max. INITIAL.
  - DIELECTRIC WITHSTANDING VOLTAGE: 500V AC(rms) FOR 1 MINUTE.
  - INSULATION RESISTANCE: 1000MΩ Min.
- MECHANICAL CHARACTERISTICS:
  - CONTACT RETENTION FORCE: 500gf Min.
- ENVIRONMENT CHARACTERISTICS:
  - TEMPERATURE RANGE: -40°C ~ +105°C.
- PRODUCT NUMBER CODE:

DS1023- X X X X

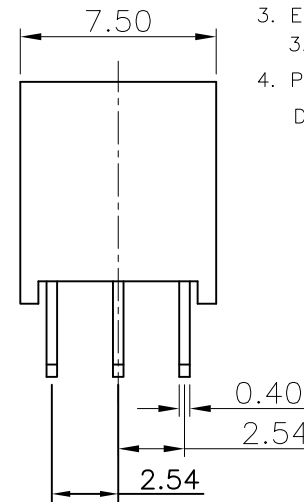
- PROFILE HEIGHT(DIM A)
  - 1: 8.5mm
  - 2: 5.0mm
- CONTACT PLATING
  - F1: FULL GOLD FLASH
  - 2: NICKEL + GOLD FLASH
- MOUNTING TYPE
  - S: Straight TYPE
- No.OF CONTACTS
  - 1\*1-1\*40
  - 2\*2-2\*40
  - 3\*3-3\*40



SINGLE ROW  
N=No. OF CONTACTS



DUAL ROWS  
N=No. OF CONTACTS/2



DUAL ROWS  
N=No. OF CONTACTS/3

GENERAL TOLERANCE		ANGLE TOLERANCE		PROJECTION		TITLE	FEMALT HEADER PITCH
X.	±0.60	X.	±5°	UNITS	mm	2.54mm V/T SINGLE/DUAL ROWS TYPE	
.X	±0.38	.X	±3°	SHEET SIZE	A4	SERIES	DS1023 SERIES
.XX	±0.25	.XX	±2°	<b>晨翔电子有限公司</b> <b>CONNFLY CONNFLY ELECTRONIC CO. LTD</b>			
DRAWING TYPE		CUSTOMER					
SCALE	1:1	SHEET	1 OF 1				
DRAWING NO.		C-DS1023-XXX1-B					

## X-ON Electronics

Largest Supplier of Electrical and Electronic Components

*Click to view similar products for [Headers & Wire Housings](#) category:*

*Click to view products by [Connfly](#) manufacturer:*

Other Similar products are found below :

[57102-F02-18ULF](#) [58102-G61-06LF](#) [0009485154](#) [009176003701906](#) [0050291907](#) [02.125.8002.8](#) [609-3404](#) [61062-3](#) [622-0430](#) [622-3653LF](#)  
[63453-116](#) [636-1030](#) [636-1427](#) [636-3427](#) [636-4007](#) [641938-9](#) [644827-2](#) [65495-038](#) [65692-001LF](#) [65781-018](#) [65781-047](#) [65817-010LF](#)  
[65817-015LF](#) [66207-023LF](#) [67016-026LF](#) [67095-007LF](#) [68631-112](#) [68645-018](#) [68648-049](#) [699319-000](#) [70.362.1628.0](#) [70-4210](#) [70-4226B](#)  
[70-4853B](#) [707-5020](#) [707-5028](#) [71.350.2428.0](#) [71961-016LF](#) [733-134](#) [754199-000](#) [760-3052](#) [787-8014-00](#) [FCN-367T-T012/H](#) [80.063.4001.1](#)  
[800-90-001-10-001000](#) [800-90-010-10-002000](#) [801-43-002-10-013000](#) [801-43-006-10-002000](#) [803-41-018-10-001000](#) [803-43-014-20-001000](#)