

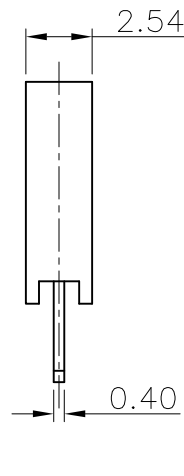
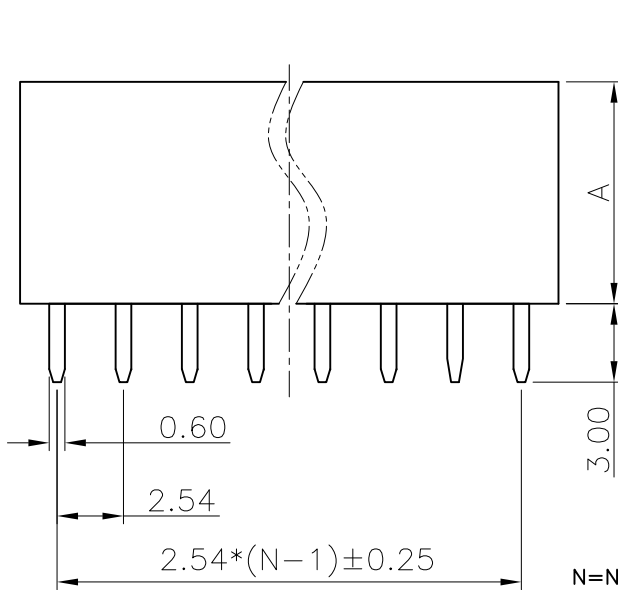
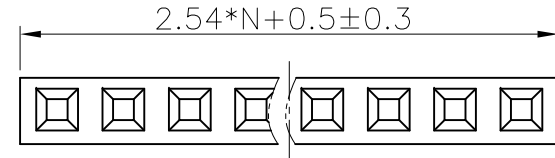
| REV. | DESCRIPTION | DRAWN | CHECKED | APPROVED |
|------|--------------------|---------------|---------|---------------|
| A | NEW RELEASE | YCH 10/22/09' | ~ | LJC 10/22/09' |
| B | Drawing correction | JLZ 02/10/15' | ~ | |
| | | | | |

NOTES:

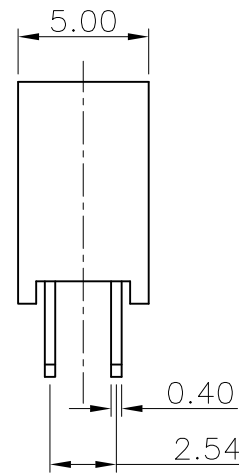
- ELECTRICAL CHARACTERISTICS:
 - CONTACT RESISTANCE: 20mΩ Max. INITIAL.
 - DIELECTRIC WITHSTANDING VOLTAGE: 500V AC(rms) FOR 1 MINUTE.
 - INSULATION RESISTANCE: 1000MΩ Min.
- MECHANICAL CHARACTERISTICS:
 - CONTACT RETENTION FORCE: 500gf Min.
- ENVIRONMENT CHARACTERISTICS:
 - TEMPERATURE RANGE: -40°C ~ +105°C.
- PRODUCT NUMBER CODE:

DS1023- X X X X

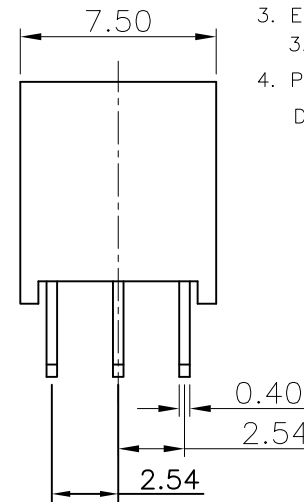
- PROFILE HEIGHT(DIM A)
 - 1: 8.5mm
 - 2: 5.0mm
- CONTACT PLATING
 - F1: FULL GOLD FLASH
 - 2: NICKEL + GOLD FLASH
- MOUNTING TYPE
 - S: Straight TYPE
- No.OF CONTACTS
 - 1*1-1*40
 - 2*2-2*40
 - 3*3-3*40



SINGLE ROW
N=No. OF CONTACTS



DUAL ROWS
N=No. OF CONTACTS/2



DUAL ROWS
N=No. OF CONTACTS/3

| | | | | | | | |
|-------------------|-------|-----------------|--------|--------------------------------------------------------------|----|----------------------------------|---------------------|
| GENERAL TOLERANCE | | ANGLE TOLERANCE | | PROJECTION | | TITLE | FEMALT HEADER PITCH |
| X. | ±0.60 | X. | ±5° | UNITS | mm | 2.54mm V/T SINGLE/DUAL ROWS TYPE | |
| .X | ±0.38 | .X | ±3° | SHEET SIZE | A4 | SERIES | DS1023 SERIES |
| .XX | ±0.25 | .XX | ±2° | 晨翔电子有限公司 CONNFLY CONNFLY ELECTRONIC CO. LTD | | | |
| DRAWING TYPE | | CUSTOMER | | | | | |
| SCALE | 1:1 | SHEET | 1 OF 1 | | | | |
| DRAWING NO. | | C-DS1023-XXX1-B | | | | | |

X-ON Electronics

Largest Supplier of Electrical and Electronic Components

Click to view similar products for [Headers & Wire Housings](#) category:

Click to view products by [Connfly](#) manufacturer:

Other Similar products are found below :

[57102-F02-18ULF](#) [58102-G61-06LF](#) [0009485154](#) [009176003701906](#) [0050291907](#) [02.125.8002.8](#) [609-3404](#) [61062-3](#) [622-0430](#) [622-3653LF](#)
[63453-116](#) [636-1030](#) [636-1427](#) [636-3427](#) [636-4007](#) [641938-9](#) [644827-2](#) [65495-038](#) [65692-001LF](#) [65781-018](#) [65781-047](#) [65817-010LF](#)
[65817-015LF](#) [66207-023LF](#) [67016-026LF](#) [67095-007LF](#) [68631-112](#) [68645-018](#) [68648-049](#) [699319-000](#) [70.362.1628.0](#) [70-4210](#) [70-4226B](#)
[70-4853B](#) [707-5020](#) [707-5028](#) [71.350.2428.0](#) [71961-016LF](#) [733-134](#) [754199-000](#) [760-3052](#) [787-8014-00](#) [FCN-367T-T012/H](#) [80.063.4001.1](#)
[800-90-001-10-001000](#) [800-90-010-10-002000](#) [801-43-002-10-013000](#) [801-43-006-10-002000](#) [803-41-018-10-001000](#) [803-43-014-20-](#)
[001000](#)