

REV.	DESCRIPTION	DRAWN	CHECKED	APPROVED
A	NEW RELEASE	LJH 04/27/05'	~~~~~	LJH 04/22/06'
B	ADD SCREW TYPE	DMJ 06/27/07'	~~~~~	LJC 06/27/07'
C	整理图面	YCH 05/21/08'	~~~~~	LJC 05/21/08'
F	ADD Pos TYPE	JLZ 03/29/16'	~~~~~	

NOTES:

1. ELECTRICAL CHARACTERISTICS:

- 1.1 CONTACT RESISTANCE: 20mΩ Max. INITIAL.
- 1.2 DIELECTRIC WITHSTANDING VOLTAGE: 500V AC(rms) FOR 1 MINUTE.
- 1.3 INSULATION RESISTANCE: 1000MΩ Min.

2. ENVIRONMENT CHARACTERISTICS:

- TEMPERATURE RANGE: -40°C~+105°C.

3. PART NUMBER: DS1034

4. PRODUCT NUMBER CODE:

DS1034- X X X X X X X X

SCREW DIM. A

- S: Standard(W/O nut)
- 1: 5.00 2: 3.00 3: 5.20
- 4: 4.80 5: 5.80 6: 4.00
- 7: 4.80mm(Inside thread M2.6*0.45p, outside thread unc#4-40)
- 8: 4.80mm(Inside thread M3.0*0.5p, outside thread unc#4-40)

SCREW TYPE

- S: Standard(W/O nut)
- 1: CC TYPE 2: CS TYPE
- 3: BR TYPE 4: BRJ TYPE DIM. B:6.00 C: 3~4mm
- 5: BRJ TYPE DIM. B:6.00 C: 5~6mm
- 6: BRJ TYPE DIM. B:6.00 C: 3~4mm (Inside thread M2.6*0.45P,outside thread unc#4-40)
- 7: BRJ TYPE DIM. B:6.00 C: 3~4mm (Inside thread M3.0*0.50P,outside thread unc#4-40)

CONTACT PLATING

- Si: FULL GOLD FLASH
- 0: SELECTIVE GOLD FLASH

SHELL PLATING

- T: FORNT & BACK SHELL TIN
- N: FORNT SHELL NICKEL,BACK SHELL TIN

HOUSING COLOR

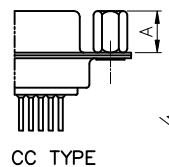
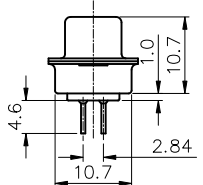
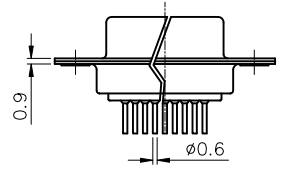
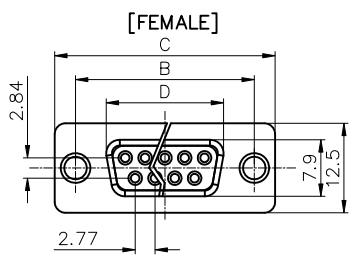
- B: BLACK W: WHITE
- U: BLUE

CONNECTOR TYPE

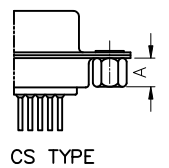
- M: MALE F: FEMALE

No.OF CONTACTS

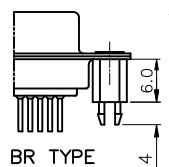
- 09: 9pos. 15: 15pos. 25: 25pos.
- 37: 37pos. 50: 50pos.



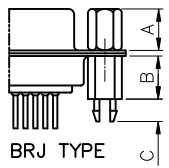
CC TYPE



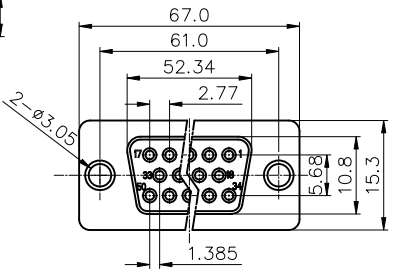
CS TYPE



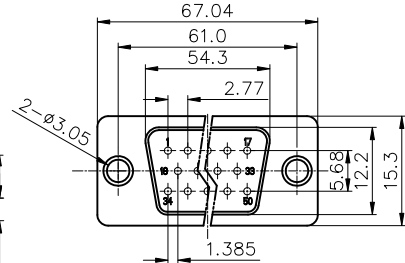
BR TYPE



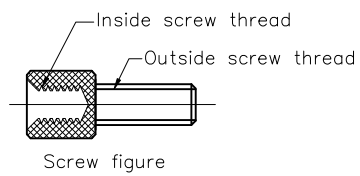
BRJ TYPE



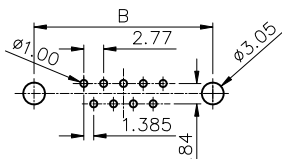
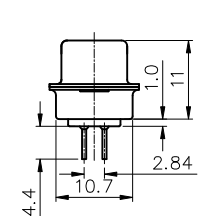
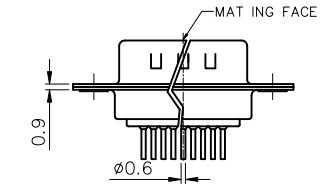
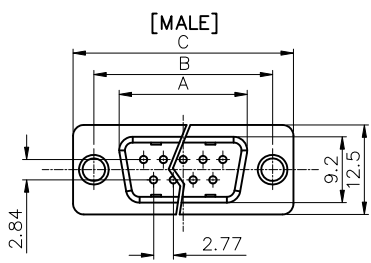
50pin Female Figure



50pin Male Figure



Screw figure




Dimension	Position	A±0.2	B±0.2	C±0.3	D
	9	17.90	24.99	30.80	16.33
	15	26.50	33.32	39.14	24.66
	25	40.00	47.04	53.04	38.38
	37	56.50	63.50	69.32	54.84

GENERAL TOLERANCE		ANGLE TOLERANCE	
X.	±0.60	X.	±5°
.X	±0.38	.X	±3°
.XX	±0.25	.XX	±2°

DRAWING TYPE	CUSTOMER		
SCALE	1:1	SHEET	1 OF 1
DRAWING NO.	C-DS1034-XXXXXXX-F		

PROJECTION	TITLE	D-SUB DIP STRAIGHT TYPE	
UNITS	mm	SERIES	DS1034 SERIES

 **晨翔电子有限公司**
CONNFLY CONNFLY ELECTRONIC CO. LTD

X-ON Electronics

Largest Supplier of Electrical and Electronic Components

Click to view similar products for [D-Sub Standard Connectors](#) category:

Click to view products by [Connfly](#) manufacturer:

Other Similar products are found below :

[56F711-015](#) [LV242999-142T12](#) [015-0339-000](#) [015-0341-000](#) [015-0349-000](#) [015-0350-000](#) [015-0372-008](#) [015-8544-011](#) [015-8755-001](#)
[017041-0005](#) [020419-0104](#) [012-0467-000](#) [012-9507-114](#) [020745-0008](#) [609-25P](#) [609-9P](#) [M24308/2-23Z](#) [M24308/2-36Z](#) [M24308315F](#)
[CT0P14S-5SXS](#) [CT0P22-14PS](#) [CT1E20-19SS](#) [CT2-10SL-3SC](#) [CT2-14S-2PCA34](#) [CT2-16S-17PS](#) [CT2-18-10PS-FMLB-D](#) [CT2-18-11PCAU](#)
[CT2-18-1PSAUA34](#) [CT2-22-19SC](#) [CT2-22-19SS-A206](#) [CT2-24-2PS](#) [CT2-28-12SC](#) [CT2-28-12SSA232](#) [CT6-10SL-3SC](#) [CT6-10SL-4SC](#)
[CT6-14S-2SC](#) [CT6-16-12SC](#) [CT6-18-10PSA206](#) [CT6-18-10PSA232](#) [CT6-18-10SSF127A206](#) [CT6-22-10PS](#) [CT6-28-22SS](#) [CT6E14S-2S0](#)
[CT6E14S-2SC-A206](#) [CT6E14S-5SC](#) [CT6E14SA7SC](#) [CT6E20-14SS](#) [CT6E22-10PS](#) [CT6E22-14PC](#) [CT6E22-14PS](#)