

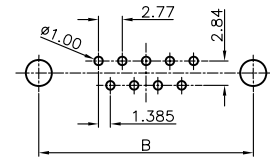
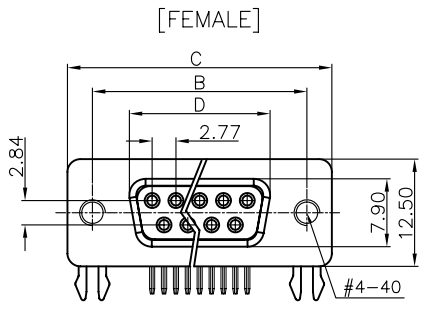
REV.	DESCRIPTION	DRAWN	CHECKED	APPROVED
A	NEW RELEASE	LJH 05/13/06'		LJC 05/13/06'
E	ADD SCREW TYPE	YCH 05/28/09'		LJC 05/28/09'
F	ADD SCREW TYPE	LJC 12/13/13'		

NOTES:

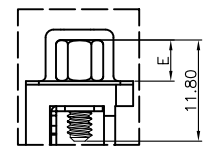
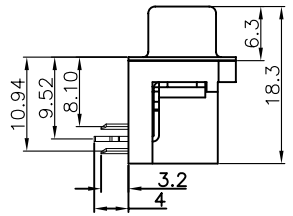
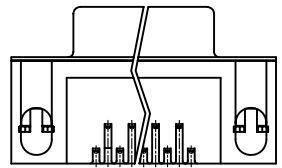
- SPECIFICATIONS:
  - VOLTAGE RATING: 250V AC.
  - CONTACT CURRENT RATING: 1.5A MAX. PER PIN.
  - CONTACT RESISTANCE: 20mΩ MAX.
  - DIELECTRIC WITHSTANDING VOLTAGE: 500V AC(rms) FOR 1 MINUTE.
  - INSULATION RESISTANCE: 1000MΩ MINI.
  - TEMPERATURE RANGE: -40°C~+105°C.
- PRODUCT NUMBER CODE:

DS1037-XXXXXXXX-XXX

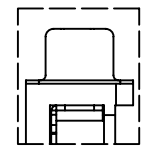
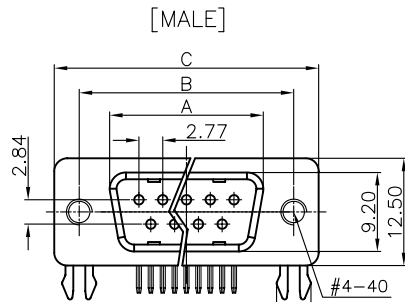
- SCREW MATERIALS (F)
  - F: STEEL C: COPPER ALLOY
- BOARD LOCK MATERIALS (F)
  - F: STEEL C: COPPER ALLOY
- INSULATOR MATERIALS (F)
  - 0: PBT UL94 V-0 2: PBT UL94 HB
- SCREW DIM. E
  - 4: 4.80mm 5: 5.80mm
  - 6: 4.80mm(Inside thread M2.6\*0.45p, outside thread unc#4-40)
  - M3: 4.80mm(Inside thread M3.0, outside thread unc#4-40)
- BOARD LOCK DIM. F
  - 4: 4.00mm 7: 3.70mm
- CONTACT PLATING
  - T: SELECTIVE GOLD FLASH
  - Si: FULL GOLD FLASH
  - 6: FULL TIN 1: SELECTIVE 10u" GOLD
- COLOR OF HOUSING
  - K: BLACK B: BLUE C: BLUE(PC99)
- SCREW TYPE
  - A: WITH SCREW TYPE B: WITH RIVET TYPE
  - C: WITH SCREW AND RIVET TYPE
  - D: RIVET TYPE WITH SCREWS IN BULK PACKAGE
  - E: WITH RIVET TYPE(N/A THREAD)
- SHELL PLATING
  - N: Nickel T: Tin
- CONNECTOR TYPE
  - M: MALE F: FEMALE
- No. OF CONTACT
  - 09,15,25,37



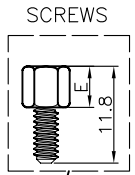
RECOMMEND PCB LAYOUT(TOLERANCE=±0.05)  
(VIEW FROM TOP SIDE)



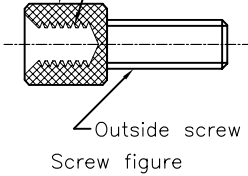
WITH SCREW TYPE



WITH RIVET TYPE

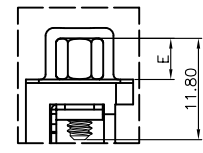
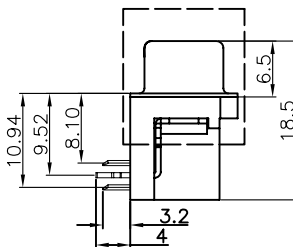
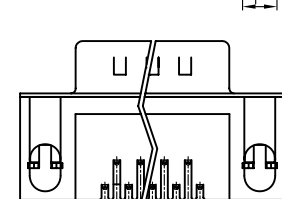


Inside screw thread



Outside screw thread

Screw figure



WITH SCREW AND RIVET TYPE

Dimensions:

Positions	A±0.2	B±0.2	C±0.2	D
9	17.90	24.99	30.80	16.33
15	26.50	33.32	39.14	24.66
25	40.00	47.04	53.04	38.38
37	56.50	63.50	69.32	54.84

GENERAL TOLERANCE		ANGLE TOLERANCE	
X.	±0.60	X.	±5°
.X	±0.38	.X	±3°
.XX	±0.25	.XX	±2°

PROJECTION	TITLE	D-SUB STANDARD	
		RIGHT ANGLE(7.2mm) TYPE	
UNITS	mm	SERIES	DS1037 SERIES
SHEET SIZE	A4		

DRAWING TYPE	CUSTOMER		
SCALE	1:1	SHEET	1 OF 1
DRAWING NO.	C-DS1037-XXXXXXXX-XXX-F		

**晨翔电子有限公司**  
**CONNFLY® CONNFLY ELECTRONIC CO., LTD**

## X-ON Electronics

Largest Supplier of Electrical and Electronic Components

*Click to view similar products for [D-Sub Standard Connectors](#) category:*

*Click to view products by [Connfly](#) manufacturer:*

Other Similar products are found below :

[56F711-015](#) [LV242999-142T12](#) [015-0339-000](#) [015-0341-000](#) [015-0349-000](#) [015-0350-000](#) [015-0372-008](#) [015-8544-011](#) [015-8755-001](#)  
[017041-0005](#) [020419-0104](#) [012-0467-000](#) [012-9507-114](#) [020745-0008](#) [609-25P](#) [609-9P](#) [M24308/2-23Z](#) [M24308/2-36Z](#) [M24308315F](#)  
[CT0M22-23SS](#) [CT0P14S-5SXS](#) [CT0P22-14PS](#) [CT1E20-19SS](#) [CT2-10SL-3SC](#) [CT2-14S-2PCA34](#) [CT2-16S-17PS](#) [CT2-18-10PS-FMLB-D](#)  
[CT2-18-11PCAU](#) [CT2-18-1PSAUA34](#) [CT2-22-19SC](#) [CT2-22-19SS-A206](#) [CT2-24-2PS](#) [CT2-28-12SC](#) [CT2-28-12SSA232](#) [CT6-10SL-3SC](#)  
[CT6-10SL-4SC](#) [CT6-14S-2SC](#) [CT6-16-12SC](#) [CT6-18-10PSA206](#) [CT6-18-10PSA232](#) [CT6-18-10SSF127A206](#) [CT6-22-10PS](#) [CT6-28-22SS](#)  
[CT6E14S-2S0](#) [CT6E14S-2SC-A206](#) [CT6E14S-5SC](#) [CT6E14SA7SC](#) [CT6E20-14SS](#) [CT6E22-10PS](#) [CT6E22-14PC](#)