

REV.	DESCRIPTION	DRAWN	CHECKED	APPROVED
A	NEW RELEASE	LJH 09/27/05'	~	LJC 09/27/05'
B	ADD SCREW TYPE D	LL 06/06/06'	~	LJC 06/06/06'
C	ADD P/N CODE	LJC 12/22/13'		

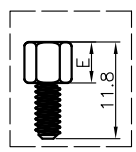
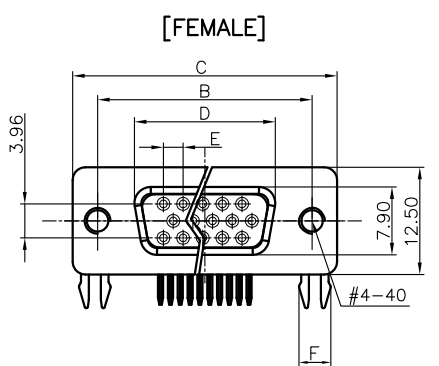
NOTES:

1. PRODUCTS PERFORMANCE:
 1.0 VOLTAGE RATING: 250V AC/DC.
 1.1 CONTACT CURRENT RATING: 1.5A MAX. PER PIN.
 1.2 CONTACT RESISTANCE: 20mΩ MAX.
 1.3 DIELECTRIC WITHSTANDING VOLTAGE: 500V AC(rms) FOR 1 MINUTE.
 1.4 INSULATION RESISTANCE: 1000MΩ MIN.
 1.5 TEMPERATURE RANGE: -40°C~+105°C.

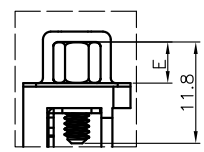
2. PRODUCT NUMBER CODE:

DS1038 - X X X X X X X X - X X X

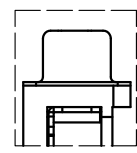
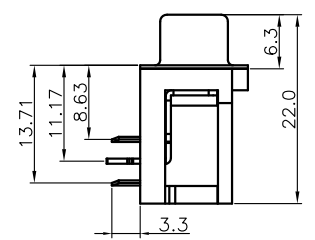
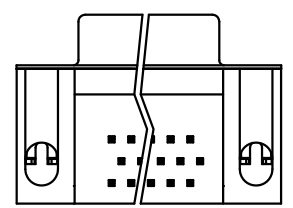
- SCREW MATERIALS Ⓢ
F: STEEL C: COPPER ALLOY
- BOARD LOCK MATERIALS Ⓢ
F: STEEL C: COPPER ALLOY
- INSULATOR MATERIALS Ⓢ
0: PBT UL94 V-0 2: PBT UL94 HB
- SCREW DIM. E
4: 4.80mm 5: 5.80mm
- BOARD LOCK DIM. F
7: 3.70mm 4: 4.00mm
- SCREW TYPE
A: WITH SCREW TYPE B: WITH RIVET TYPE
C: RIVET TYPE WITH FIXED SCREWS
D: RIVET TYPE WITH SCREWS IN BULK PACKAGE
- CONTACT PLATING
Si: SELECTIVE GOLD FLASH 6: FULL TIN
8: FULL GOLD FLASH
- SHELL PLATING
N: Nickel T: Tin
- COLOR OF HOUSING
Y: Yellow B: Black U: Blue C: Blue(PC99)
- CONNECTOR TYPE
M: MALE F: FEMALE
- No. OF Contacts
15: 15pos. 26: 26pos. 44: 44pos. 62: 62pos.



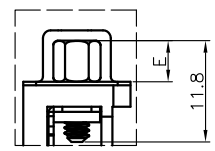
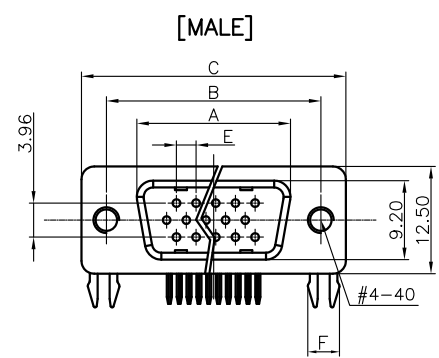
SCREWS



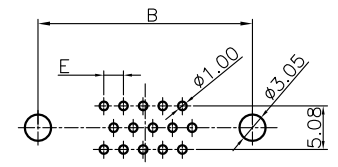
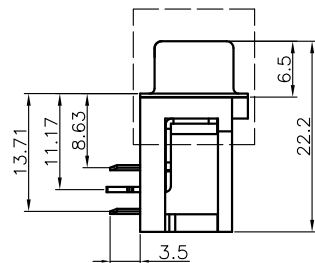
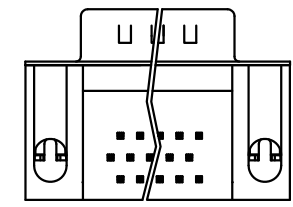
WITH SCREW TYPE



WITH RIVET TYPE



RIVET TYPE WITH FIXED SCREWS



RECOMMEND PCB LAYOUT(TOLERANCE=±0.05)
(VIEW FROM TOP SIDE)

Dimension

Position	A±0.2	B±0.2	C±0.3	D	E
15	17.90	24.99	30.84	16.33	2.29
26	26.50	33.32	39.14	24.66	2.29
44	40.00	47.04	53.04	38.38	2.29
62	56.50	63.50	69.32	54.84	2.41

GENERAL TOLERANCE		ANGLE TOLERANCE	
X.	±0.60	X.	±5°
.X	±0.38	.X	±3°
.XX	±0.25	.XX	±2°

PROJECTION	TITLE	H.D-SUB RIGHT ANGLE TYPE	
UNITS	mm		
SHEET SIZE	A4	SERIES	DS1038 SERIES

DRAWING TYPE	CUSTOMER		
SCALE	1:1	SHEET	1 OF 1
DRAWING NO.	C-DS1038-XXXXXXXX-XXX-C		

晨翔电子有限公司
CONNFLY® CONNFLY ELECTRONIC CO., LTD

X-ON Electronics

Largest Supplier of Electrical and Electronic Components

Click to view similar products for [D-Sub Standard Connectors](#) category:

Click to view products by [Connfly](#) manufacturer:

Other Similar products are found below :

[56F711-015](#) [LV242999-142T12](#) [015-0339-000](#) [015-0341-000](#) [015-0349-000](#) [015-0350-000](#) [015-0372-008](#) [015-8544-011](#) [015-8755-001](#)
[017041-0005](#) [020419-0104](#) [012-0467-000](#) [012-9507-114](#) [020745-0008](#) [609-25P](#) [609-9P](#) [M24308/2-23Z](#) [M24308/2-36Z](#) [CT0E22-14SC](#)
[CT0P14S-5SXS](#) [CT0P22-14PS](#) [CT0TA16-11SXCA232](#) [CT1E20-19SS](#) [CT2-10SL-3SC](#) [CT2-14S-2PCA34](#) [CT2-16S-17PS](#) [CT2-18-10PS-](#)
[FMLB-D](#) [CT2-18-11PCAU](#) [CT2-18-1PSAUA34](#) [CT2-22-19SC](#) [CT2-22-19SS-A206](#) [CT2-24-2PS](#) [CT2-28-12SC](#) [CT2-28-12SSA232](#) [CT6-](#)
[10SL-3SC](#) [CT6-10SL-4SC](#) [CT6-14S-2SC](#) [CT6-16-12SC](#) [CT6-18-10PSA206](#) [CT6-18-10PSA232](#) [CT6-18-10SSF127A206](#) [CT6-22-10PS](#)
[CT6-28-22SS](#) [CT6E14S-2S0](#) [CT6E14S-2SC-A206](#) [CT6E14S-5SC](#) [CT6E14SA7SC](#) [CT6E20-14SS](#) [CT6E22-10PS](#) [CT6E22-14PC](#)