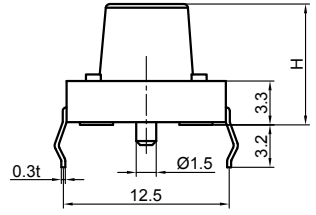
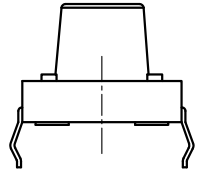
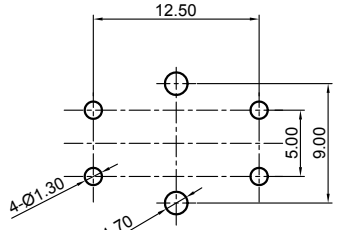
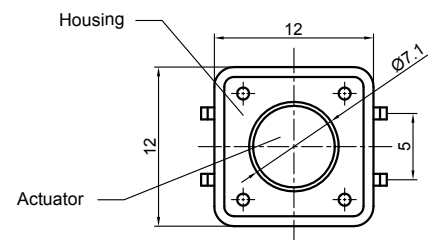


| | |
|------|---|
| Dept | |
| Qty | |
| DC | 1 |
| ED | 1 |
| IE | 1 |
| ISO | 1 |
| PD | 1 |
| R&D | 1 |
| SD | 1 |
| QA | 1 |
| QC | 1 |
| QE | 1 |

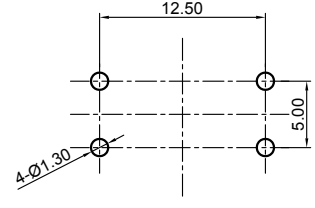
The information provided herein is from CONNELY Electronic Co., Ltd. and is confidential. Any disclosure to a party other than the recipient is prohibited. The intellectual properties and its rights contained herein, including but not limited to, trademarks, patents, copyrights, trade secrets, and technical know-how, are owned exclusively by CONNELY or its affiliates. Unauthorized use or reproduction of any part of this document is strictly prohibited. CONNELY may enforce its intellectual property rights at its own discretion, failures or delays in exercise of such rights, does not constitute a waiver of such rights.



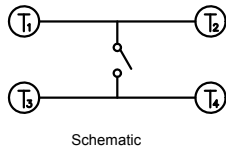
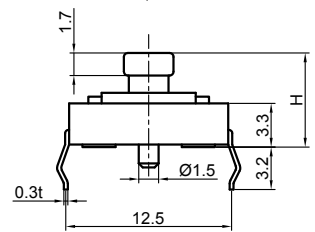
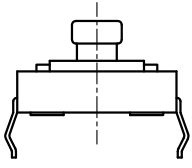
Recommend PCB layout
Tolerance:±0.05
(W/ Post)

Without post

Without cover



Recommend PCB layout
Tolerance:±0.05
(W/O Post)



Schematic

Without post

With cover



(Series Image-Reference Only)

| REV. | DESCRIPTION | DRAWN | CHECKED | APPROVED |
|------|----------------|---------------|---------|---------------|
| A | NEW RELEASE | HP 23/06/05' | | LJC 23/06/05' |
| E | DRAWING UPDATE | JLZ 05/24/19' | | |
| | | | | |

- NOTES:
- Specifications
 - Switch function: Single pole Single throw
 - Contact rating: 50mA at 12vdc
 - Insulation resistance:100MΩ min at 500vdc
 - Contact resistance:100mΩ max
 - Operating life:50,000-100,000 cycles
 - Operating force: see below
 - Stop strength: place the switch such that vertical, a static load of 3kgf shall be applied in the direction of stem,operation for a period of 15 secs.
 - Stroke: (12x12)0.35±0.1mm
 - Operation temperature range: -20°C to 70°C
 - Storage temperature range: -20°C to +70°C
 - Wave soldering: recommended solder temperature at 500°F(260°C)max. 5 seconds,subject to pcb 1.6mm thickness.
 - Hand soldering: usea soldering iron of 30 watts,controlled at 608°F(320°C)approximately 2 seconds while applying solder.
 - Product number code:

DS1041 - X X X X X X X X X X

- Post support:
X: W/O Post
N/A Code: W/ Post
- Operating Life
5: 50000 cycles
10: 100000 cycles
- Operating force
130: 130gf 160: 160gf
170: 170gf 250: 250gf
- Cover type
X: W/O cover
S: W/ cover(For H=7.3mm only)
- Packing type
A: Polybag
B: Tube
- Actuator color
U: Blue K: Black N: Brown R: Red
S: Salmon Y: Yellow
- Housing color
U: Blue K: Black N: Brown R: Red
S: Salmon Y: Yellow
- Profile height(DIM.H, H>7.3 The cover is cylindrical,Black)
1:4.3mm 2:5.0mm 3:7.0mm 4:7.3mm
5:9.5mm 6:13.0mm 7:7.5mm 8:8.0mm
9:8.5mm 10:12.0mm 11:12.5mm 12:17.0mm
13:7.8mm 14:9.0mm 15:10.0mm 16:11.0mm
17:15.0mm 18:20.0mm 19:14.0mm
- Size
2:12mmX12mm

| | | | | | | | |
|-------------------|-------|-----------------------|-----|------------|--|----------------------|--|
| GENERAL TOLERANCE | | ANGLE TOLERANCE | | PROJECTION | | TITLE | |
| X. | ±0.60 | X. | ±5° | | | TACT SWITCH DIP TYPE | |
| .X | ±0.38 | .X | ±3° | UNITS | | mm | |
| .XX | ±0.25 | .XX | ±2° | SHEET SIZE | | A4 | |
| DRAWING TYPE | | CUSTOMER | | SERIES | | DS1041 SERIES | |
| SCALE | | 1:1 | | SHEET | | 1 OF 1 | |
| DRAWING NO. | | C-DS1041-XXXXXXXX-X-E | | | | | |

晨翔电子有限公司
CONNFLY CONNFLY ELECTRONIC CO. LTD

X-ON Electronics

Largest Supplier of Electrical and Electronic Components

Click to view similar products for [Tactile Switches](#) category:

Click to view products by [Connfly](#) manufacturer:

Other Similar products are found below :

[6407-250V-25273P](#) [ADTSA62NV](#) [B3F-3123](#) [1977177-8](#) [1977266-1](#) [ADTSA63NV](#) [ADTSM21NSVTR](#) [ADTSM25RVTR](#) [ADTSM32NVTR](#)
[ADTSMW64RV](#) [1977120-6](#) [FSMRA4JHA04](#) [GS4.70F300QP](#) [KSC241J SP DELTA LFS](#) [3FTL600RAS](#) [3FTL640RAS](#) [6407-250V-25343P](#)
[ADTSM31NVTR](#) [2-1977120-7](#) [TSJW-5.2-260-TR](#) [Y651050400P](#) [KMT011MNGJLHS](#) [70-201.0](#) [ADTSG648NV](#) [ADTSM62KSVTR](#)
[ADTSM648NV](#) [95C06E3RAT](#) [3ATH9Q](#) [FSMRA8JHA04](#) [HARS0073](#) [Y33R411N9FPLFT](#) [Y33R51139FPLFT](#) [Y31C01402FPLFS](#)
[PTS645SK50SMTR92](#) [ADTSM32NVB](#) [KMS233GPWTLFG](#) [Y78B64124FP](#) [Y31CJ244KFP LFS](#) [Y96D113G0FP LFS](#) [Y33A812C5FP LFT](#)
[Y56B2D120FP LFS](#) [Y31C5144KFP LFS](#) [PTS645 DVM83-BN125-2 LFS](#) [B3W 1000G](#) [KSC621G OL LFS](#) [B3F 1002C](#) [B3F 0047H](#) [B3W](#)
[1002C](#) [B3F 5001G](#) [B3W 1100C](#)