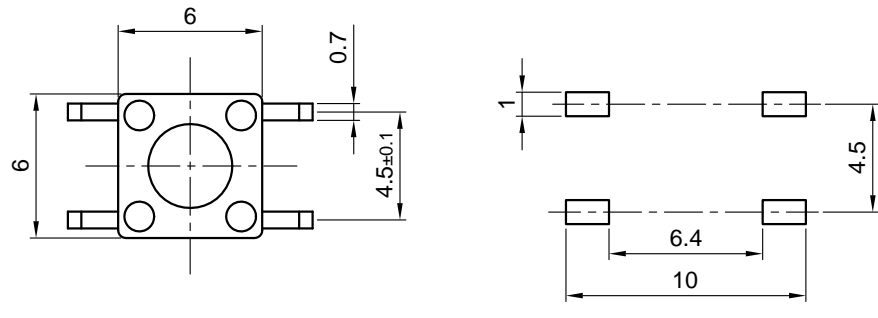
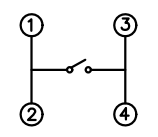
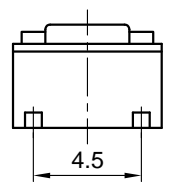
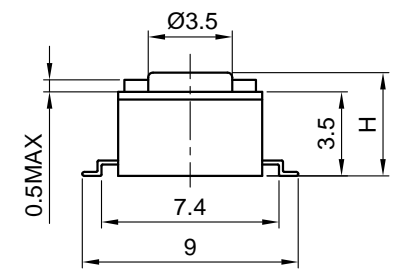


Dept	
Qty	
DC	1
ED	1
IE	1
ISO	1
PD	1
R&D	1
SD	1
QA	1
QC	1
QE	1

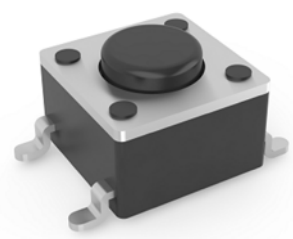
The information provided herein is from CONNELY Electronic Co., Ltd. and is confidential. Any disclosure to a party other than the recipient is prohibited. The intellectual properties and its rights contained herein, including but not limited to, trademarks, patents, copyrights, trade secrets, and technical know-how, are owned exclusively by CONNELY or its affiliates. Unauthorized use or modification is strictly prohibited. CONNELY may enforce its intellectual property rights at its own discretion, failure or delays to exercise such rights does not constitute a waiver of such rights.



Recommend PCB layout  
Tolerance:±0.05



Circuit diagram



(Series Image-Reference Only)

REV.	DESCRIPTION	DRAWN	CHECKED	APPROVED
A	NEW RELEASE	LL 23/06/05		LJC 23/06/05'
B	DRAWING UPDATE	JLZ 08/24/16'	HZW 08/24/16'	LJC 08/24/16'
D	DRAWING UPDATE	JLZ 01/16/19'		

NOTES:

- Specifications
  - Switch Function: Single Pole Single Throw
  - Contact Rating: 50mA at 12Vdc
  - Insulation Resistance:100MΩ min.
  - Contact Resistance:100mΩ max.
  - Operating Life:100,00 cycles
  - Stop Strength: Place The Switch Such That Vertical, A Static Load Of 3Kgf Shall Be Applied In The Direction
  - Operation Temperature Range: -25°C to +70°C
  - Wave Soldering: Recommended Solder Temperature At 500°f(260°C)max. 5 Seconds,Subject To PCB 1.6mm Thickness.
  - Hand Soldering: Use Soldering Iron Of 30 Watts,Controlled At 608°f(320°C)Approximately 2 Seconds.
- Product number code:

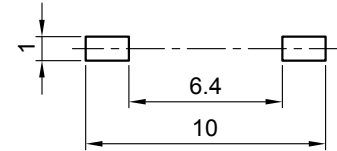
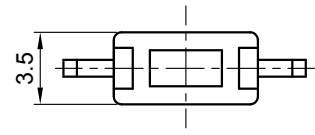
DS1042-03 -	X	X	X	X	X	X	X													
	Operating Life	5: 50000 cycles	10: 100000 cycles	20: 200000 cycles	Operating Force	130: 130gf	160: 160gf	170: 170gf	250: 250gf											
	Packing Type	A: Polybag	B: Tube	R: Tape & Reel	Actuator Color	K: Black	N: Brown	Housing Color	K: Black	N: Brown										
	Profile Height(DIM. H)	1:4.3mm	2:5.0mm	3:7.0mm	4:7.3mm	5:9.5mm	6:13.0mm	7:7.5mm	8:8.0mm	9:8.5mm	10:12.0mm	11:12.5mm	12:17.0mm	13:7.8mm	14:9.0mm	15:10.0mm	16:11.0mm	17:15.0mm	18:5.3mm	19:5.5mm
	Size	1: 6mm*6mm																		

GENERAL TOLERANCE	ANGLE TOLERANCE	PROJECTION		TITLE	TACT SWITCH SMT TYPE 6mmX6mm		
X. ±0.60	X. ±5°	UNITS	mm	SHEET SIZE	A4	SERIES	DS1042-03 SERIES
.X ±0.38	.X ±3°	晨翔电子有限公司 CONNELY CONNELY ELECTRONIC CO. LTD					
.XX ±0.25	.XX ±2°						
DRAWING TYPE	CUSTOMER						
SCALE	1:1	SHEET	1 OF 3				
DRAWING NO.	C-DS1042-03-1XXXXXX-D						

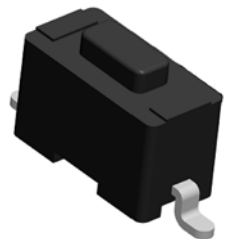
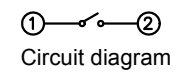
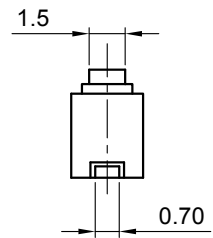
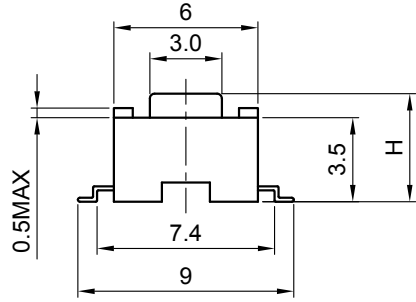
Dept	
Qty	
DC	1
ED	1
IE	1
ISO	1
PD	1
R&D	1
SD	1
QA	1
QC	1
QE	1

The information provided herein is from CONNELY Electronic Co., Ltd. and is confidential. Any disclosure to a party other than the recipient is prohibited. The intellectual properties and its rights contained herein, including but not limited to, trademarks, patents, copyrights, trade secrets, and technical know-how, are owned exclusively by CONNELY or its affiliates. Unauthorized use or modification is strictly prohibited. CONNELY may enforce its intellectual property rights at its own discretion, failure or delays to exercise such rights does not constitute a waiver of such rights.

REV.	DESCRIPTION	DRAWN	CHECKED	APPROVED
A	NEW RELEASE	LL 23/06/05		LJC 23/06/05'
B	DRAWING UPDATE	JLZ 08/24/16'	HZW 08/24/16'	LJC 08/24/16'
D	DRAWING UPDATE	JLZ 01/16/19'		



Recommend PCB layout  
Tolerance±0.05



(Series Image-Reference Only)

**NOTES:**

- Specifications
  - Switch Function: Single Pole Single Throw
  - Contact Rating: 50mA at 12Vdc
  - Insulation Resistance:100MΩ min.
  - Contact Resistance:100mΩ max.
  - Operating Life:100,00 cycles
  - Stop Strength: Place The Switch Such That Vertical, A Static Load Of 3Kgf Shall Be Applied In The Direction
  - Operation Temperature Range: -25°C to +70°C
  - Wave Soldering: Recommended Solder Temperature At 500°f(260°C)max. 5 Seconds,Subject To PCB 1.6mm Thickness.
  - Hand Soldering: Use Soldering Iron Of 30 Watts,Controlled At 608°f(320°C)Approximately 2 Seconds.
- Product number code:

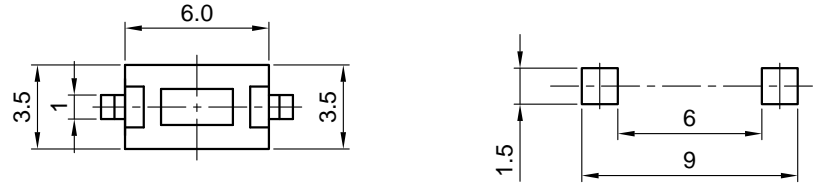
DS1042-03 -	X	X	X	X	X	X	
	Operating Life	5: 50000 cycles	10: 100000 cycles	20: 200000 cycles	Operating Force	130: 130gf	160: 160gf
		170: 170gf	250: 250gf	Packing Type	A: Polybag	B: Tube	
					R: Tape & Reel		
					Actuator Color	K: Black	N:Brown
					Housing Color	K: Black	N:Brown
					Profile Height(DIM. H)	1:4.3mm	2:5.0mm
						3:7.0mm	4:7.3mm
						5:9.5mm	6:13.0mm
						7:7.5mm	8:8.0mm
						9:8.5mm	10:12.0mm
						11:12.5mm	12:17.0mm
						13:7.8mm	14:9.0mm
						15:10.0mm	16:11.0mm
						17:15.0mm	18:5.3mm
						19:5.5mm	
					Size	2: 3mm*6mm	

GENERAL TOLERANCE	ANGLE TOLERANCE	PROJECTION		TITLE	TACT SWITCH SMT TYPE 3.5mmX6mm	
X. ±0.60	X. ±5°	UNITS	mm	SHEET	2 OF 3	
.X ±0.38	.X ±3°	SHEET SIZE	A4	SERIES	DS1042-03 SERIES	
.XX ±0.25	.XX ±2°	<b>晨翔电子有限公司</b> <b>CONNELY ELECTRONIC CO., LTD</b>				
DRAWING TYPE	CUSTOMER					
SCALE	1:1					
DRAWING NO.	C-DS1042-03-2XXXXXX-D					

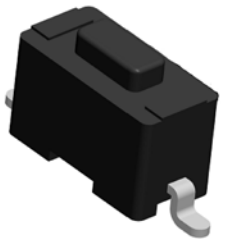
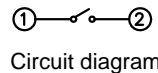
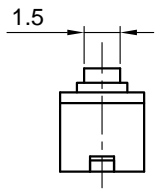
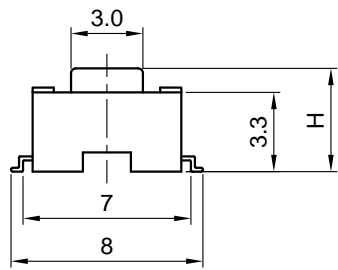
Dept	
Qty	
DC	1
ED	1
IE	1
ISO	1
PD	1
R&D	1
SD	1
QA	1
QC	1
QE	1

The information provided herein is from CONNELY Electronic Co., Ltd. and is confidential. Any disclosure to a party other than the recipient is prohibited. The intellectual properties and its rights contained herein, including but not limited to, trademarks, patents, copyrights, trade secrets, and technical know-how, are owned exclusively by CONNELY or its affiliates. Unauthorized use or modification is strictly prohibited. CONNELY may enforce its intellectual property rights at its own discretion, failure or delays to exercise such rights does not constitute a waiver of such rights.

REV.	DESCRIPTION	DRAWN	CHECKED	APPROVED
A	NEW RELEASE	LL 23/06/05		LJC 23/06/05'
B	DRAWING UPDATE	JLZ 08/24/16'	HZW 08/24/16'	LJC 08/24/16'
D	DRAWING UPDATE	JLZ 01/16/19'		



Recommend PCB layout  
Tolerance±0.05



(Series Image-Reference Only)

**NOTES:**

- Specifications
  - Switch Function: Single Pole Single Throw
  - Contact Rating: 50mA at 12Vdc
  - Insulation Resistance:100MΩ min.
  - Contact Resistance:100mΩ max.
  - Operating Life:100,00 cycles
  - Stop Strength: Place The Switch Such That Vertical, A Static Load Of 3KgF Shall Be Applied In The Direction
  - Operation Temperature Range: -25°C to +70°C
  - Wave Soldering: Recommended Solder Temperature At 500°f(260°C)max. 5 Seconds,Subject To PCB 1.6mm Thickness.
  - Hand Soldering: Use Soldering Iron Of 30 Watts,Controlled At 608°f(320°C)Approximately 2 Seconds.
- Product number code:

DS1042-03 -	X	X	X	X	X	X	
	Operating Life	5: 50000 cycles	10: 100000 cycles	20: 200000 cycles	Operating Force	130: 130gf	160: 160gf
					170: 170gf	250: 250gf	Packing Type
							A: Polybag B: Tube
							R: Tape & Reel
							Actuator Color
							K: Black N:Brown
							Housing Color
							K: Black N:Brown
							Profile Height(DIM. H)
							1:4.3mm 2:5.0mm 3:7.0mm 4:7.3mm
							5:9.5mm 6:13.0mm 7:7.5mm 8:8.0mm
							9:8.5mm 10:12.0mm 11:12.5mm 12:17.0mm
							13:7.8mm 14:9.0mm 15:10.0mm 16:11.0mm
							17:15.0mm 18:5.3mm 19:5.5mm
							Size
							3: 3.5mm*6mm

GENERAL TOLERANCE	ANGLE TOLERANCE	PROJECTION		TITLE	TACT SWITCH SMT TYPE 3.5mmX6mm	
X. ±0.60	X. ±5°	UNITS	mm	SHEET SIZE	A4	SERIES DS1042-03 SERIES
.X ±0.38	.X ±3°	<b>晨翔电子有限公司</b> <b>CONNELY ELECTRONIC CO. LTD</b>				
.XX ±0.25	.XX ±2°					
DRAWING TYPE	CUSTOMER	<b>晨翔电子有限公司</b> <b>CONNELY ELECTRONIC CO. LTD</b>				
SCALE	1:1 SHEET 3 OF 3					
DRAWING NO.	C-DS1042-03-3XXXXXX-D					

## X-ON Electronics

Largest Supplier of Electrical and Electronic Components

*Click to view similar products for [Tactile Switches](#) category:*

*Click to view products by [Connfly](#) manufacturer:*

Other Similar products are found below :

[5GTH92001](#) [5GTH9202242](#) [6407-250V-25273P](#) [ADTSA62NV](#) [ADTSA62RV](#) [B3F-3123](#) [1977177-8](#) [1977266-1](#) [ADTSA63NV](#)  
[ADTSM21NSVTR](#) [ADTSM25RVTR](#) [ADTSM32NVTR](#) [ADTSMW64RV](#) [FSMRA4JHA04](#) [GS4.70F300QP](#) [KSC241J SP DELTA LFS](#)  
[3FTL600RAS](#) [3FTL640RAS](#) [Y96K132V0FPLFS](#) [5GTH9658222](#) [6407-250V-25343P](#) [ADTSM31NVTR](#) [2-1977120-7](#) [TSJW-5.2-260-TR](#)  
[KMT011MNGJLHS](#) [B3WN6002S](#) [70-201.0](#) [ADTSG648NV](#) [ADTSM62KSVTR](#) [ADTSM648NV](#) [95C06E3RAT](#) [5GTH96561](#) [3ATH9Q](#)  
[FSMRA8JHA04](#) [HARS0073](#) [Y33R411N9FPLFT](#) [Y31C01402FPLFS](#) [PTS645SK50SMTR92](#) [ADTSM32NVB](#) [KMS233GPWTLFG](#)  
[Y78B64124FP](#) [Y96D113G0FP LFS](#) [Y33A812C5FP LFT](#) [Y56B2D120FP LFS](#) [PTS645 DVM83-BN125-2 LFS](#) [B3W 1000G](#) [KSC621G OL](#)  
[LFS](#) [B3F 1002C](#) [B3F 0047H](#) [B3F 1000G](#)