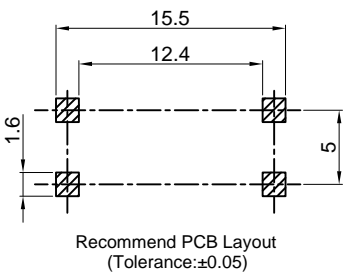
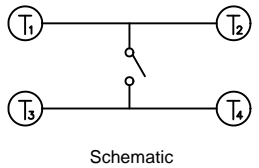
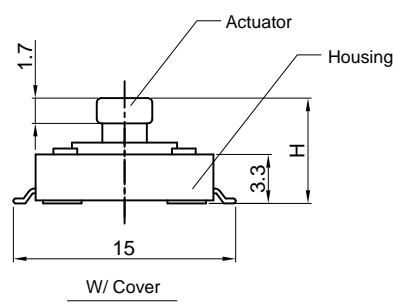
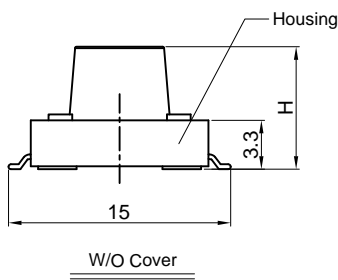
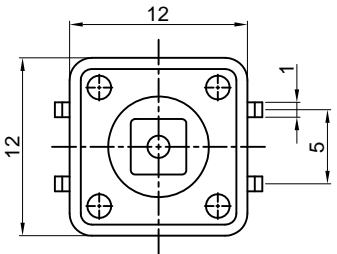
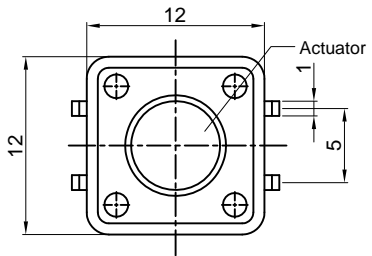


Dept	
Qty	
DC	1
ED	1
IE	1
ISO	1
PD	1
R&D	1
SD	1
QA	1
QC	1
QF	1

The information provided herein is from CONNELY Electronic Co., Ltd. and is confidential. Any disclosure to a party other than the recipient is prohibited. The intellectual properties and its rights contained herein, including but not limited to, trademarks, patents, copyrights, trade secrets, and technical know-how, are owned exclusively by CONNELY or its affiliates. Unauthorized use or reproduction of any part of this document is strictly prohibited. CONNELY may enforce its intellectual property rights at its own discretion, failures or delays to exercise such rights does not constitute a waiver of such rights.



(Series Image-Reference Only)

REV.	DESCRIPTION	DRAWN	CHECKED	APPROVED
A	NEW RELEASE	HP 13/06/05		LJC 13/06/05
D	DRAWING UPDATE	JLZ 06/01/19'		

NOTES:

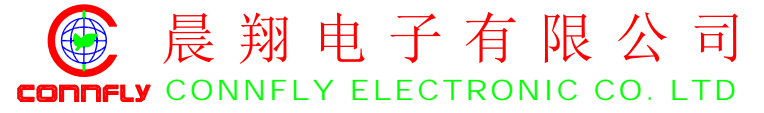
- Specifications
  - switch function: Single pole Single throw
  - contact rating: 50mA at 12vdc
  - insulation resistance: 100MΩ min at 500vdc
  - contact resistance: 100mΩ max
  - operating life: 100,00 cycles
  - operating force: see below
  - stop strength: place the switch such that vertical, a static load of 3kgf shall be applied in the direction of stem, operation for a period of 15 secs.
  - stroke: (12x12)0.35±0.1mm
  - operation temperature range: -20°C to 70°C
  - storage temperature range: -20°C to +70°C
  - wave soldering: recommended solder temperature at 500°f(260°C)max. 5 seconds, subject to pcb 1.6mm thickness.
  - hand soldering: use a soldering iron of 30 watts, controlled at 608°f(320°C) approximately 2 seconds while applying solder.

3. Product number code:

DS1042 -	X	X	X	X	X	X	X	X	X	
										Operating Life
										5: 50000 cycles 10: 100000 cycles
										Operating force
										130: 130gf 160: 160gf
										170: 170gf 250: 250gf
										Cover type
										X: W/O cover
										S: W/ cover (For H=7.3mm only)
										Packing type
										A: polybag B: tube R: tape on reel
										Actuator color
										U: blue K: black N: brown R: red
										Y: yellow S: Salmon
										Housing color
										U: blue K: black N: brown R: red
										Y: yellow S: Salmon
										Profile Height (DIM.H, H>7.3 The cover is cylindrical, Black)
										1: 4.3mm 2: 5.0mm 3: 7.0mm 4: 7.3mm 5: 9.5mm 6: 13.0mm
										7: 7.5mm 8: 8.0mm 9: 8.5mm 10: 12.0mm 11: 12.5mm 12: 17.0mm
										13: 7.8mm 14: 9.0mm 15: 10.0mm 16: 11.0mm 17: 6.0mm
										Size
										2: 12mmX12mm

GENERAL TOLERANCE		ANGLE TOLERANCE	
X.	±0.60	X.	±5°
.X	±0.38	.X	±3°
.XX	±0.25	.XX	±2°
DRAWING TYPE		CUSTOMER	
SCALE		1:1	SHEET 1 OF 1
DRAWING NO.		C-DS1042-XXXXXX-D	

PROJECTION		TITLE	TACT SWITCH SMT TYPE
UNITS	mm	SERIES	DS1042 SERIES
SHEET SIZE	A4		



## X-ON Electronics

Largest Supplier of Electrical and Electronic Components

*Click to view similar products for [Tactile Switches](#) category:*

*Click to view products by [Connfly](#) manufacturer:*

Other Similar products are found below :

[6407-250V-25273P](#) [ADTSA62NV](#) [B3F-3123](#) [1977177-8](#) [1977266-1](#) [ADTSA63NV](#) [ADTSM21NSVTR](#) [ADTSM25RVTR](#) [ADTSM32NVTR](#)  
[ADTSMW64RV](#) [1977120-6](#) [FSMRA4JHA04](#) [GS4.70F300QP](#) [KSC241J SP DELTA LFS](#) [3FTL600RAS](#) [3FTL640RAS](#) [6407-250V-25343P](#)  
[ADTSM31NVTR](#) [2-1977120-7](#) [TSJW-5.2-260-TR](#) [Y651050400P](#) [KMT011MNGJLHS](#) [70-201.0](#) [ADTSG648NV](#) [ADTSM62KSVTR](#)  
[ADTSM648NV](#) [95C06E3RAT](#) [3ATH9Q](#) [FSMRA8JHA04](#) [HARS0073](#) [Y33R411N9FPLFT](#) [Y33R51139FPLFT](#) [Y31C01402FPLFS](#)  
[PTS645SK50SMTR92](#) [ADTSM32NVB](#) [KMS233GPWTLFG](#) [Y78B64124FP](#) [Y31CJ244KFP LFS](#) [Y96D113G0FP LFS](#) [Y33A812C5FP LFT](#)  
[Y56B2D120FP LFS](#) [Y31C5144KFP LFS](#) [PTS645 DVM83-BN125-2 LFS](#) [B3W 1000G](#) [KSC621G OL LFS](#) [B3F 1002C](#) [B3F 0047H](#) [B3W](#)  
[1002C](#) [B3F 5001G](#) [B3W 1100C](#)