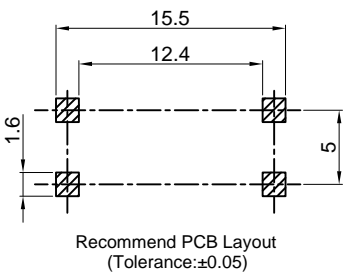
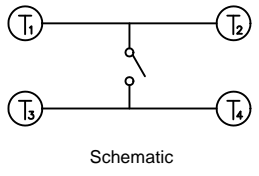
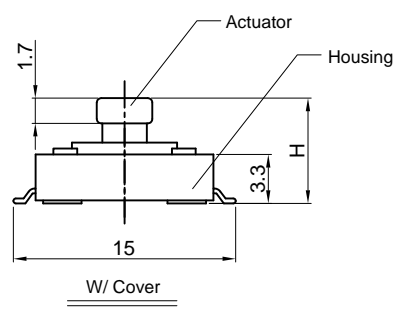
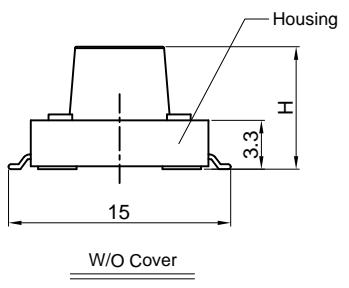
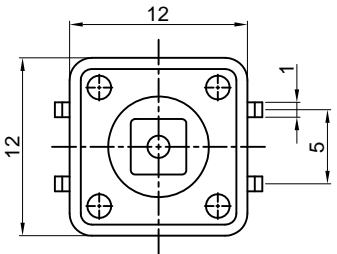
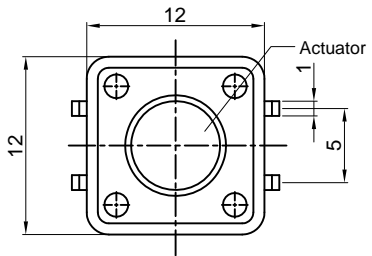


Dept	
Qty	
DC	1
ED	1
IE	1
ISO	1
PD	1
R&D	1
SD	1
QA	1
QC	1
QF	1

The information provided herein is from CONNELY Electronic Co., Ltd. and is confidential. Any disclosure to a party other than the recipient is prohibited. The intellectual properties and its rights contained herein, including but not limited to, trademarks, patents, copyrights, trade secrets, and technical know-how, are owned exclusively by CONNELY or its affiliates. Unauthorized use or reproduction of any part of this document is strictly prohibited. CONNELY may enforce its intellectual property rights at its own discretion, failures or delays to exercise such rights does not constitute a waiver of such rights.



(Series Image-Reference Only)

REV.	DESCRIPTION	DRAWN	CHECKED	APPROVED
A	NEW RELEASE	HP 13/06/05		LJC 13/06/05
D	DRAWING UPDATE	JLZ 06/01/19'		

NOTES:

- Specifications
 - switch function: Single pole Single throw
 - contact rating: 50mA at 12vdc
 - insulation resistance: 100MΩ min at 500vdc
 - contact resistance: 100mΩ max
 - operating life: 100,00 cycles
 - operating force: see below
 - stop strength: place the switch such that vertical, a static load of 3kgf shall be applied in the direction of stem, operation for a period of 15 secs.
 - stroke: (12x12)0.35±0.1mm
 - operation temperature range: -20°C to 70°C
 - storage temperature range: -20°C to +70°C
 - wave soldering: recommended solder temperature at 500°f(260°C)max. 5 seconds, subject to pcb 1.6mm thickness.
 - hand soldering: use a soldering iron of 30 watts, controlled at 608°f(320°C) approximately 2 seconds while applying solder.

3. Product number code:

DS1042 - X X X X X X X X

- Operating Life: 5: 50000 cycles 10: 100000 cycles
- Operating force: 130: 130gf 160: 160gf 170: 170gf 250: 250gf
- Cover type: X: W/O cover S: W/ cover (For H=7.3mm only)
- Packing type: A: polybag B: tube R: tape on reel
- Actuator color: U: blue K: black N: brown R: red Y: yellow S: Salmon
- Housing color: U: blue K: black N: brown R: red Y: yellow S: Salmon
- Profile Height (DIM.H, H>7.3 The cover is cylindrical, Black): 1: 4.3mm 2: 5.0mm 3: 7.0mm 4: 7.3mm 5: 9.5mm 6: 13.0mm 7: 7.5mm 8: 8.0mm 9: 8.5mm 10: 12.0mm 11: 12.5mm 12: 17.0mm 13: 7.8mm 14: 9.0mm 15: 10.0mm 16: 11.0mm 17: 6.0mm
- Size: 2: 12mmX12mm

GENERAL TOLERANCE		ANGLE TOLERANCE		PROJECTION		TITLE	
X.	±0.60	X.	±5°	UNITS	mm	TACT SWITCH SMT TYPE	
.X	±0.38	.X	±3°	SHEET SIZE	A4	SERIES	DS1042 SERIES
.XX	±0.25	.XX	±2°				
DRAWING TYPE		CUSTOMER					
SCALE	1:1	SHEET	1 OF 1				
DRAWING NO.		C-DS1042-XXXXXX-D					

X-ON Electronics

Largest Supplier of Electrical and Electronic Components

Click to view similar products for [Tactile Switches](#) category:

Click to view products by [Connfly](#) manufacturer:

Other Similar products are found below :

[5GTH92001](#) [5GTH9202242](#) [6407-250V-25273P](#) [ADTSA62NV](#) [ADTSA62RV](#) [B3F-3123](#) [1977177-8](#) [1977266-1](#) [ADTSA63NV](#)
[ADTSM21NSVTR](#) [ADTSM25RVTR](#) [ADTSM32NVTR](#) [ADTSMW64RV](#) [FSMRA4JHA04](#) [GS4.70F300QP](#) [KSC241J SP DELTA LFS](#)
[3FTL600RAS](#) [3FTL640RAS](#) [Y96K132V0FPLFS](#) [5GTH9658222](#) [6407-250V-25343P](#) [ADTSM31NVTR](#) [2-1977120-7](#) [TSJW-5.2-260-TR](#)
[KMT011MNGJLHS](#) [B3WN6002S](#) [70-201.0](#) [ADTSG648NV](#) [ADTSM62KSVTR](#) [ADTSM648NV](#) [95C06E3RAT](#) [5GTH96561](#) [3ATH9Q](#)
[FSMRA8JHA04](#) [HARS0073](#) [Y33R411N9FPLFT](#) [Y31C01402FPLFS](#) [PTS645SK50SMTR92](#) [ADTSM32NVB](#) [KMS233GPWTLFG](#)
[Y78B64124FP](#) [Y96D113G0FP LFS](#) [Y33A812C5FP LFT](#) [Y56B2D120FP LFS](#) [PTS645 DVM83-BN125-2 LFS](#) [B3W 1000G](#) [KSC621G OL](#)
[LFS](#) [B3F 1002C](#) [B3F 0047H](#) [B3F 1000G](#)