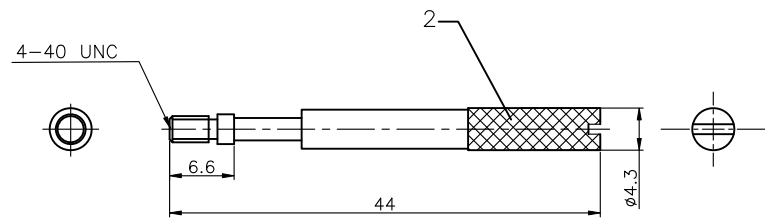
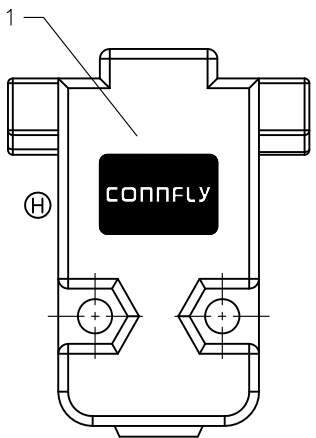
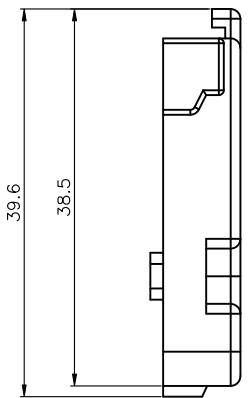


| BOM LIST |                |      |         |
|----------|----------------|------|---------|
| ITEM     | PART NAME      | Q'ty | NOTES   |
| 1        | PLASTIC HOOD   | 2    | SEE P/N |
| 2        | 2.1 LONG BOLT  | 2    | #4-40   |
|          | 2.2 SHORT BOLT | 2    | #4-40   |
| 3        | NUT            | 2    | M3      |
| 4        | LONG SCREW     | 2    | M3      |
| 5        | SMALL WASHER   | 2    |         |
| 6        | SHORT SCREW    | 2    | M3      |
| 7        | METAL WASHER   | 2    | M3      |



Long BOLT

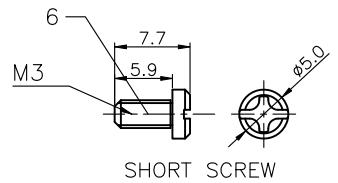
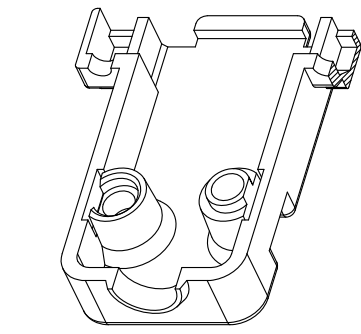
| REV. | DESCRIPTION     | DRAWN         | CHECKED | APPROVED      |
|------|-----------------|---------------|---------|---------------|
| A    | NEW RELEASE     | LJH 08/13/05' | ~       | LJC 08/13/05' |
| C    | 整理英制短螺丝尺寸       | YCH 07/18/08' | ~       | LJC 07/18/08' |
| D    | 增加“全包装”类型       | YCH 05/20/10' | ~       | LJC 05/20/10' |
| E    | 改M3*12的螺钉为M3*10 | YCH 08/30/10' | ~       | LJC 08/30/10' |
| F    | ADD P/N CODE    | LJC 12/24/13' | ~       | LJC 12/24/13' |
| J    | DRAWING UPDATE  | JLZ 05/19/16' | ~       |               |

NOTES:

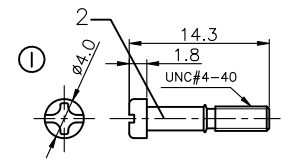
1. Hardwares are all Nickel plated.
2. PART NUMBER CODE:

DS1045 - 09 X X X X X - X

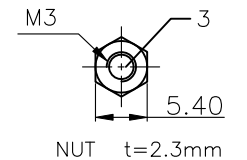
- Hood Materials (F)
- A: ABS
- B: Similar ABS
- Washer type
- 1: Metal
- Bolt type
- L: Long
- S: Short
- Packing type
- 1: Mix packing
- Q: Full packing
- Cover Material
- P: Plastic(ABS)
- Cover Color
- A: Gray
- B: Black
- V: Ivory
- Position
- 09: 9pin



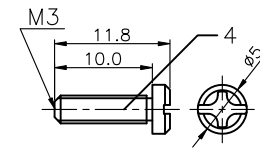
SHORT SCREW



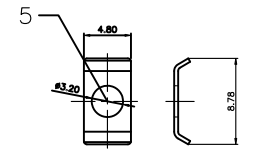
Short BOLT



NUT t=2.3mm



LONG SCREW




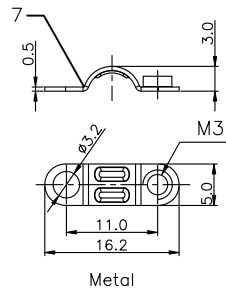
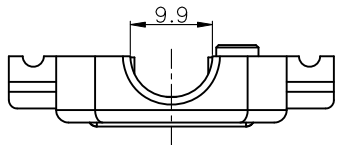
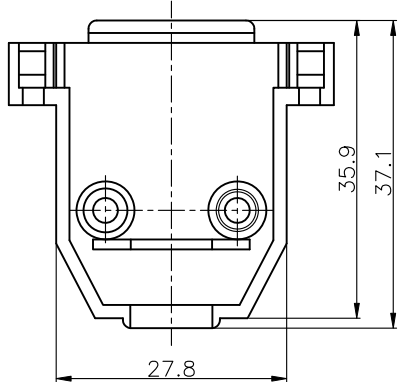
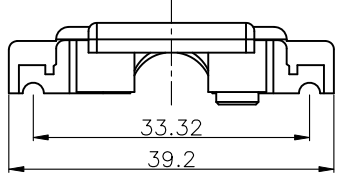
SMALL WASHER

| GENERAL TOLERANCE |       | ANGLE TOLERANCE |     |
|-------------------|-------|-----------------|-----|
| X.                | ±0.60 | X.              | ±5° |
| .X                | ±0.38 | .X              | ±3° |
| .XX               | ±0.25 | .XX             | ±2° |

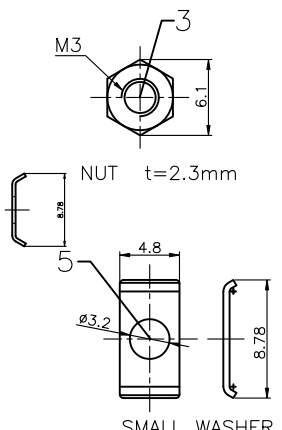
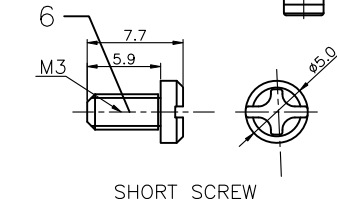
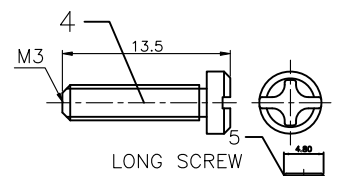
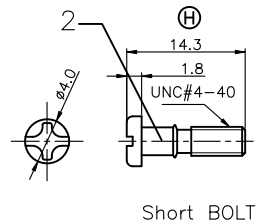
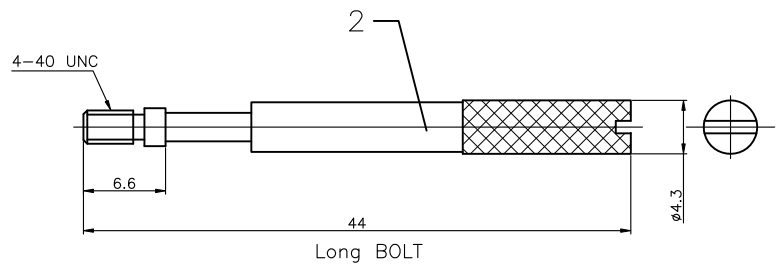
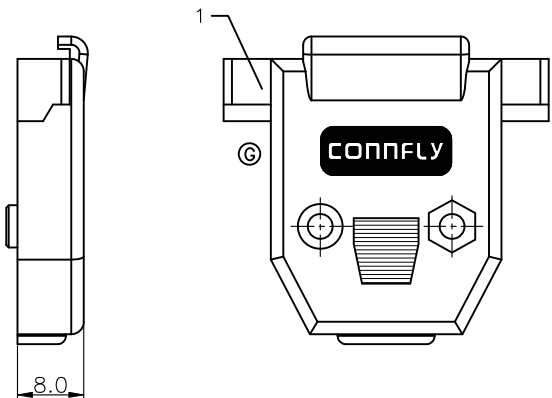
| PROJECTION | TITLE | D-SUB Plastic Hood 180°<br>9 Positions |               |
|------------|-------|--|---------------|
| UNITS      | mm    |  |               |
| SHEET SIZE | A4    | SERIES                                 | DS1045 SERIES |

| DRAWING TYPE | COSTOMER             |       |        |
|--------------|----------------------|-------|--------|
| SCALE        | 1:1                  | SHEET | 1 OF 1 |
| DRAWING NO.  | C-DS1045-09XXXXX-X-J |       |        |


**晨翔电子有限公司**  
**CONNFLY® CONNFLY ELECTRONIC CO., LTD**



| BOM LIST |                |      |         |
|----------|----------------|------|---------|
| ITEM     | PART NAME      | Q'ty | NOTES   |
| 1        | PLASTIC HOOD   | 2    | SEE P/N |
| 2        | 2.1 LONG BOLT  | 2    | #4-40   |
|          | 2.2 SHORT BOLT | 2    | #4-40   |
| 3        | NUT            | 2    | M3      |
| 4        | LONG SCREW     | 2    | M3      |
| 5        | SMALL WASHER   | 2    |         |
| 6        | SHORT SCREW    | 2    | M3      |
| 7        | METAL WASHER   | 2    | M3      |



| REV. | DESCRIPTION    | DRAWN         | CHECKED | APPROVED      |
|------|----------------|---------------|---------|---------------|
| A    | NEW RELEASE    | LJH 05/18/05' | ~       | LJC 05/18/05' |
| C    | 整理英制短螺丝尺寸      | YCH 07/18/08' | ~       | LJC 07/18/08' |
| D    | 增加“全包装”类型      | YCH 05/20/10' | ~       | LJC 05/20/10' |
| E    | ADD P/N CODE   | LJC 12/24/13' | ~       | LJC 12/24/13' |
| J    | DRAWING UPDATE | JLZ 05/19/16' | ~       |               |

NOTES:  
 1. Hardwares are all Nickel plated.  
 2. PART NUMBER CODE:  
 DS1045 - 15 X X X X X - X

Hood Materials (E)  
 A: ABS  
 B: Similar ABS

Washer type  
 1: Metal

Bolt type  
 L: Long  
 S: Short


Packing type  
 1: Mix packing  
 Q: Full packing

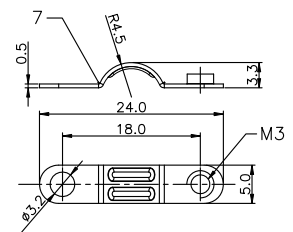
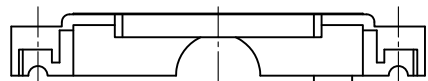
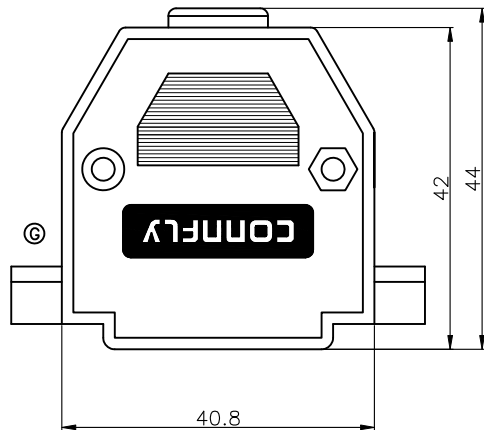
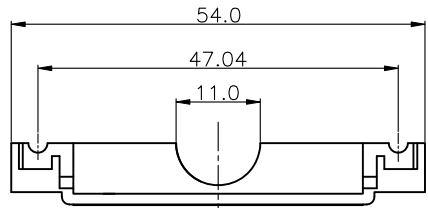
Cover Material  
 P: Plastic(ABS)  
 Cover Color  
 A: Gray  
 B: Black  
 V: Ivory  
 Position  
 15: 15pin

| GENERAL TOLERANCE | ANGLE TOLERANCE |
|-------------------|-----------------|
| X. ±0.60          | X. ±5°          |
| .X ±0.38          | .X ±3°          |
| .XX ±0.25         | .XX ±2°         |

| PROJECTION | TITLE | D-SUB Plastic Hood 180°<br>15 Positions |               |
|------------|-------|---|---------------|
| mm         |       | SHEET SIZE                              | DS1045 SERIES |

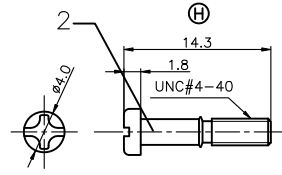
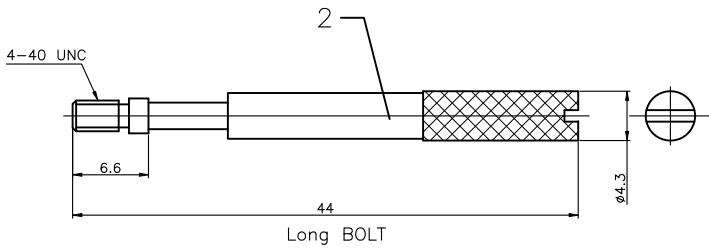
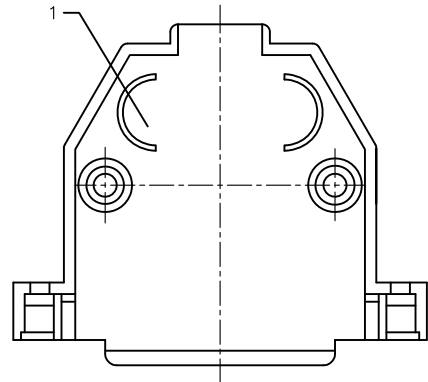
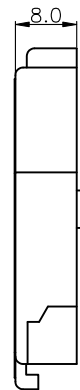
| DRAWING TYPE | CUSTOMER             |       |        |
|--------------|----------------------|-------|--------|
| SCALE        | 1:1                  | SHEET | 1 OF 1 |
| DRAWING NO.  | C-DS1045-15XXXXX-X-J |       |        |


**晨翔电子有限公司**  
**CONNFLY® CONNFLY ELECTRONIC CO., LTD**

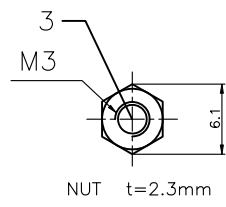


Metal

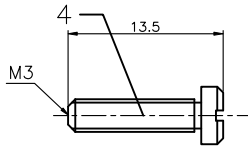
| BOM LIST |                |      |         |
|----------|----------------|------|---------|
| ITEM     | PART NAME      | Q'ty | NOTES   |
| 1        | PLASTIC HOOD   | 2    | SEE P/N |
| 2        | 2.1 LONG BOLT  | 2    | #4-40   |
|          | 2.2 SHORT BOLT | 2    | #4-40   |
| 3        | NUT            | 2    | M3      |
| 4        | LONG SCREW     | 2    | M3      |
| 5        | SMALL WASHER   | 2    |         |
| 6        | SHORT SCREW    | 2    | M3      |
| 7        | METAL WASHER   | 2    | M3      |



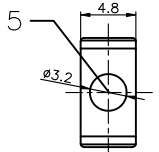
Short BOLT



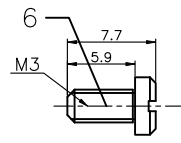
NUT t=2.3mm



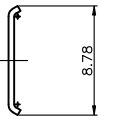
LONG SCREW



SMALL WASHER



SHORT SCREW



NOTES:  
 1. Hardwares are all Nickel plated.  
 2. PART NUMBER CODE:  
 DS1045 - 25 X X X X X - X

Hood Materials (E)  
 A: ABS  
 B: Similar ABS

Washer type  
 1: Metal

Bolt type  
 L: Long  
 S: Short

Packing type  
 1: Mix packing  
 Q: Full packing

Cover Material  
 P: Plastic(ABS)

Cover Color  
 A: Gray  
 B: Black  
 V: Ivory


Position  
 25: 25pin

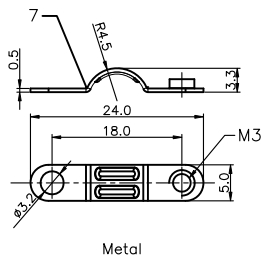
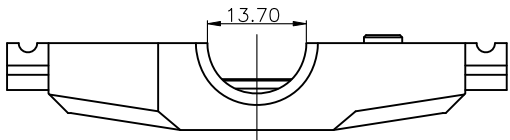
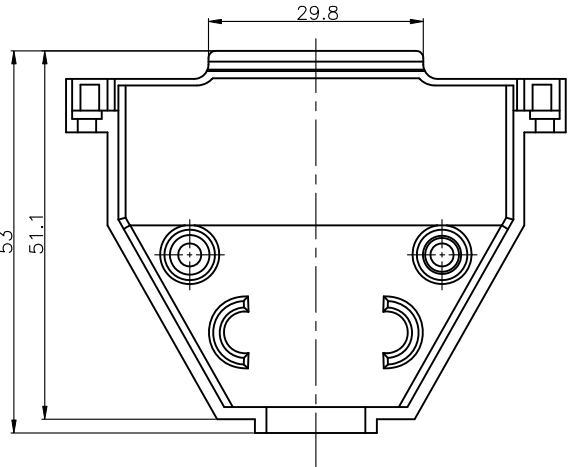
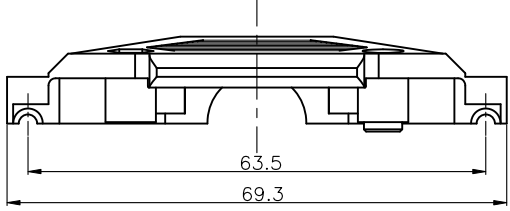
| REV. | DESCRIPTION    | DRAWN         | CHECKED | APPROVED      |
|------|----------------|---------------|---------|---------------|
| A    | NEW RELEASE    | LJH 10/26/05' | ~       | LJC 10/26/05' |
| C    | 整理英制短螺丝尺寸      | YCH 07/18/08' | ~       | LJC 07/18/08' |
| D    | 增加“全包装”类型      | YCH 05/20/10' | ~       | LJC 05/20/10' |
| E    | ADD P/N CODE   | LJC 12/24/13' | ~       | LJC 12/24/13' |
| J    | DRAWING UPDATE | JLZ 06/19/16' | ~       |               |

| GENERAL TOLERANCE |       | ANGLE TOLERANCE |     |
|-------------------|-------|-----------------|-----|
| X.                | ±0.60 | X.              | ±5° |
| .X                | ±0.38 | .X              | ±3° |
| .XX               | ±0.25 | .XX             | ±2° |

| PROJECTION | TITLE | D-SUB Plastic Hood 180°<br>25 Positions |               |
|------------|-------|---|---------------|
| UNITS      | mm    |   |               |
| SHEET SIZE | A4    | SERIES                                  | DS1045 SERIES |

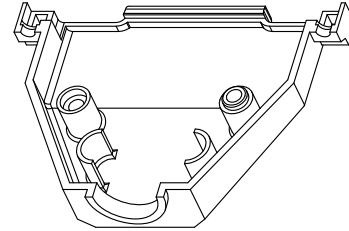
| DRAWING TYPE | COSTOMER             |       |        |
|--------------|----------------------|-------|--------|
| SCALE        | 1:1                  | SHEET | 1 OF 1 |
| DRAWING NO.  | C-DS1045-25XXXXX-X-J |       |        |


**晨翔电子有限公司**  
**CONNFLY® CONNFLY ELECTRONIC CO., LTD**



| BOM LIST |              |      |         |
|----------|--------------|------|---------|
| ITEM     | PART NAME    | Q'ty | NOTES   |
| 1        | PLASTIC HOOD | 2    | SEE P/N |
| 2        | LONG BOLT    | 2    | #4-40   |
|          | SHORT BOLT   | 2    | #4-40   |
| 3        | NUT          | 2    | M3      |
| 4        | LONG SCREW   | 2    | M3      |
| 5        | SMALL WASHER | 2    |         |
| 6        | SHORT SCREW  | 2    | M3      |
| 7        | METAL WASHER | 2    | M3      |

| REV. | DESCRIPTION    | DRAWN         | CHECKED | APPROVED      |
|------|----------------|---------------|---------|---------------|
| A    | NEW RELEASE    | LJH 10/26/05' | ~       | LJC 10/26/05' |
| C    | 整理英制短螺丝尺寸      | YCH 07/18/08' | ~       | LJC 07/18/08' |
| D    | 增加“全包装”类型      | YCH 05/20/10' | ~       | LJC 05/20/10' |
| E    | ADD P/N CODE   | LJC 12/24/13' | ~       | LJC 12/24/13' |
| J    | DRAWING UPDATE | JLZ 05/19/16' | ~       |               |



NOTES:  
 1. Hardwares are all Nickel plated.  
 2. PART NUMBER CODE:  
 DS1045 - 37 X X X X X X - X

Hood Materials  
 A: ABS  
 B: Similar ABS

Washer type  
 1: Metal

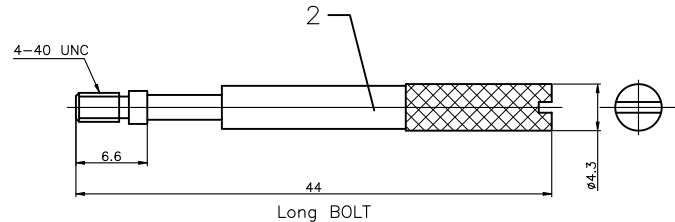
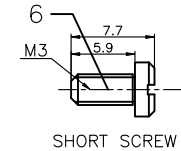
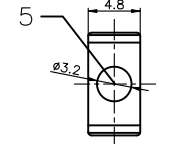
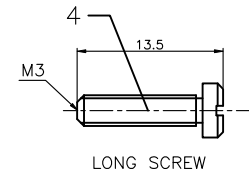
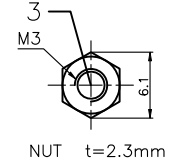
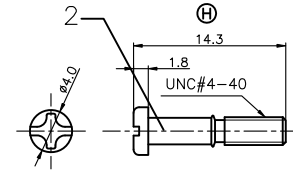
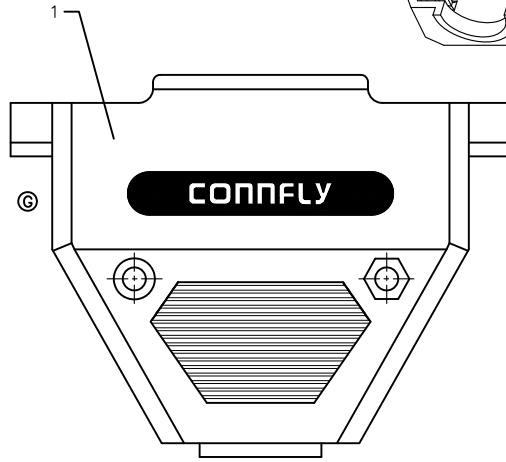
Bolt type  
 L: Long  
 S: Short

Packing type  
 1: Mix packing  
 Q: Full packing

Cover Material  
 P: Plastic(ABS)

Cover Color  
 A: Gray  
 B: Black  
 V: Ivory

Position  
 37: 37pin



| GENERAL TOLERANCE | ANGLE TOLERANCE |
|-------------------|-----------------|
| X. ±0.60          | X. ±5°          |
| .X ±0.38          | .X ±3°          |
| .XX ±0.25         | .XX ±2°         |

| PROJECTION | TITLE                                   |
|------------|---|
| UNITS      | D-SUB Plastic Hood 180°<br>37 Positions |
| SHEET SIZE | SERIES DS1045 SERIES                    |

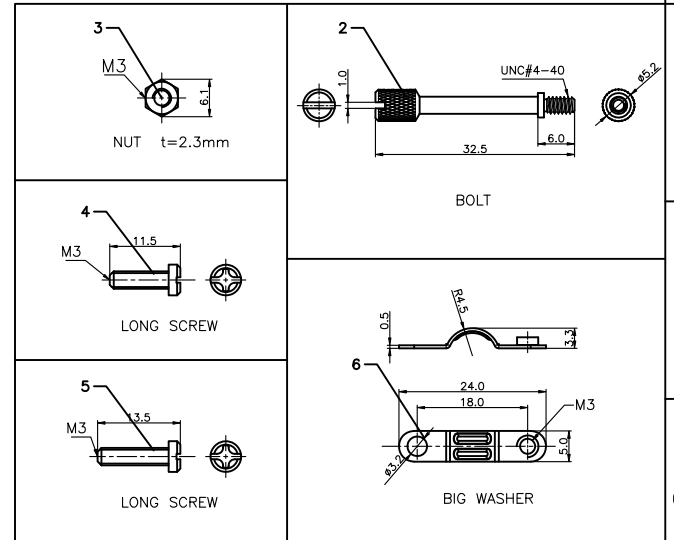
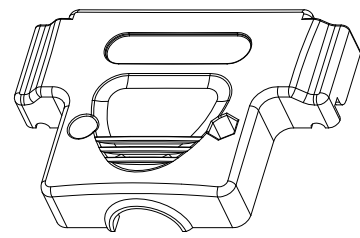
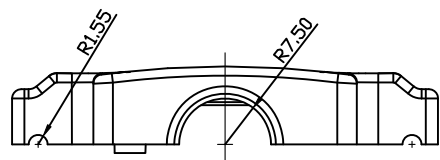
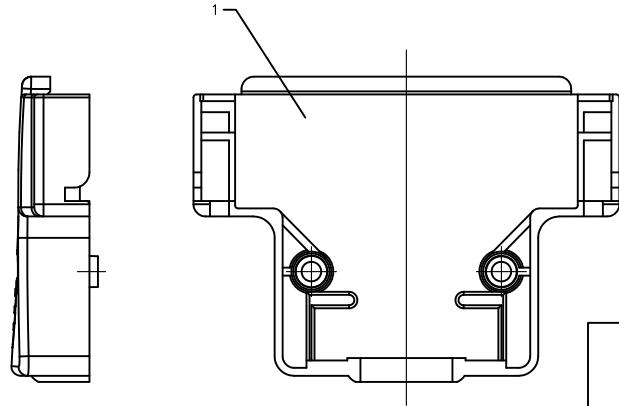
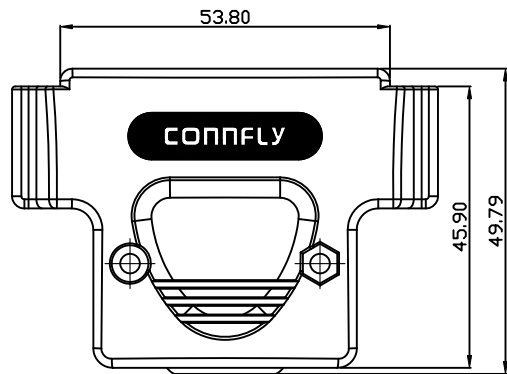
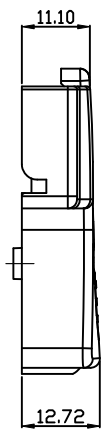
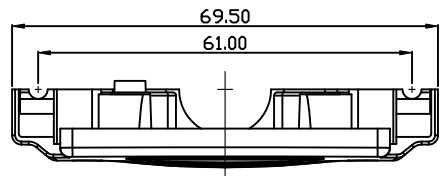
| DRAWING TYPE | CUSTOMER             |
|--------------|----------------------|
| SCALE        | 1:1 SHEET 1 OF 1     |
| DRAWING NO.  | C-DS1045-37XXXXX-X-J |

晨翔电子有限公司  
**CONFLY® CONFLY ELECTRONIC CO., LTD**

| REV. | DESCRIPTION     | DRAWN         | CHECKED | APPROVED      |
|------|-----------------|---------------|---------|---------------|
| A    | NEW RELEASE     | YCH 05/24/11' | ~       | LJC 05/24/11' |
| B    | ADD P/N CODE    | LJC 12/24/13' | ~       | LJC 12/24/13' |
| C    | Arrange Drawing | JLZ 10/09/14' | ~       | LJC 10/09/14' |
| J    | DRAWING UPDATE  | JLZ 05/19/16' | ~       |               |

NOTES:  
 1. Hardware are all Nickel plated.  
 2. PART NUMBER CODE:  
 DS1045 - 50 X X X - X

- Hood Materials®
  - A: ABS
  - B: Similar ABS
- Packing type
  - 1: Mix packing
- Cover Color
  - A: Gray
  - B: Black
- Cover Material
  - P: Plastic(ABS)
- Position
  - 50: 50pin



| BOM LIST |              |      |         |
|----------|--------------|------|---------|
| ITEM     | PART NAME    | Q'ty | NOTES   |
| 1        | PLASTIC HOOD | 2    | SEE P/N |
| 2        | BOLT         | 2    | #4-40   |
| 3        | NUT          | 2    | M3      |
| 4        | M3*10 SCREW  | 2    | M3      |
| 5        | M3*12 SCREW  | 2    | M3      |
| 6        | BIG WASHER   | 2    | M3      |

| GENERAL TOLERANCE |       | ANGLE TOLERANCE |     |
|-------------------|-------|-----------------|-----|
| X.                | ±0.60 | X.              | ±5° |
| .X                | ±0.38 | .X              | ±3° |
| .XX               | ±0.25 | .XX             | ±2° |

|            |    |            |   |
|------------|----|------------|---|
| PROJECTION |    | TITLE      | D-SUB Plastic Hood 180°<br>50 Positions |
| UNITS      | mm | SHEET SIZE | A4                                      |
| SHEET SIZE | A4 | SERIES     | DS1045 SERIES                           |

|              |                    |       |        |
|--------------|--------------------|-------|--------|
| DRAWING TYPE | CUSTOMER           |       |        |
| SCALE        | 1:1                | SHEET | 1 OF 1 |
| DRAWING NO.  | C-DS1045-50XXX-X-J |       |        |

晨翔电子有限公司  
**CONFLY® CONFLY ELECTRONIC CO., LTD**

## X-ON Electronics

Largest Supplier of Electrical and Electronic Components

*Click to view similar products for [D-Sub Standard Connectors](#) category:*

*Click to view products by [Connfly](#) manufacturer:*

Other Similar products are found below :

[56F711-015](#) [LV242999-142T12](#) [015-0339-000](#) [015-0341-000](#) [015-0349-000](#) [015-0350-000](#) [015-0372-008](#) [015-8544-011](#) [015-8755-001](#)  
[017041-0005](#) [020419-0104](#) [012-0467-000](#) [012-9507-114](#) [020745-0008](#) [609-25P](#) [609-9P](#) [M24308/2-23Z](#) [M24308/2-36Z](#) [M24308315F](#)  
[CT0M22-23SS](#) [CT0P14S-5SXS](#) [CT0P22-14PS](#) [CT1E20-19SS](#) [CT2-10SL-3SC](#) [CT2-14S-2PCA34](#) [CT2-16S-17PS](#) [CT2-18-10PS-FMLB-D](#)  
[CT2-18-11PCAU](#) [CT2-18-1PSAUA34](#) [CT2-22-19SC](#) [CT2-22-19SS-A206](#) [CT2-24-2PS](#) [CT2-28-12SC](#) [CT2-28-12SSA232](#) [CT6-10SL-3SC](#)  
[CT6-10SL-4SC](#) [CT6-14S-2SC](#) [CT6-16-12SC](#) [CT6-18-10PSA206](#) [CT6-18-10PSA232](#) [CT6-18-10SSF127A206](#) [CT6-22-10PS](#) [CT6-28-22SS](#)  
[CT6E14S-2S0](#) [CT6E14S-2SC-A206](#) [CT6E14S-5SC](#) [CT6E14SA7SC](#) [CT6E20-14SS](#) [CT6E22-10PS](#) [CT6E22-14PC](#)