


晨翔电子有限公司
CONNFLY CONNFLY ELECTRONIC CO. LTD

UL 2651 PITCH 1.00mm FLAT CABLE
 SERIES DS1057-01
 SHEET SIZE A4
 UNITS mm
 PROJECTION  TITLE

DRAWING NO. C-DS1057-01-XXXXX		SCALE 1:1		DRAWING TYPE CUSTOMER	
SHEET 1 OF 1		SHEET 1 OF 1		GENERAL TOLERANCE	
±0.60		±0.38		±0.25	
X		.X		.XX	
±0.5		±0.3		±0.2	
X		.X		.XX	
±0.2		±0.1		±0.05	
X		.X		.XX	

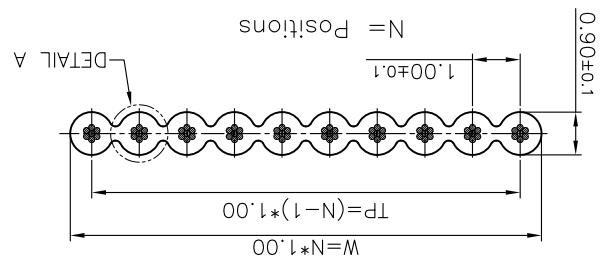
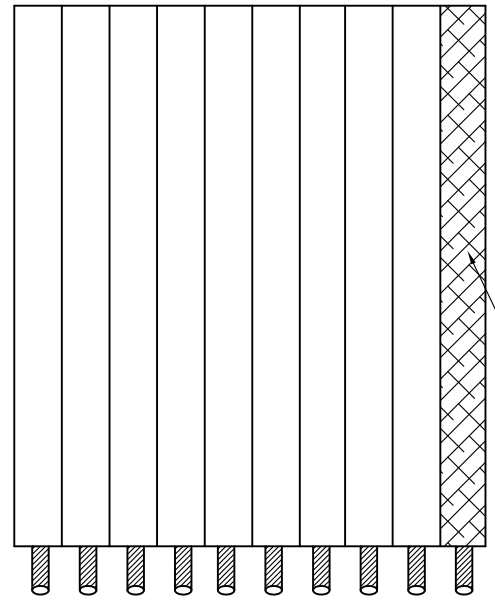
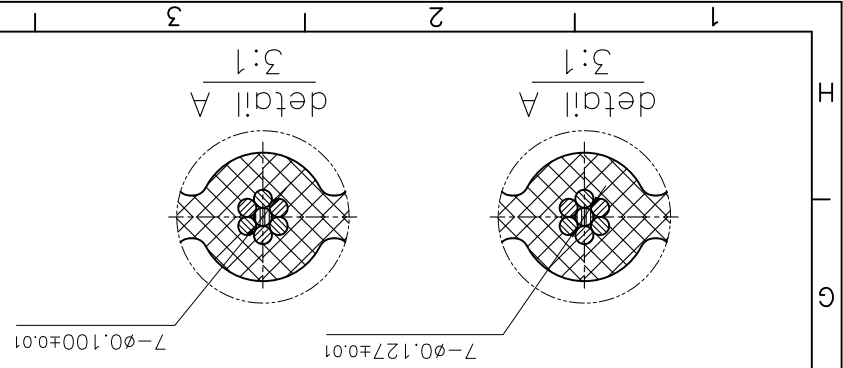
Number	Dimensions		Max. conductor resistance DC 20°C
	TP(mm)	W(mm)	
10	9.00	10.00	±0.30
14	13.00	14.00	±0.30
16	15.00	16.00	±0.30
20	19.00	20.00	±0.30
24	23.00	24.00	±0.30
26	25.00	26.00	±0.30
30	29.00	30.00	±0.30
34	33.00	34.00	±0.40
40	39.00	40.00	±0.40
50	49.00	50.00	±0.40
60	59.00	60.00	±0.40
64	63.00	64.00	±0.40

Max. conductor resistance DC 20°C
 TP(mm) Tolerance
 W(mm) Tolerance
 Dimensions
 $\phi 0.127 < 0.237$
 $\phi 0.100 < 0.397$

4. Product Number Code DS1057-01 - X X X X X X X X X X
 Packing Specifications
 30.5: 30.5m/reel
 76.5: 76.5m/reel
 Edge mark
 R: Red mark
 F: Flower mark
 Wire diameter
 1: $\phi 0.100$ (30AWG)
 2: $\phi 0.127$ (28AWG)
 Wire AWG
 28: 28AWG
 30: 30AWG
 Cable color
 A: Gray
 No. Of positions
 10: 10pin
 64: 64pin

1. Insulation material: PVC
 Color: Grey
 2. SPECIFICATION
 . Rating: 300V
 . Conductor Size: 28AWG Or 30AWG
 . Insulation resistance: 100M Ω /km min.
 3. APPLICATION
 . Internal wiring of computers, electronic exchanges, measurement control devices, business machines, communication devices, and other electronic equipment.

REV.	A	DESCRIPTION	NEW RELEASE	YCH 08/18/07	DRAWN	CHECKED	APPROVED



NOTES:

X-ON Electronics

Largest Supplier of Electrical and Electronic Components

Click to view similar products for [Ribbon Cables / IDC Cables](#) category:

Click to view products by [Connfly](#) manufacturer:

Other Similar products are found below :

[FSK-12A Ribbon Cable, 6 Pin, 500mm](#) [AWG28-10G EHV3C EHV4C EHV5C](#) [cab-LVDV-PWR-10-15 FSP-25A Ribbon Cable, 4 Pin, 350mm](#)
[Ribbon Cable, 6 Pin, 300mm](#) [cab-LVDV-DAT-34-15](#) [49635-C62-S2](#) [1-3636-600-5204](#) [92315-1408](#) [100063-0094](#) [100063-0106](#) [100063-0102](#)
[100063-0104](#) [MMSD-02-20C-F-15.00-S-K](#) [100063-0099](#) [100063-0105](#) [100063-0095](#) [100063-0103](#) [100063-0093](#) [100063-0091](#) [2200000068](#)
[100063-0092](#) [100063-0101](#) [100063-0100](#) [100063-0097](#) [TFSDT-08-28-H-15.00-S](#) [S1SD-02-30-GF-09.00-L](#) [MMSD-02-22C-F-15.00-S-K](#)
[S1SS-02-28C-GF-02.00-L](#) [S1SDT-02-28-GF-03.00-L](#) [2-1589735-3](#) [JSM015PP2DCC23N](#) [92301-0283](#) [TCSD-22-D-26.00-01](#) [S1SST-07-30-](#)
[GF-06.00-L](#) [T2SD-20-24-L-07.87-TR-NUS](#) [DS1057-01-44A282R-30.5](#) [FFSD-06-S-17.00-01-N](#) [IDSS-03-D-20.00-T](#) [TCMD-17-S-36.00-01-](#)
[SR](#) [92301-0718](#) [839023](#) [490107670612S](#) [MMSDT-06-20-S-05.5-D-K-LDX](#) [IDD-04-G](#)