

REV.	DESCRIPTION	DRAWN	CHECKED	APPROVED
A	NEW RELEASE	LJC 01/11/09		

NOTES:

- SPECIFICATION:
 - Current Rating: 1.5A.
 - Insulation Resistance: 1000MΩ min.
 - Dielectric Withstanding: 500V for One minute.
 - Contact resistance: 50mΩ max.
 - Operating Temperature: -40°C to +105°C

2. MATERIALS

- Housing: Thermoplastic(UL94 V-0).
- Contact: Copper alloy.
- Shell: Steel.

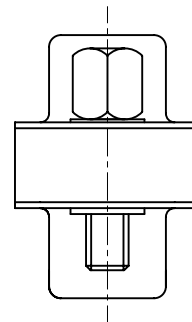
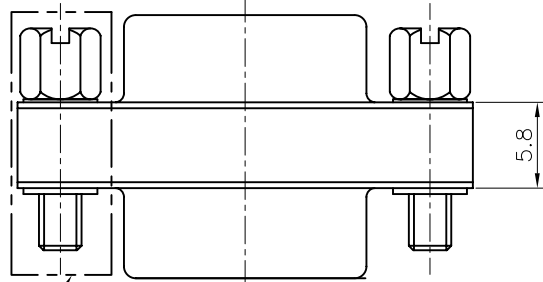
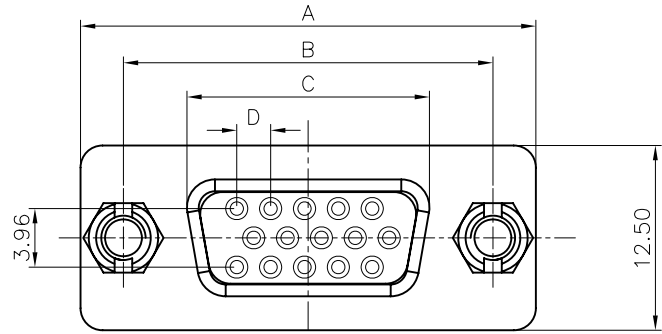
3. Product Number code:

DS1082-03 - X X X X X

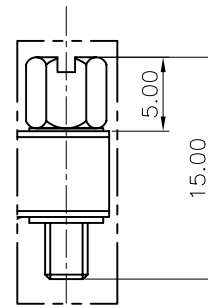
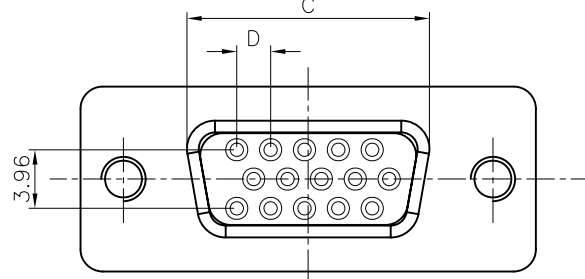
- Screw type
- CC: CC type
- DS: DS type
- Shell plating
- N: All Nickel
- 6: All Tin
- Housing color
- B: black
- L: blue
- Contact plating
- 8: Full gold flash

Connector type

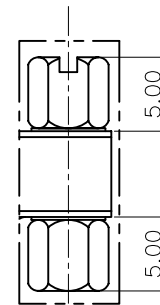
- 15F: 15Female & 15Female
- 15M: 15Mlae & 15Female
- 15P: 15Mlae & 15Male
- 26F: 26Female & 26Female
- 26M: 26Male & 26Female
- 26P: 26Male & 26Male
- 44F: 44Female & 44Female
- 44M: 44Male & 44Female
- 44P: 44Male & 44Male
- 62F: 62Female & 62Female
- 62M: 62Male & 62Female
- 62P: 62Male & 62Male



Screw type



CC TYPE



DS TYPE

Dimension

Position	A±0.2	B±0.2	C±0.2		D±0.2
			FEMALE	MALE	
15	30.80	24.99	16.33	17.90	2.29
26	39.14	33.32	24.66	26.50	2.29
44	53.04	47.04	38.38	40.00	2.29
62	69.32	63.50	54.84	56.50	2.41

GENERAL TOLERANCE		ANGLE TOLERANCE	
X.	±0.60	X.	±5°
.X	±0.38	.X	±3°
.XX	±0.25	.XX	±2°

PROJECTION		TITLE	H.D-SUB ADAPTOR	
UNITS	mm	SHEET	A4	
SHEET SIZE	A4	SERIES	DS1082-03	SERIES

DRAWING TYPE	CUSTOMER		
SCALE	1:1	SHEET	1 OF 1
DRAWING NO.	C-DS1082-03-XXXXX		

晨翔电子有限公司
CONNFLY CONNFLY ELECTRONIC CO. LTD

X-ON Electronics

Largest Supplier of Electrical and Electronic Components

Click to view similar products for [Connfly](#) manufacturer:

Other Similar products are found below :

[DS1001-01-06BT1NSF6X](#) [DS1001-01-06BT1NSF6X-JKB](#) [DS1001-01-06BT1NST1X-JKB](#) [DS1001-01-08BT1NSF6S](#)
[DS1001-01-08BT1NSF6X-JKB](#) [DS1001-01-14BT1NSF6X](#) [DS1001-01-14BT1NSF6X-JKB](#) [DS1001-01-16BT1NSF6S](#)
[DS1001-01-16BT1NSF6X-JKB](#) [DS1001-01-18BT1NSF6S](#) [DS1001-01-20BT1NSF6S](#) [DS1001-01-20BT1NSF6S-JKB](#)
[DS1001-01-24BT1NSF6S](#) [DS1001-01-24BT1WSF6S](#) [DS1001-01-28BT1NSF6S](#) [DS1001-01-28BT1NSF6S-JKB](#) [DS1001-01-28BT1WSF6S](#)
[DS1001-01-28BT1WSF6S-JKB](#) [DS1001-01-32BT1WSF6S](#) [DS1001-01-32BT1WSF6S-JKB](#) [DS1001-01-40BT1WSF6S](#)
[DS1001-01-40BT1WSF6S-JKB](#) [DS1001-02-08N13](#) [DS1001-02-14N13](#) [DS1001-02-16N13](#) [DS1001-02-28W13](#) [DS1001-02-32W13](#)
[DS1001-02-40W13](#) [DS1002-01-1*10R13](#) [DS1002-01-1*10V13](#) [DS1002-01-1*13V13](#) [DS1002-01-1*14V13](#) [DS1002-01-1*16R13](#) [DS1002-](#)
[01-1*16S13](#) [DS1002-01-1*16V13](#) [DS1002-01-1*1R13](#) [DS1002-01-1*1V13](#) [DS1002-01-1*20V13](#) [DS1002-01-1*2R13](#) [DS1002-01-1*2V13](#)
[DS1002-01-1*32V13](#) [DS1002-01-1*36V13](#) [DS1002-01-1*3V13](#) [DS1002-01-1*40V13](#) [DS1002-01-1*4R13](#) [DS1002-01-1*4S13](#) [DS1002-01-](#)
[1*4V13](#) [DS1002-01-1*50V13](#) [DS1002-01-1*5S13](#) [DS1002-01-1*5V13](#)