

High Ripple Wide Temperature Range

Type 101X capacitors are designed for military power supply filters. They feature wide operating temperature ranges and ultra-low ESR. Type 101X capacitors are the commercial equivalent of MIL-C-39018/04, 06, 10. Use these capacitors in tough applications needing very low ESR, high ripple current and a wide operating temperature.

Capacitance: 290µF to 1.1F

Voltage: 6.3 to 250Vdc

Operating Temperature: -55°C to +105°C

Life Test: 2,000 hours @ +105°C; 10,000 hours @ +85°C

Ripple Test: 2,000 hours at full load @ +85°C

Shelf Test: 500 hours @ +105°C

DCL: ≤ 1.5√CV µA (4mA maximum)

Cap. µF	Catalog Number	ESR Max mΩ		Ripple A @85°C		Nominal Size (in.) D x L
		120 Hz	20kHz	120Hz	20kHz	

Cap. µF	Catalog Number	ESR Max mΩ		Ripple A @85°C		Nominal Size (in.) D x L
		120 Hz	20kHz	120Hz	20kHz	

6.3 Vdc - 4 Vdc Surge

31,000	101X313U6R3AK2B	44.4	28.0	7.9	11.7	1 3/8 X 1 5/8
52,000	101X523U6R3AA2B	28.0	18.1	10.2	14.8	1 3/8 X 2 1/8
73,000	101X733U6R3AH2B	20.4	13.3	12.4	17.9	1 3/8 X 2 5/8
94,000	101X943U6R3AB2B	16.2	10.7	14.3	19.9	1 3/8 X 3 1/8
140,000	101X144U6R3AC2B	11.7	8.0	16.7	22.4	1 3/8 X 4 1/8
190,000	101X194U6R3BB2B	9.3	6.6	22.3	28.0	2 X 3 1/8
200,000	101X204U6R3AF2B	8.9	6.3	18.3	23.3	1 3/8 X 5 5/8
240,000	101X244U6R3EC2B	8.6	6.9	20.5	24.0	1 3/4 X 4 1/8
290,000	101X294U6R3BC2B	6.5	4.7	27.1	33.6	2 X 4 1/8
430,000	101X434U6R3BF2B	4.8	3.5	31.6	37.4	2 X 5 5/8
470,000	101X474U6R3CC2B	4.6	3.6	36.0	41.6	2 1/2 X 4 1/8
670,000	101X674U6R3DC2B	4.4	3.7	38.6	41.8	3 X 4 1/8
710,000	101X714U6R3CF2B	3.3	2.6	42.2	48.1	2 1/2 X 5 5/8
890,000	101X894U6R3DE2B	3.5	3.0	42.5	46.0	3 X 5 1/8
1,000,000	101X105U6R3DF2B	3.3	2.9	45.9	49.3	3 X 5 5/8
1,100,000	101X115U6R3DP2B	3.2	2.8	46.6	50.0	3 X 5 3/4

10 Vdc - 10 Vdc Surge

28,000	101X283U7R5AK2B	45.5	29.0	7.8	11.5	1 3/8 X 1 5/8
47,000	101X473U7R5AA2B	28.7	18.8	10.0	14.6	1 3/8 X 2 1/8
66,000	101X663U7R5AH2B	20.9	13.8	12.3	17.6	1 3/8 X 2 5/8
85,000	101X853U7R5AB2B	16.6	11.1	14.2	19.6	1 3/8 X 3 1/8
120,000	101X124U7R5AC2B	12.0	8.2	16.5	22.0	1 3/8 X 4 1/8
170,000	101X174U7R5BB2B	9.4	6.7	22.0	27.7	2 X 3 1/8
180,000	101X184U7R5AF2B	9.1	6.4	18.2	23.0	1 3/8 X 5 5/8
220,000	101X224U7R5EC2B	8.8	7.0	20.4	23.8	1 3/4 X 4 1/8
260,000	101X264U7R5BC2B	6.6	4.8	26.9	33.1	2 X 4 1/8
390,000	101X394U7R5BF2B	4.9	3.6	31.3	37.0	2 X 5 5/8
430,000	101X434U7R5CC2B	4.7	3.6	35.7	41.1	2 1/2 X 4 1/8
610,000	101X614U7R5DC2B	4.5	3.8	38.4	41.5	3 X 4 1/8
640,000	101X644U7R5CF2B	3.4	2.7	41.9	47.7	2 1/2 X 5 5/8
810,000	101X814U7R5DE2B	3.6	3.1	42.2	45.6	3 X 5 1/8
910,000	101X914U7R5DF2B	3.3	2.9	45.7	49.0	3 X 5 5/8
960,000	101X964U7R5DP2B	3.2	2.8	46.3	49.6	3 X 5 3/4

15 Vdc - 15 Vdc Surge

25,000	101X253U010AK2B	45.5	29.0	7.8	11.5	1 3/8 X 1 5/8
41,000	101X413U010AA2B	28.7	18.8	10.0	14.6	1 3/8 X 2 1/8
58,000	101X583U010AH2B	20.9	13.8	12.3	17.6	1 3/8 X 2 5/8
74,000	101X743U010AB2B	16.6	11.1	14.2	19.6	1 3/8 X 3 1/8

15 Vdc - 15 Vdc Surge

110,000	101X114U010AC2B	12.0	8.2	16.5	22.0	1 3/8 X 4 1/8
150,000	101X154U010BB2B	9.4	6.7	22.0	27.7	2 X 3 1/8
160,000	101X164U010AF2B	9.1	6.4	18.2	23.0	1 3/8 X 5 5/8
190,000	101X194U010EC2B	8.8	7.0	20.4	23.8	1 3/4 X 4 1/8
230,000	101X234U010BC2B	6.6	4.8	26.9	33.1	2 X 4 1/8
340,000	101X344U010BF2B	4.9	3.6	31.3	37.0	2 X 5 5/8
370,000	101X374U010CC2B	4.7	3.6	35.7	41.1	2 1/2 X 4 1/8
530,000	101X534U010DC2B	4.5	3.8	38.4	41.5	3 X 4 1/8
560,000	101X564U010CF2B	3.4	2.7	41.9	47.7	2 1/2 X 5 5/8
710,000	101X714U010DE2B	3.6	3.1	42.2	45.6	3 X 5 1/8
800,000	101X804U010DF2B	3.3	2.4	45.7	49.0	3 X 5 5/8
840,000	101X844U010DP2B	3.2	2.8	46.3	49.6	3 X 5 3/4

16 Vdc - 20 Vdc Surge

16,000	101X163U016AK2B	46.5	29.0	7.6	11.5	1 3/8 X 1 5/8
27,000	101X273U016AA2B	28.7	18.8	9.8	14.6	1 3/8 X 2 1/8
38,000	101X383U016AH2B	20.9	13.8	12.1	17.6	1 3/8 X 2 5/8
49,000	101X493U016AB2B	16.6	11.1	13.9	19.6	1 3/8 X 3 1/8
71,000	101X713U016AC2B	12.0	8.2	16.3	22.0	1 3/8 X 4 1/8
100,000	101X104U016AF2B	9.1	6.4	19.0	23.0	1 3/8 X 5 5/8
100,000	101X103U016BB2B	9.4	6.7	21.7	25.7	2 X 3 1/8
130,000	101X134U016EC2B	8.8	7.0	20.7	23.8	1 3/4 X 4 1/8
150,000	101X154U016BC2B	6.6	4.8	26.7	35.1	2 X 4 1/8
220,000	101X224U016BF2B	4.9	3.6	31.3	37.0	2 X 5 5/8
250,000	101X254U016CC2B	4.7	3.5	35.7	41.8	2 1/2 X 4 1/8
350,000	101X354U016DC2B	4.7	3.9	37.7	41.3	3 X 4 1/8
370,000	101X374U016CF2B	3.4	2.6	43.7	50.1	2 1/2 X 5 5/8
470,000	101X474U016DE2B	3.4	3.2	41.5	44.8	3 X 5 1/8
520,000	101X524U016DF2B	3.7	2.9	45.2	49.0	3 X 5 5/8
550,000	101X554U016DP2B	3.3	2.8	45.7	49.6	3 X 5 3/4

20 Vdc - 20 Vdc Surge

13,000	101X133U020AK2B	46.5	29.0	7.6	11.5	1 3/8 X 1 5/8
21,000	101X213U020AA2B	28.7	18.8	9.8	14.6	1 3/8 X 2 1/8
29,000	101X293U020AH2B	20.9	13.8	12.1	17.6	1 3/8 X 2 5/8
38,000	101X383U020AB2B	16.6	11.1	13.9	19.6	1 3/8 X 3 1/8
55,000	101X553U020AC2B	12.0	8.2	16.3	22.0	1 3/8 X 4 1/8
77,000	101X773U020BB2B	9.4	6.7	21.7	25.7	2 X 3 1/8
80,000	101X803U020AF2B	9.1	6.4	19.0	23.0	1 3/8 X 5 5/8
98,000	101X983U020EC2B	8.8	7.0	20.7	23.8	1 3/4 X 4 1/8
120,000	101X124U020BC2B	6.6	4.8	26.7	35.1	2 X 4 1/8
170,000	101X174U020BF2B	4.9	3.6	31.3	37.0	2 X 5 5/8
190,000	101X194U020CC2B	4.7	3.5	35.7	41.8	2 1/2 X 4 1/8
280,000	101X284U020CF2B	3.4	2.6	43.7	50.1	2 1/2 X 5 5/8
310,000	101X314U020DD2B	4.1	3.5	40.4	43.6	3 X 4 5/8
360,000	101X364U020DE2B	3.7	3.2	41.5	44.8	3 X 5 1/8
400,000	101X404U020DF2B	3.4	2.9	45.2	49.0	3 X 5 5/8
430,000	101X434U020DP2B	3.3	2.8	45.7	49.6	3 X 5 3/4

Cap. μ F	Catalog Number	ESR Max $m\Omega$		Ripple A @85°C		Nominal Size (in.) D x L
		120 Hz	20kHz	120Hz	20kHz	

Cap. μ F	Catalog Number	ESR Max $m\Omega$		Ripple A @85°C		Nominal Size (in.) D x L
		120 Hz	20kHz	120Hz	20kHz	

105°C - 100V Surge (continued)

105°C - 15V/100 Surge (continued)

9,900	101X992U025AK2B	46.5	29.0	7.5	11.4	1 3/8 X 1 5/8
16,000	101X163U025AA2B	29.7	19.3	9.7	14.4	1 3/8 X 2 1/8
23,000	101X233U025AH2B	21.3	14.0	12.0	17.5	1 3/8 X 2 5/8
30,000	101X303U025AB2B	17.2	11.1	13.7	19.6	1 3/8 X 3 1/8
43,000	101X433U025AC2B	12.2	8.4	16.2	21.9	1 3/8 X 4 1/8
60,000	101X603U025BB2B	9.4	6.7	21.7	27.4	2 X 3 1/8
63,000	101X633U025AF2B	9.4	6.5	18.7	22.8	1 3/8 X 5 5/8
77,000	101X773U025EC2B	9.7	7.1	19.8	23.7	1 3/4 X 4 1/8
90,000	101X903U025BC2B	6.6	4.8	26.7	32.9	2 X 4 1/8
140,000	101X144U025BF2B	4.9	3.6	31.3	36.8	2 X 5 5/8
150,000	101X154U025CC2B	4.9	3.7	35.0	40.7	2 1/2 X 4 1/8
210,000	101X214U025DC2B	4.8	4.1	37.2	40.0	3 X 4 1/8
220,000	101X224U025CF2B	3.5	2.7	42.9	49.3	2 1/2 X 5 5/8
280,000	101X284U025DF2B	3.8	3.3	41.0	44.3	3 X 5 1/8
320,000	101X324U025DF2B	3.5	3.0	44.7	48.4	3 X 5 5/8
330,000	101X334U025DP2B	3.4	2.9	45.1	49.0	3 X 5 7/8

57,000	101X573U050CC2B	5.7	4.5	31.4	35.3	2 1/2 X 4 1/8
81,000	101X813U050DC2B	6.1	5.3	32.2	34.4	3 X 4 1/8
86,000	101X863U050CF2B	4.2	3.3	36.8	41.4	2 1/2 X 5 5/8
110,000	101X114U050DE2B	4.8	4.1	37.0	39.4	3 X 5 1/8
120,000	101X124U050DF2B	4.4	3.8	38.7	41.0	3 X 5 5/8
130,000	101X134U050DP2B	4.2	3.7	39.3	41.5	3 X 5 7/8

105°C - 35 Volt Surge

2,700	101X272U063AK2B	64.1	31.8	6.1	9.6	1 3/8 X 1 5/8
4,500	101X452U063AA2B	39.7	21.4	8.0	12.4	1 3/8 X 2 1/8
6,300	101X632U063AH2B	28.8	15.7	10.2	14.8	1 3/8 X 2 5/8
8,200	101X822U063AB2B	22.0	12.6	12.1	17.0	1 3/8 X 3 1/8
12,000	101X123U063AC2B	14.9	9.3	14.1	19.4	1 3/8 X 4 1/8
17,000	101X173U063AF2B	11.1	7.1	16.1	20.8	1 3/8 X 5 5/8
17,000	101X173U063BB2B	12.2	8.0	19.0	23.3	2 X 3 1/8
21,000	101X213U063EC2B	11.7	8.3	18.0	22.0	1 3/4 X 4 1/8
25,000	101X253U063BC2B	8.5	5.7	22.8	28.3	2 X 4 1/8
37,000	101X373U063BF2B	6.2	4.1	26.3	32.3	2 X 5 5/8
41,000	101X413U063CC2B	6.4	4.5	29.6	35.2	2 1/2 X 4 1/8
58,000	101X583U063DC2B	6.7	5.3	30.9	34.3	3 X 4 1/8
61,000	101X613U063CF2B	4.6	3.3	35.1	41.3	2 1/2 X 5 5/8
78,000	101X783U063DE2B	5.2	4.1	35.4	39.3	3 X 5 1/8
87,000	101X873U063DF2B	4.8	3.8	37.1	41.0	3 X 5 5/8
92,000	101X923U063DP2B	4.6	3.7	37.7	41.5	3 X 5 7/8

105°C - 100V/100 Surge

2,100	101X212U075AK2B	111.3	49.2	4.7	8.8	1 3/8 X 1 5/8
3,500	101X352U075AA2B	67.2	33.0	6.2	11.3	1 3/8 X 2 1/8
4,800	101X482U075AH2B	48.4	23.9	7.8	14.0	1 3/8 X 2 5/8
6,200	101X622U075AB2B	38.0	19.0	8.9	15.7	1 3/8 X 3 1/8
9,000	101X902U075AC2B	27.0	13.7	10.7	18.3	1 3/8 X 4 1/8
13,000	101X133U075AF2B	19.3	10.1	12.7	19.9	1 3/8 X 5 5/8
13,000	101X133U075BB2B	21.4	11.9	14.7	22.5	2 X 3 1/8
16,000	101X163U075EC2B	19.2	10.8	14.0	19.9	1 3/4 X 4 1/8
19,000	101X193U075BC2B	14.6	7.8	18.5	27.4	2 X 4 1/8
28,000	101X283U075BF2B	9.9	5.6	22.0	31.5	2 X 5 5/8
31,000	101X313U075CC2B	9.9	5.7	25.4	35.2	2 1/2 X 4 1/8
44,000	101X443U075DC2B	8.7	6.0	28.8	34.8	3 X 4 1/8
47,000	101X473U075CF2B	6.6	4.1	31.3	41.0	2 1/2 X 5 5/8
59,000	101X593U075DE2B	6.7	4.7	33.3	39.7	3 X 5 1/8
66,000	101X663U075DF2B	6.0	4.3	35.2	41.5	3 X 5 5/8
70,000	101X703U075DP2B	5.8	4.1	35.4	42.1	3 X 5 7/8

105°C - 100V/30 Surge

1,300	101X132U100AK2B	132.4	53.0	4.3	8.6	1 3/8 X 1 5/8
2,200	101X222U100AA2B	85.2	35.2	5.5	11.2	1 3/8 X 2 1/8
3,100	101X312U100AH2B	61.3	24.7	7.0	13.8	1 3/8 X 2 5/8
4,000	101X402U100AB2B	46.6	19.3	8.3	15.5	1 3/8 X 3 1/8
5,800	101X582U100AC2B	31.8	14.0	9.8	18.1	1 3/8 X 4 1/8
8,200	101X822U100BB2B	25.0	3.9	13.6	37.8	2 X 3 1/8
8,500	101X852U100AF2B	22.7	10.5	12.0	19.5	1 3/8 X 5 5/8
11,000	101X113U100EC2B	22.1	10.9	13.5	19.9	1 3/4 X 4 1/8
12,000	101X123U100BC2B	17.0	8.0	16.0	26.5	2 X 4 1/8
19,000	101X193U100BF2B	11.4	5.7	20.5	31.3	2 X 5 5/8
20,000	101X203U100CC2B	10.7	5.6	24.3	35.1	2 1/2 X 4 1/8
29,000	101X293U100DC2B	9.4	5.9	27.7	35.0	3 X 4 1/8
30,000	101X303U100CF2B	7.4	4.0	29.4	41.5	2 1/2 X 5 5/8
38,000	101X383U100DE2B	7.2	4.6	31.9	40.0	3 X 5 1/8
43,000	101X433U100DF2B	6.5	4.2	34.2	42.8	3 X 5 5/8
46,000	101X463U100DP2B	6.2	4.0	34.2	42.6	3 X 5 7/8

105°C - 100V/30 Surge (continued)

3,800	101X382U050AK2B	54.2	31.4	6.6	9.6	1 3/8 X 1 5/8
6,300	101X632U050AA2B	33.0	21.2	8.8	12.4	1 3/8 X 2 1/8
8,800	101X882U050AH2B	24.0	15.5	11.2	14.9	1 3/8 X 2 5/8
11,000	101X113U050AB2B	19.0	12.5	13.0	17.1	1 3/8 X 3 1/8
16,000	101X163U050AC2B	13.4	9.2	14.8	19.5	1 3/8 X 4 1/8
23,000	101X233U050BB2B	11.3	8.0	19.7	23.4	2 X 3 1/8
24,000	101X243U050AF2B	10.3	7.1	16.6	20.9	1 3/8 X 5 5/8
30,000	101X303U050EC2B	11.0	8.2	18.5	22.0	1 3/4 X 4 1/8
35,000	101X353U050BC2B	7.9	5.7	23.6	28.4	2 X 4 1/8
52,000	101X523U050BF2B	5.8	4.0	27.1	32.4	2 X 5 5/8

106

Cap. µF	Catalog Number	ESR Max mΩ		Ripple A		Nominal Size (in.)
		120 Hz	20kHz	120Hz	20kHz	

150 Vdc - 200 Vdc Surge

490	101X491U150AK2B	500	326	2.2	3.1	1 3/8 X 1 5/8
880	101X881U150AA2B	276	181	3.3	4.6	1 3/8 X 2 1/8
1,300	101X132U150AH2B	191	126	4.3	6.0	1 3/8 X 2 5/8
1,700	101X172U150AB2B	146	96.5	5.3	7.4	1 3/8 X 3 1/8
2,500	101X252U150AC2B	100	66.4	7.2	10.0	1 3/8 X 4 1/8
3,400	101X342U150BB2B	79.3	57.9	10.0	11.9	2 X 3 1/8
3,600	101X362U150AF2B	71.4	46.0	8.7	12.0	1 3/8 X 5 5/8
4,400	101X442U150EC2B	65.3	41.3	10.1	13.2	1 3/4 X 4 1/8
5,200	101X522U150BC2B	51.1	38.4	12.8	16.7	2 X 4 1/8
7,900	101X792U150BF2B	34.2	26.2	15.7	20.4	2 X 5 5/8
8,500	101X852U150CC2B	32.0	24.1	18.9	23.9	2 1/2 X 4 1/8
12,000	101X123U150DB2B	23.7	18.5	23.1	27.7	3 X 4 1/8
13,000	101X133U150CF2B	21.0	16.2	23.3	30.1	2 1/2 X 5 5/8
16,000	101X163U150DE2B	17.8	13.9	27.2	32.3	3 X 5 1/8
18,000	101X183U150DF2B	15.9	12.5	28.8	34.1	3 X 5 5/8
19,000	101X193U150DP2B	15.1	11.9	29.0	34.8	3 X 5 7/8

200 Vdc - 275 Vdc Surge

380	101X381U200AK2B	547	332	2.1	3.1	1 3/8 X 1 5/8
680	101X681U200AA2B	301	184	3.2	4.6	1 3/8 X 2 1/8
980	101X981U200AH2B	209	128	4.1	6.0	1 3/8 X 2 5/8
1,300	101X132U200AB2B	160	98.4	5.1	7.3	1 3/8 X 3 1/8
1,900	101X192U200AC2B	109	67.7	6.9	9.9	1 3/8 X 4 1/8
2,600	101X262U200BB2B	86.0	58.8	9.6	11.8	2 X 3 1/8
2,800	101X282U200AF2B	77.9	46.9	8.3	11.8	1 3/8 X 5 5/8
3,400	101X342U200EC2B	71.0	42.0	9.7	13.1	1 3/4 X 4 1/8
4,000	101X402U200BC2B	55.3	39.0	12.3	16.5	2 X 4 1/8
6,100	101X612U200BF2B	37.0	26.6	15.1	20.3	2 X 5 5/8
6,500	101X652U200CC2B	34.6	24.5	18.2	23.8	2 1/2 X 4 1/8
9,300	101X932U200DC2B	25.4	18.7	22.3	27.5	3 X 4 1/8
10,000	101X1022050CF2B	22.7	16.5	22.4	29.9	2 1/2 X 5 5/8
13,000	101X133U200DE2B	19.0	14.1	26.3	32.1	3 X 5 1/8
14,000	101X143U200DF2B	17.0	12.6	27.8	33.9	3 X 5 5/8
15,000	101X153U200DP2B	16.1	12.0	28.0	34.6	3 X 5 7/8

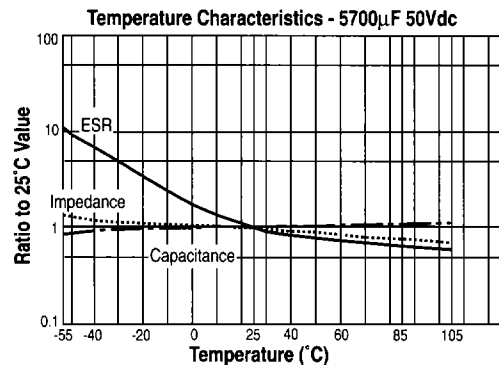
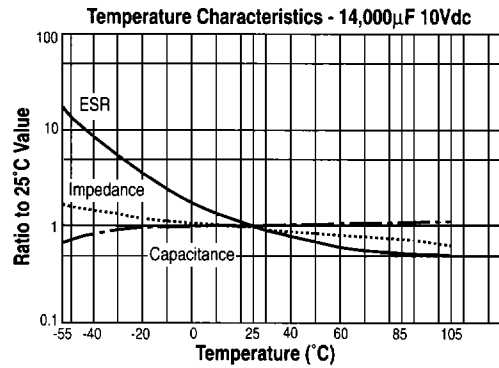
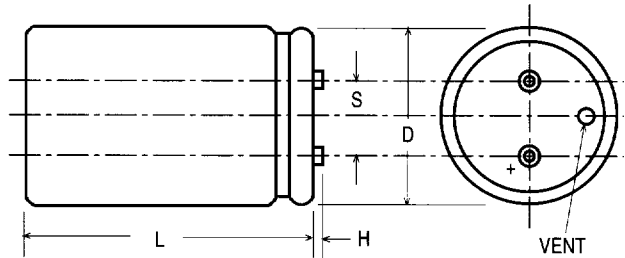
150 Vdc - 350 Vdc Surge

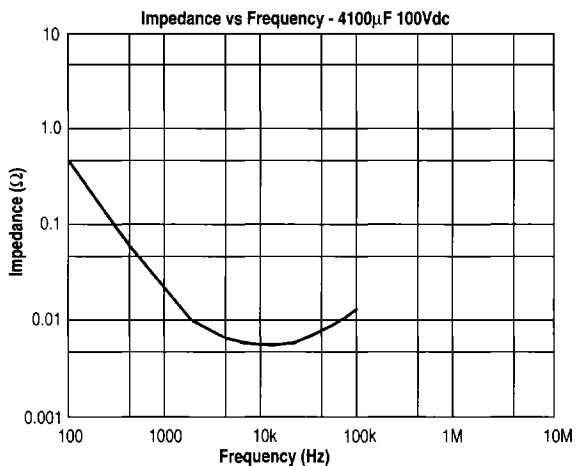
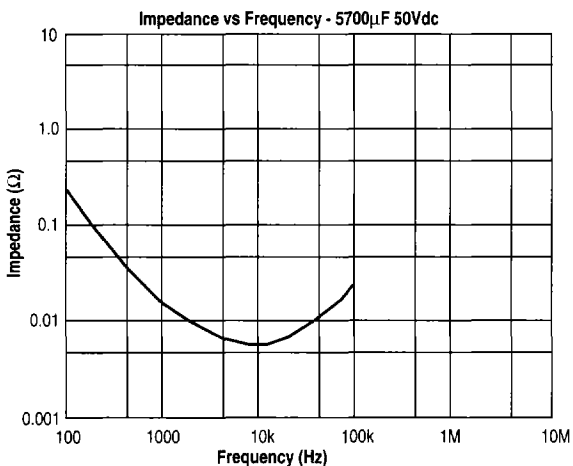
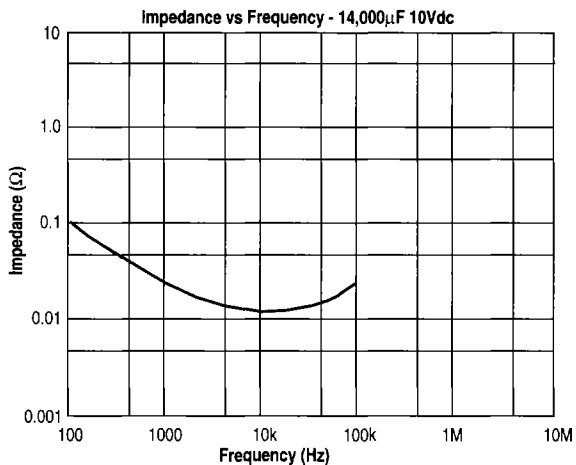
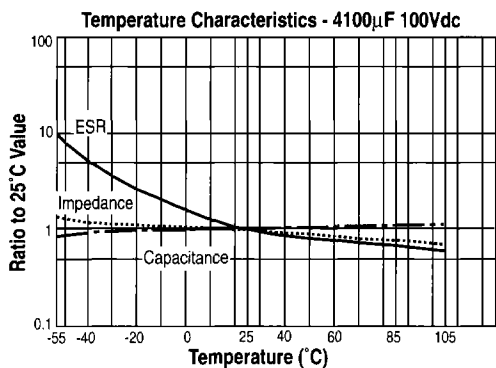
290	101X291U250AK2B	651	338	2.0	3.1	1 3/8 X 1 5/8
520	101X521U250AA2B	359	188	2.9	4.5	1 3/8 X 2 1/8
760	101X761U250AH2B	248	131	3.8	5.9	1 3/8 X 2 5/8
990	101X991U250AB2B	190	100	4.6	7.2	1 3/8 X 3 1/8
1,500	101X152U250AC2B	130	69.0	6.3	9.8	1 3/8 X 4 1/8
2,000	101X202U250BB2B	101	59.8	8.9	11.7	2 X 3 1/8
2,200	101X222U250AF2B	92.4	47.7	7.6	11.7	1 3/8 X 5 5/8
2,600	101X262U250EC2B	83.8	42.7	8.9	13.0	1 3/4 X 4 1/8
3,100	101X312U250BC2B	64.9	39.6	11.3	16.4	2 X 4 1/8
4,700	101X472U250BF2B	43.3	27.0	14.0	20.1	2 X 5 5/8
5,100	101X512U250CC2B	40.5	24.8	16.8	23.6	2 1/2 X 4 1/8
7,200	101X722U250DC2B	28.1	18.9	19.6	26.5	3 X 4 1/8
7,700	101X772U250CF2B	26.5	16.7	20.7	29.7	2 1/2 X 5 5/8
9,700	101X972U250DE2B	21.8	14.3	22.0	29.5	3 X 5 1/8
11,000	101X113U250DF2B	19.4	12.8	24.4	32.6	3 X 5 5/8
12,000	101X123U250DP2B	18.4	12.1	25.1	33.5	3 X 5 7/8

Ordering Information for Types 101X

101X 313 U 6R3 AK 2 B S

Type: 101X-----|
Capacitance: 100 = 10µF; 101 = 100µF-----|
 492 = 4900µF; 313 = 31,000µF
Tolerance: M = ±20; U = -10% +75%; T = -10% + 50%--|
Voltage: 6R3 = 6.3Vdc; 063 = 63Vdc; 100 = 100Vdc-----|
Case Code: See table on page 95-----|
Insulation: 0 = None; 1 = Polyester; 2 = PVC-----|
Terminal: A = Low Post; B = High Post; (See page 95)-----|
 D = High Current, Low Post; E = High Current, High Post
Can Style: Blank = Standard Can-----|
 S = Stud-Mount (See page 95 for details)
 See page 95 for additional technical and ordering details on Type 101X and other Computer Grade Capacitors.





X-ON Electronics

Largest Supplier of Electrical and Electronic Components

Click to view similar products for [Aluminium Electrolytic Capacitors - Screw Terminal](#) category:

Click to view products by [Cornell Dubilier](#) manufacturer:

Other Similar products are found below :

[M39018/04-2181M](#) [M39018/06-0125M](#) [M39018/06-0158M](#) [A331FH221M500A](#) [A331FD682M063A](#) [A331LH223M063A](#)
[A331PM682M200A](#) [FAS220250AA](#) [M39018/04-2146M](#) [36DA222F450CC2A](#) [32D502F075CD2B](#) [36D552G040AC2A](#) [36DA223F025BA2A](#)
[36DA563F050BF2A](#) [36DA152F400BC2AEA](#) [M39018/04-2145M](#) [36DA683F025BL2A](#) [M39018/06-0139M](#) [A331PM472M250A](#)
[E74D400HPN173TCE3M](#) [500X822U450DG1B](#) [HV101761T250BA2A](#) [A331LH683M025A](#) [A331LM333M063A](#) [A331TW682M500A](#)
[ALS36H222L5L350](#) [550322T450DF2BP](#) [500332U050BB2B](#) [ALS31B1003NX](#) [3186EC422U100APA1](#) [E36D351CPN402TEE3U](#)
[HES352T325X5L](#) [E36D800HPN104MEE3U](#) [E36D401HPN542TEH0U](#) [E36D451LPN412TEB7U](#) [E32D3B1HPN222MD79U](#)
[E36D800HLN104MEE3U](#) [MC-TD5.08H02C-0001](#) [DB2EKCM-5.08-2P-GN](#) [DB129R-5.0-2P-GN-S](#) [DB129R-5.0-3P-GN-S](#) [DB129R-5.08-](#)
[2P-GN-S](#) [DB129R-5.08-3P-GN-S](#) [CGH292T250V3L](#) [MAL210158103E3](#) [MAL210253472E3](#) [B41458B7479M000](#) [B43703A5828M000](#)
[B43742A4189M000](#) [B43742A5278M000](#)