

DESCRIPTION: REED RELAY, 1 FORM A WITH 1800 OHM, 12.0 VDC .

PART NUMBER  
4031-12-3001

ELECTRICAL

NOTES:

1. All parameters specified per EIA/NARM standards for dry reed relays NO RS-421 & RS-436 unless otherwise noted, all parameters specified @ 25 deg. C & 40% R.H.

TEST PARAMETERS	TEST CONDITIONS (note 1)	MIN.	NOM.	MAX.	UNITS
COIL RESISTANCE		1620	1800	1980	OHMS
NOMINAL VOLTAGE			12.0	16	VOLTS
MUST OPERATE	@25°C			9.0	VOLTS
MUST RELEASE		1.0			VOLTS
SWITCHING VOLTAGE				500	VOLTS
SWITCHING CURRENT				0.5	AMPS
CARRY CURRENT				1.0	AMPS
CONTACT RATING (SWITCHING)				10.0	WATTS
LIFE	1 VOLT 10 mAmps		100E6		OPERATIONS
EXPECTANCY	MEDIUM LOAD		N/A		OPERATIONS
	HIGH LOAD		N/A		OPERATIONS
STATIC CONTACT RESISTANCE	0.050 VOLTS , 10 Ma 50 mSec AFTER COIL ENERG.			.150	OHMS
DYNAMIC CONTACT RESISTANCE	0.50 VOLTS , 50 Ma 100 Hz 1.5 mSec.			N/A	OHMS
INSULATION RESISTANCE	ACROSS OPEN CONTACTS	1E10			OHMS
	CONTACT TO COIL	1E10			OHMS
	COIL TO SHIELD	N/A			OHMS
	CONTACT TO SHIELD	N/A			OHMS
CAPACITANCE	CONTACT GAP		0.2		pF
CAPACITANCE	OPEN CONTACTS		N/A		pF
CAPACITANCE	CONTACT TO COIL		N/A		pF
DIELECTRIC STRENGTH	CONTACT GAP	1200			VOLTS
	CONTACT TO SHIELD	N/A			VOLTS
	CONTACT TO COIL	1500			VOLTS
OPERATE TIME (INCLUDING BOUNCE)			1.0		mSEC
RELEASE TIME (ZENER DIODE SUPPRESSION)	AT NOMINAL VOLTAGE 30 Hz SQUARE WAVE		0.5		mSEC
ENVIRONMENTAL					
STORAGE TEMPERATURE		-40		+100	* C
OPERATING TEMPERATURE		-20		+80	* C

APPROVAL: SHEET: 1 OF 2

ENG: LMC CUST: N/A

REV: N/A CUST P/N N/A

DATE: 4/25/02 TYPE: 1 form A

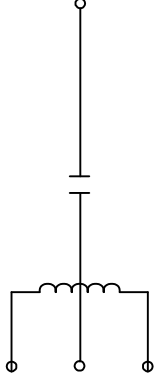
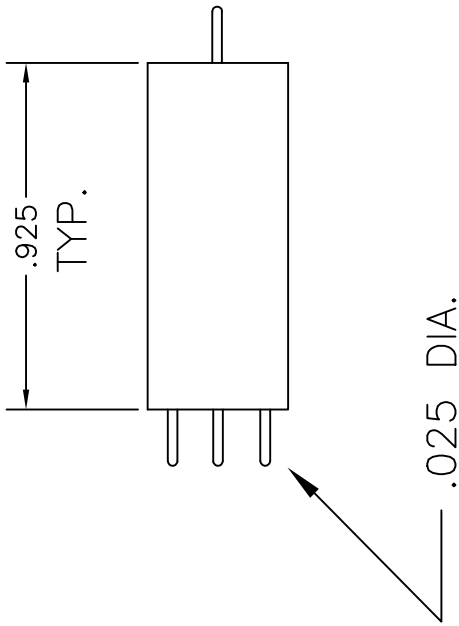
COTO P/N: 4031-12-3001



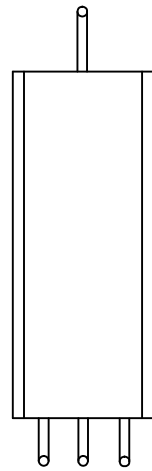
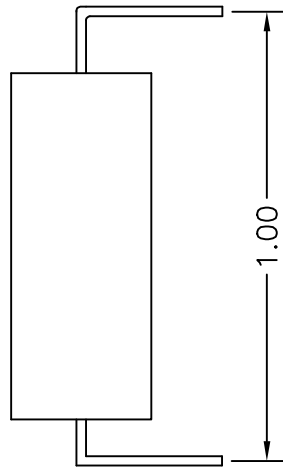
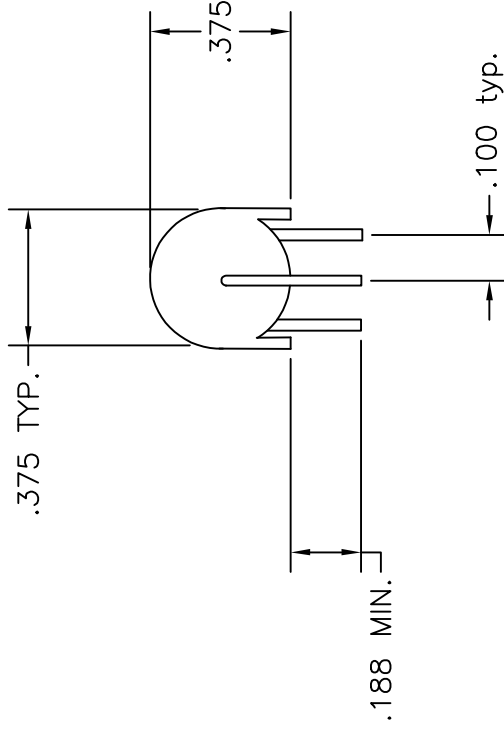
55 DUPONT DR.  
PROVIDENCE RI

PART NUMBER

4031-12-3001



SCHEMATIC  
(TOP VIEW)



SCALE: N/A

CUST P/N:

DECIMAL: .005

NAME: REED RELAY-1A

DATE: 4/25/02

FRACTIONS: 1/32

PART NO.: 4031-12-3001

ENG: LMC

COTO 55 DUPONT DR. PROVIDENCE R.I.

## X-ON Electronics

Largest Supplier of Electrical and Electronic Components

*Click to view similar products for [Reed Relays](#) category:*

*Click to view products by [Coto](#) manufacturer:*

Other Similar products are found below :

[M2C24AH](#) [D1A05HD-3](#) [741A10](#) [8000-0211](#) [8000-0217](#) [836C2](#) [922A06C4C](#) [PRMA1A12C](#) [PRMA1A24B](#) [PRMA1A24C](#) [PRMA1B12C](#)  
[PRMA1B24C](#) [PRMA1C05F](#) [PRMA2A24C](#) [R1C5DR](#) [R2A5D](#) [1220-0039](#) [RA30521051](#) [RA31232051](#) [HGS1005](#) [HGS1021](#) [HGS1048](#)  
[HGS1088](#) [HGS2MT51111F00](#) [HGS2MT51111M00](#) [HGZM1C24](#) [HGZM2C05](#) [HGZM2C48](#) [DA1A24DWD](#) [DA1A-24V](#) [DA1C05FWD](#)  
[DA1C12FW](#) [DA2A-6V](#) [134MPCX-3](#) [MRR1ADS8-24D](#) [MRR1ADS8-5D](#) [MRR1ADSK-12D](#) [159-151-T00](#) [MSS62A05](#) [MSS71A05](#)  
[MSS71A05B](#) [MSS71A12](#) [MSS71A24](#) [1804-105](#) [191TE1C2M-5S](#) [191TE2A1-5G](#) [191TE2A1-6G](#) [193RE4C3-24G](#) [HYR2001-1520](#)  
[195TE1B2E-5S](#)