

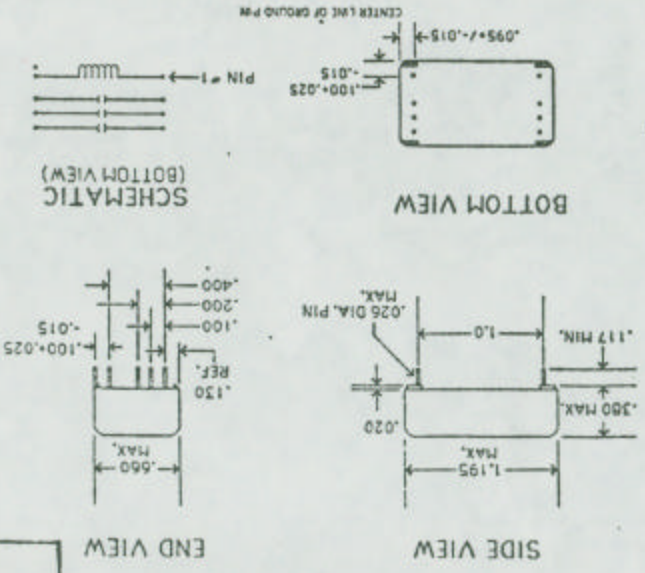
PARAMETER	TEST CONDITIONS	MIN.	NOM.	MAX.	UNITS
Coil Resistance		270	300	330	Ohms
Nom Voltage			5.0		VDC
Must Operate				3.75	VDC
Must Release			0.4		VDC
Max Switch Voltage	DC Peak AC		200		Volts
Max Switch Current	DC Peak AC Resistive		0.5		Amps
Max Carry Current	DC Peak AC		1.0		Amps
Max Contact Rating	DC Resistive		10.0		Watts
Life Expectancy	At Signal Level	SEE NOTE			X10 ⁶ OPERATIONS
	At Rated Load	SEE NOTE			X10 ⁶ OPERATIONS
Static Contact Resistance (Initial)	Contact Load		0.100		Ohms
Dynamic Contact Resistance (Initial)	0.5 Volt, 50 mA Load		0.200		Ohms
	100 Hz, 1.5 msec after coil energized				Ohms
Insulation Resistance	Between all isolated pins @ 100 V 25 deg C, 40% relative humidity		10 ¹⁰		Ohms
Detective Strength (Min.)	Between Contacts	300			Volts
	Contacts and Shield to Coil		1,600		Volts
Operating Time (Including Bounce)	At Nominal Voltage	0.5	1.0		msec.
	30 Hz Sq Wave				msec.
Released Time	Zero Diode Clamp	0.1	0.5		msec.
	Coil Suppression				

CAPACITANCE: Across open contacts: 1.5 pF max.
 Open contacts to coil: 2.9 pF max.
 Closed contacts to coil: 5.6 pF max.
 Between adjacent switches: 1.7 pF max.
 * Switch #1 250VAC VRMS.

LIFE EXPECTANCY:
 AT SIGNAL LEVEL: 5.0 V - 1.0 mA; 250x 10⁶ operations nominal.
 AT RATED LOAD: 20.0 V - 0.5 Amp; 5x10⁶ operations nominal.
 150.0 VDC, 50 mA, with 300 mA, inrush current upon closure: 1x10⁶ operations nominal.

All parameters specified per EIA/ARJ standard for dry relays No. RS-421 & RS-436. Specifications subject to change without notice. Unless otherwise noted, all parameters specified @ 25°C, 40% RH.

REVISION	DRAWN: T.J.	APPROVE: <i>[Signature]</i>	DATE: 10/17/89	NAME: REED RELAY, 3 FORM A	PART NO.: 7003-5118	FOR: GOULD/MODICON
	CUST. P/N: MA-0256-100		COTO CORPORATION 55 Dupont Dr. Prov., RI			



ALL DIMENSIONS ARE IN INCHES.
 BLACK DOT ON TOP DENOTES PIN #1
 ALL RELAYS ARE ENCAPSULATED IN A MAGNETICALLY SHIELDING STEEL SHELL THAT HAS BEEN COATED WITH A BRIGHT CHEMICALLY RESISTANT AND INSULATING EPOXY.
 NOTE: SWITCH #1 TO ACTIVATE 25 MSEC BEFORE SWITCHES #2 AND #3 WITH THE COIL DRIVEN AT 5.0 VOLTS, 10 HZ MAX.

PART NO	7003-5118
---------	-----------

X-ON Electronics

Largest Supplier of Electrical and Electronic Components

Click to view similar products for [coto manufacturer](#):

Other Similar products are found below :

[CR2TN3001](#) [CR4A1058](#) [CR4TN1005](#) [7142-12-1100](#) [7202-12-0100](#) [8401-1061](#) [8471-24-001](#) [9092-12-10](#) [925A05C1B](#) [1220-32-0102](#)
[HG1018](#) [HG2A1008](#) [HG2A1017](#) [HG2A1146](#) [HG3A1005](#) [HG4A1012](#) [HG4A1013](#) [HGP1009](#) [HGP1028](#) [HGP1052](#) [HGR2MT5001](#)
[HGRM50011N00](#) [HGS1004](#) [HGS1009](#) [HGS1021](#) [HGS1045](#) [HGS1098](#) [HGS5011](#) [HGS5012](#) [HGS5091](#) [HGSM51111M00](#) [HGSM51111T02](#)
[HGSM5235](#) [HGSR11111M00](#) [HGSR11111Q00](#) [HGSR11111V00](#) [HGSS5002](#) [HGSX5056](#) [HGSZM5115](#) [HGWM52112N00](#) [1240-0091](#)
[1240-0121](#) [1335-24-01](#) [1340-32-01](#) [MRB1B12](#) [MRB1L01](#) [MRME-1044](#) [HRB3A1505](#) [HRB5A1524](#) [2044-05-1101](#)