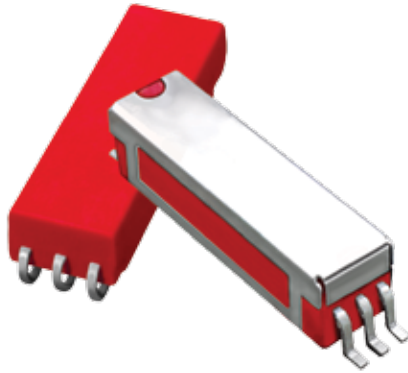


9200 SERIES/SURFACE MOUNT REED RELAYS



9200 Series Surface Mount Reed Relays

Ideally suited to the needs of Automated Test Equipment, Instrumentation and Telecommunications requirements, Coto's 9200 Series specification tables allow you to select the appropriate relay for your particular application. If your requirements differ, please consult your local representative or Coto's Factory to discuss a custom design.

9200 Series Features

- ▶ High Insulation Resistance - $10^{12}\Omega$ minimum ($10^{13}\Omega$ Typical)
- ▶ High reliability, hermetically sealed contacts for long life
- ▶ Molded thermoset body on integral lead frame design
- ▶ High speed switching compared to electromechanical relays
- ▶ Tape & Reel available
- ▶ UL File #E67117 - Contact factory for details
- ▶ RoHS compliant

9200 Series

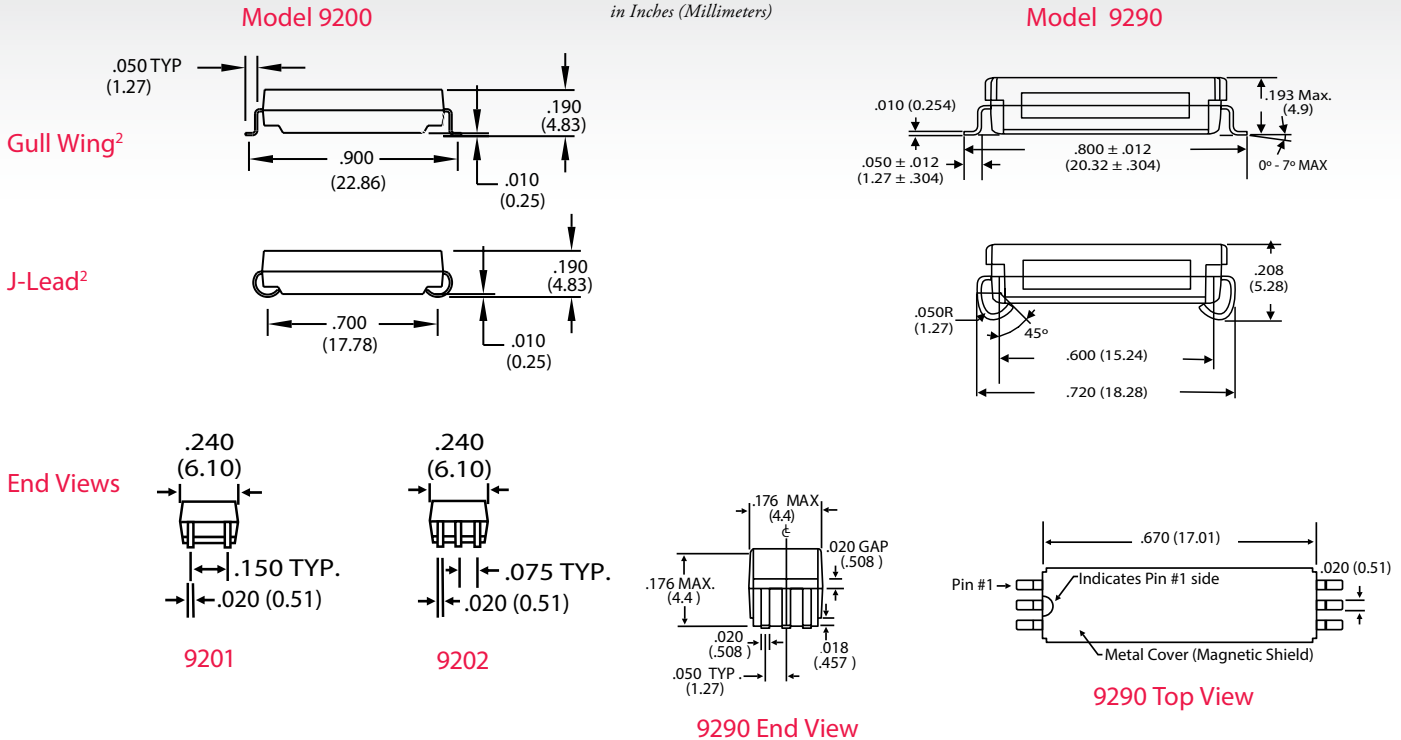
- ▶ Low profile - .190" height. Meets high board density requirements
- ▶ 50 Ω Coaxial Shield for RF and Fast Rise Time Pulse switching

9290 Series

- ▶ Low profile - .193" (4.9mm) max height
- ▶ Minimum Footprint .140" Sq. (3.5mm Sq.)
- ▶ 50 Ω Co-axial Shield for RF and Fast Rise Time Pulse switching
- ▶ External Magnetic Shield

DIMENSIONS

in Inches (Millimeters)



NOTE

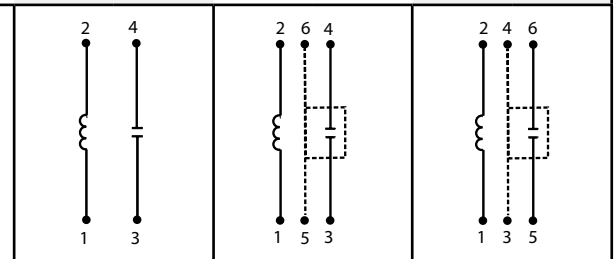
▶ For RF Graph Performance, see "RF Graphs" section of the *Reed Relay Technical & Application Information*

Ordering Information

| Part Number | 9XXX-XX-XX | Lead Style |
|--------------|---------------------------|-------------------------------|
| Model Number | 9201 9202 9290 | 00 = Gull Wing 20 = J-Lead |
| Coil Voltage | 05=5 volts 12=12 volts | |

| MODEL NUMBER | | | 9201 | 9202 | 9290 |
|---|--|------------------------|------------------|--------------------------|--------------------------|
| Parameters | Test Conditions | Units | 1 Form A | 1 Form A 50 Ω Coaxial | 1 Form A 50 Ω Coaxial |
| COIL SPECS. | | | | | |
| Nom. Coil Voltage | | VDC | 5 12 | 5 12 | 5 12 |
| Max. Coil Voltage | | VDC | 6.5 15.0 | 6.5 15.0 | 6.5 15.0 |
| Coil Resistance | +/- 10%, 25° C | Ω | 250 650 | 150 650 | 160 600 |
| Operate Voltage | Must Operate by | VDC - Max. | 3.75 9.0 | 3.75 9.0 | 3.75 9.0 |
| Release Voltage | Must Release by | VDC - Min. | 0.4 1.0 | 0.4 1.0 | 0.4 1.0 |
| CONTACT RATINGS | | | | | |
| Switching Voltage | Max DC/Peak AC Resist. | Volts | 200 | 200 | 200 |
| Switching Current | Max DC/Peak AC Resist. | Amps | 0.5 | 0.5 | 0.5 |
| Carry Current | Max DC/Peak AC Resist. | Amps | 1.5 | 1.5 | 1.5 |
| Contact Rating | Max DC/Peak AC Resist. | Watts | 10 | 10 | 10 |
| Life Expectancy-Typical ¹ | Signal Level 1.0V, 10mA | x 10 ⁶ Ops. | 1000 | 1000 | 1000 |
| Static Contact Resistance (max. init.) | 50mV, 10mA | Ω | 0.150 | 0.150 | 0.150 |
| Dynamic Contact Resistance (max. init.) | 0.5V, 50mA at 100 Hz, 1.5 msec | Ω | 0.200 | 0.200 | 0.200 |
| RELAY SPECIFICATIONS | | | | | |
| Insulation Resistance (minimum) | Between all Isolated Pins at 100V, 25°C, 40% RH | Ω | 10 ¹² | 10 ¹² | 10 ¹² |
| Capacitance - Typical Across Open Contacts | No Shield | pF | 0.7 | - | - |
| | Shield Floating | pF | - | 0.8 | 1.0 |
| | Shield Guarding | pF | - | 0.1 | 0.2 |
| Open Contact to Coil | No Shield | pF | 1.4 | - | - |
| | Shield Floating | pF | - | 1.4 | 2.0 |
| | Shield Guarding | pF | - | 0.2 | 0.4 |
| Contact to Coil | Contacts Open, Shield Floating | pF | - | 1.4 | 2 |
| Dielectric Strength (minimum) | Between Contacts | VDC/peak AC | 300 | 300 | 250 |
| | Contacts to Shield | VDC/peak AC | - | 1500 | 500 |
| | Contacts/Shield to Coil | VDC/peak AC | 1500 | 1500 | 500 |
| Operate Time - including bounce - Typical | At Nominal Coil Voltage, 30 Hz Square Wave | msec. | 0.40 | 0.40 | 0.40 |
| Release Time - Typical | | msec. | 0.10 | 0.10 | 0.10 |

Top View:
Dot stamped on top of relay refers to pin #1 location



Notes:

- ¹ Consult factory for life expectancy at other switching loads.
- ² Surface mount component processing temperature: 500°F / 260°C max for 1 minute dwell time. Temperature measured on leads where lead exits molded package.

Environmental Ratings:

Storage Temp: -35°C to +100°C; Operating Temp: -20°C to +85°C
All electrical parameters measured at 25°C unless otherwise specified.
Vibration: 20 G's to 2000 Hz; Shock: 50 G's

X-ON Electronics

Largest Supplier of Electrical and Electronic Components

Click to view similar products for [Reed Relays](#) category:

Click to view products by [Coto](#) manufacturer:

Other Similar products are found below :

[CUPE001A624](#) [CUPE004A605](#) [8000-0217](#) [922A06C4C](#) [PRMA1A24B](#) [HGS1021](#) [HGS1048](#) [HGZM1C24](#) [HGZM2C05](#) [HGZM2C12](#)
[HGZM2C48](#) [134MPCX-3](#) [MSS62A05](#) [MSS71A05](#) [MSS71A05B](#) [MSS71A12](#) [MSS71A12B](#) [MSS71A24](#) [HYR2001-1520](#) [9000-0153](#) [2600-0308](#) [2653-12-310](#) [2610-12-310](#) [2611-05-310](#) [PRMA1B05B](#) [2653-05-310](#) [HGP1005](#) [HGS1019](#) [HGS2M5114](#) [HGZM1C05](#) [HGZM1C12](#)
[HGZM1C48](#) [3-1393771-5](#) [3432-12-91](#) [CUPV50020](#) [HYR2031-1520](#) [V23100V4305C11](#) [W107DIP-43](#) [W193RE1C3-12G](#) [W193RE2A3-12G](#)
[W193RE2C3-24G](#) [W193RE3A3-24G](#) [W193RE3C3-24G](#) [W193RE4C3-12G](#) [5000-0242](#) [W193RE4C3-24G](#) [W193RE4A3-24G](#) [W193RE4A3-12G](#) [W193RE2C3-12G](#) [W193RE2A3-24G](#)