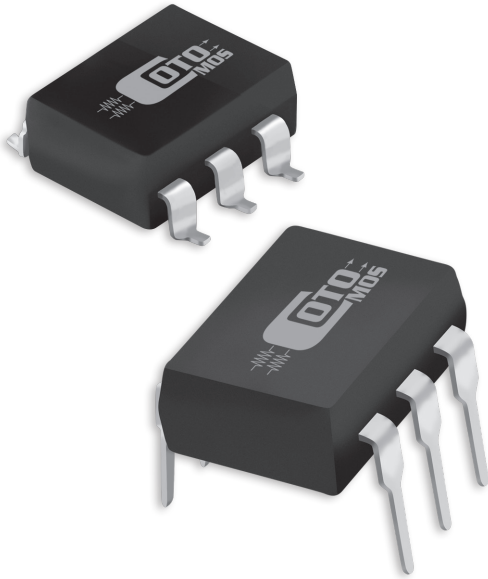


**CotoMOS® CT140/CS140**

The CT140 and CS140 combine Coto quality and economy in an industry standard 6 pin DIP package. Both the CT140 and the CS140 offer high voltage switching and high load current. The CT140 utilizes a thru hole lead configuration, while the CS140 offers a surface mount option when the application requires it. Both relays are ideally suited to the needs of Test and Measurement, Solar, and Battery Management.

**CT140/CS140 Features**

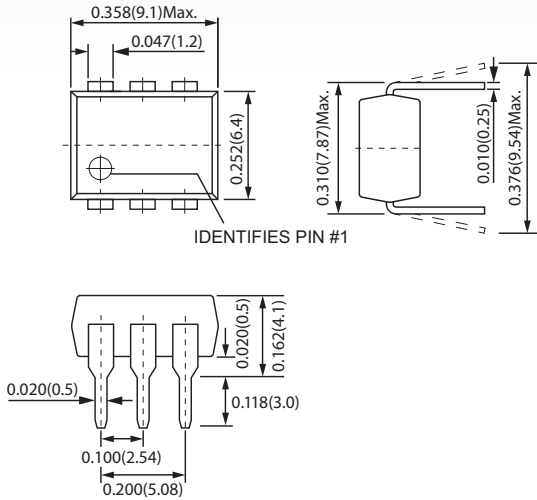
- ▶ Contact Form: 1A
- ▶ Load Voltage: 1500V Maximum
- ▶ Operation LED Current: 5.0mA Maximum
- ▶ Load Current: 45mA Maximum
- ▶ On-Resistance: 180Ω Typical
- ▶ Low Off-State Leakage Current: 10μA Maximum
- ▶ I/O Breakdown Voltage: 3750Vrms Minimum
- ▶ Suffix - H for I/O Breakdown Voltage: 5000Vrms Minimum



**DIMENSIONS**

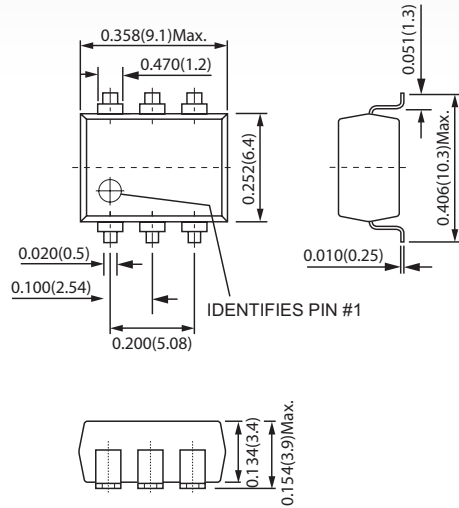
*in Inches (Millimeters)*

CT140



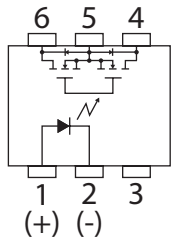
IDENTIFIES PIN #1

CS140



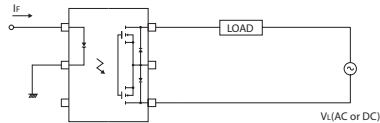
IDENTIFIES PIN #1

**TERMINAL IDENTIFICATION**

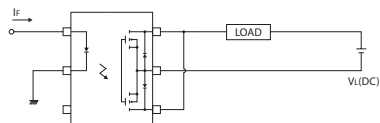


- |                  |                      |
|------------------|----------------------|
| 1: Anode (LED)   | 4,6: Drain (MOS FET) |
| 2: Cathode (LED) | 5: Source (MOS FET)  |
| 3: NC            |                      |

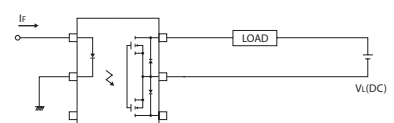
**CONNECTIONS**



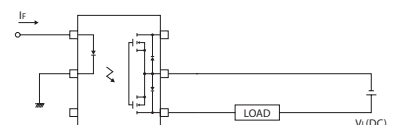
**A** Control bi-directional signal



**C** On-Resistance is 1/2 of B-connection



**B** On-Resistance is 1/2 of A-connection



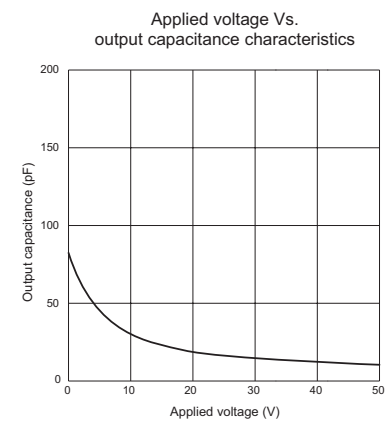
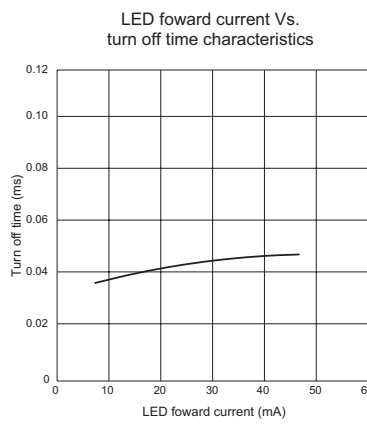
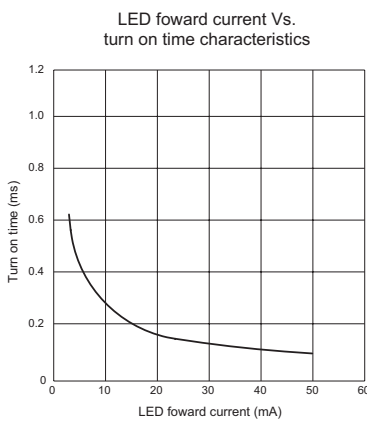
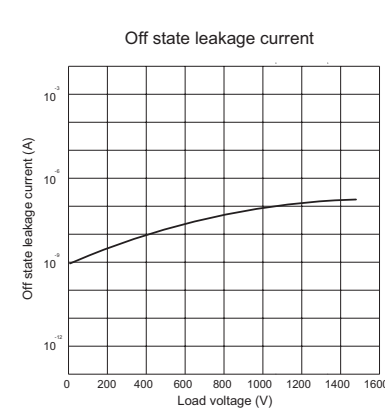
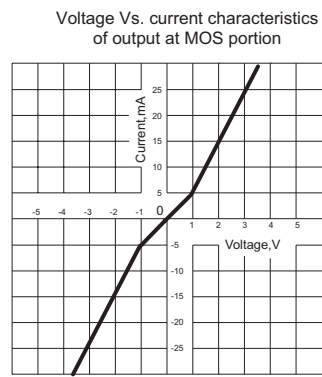
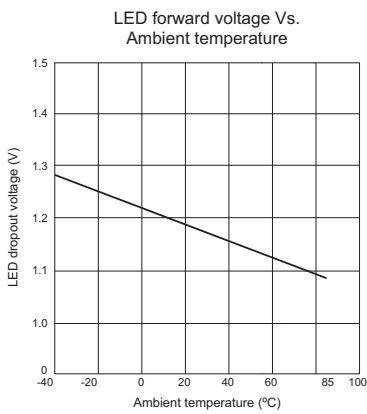
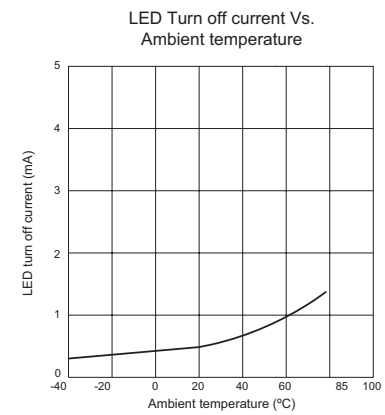
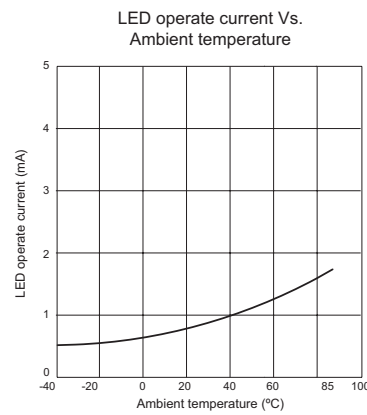
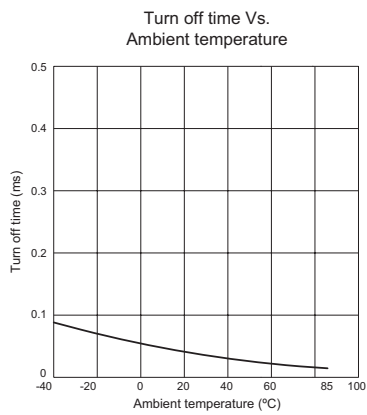
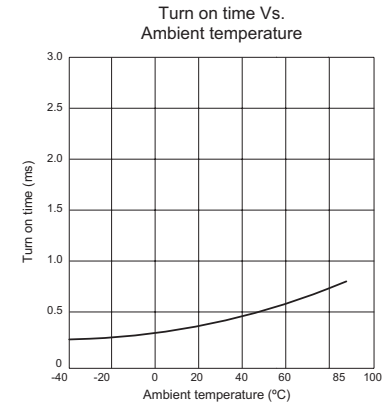
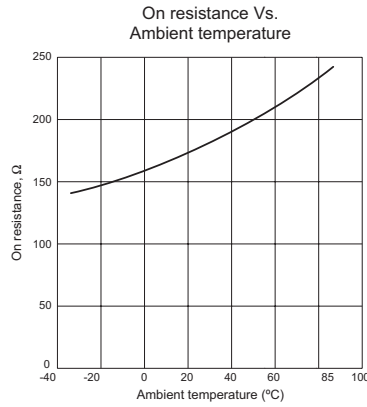
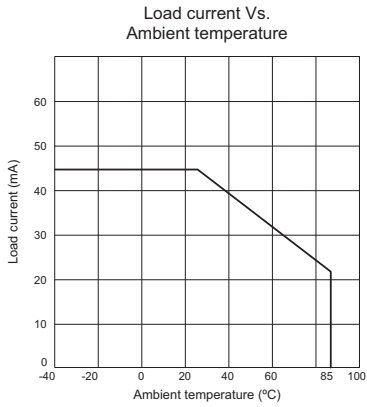
CT140/CS140 MAXIMUM RATINGS (Ambient Temperature: 25°C)				
Parameters	Symbol	Units	Value	
<b>INPUT SPECIFICATIONS</b>				
Continuous LED Current	I <sub>F</sub>	mA	50	
Peak LED Current	I <sub>FP</sub>	mA	500	
LED Reverse Voltage	V <sub>R</sub>	V	5	
Input Power Dissipation	P <sub>in</sub>	mW	75	
<b>OUTPUT SPECIFICATIONS</b>				
Load Voltage	V <sub>L</sub>	V (AC peak or DC)	1500	
Load Current <i>(See connections on previous page)</i>	I <sub>L</sub>	mA	A	45mA (AC or DC)
			B	50mA (DC)
			C	70mA (DC)
Peak Load Current	I <sub>Peak</sub>	mA	200	
Output Power Dissipation	P <sub>Out</sub>	mW	450	
<b>RELAY SPECIFICATIONS</b>				
Total Power Dissipation	P <sub>T</sub>	mW	500	
I/O Breakdown Voltage	V <sub>I/O</sub>	V <sub>rms</sub>	3750	
Operating Temperature	T <sub>Op</sub>	°C	-40 ~ +85	
Storage Temperature	T <sub>Stg</sub>	°C	-40 ~ +100	

CT140/CS140 ELECTRICAL SPECIFICATIONS (Ambient Temperature: 25°C)						
Parameters	Symbol	Test Conditions	Units	Min	Typ	Max
<b>INPUT</b>						
LED Forward Voltage	V <sub>F</sub>	I <sub>F</sub> =10mA	V	1.0	1.17	1.5
Operation LED Current	I <sub>F On</sub>		mA		0.9	5.0
Recovery LED Voltage	V <sub>F Off</sub>		V	0.5	1.0	
<b>OUTPUT</b>						
On-Resistance Drain to Drain	R <sub>On</sub>	I <sub>F</sub> =10mA, I <sub>L</sub> =Rating I <sub>F</sub> =10mA, I <sub>L</sub> <5mA	Ω		110 180	200 300
Off-State Leakage Current	I <sub>Leak</sub>	I <sub>F</sub> =0mA, V <sub>L</sub> =1500V	μA			10
Output Capacitance	C <sub>Out</sub>	V <sub>L</sub> =0V, f=1MHz	pF		83	
<b>TRANSMISSION</b>						
Turn-On Time	T <sub>On</sub>	I <sub>F</sub> =10mA, I <sub>L</sub> =Rating	ms		0.3	1.0
Turn-Off Time	T <sub>Off</sub>		ms		0.04	0.5
<b>COUPLED</b>						
I/O Insulation Resistance	R <sub>I/O</sub>		Ω	10 <sup>10</sup>		
I/O Capacitance	C <sub>I/O</sub>	f=1MHz	pF		1.3	

#### Environmental Ratings:

Operating Temp: -40°C to +85°C; Storage Temp: -40 to +100°C.

# 40 SERIES GRAPHS



## X-ON Electronics

Largest Supplier of Electrical and Electronic Components

*Click to view similar products for [Solid State Relays - PCB Mount](#) category:*

*Click to view products by [Coto](#) manufacturer:*

Other Similar products are found below :

[M86F-2W](#) [M90F-2Y](#) [G2-1A07-ST](#) [G2-1A07-TT](#) [G2-1B02-TT](#) [G2-DA06-ST](#) [923812OCAS](#) [PLA134S](#) [DS11-1005](#) [AQV210EHJ](#) [AQV212J](#)  
[AQV252GAJ](#) [AQY210ST](#) [AQY221N2SJ](#) [AQY221R2SJ](#) [AQY410SXJ](#) [AQY412EHAJ](#) [EFR1200480A150](#) [901-7](#) [LCA220](#) [LCB110S](#)  
[1618400-5](#) [SR75-1ST](#) [AQH2213AJ](#) [AQV112KLJ](#) [AQV212AJ](#) [AQV212SXJ](#) [AQV238AD01](#) [AQW414TS](#) [AQY221N2SYD01](#)  
[AQY221N2V1YJ](#) [AQY221R2VJ](#) [AQY275AXJ](#) [AQY414SXE01](#) [G2-1A02-ST](#) [G2-1A03-ST](#) [G2-1A03-TT](#) [G2-1A05-ST](#) [G2-1A06-TT](#) [G2-](#)  
[1A23-TT](#) [G2-1B01-ST](#) [G2-1B01-TT](#) [G2-1B02-ST](#) [G2-DA03-ST](#) [G2-DA03-TT](#) [G2-DA06-TT](#) [CPC1333GR](#) [3-1617776-2](#) [CTA2425](#)  
[TLP3131\(F\)](#)