

FEATURES

- **TI AM572x/AM574x Sitara Processor**
 - **1.5 GHz Dual ARM Cortex-A15**
 - ARM Neon and HW floating point
 - 32 KB L1 Program/Data Cache
 - 2 MB L2 cache
 - **Up to 2 C66x floating-point DSPs**
 - 750 MHz operation
 - 32 KB L1 Program/Data Cache
 - 288 KB Internal SRAM
 - **Hardware Acceleration**
 - Power VR SGX544 3D GPU
 - H.264 Video Encode/Decode
 - Up to 4 Embedded Vision Engines
 - 2x ARM Cortex-M4 co-processors
 - 2x dual-core PRUs
 - Crypto Hardware accelerators
- **On-Board Xilinx Artix-7 FPGA**
 - Up to XC7A50T
 - Up To 2,700 KBits Block RAM
 - Up To 52,160 Logic Cells
 - PCIe Interface to AM57x
 - 2 Transceivers available for external IO
- Up To 4 GB DDR3 RAM on dual banks
- Up To 32 MB QSPI based NOR FLASH
- Integrated Power Management
- Dual Edge and Board to Board Connectors
 - **96 FPGA I/O Pins**
 - **Up To 199 AM57xx Multiplexed IO's**
 - 2x 10/100/1000 EMAC / MDIO
 - 2x 10/100 EMAC supporting EtherCAT
 - McASP (audio) interface
 - Camera/Video Input
 - 2x MMC/SD
 - 3x I2C, 3x UART
 - 1x USB 2.0 dual-role
 - 1x USB 3.0 dual-role
 - SATA-2 (6 Gbps)
 - HDMI 1.4a Output



APPLICATIONS

- Embedded Instrumentation
- Factory Automation
- Industrial Communication
- Grid Infrastructure
- Industrial Drives
- Medical Instrumentation
- Embedded Control Processing
- Network Enabled Data Acquisition
- Test and Measurement
- Software Defined Radio
- Power Protection Systems
- Embedded Cameras
- Smart Vision Systems

BENEFITS

- Rapid Development / Deployment
- Multiple Connectivity and Interface Options
- Rich User Interfaces
- High System Integration
- Fixed & Floating Point Operations
- High-Level OS Support
 - Linux
 - Android
- Embedded Digital Signal Processing

DESCRIPTION

The MitySOM-AM57F is a highly configurable, very small form-factor processor card that features a Texas Instruments AM57xx series 1.5 GHz Sitara Processor tightly integrated with the Xilinx Artix-7 Field Programmable Gate Array (FPGA), NOR FLASH and DDR3 RAM memory subsystems. The design of the MitySOM-AM57F allows end-users the capability to develop programs/logic images for all of the compute elements on the AM57xx as well as for the FGPA. The MitySOM-AM57F provides a complete and flexible digital processing infrastructure necessary for the most demanding embedded applications development.

The onboard processor provides a dual CPU core topology. The Sitara AM57xx processor family includes a dual ARM Cortex-A15 microprocessor unit (MPU) subsystem capable of running the rich software applications programmer interfaces (APIs) expected by modern system designers. The ARM architecture supports several operating systems, including Linux and Android. In addition to the MPU, the AM57xx also includes up to two DSP C66x floating-point digital signal processing (DSP) core. The DSP core supports the freely provided TI SYSBIOS real-time kernel. Users can leverage the DSP to execute real-time compute algorithms (codecs, image/data processing, compression techniques, filtering, etc.).

For additional acceleration, the AM5xx provides 2 Programmable Real-Time Unit Subsystem and Industrial Communication Subsystem (PRU-ICSS) processing modules, and options are available for up to 4 Embedded Vision Engines (EVE), programmable image and vision processing engines.

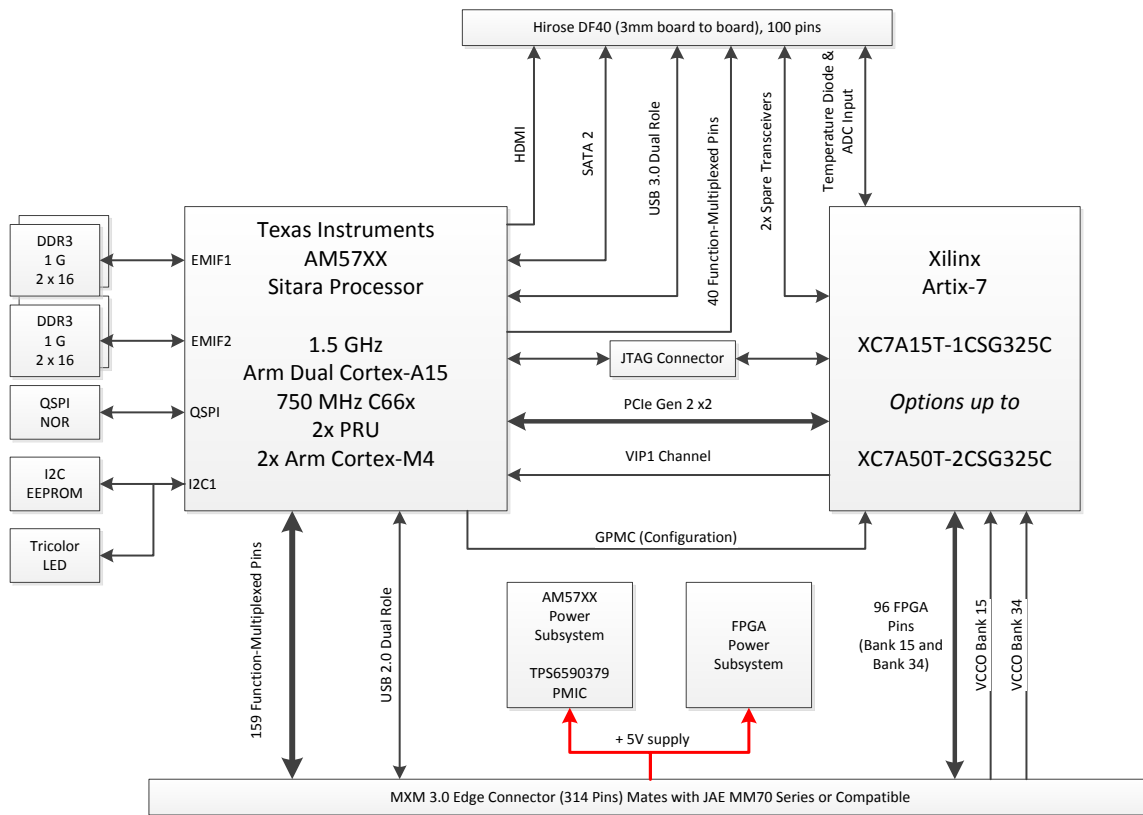


Figure 1 MitySOM-AM57F Block Diagram

Figure 1 provides a top-level block diagram of the MitySOM-AM57F processor card. As shown in the figure, there are two main interfaces to the module: a 314 pin Mobile PCI Express Module (MXM) style card-edge connector (J1), with 310 positions utilized, and a 100 pin Hirose DF40 series board-to-board connector (J3). The MXM card-edge connector interface provides power, 155 function multiplex pins from the Sitara processor (supporting 2x RGMII Ethernet MACs, 2x MII Ethercat master or slave interfaces, multiple I2C, UART, digital audio and SPI peripherals as well as standard GPIO), and up to 96 pins of configurable FPGA I/O for application-defined interfacing. The Hirose connector provides a high-speed interface for the AM57xx HDMI, SATA, and USB 3.0 interfaces as well as 2 spare FPGA transceiver lanes.

FPGA Bank I/O

The MitySOM-AM57F provides 96 lines of FPGA I/O directly to the MXM card-edge interface. The 96 lines of FPGA I/O are distributed evenly across 2 banks of the FPGA, Bank 15 and Bank 34. These I/O lines and their associated logic are completely configurable within the FPGA at the end user's discretion.

With the Xilinx Artix-7 series FPGA, up to the XC7A50T, each of the user-controlled banks may be configured to operate on a different electrical interface standard based on input voltage provided at the card-edge connector. The banks support 3.3V, 2.5V, and 1.8V standard CMOS switching level technology depending on the voltage supplied to VCCO_34_EXT (for bank 34) and VCCO_15_EXT (for bank 15) pins on J1. These pins must be powered externally based on the application requirements. For 3.3V or 1.8V levels, the VDD_1V8F or PS_3V3 output supplies on J1 may be used to power VCCO_34_EXT and VCCO_15_EXT. If 2.5V is required (e.g., to support LVDS or 2.5V voltage standards) than an external 2.5V supply must be connected to these pins.

In addition, the I/O lines from the FPGA have been routed as differential pairs and support higher speed LVDS standards as well as SSTL 2.5 switching standards. Various forms of termination (pull-up/pull-down, digitally controlled impedance matching) are available within the FPGA switch fabric. Refer to the Xilinx Artix-7 user's guide for more information.

The FPGA pins are configured to present a weak pull-up resistance (minimum 8.2K ohm) to VCCO prior to bitstream configuration loading. Designers should consider any power on requirements for FPGA controlled pins and use pull-down resistors as required.

FPGA Transceiver Support

Two spare transceiver lanes and a reference clock input of the Artix-7 have been routed to J3 on the MitySOM-AM57F interface. These lanes may be used for high-speed interfacing at the user's discretion. These lanes are not decoupled.

AM57xx DDR3 Memory Interface

The AM57xx processor includes two dedicated 32-bit DDR3 1066 SDRAM external memory interfaces (EMIF) shared between the onboard ARM, DSP, and hardware acceleration modules. Each bank is configured with up to 2 GB of DDR3, resulting in 4 GB available memory for the processor subsystem. Each bank is capable of burst bandwidths up to 4,264 MB/sec.

AM57xx QSPI NOR FLASH Interface

The MitySOM-AM57F includes up to 32 MB of Quad-SPI NOR FLASH. This FLASH memory is intended to store a factory provided bootloader, and typically a compressed image of a Linux kernel for the ARM core processor if alternate boot media such as Micro-SD card or eMMC is not available.

AM57xx Video Interfaces

The AM57xx includes a dedicated HDMI 1.4a output interface and up to 3 Display Parallel Interface (DPI) Video Output Ports as indicated in the Multifunction IO pins in the interfaces section. The AM57xx provides 2 Video Input Ports. One is available directly on the Multifunction IO pins and a second video input port (VIP1) has been routed directly to the on-board FPGA to support interfacing to custom sensors with the FPGA and feeding the data directly to the AM57xx for processing.

AM57xx USB Interfaces

The AM57xx processor includes provisions for one USB 3.0 SuperSpeed (SS) dual-role and a second USB 2.0 dual-role device. Both of these interfaces have been routed to the external interface connectors (USB 3.0 on J3, USB 2.0 on J1) for connection to a carrier card. The USB 3.0 SS TX data lanes have been AC coupled on the SOM with 0.1uF ceramic decoupling capacitors.

The USB_VBUS (pin 240 J1) signal is connected to a comparator on the SOM's TPS6590379 VBUS pin. When USB_VBUS is greater than 2.9V, its VBUSDET signal will go high which is connected to

GPIO4_22 on the SOM. This is used by the USB driver to detect USB insertion and enable/disable USBx_DRVVBUS. If not used, this pin should be pulled to ground.

AM57xx SATA Interface

The AM57xx processor includes a physical interface and driver for a SATA-II data channel interface. The signals for this interface have been routed to the J3 connector. These signals have been AC coupled using a 0.01uF ceramic capacitor.

AM57xx Multifunction Input/Output (MFIO) Interfaces

The MitySOM-AM57F routes more than 200 multifunction IO pins from the AM57x to the external J1 or J3 connectors on the module for customer use. All of the pins operate on a 1.8V voltage domain excluding the mmc1 pins (vddshv8/LDO1) which default to 3.3V. The specific connection and available functions are included in the connector descriptions in the following sections. Functions supported include:

- Up to 10 UARTS
- Up to 3 SPI busses
- Up to 1 McASP port with up to 7 data lanes
- Up to 2 DCAN busses
- Up to 2 RGMII busses
- Up to 2 additional MII busses supporting Ethercat master and slave
- Up to 4 I2C busses
- Up to 3 MMC/SD IO interfaces

The MitySOM-AM57F does use some AM57xx multi-function pins as dedicated functions on the SOM, including:

- UART3 (balls D27, C28) as a dedicated console port
- I2C1 (balls C20, C21) used to communicate to the following peripherals:
 - Factory configuration EEPROM (24AA32AFT, Address 7b1010xxx)
 - RGB LED controller (TCA6507RUEP, Address 7b1000101)
 - Power Management IC (TPS6590379ZWST, Address 7b10010xx)
- GPIO1[0] (ball AD17) used for PMIC interrupts
- GPIO2[21] (ball P1) used for FPGA init status
- GPIO2[28] (ball N2) used for FPGA programming status
- GPIO3[23] (ball AE1) used to control the PCIe reset signal to the FPGA
- GPIO4[22] (ball C11) used for VBUS_DET signal from PMIC
- GPIO7[11] (ball A22) used to control DDR VTT termination
- VIN4a interface (24-bit wide) connected to FPGA, pins de0, fld0, hsync0, and vsync0 are not used and should be available
- CPU_NMI (ball D21) connected to FPGA pin for FPGA driven NMI
- SYS_NIRQ1/SYS_NIRQ2 (balls AB16, AC16) connected to FPGA pins for system interrupts
- GPMC interface (16 bit wide) connected to the FPGA for slave select configuration and register manipulation
- QSPI (balls P2, R2, P3, R3, U1, U2, and T2) to support up to 32MB of bootable QSPI NOR

AM57xx Boot Media Mode

The MitySOM-AM57F can be configured to boot using 2 different boot sequences according to the AM57_BOOT_MODE pin (J3 - Pin 74). The pin is pulled up to +1.8V on the SOM and results in the default boot mode being the “high” mode shown below. If the “low” mode is desired this signal should be pulled to GND on the carrier board.

- The boot sequence when AM57_BOOT_MODE **high** is:
 - SD card (MMC1 - Table 1)
 - eMMC (MMC2 - Table 2)
 - HS USB 2.0 (USB1 - Table 3)
- The boot sequence when AM57_BOOT_MODE **low** is:
 - On SOM Quad SPI NOR (QSPI1 - Table 4)
 - SD card (MMC1 - Table 1)
 - HS USB 2.0 (USB1 - Table 3)

Table 1: SD Card (MMC1) Boot Mode Signals

Interface Signal	AM57xx Ball	MitySOM-AM57F Pin
mmc1_clk	W6	J1 – Pin 165
mmc1_cmd	Y6	J1 – Pin 167
mmc1_dat0	AA6	J1 – Pin 175
mmc1_dat1	Y4	J1 – Pin 173
mmc1_dat2	AA5	J1 – Pin 171
mmc1_dat3	Y3	J1 – Pin 169

Table 2: eMMC (MMC2) Boot Mode Signals

Interface Signal	AM57xx Ball	MitySOM-AM57F Pin
mmc2_clk	J7	J1 – Pin 135
mmc2_cmd	H6	J1 – Pin 137
mmc2_dat0	J4	J1 – Pin 139
mmc2_dat1	J6	J1 – Pin 141
mmc2_dat2	H4	J1 – Pin 143
mmc2_dat3	H5	J1 – Pin 145
mmc2_dat4	K7	J1 – Pin 147
mmc2_dat5	M7	J1 – Pin 149
mmc2_dat6	J5	J1 – Pin 151
mmc2_dat7	K6	J1 – Pin 153

Table 3: HS USB 2.0 (USB1) Boot Mode Signals

Interface Signal	AM57xx Ball	MitySOM-AM57F Pin
usb1_dp	AC12	J3 – Pin 45
usb1_dm	AD12	J3 – Pin 43

Table 4: On-SOM QSPI NOR (QSPI1) Boot Mode Signals

Interface Signal	AM57xx Ball	MitySOM-AM57F Pin
qspi1_rtcclk	R3	N/A
qspi1_sclk	R2	N/A
qspi1_cs0	P2	N/A
qspi1_d0	U1	N/A
qspi1_d1	P3	N/A
qspi1_d2	U2	N/A
qspi1_d3	T2	N/A

AM57xx Secure Boot Features

Secure boot features are available with MitySOM-AM57F modules that feature the AM5748 and AM5749 processors. Please contact your Critical Link sales representative for additional details if you require this feature.

Power Interface

The MitySOM-AM57F is powered via a +5.0V external supply on the VDD_5V0 pins and via the VCCO_34_EXT and VCCO_15_EXT pins.

The MitySOM-AM57F leverages a TPS659037 power management IC for managing the power sequencing/monitoring of the AM57xx. The PMIC will automatically power on when power is applied and the U-boot initialization code will set DEV_CTRL.DEV_ON to 1 to keep the PMIC powered on. This allows the software to power off the SOM at the end of power down by setting this bit to 0. The PMIC_POWERHOLD signal (PMIC ball G9), which is available external to the module at J1 Pin E3-7 should be left floating in this scenario.

Alternatively, control of the module's power state, on/off, from the baseboard can be accomplished with the PMIC_POWERHOLD signal, PMIC ball G9, which is available external to the module at J1 Pin E3-7. Driving this signal high allows the module to stay on and pulling this signal low will cause the PMIC to

begin its sequential power down process. Note this does not allow the OS to power down safely, it needs to be told to shut down separately and shutdown needs to complete before this signal goes low. Additional supply management is performed on board to support the proper powering of the on-board DDR3 and FPGA core voltages. The FPGA bank voltages for the bank 15 and bank 34 pins must be provided externally and can be either 3.3V, 2.5V or 1.8V.

Debug LEDs

There are 3 debug LEDs on the MitySOM-AM57F module. Two are an on/off status LED tied to a specific condition and the other is controlled by software through the LED controller, TCA6507RUEP, on the I2C1 interface.

Power Debug LED

D2 (POK) indicates that the module power sequence has completed successfully by lighting this yellow LED. The LED is enabled from the “PMIC_POWERGOOD” output which is also exposed at the card-edge connector pin E3-6 of the module.

Configuration Debug LED

D8 (DONE) indicates that the FPGA configuration is loaded by lighting a yellow LED. The FPGA can be loaded by the ARM in U-boot.

I2C Controllable LED

D1 is an RGB LED that is software controllable by the TCA6507RUEP connected to the I2C1 interface of the AM57xx processor.

Green – U-boot turns on this LED when its loaded then off when it finishes.

Blue – The Kernel uses this LED to indicate SD card (mmc0) activity.

Software and Application Development Support

Users of the MitySOM-AM57F are encouraged to develop applications and FPGA firmware using the hardware and software development kit provided by Critical Link. The development kit includes a board support package providing a Linux based distribution and compatible GCC compiler toolchain with debugger based on the TI Linux Software Development Kit. In addition, the development kit includes support libraries necessary to program the DSP core using the TI Code Composer Studio DSP compiler toolchain.

To support rapid FPGA and application development, several example projects are provided that demonstrate using both the 16-bit general-purpose memory controller (GPMC) and the PCIe interface between the FPGA and the AM57xx processor.

Growth Options

The MitySOM-AM57F has been designed to support several options to provide customers with the ability to cost-optimize solutions for production volumes based on their project technical needs. These options include various processor options, memory configurations, FPGA densities, and operating temperature specifications including commercial and industrial temperature ranges. The available options are listed in the section below, containing ordering information. For additional ordering information and details regarding these options, or to inquire about a particular configuration not listed below, please contact Critical Link at info@criticallink.com.

ABSOLUTE MAXIMUM RATINGS

Maximum Supply Voltage, Vcc	5.5 V
Storage Temperature Range	-65°C to 80°C
Shock, Z-Axis	±10 g
Shock, X/Y-Axis	±10 g

OPERATING CONDITIONS

Ambient Temperature Range Commercial	0°C to 70°C
Ambient Temperature Range Industrial	-40°C to 85°C
Humidity	0 to 95% Non-condensing
MIL-STD-810F	Contact Critical Link for Details

The following are the minimum temperature ratings for the components that are installed on a MitySOM-AM57F. For specifications not contained in this table please contact a Critical Link sales representative. Please see the Thermal Management section below for additional information.

Table 5: Module Component Temperature Rating (minimum)

Temperature Range Description	Component Ratings (minimum)
Commercial (-RC model number)	0°C to 70°C
Industrial (-RI model number)	-40°C to 85°C

Thermal Management

The MitySOM-AM57F module requires consideration of thermal management depending on processor selection, loading, and other considerations. Thermal management is a system-level issue that must be addressed in conjunction with the overall system design. Every end product is different and it is advisable to perform thorough testing to ensure that the product will meet desired performance and longevity specifications.

Critical Link has developed a sample heat-spreader that is compatible with the MitySOM-AM57F. Please contact your Critical Link representative for further details and ordering information.

Card-Edge Interface Description (J1)

The first interface connector for the MitySOM-AM57F is the MXM style 314 pin card-edge interface with 310 positions utilized. The Keys are shown in the numbering but no actual pins exist. The connector interface uses 310-pins counted as follows: 281 total “pins”, minus 7 for the “keys”, plus 36 for the E1, E2, E3, and E4 pin-groups as four of these are no connects “NC”. This allows the module to be compatible with either 314 or 310 loaded position MXM connectors.

The interface contains 6 types of signals:

- Power input and ground/return (PWR / GND)
- Pins mapped to the Xilinx Artix-7 Device (FPGA)
- Multi-function signals mapped to the AM57XX device (MFIO)
- Module fixed-function pins (FF)
- Dedicated signals mapped to the Power Management IC (PMIO)
- Power output pins that may be used for driving the FPGA bank voltages (OUT)

Table 6 contains a summary of the MitySOM-AM57F MXM card-edge interface pin mapping which includes:

- Connector pin assignment
- Voltage domains (where B15 and B34 indicate Artix 7 Bank 15 and 34 Voltages)



- FPGA or AM57XX ball for direct connect pins
- Signal Options / name for each pin
 - For FPGA connections, the signal option name is of the form
IO_<BANK>_<LVDSPAIR>_<N/P>

Card-Edge Mating Connector

The MitySOM-AM57F module mates with two connectors, J1 & J3, which contain the power and I/O connections for the module. The primary connector is J1 which is the card-edge interface based on the MXM connector standard.

Due to the secondary connector, J3, being a 3.0mm board to board height connector the primary connector must result in a similar board height. Critical Link recommends that a 3.0mm board height MXM connector be used, such as the JAE MM70-314 series, specifically the “-R300” option, however other connectors may be used as long as the board to board height is +/- 10%; 2.7mm to 3.3mm.

Please see our Wiki pages on our Redmine site at support.criticallink.com for up to date compatible connector options.

Table 6 J1 Pin-Out

Pin	Type	Volt	fpga ball	57xx ball	Signal Option 1	Signal Option 2	Signal Option 3	Signal Option 4	Signal Option 5	Signal Option 6	Signal Option 7	Signal Option 8	Signal Option 9	Signal Option 10
1	FPGA	B15	B17	-	IO_15_L16_N									
2	FPGA	B15	C18	-	IO_15_L18_N									
3	FPGA	B15	C16	-	IO_15_L16_P									
4	FPGA	B15	D18	-	IO_15_L17_N									
5	FPGA	B15	D16	-	IO_15_L14_N		SRCC_N							
6	FPGA	B15	E17	-	IO_15_L17_P									
7	FPGA	B15	E16	-	IO_15_L14_P		SRCC_P							
8	GND	-	-	-	GND									
9	FPGA	B15	F15	-	IO_15_L21_N									
10	FPGA	B15	E18	-	IO_15_L24_N									
11	FPGA	B15	G15	-	IO_15_L21_P									
12	FPGA	B15	F17	-	IO_15_L24_P									
13	GND	-	-	-	GND									
14	FPGA	B15	F18	-	IO_15_L19_N									
15	FPGA	B15	G16	-	IO_15_L20_N									
16	FPGA	B15	G17	-	IO_15_L19_P									
17	FPGA	B15	H16	-	IO_15_L20_P									
18	FPGA	B15	H18	-	IO_15_L23_N									
19	FPGA	B15	C11	-	IO_15_L4_P									
20	FPGA	B15	H17	-	IO_15_L23_P									
21	FPGA	B15	B11	-	IO_15_L4_N									
22	FPGA	B15	C8	-	IO_15_L1_N	AD0N								
23	FPGA	B15	A13	-	IO_15_L8_P	AD10P								
24	FPGA	B15	D8	-	IO_15_L1_P	AD0P								
25	FPGA	B15	A14	-	IO_15_L8_N	AD10N								

Pin	Type	Volt	fpga ball	57xx ball	Signal Option 1	Signal Option 2	Signal Option 3	Signal Option 4	Signal Option 5	Signal Option 6	Signal Option 7	Signal Option 8	Signal Option 9	Signal Option 10
26	GND	-	-	-	GND									
27	FPGA	B15	A15	-	IO_15_L10_N	AD11N								
28	FPGA	B15	A12	-	IO_15_L7_N	AD2N								
29	FPGA	B15	B14	-	IO_15_L10_P	AD11P								
30	FPGA	B15	B12	-	IO_15_L7_P	AD2P								
31	GND	-	-	-	GND									
32	FPGA	B15	B15	-	IO_15_L9_N	AD3N								
33	FPGA	B15	C13	-	IO_15_L11_N		SRCC_N							
34	FPGA	B15	C14	-	IO_15_L9_P	AD3P								
35	FPGA	B15	D13	-	IO_15_L11_P		SRCC_P							
36	FPGA	B15	D14	-	IO_15_L12_N		MRCC_N							
37	FPGA	B15	C12	-	IO_15_L6_N									
38	FPGA	B15	E13	-	IO_15_L12_P		MRCC_P							
39	FPGA	B15	D11	-	IO_15_L6_P									
40	FPGA	B15	F14	-	IO_15_L22_N									
41	FPGA	B15	C9	-	IO_15_L2_N	AD8N								
42	FPGA	B15	G14	-	IO_15_L22_P									
43	FPGA	B15	D9	-	IO_15_L2_P	AD8P								
44	GND	-	-	-	GND									
45	FPGA	B15	D15	-	IO_15_L13_N		MRCC_N							
46	FPGA	B34	V8	-	IO_34_L24_P									
47	FPGA	B15	E15	-	IO_15_L13_P		MRCC_P							
48	FPGA	B34	V7	-	IO_34_L24_N									
49	GND	-	-	-	GND									
50	FPGA	B34	U7	-	IO_34_L23_P									
51	FPGA	B34	R3	-	IO_34_L14_P		SRCC_P							

Pin	Type	Volt	fpga ball	57xx ball	Signal Option 1	Signal Option 2	Signal Option 3	Signal Option 4	Signal Option 5	Signal Option 6	Signal Option 7	Signal Option 8	Signal Option 9	Signal Option 10
52	FPGA	B34	V6	-	IO_34_L23_N									
53	FPGA	B34	T2	-	IO_34_L14_N		SRCC_N							
54	FPGA	B34	M6	-	IO_34_L8_P									
55	FPGA	B34	R2	-	IO_34_L13_P		MRCC_P							
56	FPGA	B34	N6	-	IO_34_L8_N									
57	FPGA	B34	R1	-	IO_34_L13_N		MRCC_N							
58	FPGA	B34	P6	-	IO_34_L19_P									
59	FPGA	B34	J5	-	IO_34_L2_P									
60	FPGA	B34	P5	-	IO_34_L19_N									
61	FPGA	B34	J4	-	IO_34_L2_N									
62	GND	-	-	-	GND									
63	FPGA	B34	P1	-	IO_34_L9_N									
64	FPGA	B34	T7	-	IO_34_L22_N									
65	FPGA	B34	N1	-	IO_34_L9_P									
66	FPGA	B34	R7	-	IO_34_L22_P									
67	GND	-	-	-	GND									
68	FPGA	B34	T5	-	IO_34_L21_N									
69	FPGA	B34	K6	-	IO_34_L1_N									
70	FPGA	B34	R5	-	IO_34_L21_P									
71	FPGA	B34	K5	-	IO_34_L1_P									
72	FPGA	B34	U6	-	IO_34_L20_P									
73	FPGA	B34	L5	-	IO_34_L6_P									
74	FPGA	B34	U5	-	IO_34_L20_N									
75	FPGA	B34	M5	-	IO_34_L6_N									
76	FPGA	B34	V4	-	IO_34_L18_N									
77	FPGA	B34	M4	-	IO_34_L10_P									

Pin	Type	Volt	fpga ball	57xx ball	Signal Option 1	Signal Option 2	Signal Option 3	Signal Option 4	Signal Option 5	Signal Option 6	Signal Option 7	Signal Option 8	Signal Option 9	Signal Option 10
78	FPGA	B34	U4	-	IO_34_L18_P									
79	FPGA	B34	N4	-	IO_34_L10_N									
80	GND	-	-	-	GND									
81	FPGA	B34	L4	-	IO_34_L5_P									
82	FPGA	B34	T4	-	IO_34_L17_P									
83	FPGA	B34	L3	-	IO_34_L5_N									
84	FPGA	B34	T3	-	IO_34_L17_N									
85	GND	-	-	-	GND									
86	FPGA	B34	N3	-	IO_34_L11_P		SRCC_P							
87	FPGA	B34	M2	-	IO_34_L7_P									
88	FPGA	B34	N2	-	IO_34_L11_N		SRCC_N							
89	FPGA	B34	M1	-	IO_34_L7_N									
90	FPGA	B34	V3	-	IO_34_L16_P									
91	FPGA	B34	P4	-	IO_34_L12_P		MRCC_P							
92	FPGA	B34	V2	-	IO_34_L16_N									
93	FPGA	B34	P3	-	IO_34_L12_N		MRCC_N							
94	FPGA	B34	U2	-	IO_34_L15_P									
95	FPGA	B34	K2	-	IO_34_L3_P									
96	FPGA	B34	U1	-	IO_34_L15_N									
97	FPGA	B34	K1	-	IO_34_L3_N									
98	GND	-	-	-	GND									
99	FPGA	B34	K3	-	IO_34_L4_P									
100	MFIO	1.8	-	U6	RGMII0_TXD0	RMII0_RXD0	MII0_RXD0	VIN2A_D10	SPI4_CS0	UART4_RTSN	PR1_MII0_RXD0	PR2_PRU1_GPI10	PR2_PRU1_GPO10	GPIO5_25
101	FPGA	B34	L2	-	IO_34_L4_N									
102	MFIO	1.8	-	V6	RGMII0_TXD1	RMII0_RXD1	MII0_RXD1	VIN2A_VSYNC0	VIN4B_VSYNC1	SPI4_D0	UART4_CTSN	PR1_MII0_RXD1	PR2_PRU1_GPI9	PR2_PRU1_PO9
103	GND	-	-	-	GND									

Pin	Type	Volt	fpga ball	57xx ball	Signal Option 1	Signal Option 2	Signal Option 3	Signal Option 4	Signal Option 5	Signal Option 6	Signal Option 7	Signal Option 8	Signal Option 9	Signal Option 10
104	MFIO	1.8	-	U7	RGMII0_TXD2	RMIIO_RXER	MII0_RXER	VIN2A_HSYN0	VIN4B_HSYNC1	SPI4_D1	UART4_TXD	PR1_MII0_RXER	PR2_PRU1_GPI8	PR2_PRU1_PO8
105	MFIO	1.8	-	Y1	SPI3_D1	UART3_TXD	RMI11_RXER	MII0_RXCLK	VIN2A_D2	VIN4B_D2	SPI4_CS1	PR1_MII0_MR0_CLK	PR2_PRU1_GPI4	PR2_PRU1_PO4
106	MFIO	1.8	-	V7	RGMII0_TXD3	RMIIO_CR S	MII0_CRS	VIN2A_DE0	VIN4B_DE1	SPI4_SCLK	UART4_RXD	PR1_MII0_CRS	PR2_PRU1_GPI7	PR2_PRU1_PO7
107	MFIO	1.8	-	V2	SPI3_SCLK	UART3_RXD	RMI11_CRS	MII0_RXDV	VIN2A_D1	VIN4B_D1	PR1_MII0_RXDV	PR2_PRU1_GPI3	PR2_PRU1_GPO3	GPIO5_18
108	MFIO	1.8	-	W9	RGMII0_TXC	UART3_CTSN	RMI11_RXD1	MII0_RXD3	VIN2A_D3	VIN4B_D3	SPI3_D0	SPI4_CS2	PR1_MII0_RXD3	PR2_PRU1_PI5
109	MFIO	3.3	-	Y9	MMC1_SDWP	UART6_TXD	I2C4_SCL	GPIO6_28						
110	MFIO	1.8	-	V9	RGMII0_TXCT L	UART3_RT SN	RMI11_RXD0	MII0_RXD2	VIN2A_D4	VIN4B_D4	SPI3_CS0	SPI4_CS3	PR1_MII0_RXD2	PR2_PRU1_PI6
111	MFIO	1.8	-	C14	PR2_MDIO_M DCLK	MCASP1_ ACLKX	VIN6A_FLD0	I2C3_SDA	PR2_PRU1_ GPI7	PR2_PRU1_ GPO7	GPIO7_31			
112	GND	-	-	-	GND									
113	MFIO	1.8	-	D14	PR2_MDIO_ DTA	MCASP1_ FSX	VIN6A_DE0	I2C3_SCL	GPIO7_30					
114	MFIO	1.8	-	V4	RGMII0_RXD3	RMI11_TXD 0	MII0_TXD2	VIN2A_D7	VIN4B_D7	PR1_MII0_TXD 2	PR2_PRU1_ GPI13	PR2_PRU1_ GPO13	GPIO5_28	
115	MFIO	1.8	-	G16	UART4_RXD	MCASP4_ AXR0	SPI3_D0	UART8_CTSN	VOUT2_D18	VIN4A_D18	VIN5A_D13			
116	MFIO	1.8	-	V3	RGMII0_RXD2	RMIIO_TXE N	MII0_TXEN	VIN2A_D8	PR1_MII0_ T XEN	PR2_PRU1_ G PI14	PR2_PRU1_ GPO14	GPIO5_29		
117	MFIO	1.8	-	E12	MCASP4_ AXR 2	MCASP1_ AXR4	VOUT2_D4	VIN4A_D4	GPIO5_6					
118	MFIO	1.8	-	Y2	RGMII0_RXD1	RMIIO_TXD 1	MII0_TXD1	VIN2A_D9	PR1_MII0_ T XD1	PR2_PRU1_ G PI15	PR2_PRU1_ GPO15	GPIO5_30		
119	MFIO	1.8	-	D17	MCASP4_ AXR 1	SPI3_CS0	UART8_ RTS N	UART4_TXD	VOUT2_D19	VIN4A_D19	VIN5A_D12	PR2_PRU1_ G PI0	PR2_PRU1_ GPO0	
120	MFIO	1.8	-	W2	RGMII0_RXD0	RMIIO_TXD 0	MII0_TXD0	VIN2A_FLD0	VIN4B_FLD1	PR1_MII0_TXD 0	PR2_PRU1_ GPI16	PR2_PRU1_ GPO16	GPIO5_31	
121	MFIO	1.8	-	C18	MCASP4_ ACL KX	MCASP4_ ACLKR	SPI3_SCLK	UART8_RXD	I2C4_SDA	VOUT2_D16	VIN4A_D16	VIN5A_D15		
122	MFIO	1.8	-	V5	RGMII0_RXCT L	RMI11_TXD 1	MII0_TXD3	VIN2A_D6	VIN4B_D6	PR1_MII0_TXD 3	PR2_PRU1_ GPI12	PR2_PRU1_ GPO12	GPIO5_27	
123	MFIO	1.8	-	A21	MCASP4_ FSX	MCASP4_ FSR	SPI3_D1	UART8_TXD	I2C4_SCL	VOUT2_D17	VIN4A_D17	VIN5A_D14		
124	MFIO	1.8	-	U5	RGMII0_RXC	RMI11_TXE N	MII0_TXCLK	VIN2A_D5	VIN4B_D5	PR1_MII0_ T O_CLK	PR2_PRU1_ GPI11	PR2_PRU1_ GPO11	GPIO5_26	
125	FPGA	1.8	F12	-	FPGA_DONE									
126	KEY	-	-	-										
127	KEY	-	-	-										
128	KEY	-	-	-										
129	KEY	-	-	-										

Pin	Type	Volt	fpga ball	57xx ball	Signal Option 1	Signal Option 2	Signal Option 3	Signal Option 4	Signal Option 5	Signal Option 6	Signal Option 7	Signal Option 8	Signal Option 9	Signal Option 10
130	KEY	-	-	-										
131	KEY	-	-	-										
132	KEY	-	-	-										
133	GND	-	-	-	GND									
134	GND	-	-	-	GND									
135	MFIO	1.8	-	J7	MMC2_CLK	GPMC_A23	GPMC_A17	VIN4A_FLD0	VIN3B_D4	GPIO2_13				
136	MFIO	1.8	-	D6	RGMII1_TXD0	VIN2A_D17	VIN2B_D6	VOUT2_D6	VIN3A_D9	MII1_TXD2	EHRPWM3A	PR1_MII1_RXD2	PR1_PRU1_GPI4	PR1_PRU1_PO14
137	MFIO	1.8	-	H6	MMC2_CMD	GPMC_CS1	GPMC_A22	VIN4A_DE0	VIN3B_VSYN C1	GPIO2_18				
138	MFIO	1.8	-	B2	RGMII1_TXD1	VIN2A_D16	VIN2B_D7	VOUT2_D7	VIN3A_D8	MII1_TXD1	EQEP3_STR OBE	PR1_MII1_RXD3	PR1_PRU1_GPI3	PR1_PRU1_PO13
139	MFIO	1.8	-	J4	MMC2_DAT0	GPMC_A24	GPMC_A18	VIN3B_D5	GPIO2_14					
140	MFIO	1.8	-	C4	RGMII1_TXD2	VIN2A_D15	VOUT2_D8	MII1_TXD0	EQEP3_IND EX	PR1_MII1_RX DV	PR1_PRU1_G PI12	PR1_PRU1_G PO12	GPIO4_16	
141	MFIO	1.8	-	J6	MMC2_DAT1	GPMC_A25	GPMC_A19	VIN3B_D6	GPIO2_15					
142	MFIO	1.8	-	C3	RGMII1_TXD3	VIN2A_D14	VOUT2_D9	MII1_TXCLK	EQEP3B_IN	PR1_MII1_MR1 _CLK	PR1_PRU1_G PI11	PR1_PRU1_G PO11	GPIO4_15	
143	MFIO	1.8	-	H4	MMC2_DAT2	GPMC_A26	GPMC_A20	VIN3B_D7	GPIO2_16					
144	MFIO	1.8	-	D5	RGMII1_TXC	VIN2A_D12	VOUT2_D11	MII1_RXCLK	KBD_COL8	ECAP2_IN_PW M2_OUT	PR1_MII1_T XD1	PR1_PRU1_G PI9	PR1_PRU1_GPO 9	GPIO4_13
145	MFIO	1.8	-	H5	MMC2_DAT3	GPMC_A27	GPMC_A21	VIN3B_HSYN C1	GPIO2_17					
146	MFIO	1.8	-	C2	RGMII1_TXCT L	VIN2A_D13	VOUT2_D10	MII1_RXDV	KBD_ROW8	EQEP3A_IN	PR1_MII1_T XD0	PR1_PRU1_G PI10	PR1_PRU1_GPO 10	GPIO4_14
147	MFIO	1.8	-	K7	GPMC_A19	MMC2_DA T4	GPMC_A13	VIN4A_D12	VIN3B_D0	GPIO2_9				
148	GND	-	-	-	GND									
149	MFIO	1.8	-	M7	GPMC_A20	MMC2_DA T5	GPMC_A14	VIN4A_D13	VIN3B_D1	GPIO2_10				
150	MFIO	1.8	-	B3	RGMII1_RXD3	VIN2A_D2 0	VIN2B_D3	VOUT2_D3	VIN3A_DE0	VIN3A_D12	MII1_RXER	ECAP3_IN_PW M3_OUT	PR1_MII1_RXER	PR1_PRU1_P I17
151	MFIO	1.8	-	J5	GPMC_A21	MMC2_DA T6	GPMC_A15	VIN4A_D14	VIN3B_D2	GPIO2_11				
152	MFIO	1.8	-	B4	RGMII1_RXD2	VIN2A_D2 1	VIN2B_D2	VOUT2_D2	VIN3A_FLD0	VIN3A_D13	MII1_COL	PR1_MII1_RXL INK	PR1_PRU1_GPI8	PR1_PRU1_PO18
153	MFIO	1.8	-	K6	GPMC_A22	MMC2_DA T7	GPMC_A16	VIN4A_D15	VIN3B_D3	GPIO2_12				
154	MFIO	1.8	-	B5	RGMII1_RXD1	VIN2A_D2 2	VIN2B_D1	VOUT2_D1	VIN3A_HSY N C0	VIN3A_D14	MII1_CRS	PR1_MII1_COL	PR1_PRU1_GPI9	PR1_PRU1_PO19
155	GND	-	-	-	GND									

Pin	Type	Volt	fpga ball	57xx ball	Signal Option 1	Signal Option 2	Signal Option 3	Signal Option 4	Signal Option 5	Signal Option 6	Signal Option 7	Signal Option 8	Signal Option 9	Signal Option 10
156	MFIO	1.8	-	A4	RGMII1_RXD0	VIN2A_D23	VIN2B_D0	VOUT2_D0	VIN3A_VSYNCO	VIN3A_D15	MII1_TXEN	PR1_MII1_CR0	PR1_PRU1_GPI20	PR1_PRU1_PO20
157	MFIO	1.8	-	U3	GPIO5_17	RMI1_MHZ50_CLK	VIN2A_D11	PR2_PRU1_GPI2	PR2_PRU1_GPO2					
158	MFIO	1.8	-	A3	RGMII1_RXCTL	VIN2A_D19	VIN2B_D4	VOUT2_D4	VIN3A_D11	MII1_TXER	EHRPWM3_TRIPZ_IN	PR1_MII1_RXD0	PR1_PRU1_GPI6	PR1_PRU1_PO16
159	MFIO	1.8	-	U4	MDIO_D	UART3_CTSN	MII0_TXER	VIN2A_D0	VIN4B_D0	PR1_MII0_RXLINK	PR2_PRU1_GPI1	PR2_PRU1_GPO1	GPIO5_16	
160	MFIO	1.8	-	C5	RGMII1_RXC	VIN2A_D18	VIN2B_D5	VOUT2_D5	VIN3A_D10	MII1_TXD3	EHRPWM3B	PR1_MII1_RXD1	PR1_PRU1_GPI5	PR1_PRU1_PO15
161	MFIO	1.8	-	V1	MDIO_MCLK	UART3_RT SN	MII0_COL	VIN2A_CLK0	VIN4B_CLK1	PR1_MII0_COL	PR2_PRU1_GPI0	PR2_PRU1_GPO0	GPIO5_15	
162	GND	-	-	-	GND									
163	MFIO	3.3	-	W7	MMC1_SDCD	UART6_RXD	I2C4_SDA	GPIO6_27						
164	MFIO	1.8	-	AC9	PR2_MII1_MR1_CLK	MMC3_DATA2	SPI3_CS0	UART5_CTSN	VIN2B_D3	VIN5A_D3	EQEP3_INDEX	PR2_PRU0_GPI6	PR2_PRU0_GPO6	GPIO7_1
165	MFIO	3.3	-	W6	MMC1_CLK	GPIO6_21								
166	MFIO	1.8	-	AC3	PR2_MII1_RXDV	MMC3_DATA3	SPI3_CS1	UART5_RTSN	VIN2B_D2	VIN5A_D2	EQEP3_STR OBE	PR2_PRU0_GPI7	PR2_PRU0_GPO7	GPIO7_2
167	MFIO	3.3	-	Y6	MMC1_CMD	GPIO6_22								
168	MFIO	1.8	-	E17	PR2_MII1_CRS	XREF_CLK1	MCASP2_AXR9	MCASP1_AXR5	MCASP2_AHCLKX	MCASP6_AHCLKX	VIN6A_CLK0	TIMER14	PR2_PRU1_GPI6	PR2_PRU1_PO6
169	MFIO	3.3	-	Y3	MMC1_DAT3	GPIO6_26								
170	MFIO	1.8	-	B19	PR2_MII1_RXER	MCASP3_AXR0	MCASP2_AXR14	UART7_CTSN	UART5_RXD	VIN6A_D1	PR2_PRU0_GPI14	PR2_PRU0_GPO14		
171	MFIO	3.3	-	AA5	MMC1_DAT2	GPIO6_25								
172	MFIO	1.8	-	D18	PR2_MII1_COL	XREF_CLK0	MCASP2_AXR8	MCASP1_AXR4	MCASP1_AHCLKX	MCASP5_AHCLKX	VIN6A_D0	HDQ0	CLKOUT2	TIMER13
173	MFIO	3.3	-	Y4	MMC1_DAT1	GPIO6_24								
174	MFIO	1.8	-	AB5	PR2_MII1_RXD0	MMC3_DATA7	SPI4_CS0	UART10_RTSN	VIN2B_CLK1	VIN5A_VSYNCO	ECAP3_IN_PWM3_OUT	PR2_PRU0_GPI11	PR2_PRU0_GPO11	GPIO1_25
175	MFIO	3.3	-	AA6	MMC1_DAT0	GPIO6_23								
176	MFIO	1.8	-	AB8	PR2_MII1_RXD1	MMC3_DATA6	SPI4_D0	UART10_CTSN	VIN2B_DE1	VIN5A_HSYNCO	EHRPWM3_TRIPZ_IN	PR2_PRU0_GPI10	PR2_PRU0_GPO10	GPIO1_24
177	GND	-	-	-	GND									
178	MFIO	1.8	-	AD6	PR2_MII1_RXD2	MMC3_DATA5	SPI4_D1	UART10_TXD	VIN2B_D0	VIN5A_D0	EHRPWM3B	PR2_PRU0_GPI9	PR2_PRU0_GPO9	GPIO1_23
179	MFIO	1.8	-	P4	GPMP_C_A12	VIN4A_CLK0	GPMP_C_A0	VIN4B_FLD1	TIMER8	SPI4_CS1	DMA_EVT1	GPIO2_2		
180	MFIO	1.8	-	AC8	PR2_MII1_RXD3	MMC3_DATA4	SPI4_SCLK	UART10_RXD	VIN2B_D1	VIN5A_D1	EHRPWM3A	PR2_PRU0_GPI8	PR2_PRU0_GPO8	GPIO1_22

Pin	Type	Volt	fpga ball	57xx ball	Signal Option 1	Signal Option 2	Signal Option 3	Signal Option 4	Signal Option 5	Signal Option 6	Signal Option 7	Signal Option 8	Signal Option 9	Signal Option 10
181	MFIO	1.8	-	N9	GPMC_A10	VIN3A_DE0	VOUT3_DE	VIN4B_CLK1	TIMER10	SPI4_D0	GPIO2_0			
182	MFIO	1.8	-	C17	PR2_MII1_RXL INK	MCASP3_AXR1	MCASP2_AXR15	UART7_RTSN	UART5_TXD	VIN6A_D0	VIN5A_FLD0	PR2_PRU0_GPI15	PR2_PRU0_GPO15	
183	MFIO	1.8	-	P9	GPMC_A11	VIN3A_FLD0	VOUT3_FLD	VIN4A_FLD0	VIN4B_DE1	TIMER9	SPI4_CS0	GPIO2_1		
184	MFIO	1.8	-	AC5	PR2_MII1_CLK	GPIO6_10	MDIO_MCLK	I2C3_SDA	VIN2B_HSYNC1	VIN5A_CLK0	EHRPWM2A	PR2_PRU0_GPI0	PR2_PRU0_GPO0	GPIO6_10
185	MFIO	1.8	-	P6	I2C5_SCL	GPMC_A4	QSPI1_CS3	VIN3A_D20	VOUT3_D20	VIN4A_D4	VIN4B_D4	UART6_RXD	GPIO1_26	
186	MFIO	1.8	-	AB4	PR2_MII1_TXEN	GPIO6_11	MDIO_D	I2C3_SCL	VIN2B_VSYNC1	VIN5A_DE0	EHRPWM2B	PR2_PRU0_GPI1	PR2_PRU0_GPO1	GPIO6_11
187	MFIO	1.8	-	P5	GPMC_A7	VIN3A_D23	VOUT3_D23	VIN4A_D7	VIN4B_D7	UART8_TXD	UART6_RTSN	GPIO1_29		
188	MFIO	1.8	-	AC6	PR2_MII1_TXD0	MMC3_DAT1	SPI3_D0	UART5_TXD	VIN2B_D4	VIN5A_D4	EQEP3B_IN	PR2_PRU0_GPI5	PR2_PRU0_GPO5	GPIO7_0
189	MFIO	1.8	-	G20	DCAN1_TX	UART8_RXD	MMC2_SDCD	HDMI1_HPD	GPIO1_14					
190	MFIO	1.8	-	AC7	PR2_MII1_TXD1	MMC3_DAT0	SPI3_D1	UART5_RXD	VIN2B_D5	VIN5A_D5	EQEP3A_IN	PR2_PRU0_GPI4	PR2_PRU0_GPO4	GPIO6_31
191	MFIO	1.8	-	G19	DCAN1_RX	UART8_TXD	MMC2_SDWP	SATA1_LED	HDMI1_CEC	GPIO1_15				
192	MFIO	1.8	-	AC4	PR2_MII1_TXD2	MMC3_CMD	SPI3_SCLK	VIN2B_D6	VIN5A_D6	ECAP2_IN_PWM2_OUT	PR2_PRU0_GPI3	PR2_PRU0_GPO3	GPIO6_30	
193	MFIO	1.8	-	F20	UART10_TXD	GPIO6_15	MCASP1_AXR9	DCAN2_RX	VOUT2_VSYNC	VIN4A_VSYNC0	I2C3_SCL	TIMER2	GPIO6_15	
194	MFIO	1.8	-	AD4	PR2_MII1_TXD3	MMC3_CLK	VIN2B_D7	VIN5A_D7	EHRPWM2_TRIPZ_IN	PR2_PRU0_GPI2	PR2_PRU0_GPO2	GPIO6_29		
195	MFIO	1.8	-	G17	SPI2_D0	UART3_CTSN	UART5_RXD	GPIO7_16						
196	GND	-	-	-	GND									
197	MFIO	1.8	-	E15	MCASP2_ACLKR	MCASP8_AXR2	VOUT2_D8	VIN4A_D8						
198	MFIO	1.8	-	A13	PR2_MII1_CLK	MCASP1_AXR13	MCASP7_AXR1	VIN6A_D10	TIMER10	PR2_PRU1_GPI15	PR2_PRU1_GPO15	GPIO6_4		
199	MFIO	1.8	-	F16	SPI1_D1	GPIO7_8								
200	MFIO	1.8	-	G14	PR2_MII0_RXDV	MCASP1_AXR14	MCASP7_ACLKX	MCASP7_ACLKR	VIN6A_D9	TIMER11	PR2_PRU1_GPI16	PR2_PRU1_GPO16	GPIO6_5	
201	MFIO	1.8	-	C26	UART1_TXD	MMC4_SDW	GPIO7_23							
202	MFIO	1.8	-	B18	PR2_MII0_CRS	MCASP3_ACLKX	MCASP3_ACLKR	MCASP2_AXR12	UART7_RXD	VIN6A_D3	PR2_PRU0_GPI12	PR2_PRU0_GPO12	GPIO5_13	
203	MFIO	1.8	-	T6	GPMC_A2	VIN3A_D18	VOUT3_D18	VIN4A_D2	VIN4B_D2	UART7_RXD	UART5_CTSN	GPIO7_5		
204	MFIO	1.8	-	G12	PR2_MII0_RXER	MCASP1_AXR0	UART6_RXD	VIN6A_VSYNC0	I2C5_SDA	PR2_PRU1_GPI8	PR2_PRU1_GPO8	GPIO5_2		
205	MFIO	1.8	-	T7	GPMC_A3	QSPI1_CS2	VIN3A_D19	VOUT3_D19	VIN4A_D3	VIN4B_D3	UART7_TXD	UART5_RTSN	GPIO7_6	
206	MFIO	1.8	-	F15	PR2_MII0_COL	MCASP3_FSX	MCASP3_FSR	MCASP2_AXR13	UART7_TXD	VIN6A_D2	PR2_PRU0_GPI13	PR2_PRU0_GPO13	GPIO5_14	

Pin	Type	Volt	fpga ball	57xx ball	Signal Option 1	Signal Option 2	Signal Option 3	Signal Option 4	Signal Option 5	Signal Option 6	Signal Option 7	Signal Option 8	Signal Option 9	Signal Option 10
207	MFIO	1.8	-	R9	I2C5_SDA	GPMC_A5	VIN3A_D21	VOUT3_D21	VIN4A_D5	VIN4B_D5	UART6_TXD	GPIO1_27		
208	MFIO	1.8	-	C15	PR2_MII0_RX D0	MCASP2_AXR2	MCASP3_AX R2	VIN6A_D5	PR2_PRU0_ GPI16	PR2_PRU0_G PO16	GPIO6_8			
209	MFIO	1.8	-	T9	I2C4_SDA	GPMC_A1	VIN3A_D17	VOUT3_D17	VIN4A_D1	VIN4B_D1	UART5_TXD	GPIO7_4		
210	MFIO	1.8	-	A18	PR2_MII0_RX D1	MCASP2_ FSX	VIN6A_D6	PR2_PRU0_ G PI19	PR2_PRU0_ GPO19					
211	MFIO	1.8	-	G13	MCASP1_AXR 2	MCASP6_ AXR2	UART6_CTS N	VOUT2_D2	VIN4A_D2	GPIO5_4				
212	MFIO	1.8	-	A19	PR2_MII0_RX D2	MCASP2_ ACLKX	VIN6A_D7	PR2_PRU0_ G PI18	PR2_PRU0_ GPO18					
213	MFIO	1.8	-	J11	MCASP1_AXR 3	MCASP6_ AXR3	UART6_RTS N	VOUT2_D3	VIN4A_D3	GPIO5_5				
214	MFIO	1.8	-	F14	PR2_MII0_RX D3	MCASP1_ AXR15	MCASP7_ FS X	MCASP7_ FSR	VIN6A_D8	TIMER12	PR2_PRU0_ GPI20	PR2_PRU0_ G PO20	GPIO6_6	
215	MFIO	1.8	-	N7	GPMC_A8	VIN3A_HS YNC0	VOUT3_HSY NC	VIN4B_HSYNC 1	TIMER12	SPI4_SCLK	GPIO1_30			
216	MFIO	1.8	-	A16	PR2_MII0_RXL INK	MCASP2_ AXR3	MCASP3_AX R3	VIN6A_D4	PR2_PRU0_ GPI17	PR2_PRU0_G PO17	GPIO6_9			
217	MFIO	1.8	-	R4	GPMC_A9	VIN3A_VS YNC0	VOUT3_VSY NC	VIN4B_VSYNC 1	TIMER11	SPI4_D1	GPIO1_31			
218	MFIO	1.8	-	F12	PR2_MII0_MTO_ CLK	MCASP1_ AXR1	UART6_TXD	VIN6A_HSYNC 0	I2C5_SCL	PR2_PRU1_ G PI9	PR2_PRU1_ GPO9	GPIO5_3		
219	MFIO	1.8	-	R5	GPMC_A6	VIN3A_D2 2	VOUT3_D22	VIN4A_D6	VIN4B_D6	UART8_RXD	UART6_CTS N	GPIO1_28		
220	MFIO	1.8	-	B12	PR2_MII0_TXE N	MCASP1_ AXR8	MCASP6_AX R0	SPI3_SCLK	VIN6A_D15	TIMER5	PR2_PRU1_ GPI10	PR2_PRU1_G PO10	GPIO5_10	
221	MFIO	1.8	-	R6	I2C4_SCL	GPMC_A0	VIN3A_D16	VOUT3_D16	VIN4A_D0	VIN4B_D0	UART5_RXD	GPIO7_3		
222	MFIO	1.8	-	E14	PR2_MII0_TXD 0	MCASP1_ AXR12	MCASP7_AX R0	SPI3_CS1	VIN6A_D11	TIMER9	PR2_PRU1_ GPI14	PR2_PRU1_G PO14	GPIO4_18	
223	MFIO	1.8	-	F21	GPIO6_16	MCASP1_ AXR10	VOUT2_FLD	VIN4A_FLD0	CLKOUT1	TIMER3	GPIO6_16			
224	MFIO	1.8	-	A12	PR2_MII0_TXD 1	MCASP1_ AXR11	MCASP6_FS X	MCASP6_ FSR	SPI3_CS0	VIN6A_D12	TIMER8	PR2_PRU1_ G PI13	PR2_PRU1_GPO 13	GPIO4_17
225	GND	-	-	-	GND									
226	MFIO	1.8	-	B13	PR2_MII0_TXD 2	MCASP1_ AXR10	MCASP6_AC LKX	MCASP6_ACL KR	SPI3_D0	VIN6A_D13	TIMER7	PR2_PRU1_ G PI12	PR2_PRU1_GPO 12	GPIO5_12
227	MFIO	1.8	-	E21	UART10_RXD	GPIO6_14	MCASP1_AX R8	DCAN2_TX	VOUT2_HSY NC	VIN4A_HSYNC 0	I2C3_SDA	TIMER1	GPIO6_14	
228	MFIO	1.8	-	A11	PR2_MII0_TXD 3	MCASP1_ AXR9	MCASP6_AX R1	SPI3_D1	VIN6A_D14	TIMER6	PR2_PRU1_ GPI11	PR2_PRU1_G PO11	GPIO5_11	
229	MFIO	1.8	-	B22	SPI2_D1	UART3_TX D	GPIO7_15							
230	GND	-	-	-	GND									
231	MFIO	1.8	-	D28	UART2_RXD	UART3_CT SN	UART3_RCT X	MMC4_DAT0	UART1_DCD N	GPIO7_26				
232	MFIO	1.8	-	AC1 0	USB2_DRVVB US	TIMER15	GPIO6_13							

Pin	Type	Volt	fpga ball	57xx ball	Signal Option 1	Signal Option 2	Signal Option 3	Signal Option 4	Signal Option 5	Signal Option 6	Signal Option 7	Signal Option 8	Signal Option 9	Signal Option 10
233	MFIO	1.8	-	D26	UART2_TXD	UART3_RT SN	UART3_SD	MMC4_DAT1	UART1_DSR N	GPIO7_27				
234	MFIO	1.8	-	E25	GPIO7_24	UART1_CT SN	UART9_RXD	MMC4_CLK						
235	MFIO	1.8	-	G2	VIN2A_DE0	VIN2A_FL D0	VIN2B_FLD1	VIN2B_DE1	VOUT2_DE	EMU6	KBD_ROW1	EQEP1B_IN	PR1_EDIO_DATA_IN1	PR1_EDIO_DATA_OUT1
236	MFIO	1.8	-	AE11	USB2_DP									
237	MFIO	1.8	-	G1	GPIO3_31	VIN2A_HSYNCO	VIN2B_HSYN C1	VOUT2_HSYN C	EMU8	UART9_RXD	SPI4_SCLK	KBD_ROW2	EQEP1_STROBE	PR1_UART0_TS_N
238	MFIO	1.8	-	AF11	USB2_DM									
239	MFIO	1.8	-	F3	VIN2A_D1	VOUT2_D2 2	EMU11	UART9_RTSN	SPI4_CS0	KBD_ROW5	EHRPWM1_TRIPZ_IN	PR1_UART0_TXD	PR1_EDIO_DATA_IN6	PR1_EDIO_DATA_OUT6
240	PWR	+5V	-	-	USB2_VBUS									
241	MFIO	1.8	-	F2	VIN2A_D0	VOUT2_D2 3	EMU10	UART9_CTSN	SPI4_D0	KBD_ROW4	EHRPWM1B	PR1_UART0_RXD	PR1_EDIO_DATA_IN5	PR1_EDIO_DATA_OUT5
242	GND	-	-	-	GND									
243	MFIO	1.8	-	E1	VIN2A_CLK0	VOUT2_FL D	EMU5	KBD_ROW0	EQEP1A_IN	PR1_EDIO_DATA_IN0	PR1_EDIO_DATA_OUT0	GPIO3_28		
244	MFIO	1.8	-	J14	GPIO5_1	MCASP1_FSR	MCASP7_AX R3	VOUT2_D1	VIN4A_D1	I2C4_SCL				
245	MFIO	1.8	-	E2	VIN2A_D3	VOUT2_D2 0	EMU13	UART10_TXD	KBD_COL0	EHRPWM1_SY NCI	PR1_EDC_L ATCH0_IN	PR1_PRU1_G PI0	PR1_PRU1_GPO 0	GPIO4_4
246	MFIO	1.8	-	F13	GPIO5_7	MCASP1_AXR5	MCASP4_AX R3	VOUT2_D5	VIN4A_D5					
247	MFIO	1.8	-	D1	VIN2A_D2	VOUT2_D2 1	EMU12	UART10_RXD	KBD_ROW6	ECAP1_IN_PWM1_OUT	PR1_ECAP0 ECAP_CAPI N_APWM_O	PR1_EDIO_DATA_IN7	PR1_EDIO_DATA_OUT7	GPIO4_3
248	MFIO	1.8	-	C12	GPIO5_8	MCASP1_AXR6	MCASP5_AX R2	VOUT2_D6	VIN4A_D6					
249	MFIO	1.8	-	D2	UART10_CTS N	VIN2A_D4	VOUT2_D19	EMU14	KBD_COL1	EHRPWM1_SY NCO	PR1_EDC_S YNC0_OUT	PR1_PRU1_G PI1	PR1_PRU1_GPO 1	GPIO4_5
250	MFIO	1.8	-	H7	GPIO3_30	VIN2A_FL D0	VIN2B_CLK1	VOUT2_CLK	EMU7	EQEP1_INDEX	PR1_EDIO_DATA_IN2	PR1_EDIO_DATA_OUT2		
251	MFIO	1.8	-	C1	VIN2A_D6	VOUT2_D1 7	EMU16	MII1_RXD1	KBD_COL3	EQEP2B_IN	PR1_MII1_MT 1_CLK	PR1_PRU1_G PI3	PR1_PRU1_GPO 3	GPIO4_7
252	MFIO	1.8	-	B14	GPIO5_0	MCASP1_ACLKR	MCASP7_AX R2	VOUT2_D0	VIN4A_D0	I2C4_SDA				
253	MFIO	1.8	-	D3	VIN2A_D10	MDIO_MCLK	VOUT2_D13	KBD_COL7	EHRPWM2B	PR1_MDIO_M DCLK	PR1_PRU1_G PI7	PR1_PRU1_G PO7	GPIO4_11	
254	MFIO	1.8	-	A15	MCASP2_AXR 1	VOUT2_D1 1	VIN4A_D11							
255	MFIO	1.8	-	E4	VIN2A_D7	VOUT2_D1 6	EMU17	MII1_RXD2	KBD_COL4	EQEP2_INDEX	PR1_MII1_T XEN	PR1_PRU1_G PI4	PR1_PRU1_GPO 4	GPIO4_8
256	MFIO	1.8	-	B15	MCASP2_AXR 0	VOUT2_D1 0	VIN4A_D10							
257	MFIO	1.8	-	F4	UART10_RTS N	VIN2A_D5	VOUT2_D18	EMU15	KBD_COL2	EQEP2A_IN	PR1_EDIO_S OF	PR1_PRU1_G PI2	PR1_PRU1_GPO 2	GPIO4_6

Pin	Type	Volt	fpga ball	57xx ball	Signal Option 1	Signal Option 2	Signal Option 3	Signal Option 4	Signal Option 5	Signal Option 6	Signal Option 7	Signal Option 8	Signal Option 9	Signal Option 10
258	MFIO	1.8	-	D15	MCASP8_AXR0	MCASP2_AXR4	VOUT2_D12	VIN4A_D12	GPIO1_4					
259	MFIO	1.8	-	F5	VIN2A_D8	VOUT2_D15	EMU18	MII1_RXD3	KBD_COL5	EQEP2_STROBE	PR1_MII1_TXD3	PR1_PRU1_GPI5	PR1_PRU1_GPO5	GPIO4_9
260	MFIO	1.8	-	C23	MCASP8_AHCLKX	XREF_CLK3	MCASP2_AXR11	MCASP1_AXR7	MCASP4_AHCLKX	VOUT2_DE	HDQ0	VIN4A_DE0	CLKOUT3	TIMER16
261	MFIO	1.8	-	E6	VIN2A_D9	VOUT2_D14	EMU19	MII1_RXD0	KBD_COL6	EHRPWM2A	PR1_MII1_TXD2	PR1_PRU1_GPI6	PR1_PRU1_GPO6	GPIO4_10
262	MFIO	1.8	-	B16	MCASP8_AXR1	MCASP2_AXR5	VOUT2_D13	VIN4A_D13	GPIO6_7					
263	MFIO	1.8	-	F6	VIN2A_D11	MDIO_D	VOUT2_D12	KBD_ROW7	EHRPWM2_TRIPZONE_INPUT	PR1_MDIO_DATA	PR1_PRU1_GPI8	PR1_PRU1_GPO8	GPIO4_12	
264	MFIO	1.8	-	A17	MCASP8_FSX	MCASP2_AXR7	MCASP8_FSR	VOUT2_D15	VIN4A_D15	GPIO1_5				
265	MFIO	1.8	-	G6	VIN2A_VSYNC0	VIN2B_VSYN1	VOUT2_VSYN1	EMU9	UART9_TXD	SPI4_D1	KBD_ROW3	EHRPWM1A	PR1_UART0_RTS_N	PR1_EDIO_TA_IN4
266	MFIO	1.8	-	B17	MCASP8_ACLKX	MCASP2_AXR6	MCASP8_ACLKR	VOUT2_D14	VIN4A_D14	GPIO2_29				
267	MFIO	1.8	-	B10	VOUT1_DE	VIN4A_DE0	VIN3A_DE0	SPI3_D1	GPIO4_20					
268	MFIO	1.8	-	A20	MCASP2_FSR	MCASP8_AXR3	VOUT2_D9	VIN4A_D9						
269	MFIO	1.8	-	D11	VOUT1_CLK	VIN4A_FL D0	VIN3A_FLD0	SPI3_CS0	GPIO4_19					
270	MFIO	1.8	-	B24	SPI2_CS0	UART3_RTSN	UART5_TXD	GPIO7_17						
271	MFIO	1.8	-	E11	VOUT1_VSYN C	VIN4A_VSYN C0	VIN3A_VSYN C0	SPI3_SCLK	PR2_PRU1_GPI17	PR2_PRU1_GPO17	GPIO4_23			
272	MFIO	1.8	-	A25	SPI1_SCLK	GPIO7_7								
273	MFIO	1.8	-	D12	MCASP1_AXR7	MCASP5_AXR3	VOUT2_D7	VIN4A_D7	TIMER4	GPIO5_9				
274	MFIO	1.8	-	B25	SPI1_D0	GPIO7_9								
275	MFIO	1.8	-	B27	UART1_RXD	MMC4_SDCD	GPIO7_22							
276	MFIO	1.8	-	A26	SPI2_SCLK	UART3_RXD	GPIO7_14							
277	GND	-	-	-	GND									
278	MFIO	1.8	-	B26	XREF_CLK2	MCASP2_AXR10	MCASP1_AXR6	MCASP3_AHCLKX	MCASP7_AHCLKX	VOUT2_CLK	VIN4A_CLK0	TIMER15	GPIO6_19	
279	MFIO	1.8	-	D27	UART3_RXD	UART2_CTSN	MMC4_DAT2	UART10_RXD	UART1_DTRN	GPIO1_16				
280	GND	-	-	-	GND									
281	MFIO	1.8	-	C28	UART3_TXD	UART2_RTSN	UART3_IRTX	MMC4_DAT3	UART10_TXD	UART1_RIN	GPIO1_17			
E1-1	PWR	5.0	-	-	VDD_5V0									

Pin	Type	Volt	fpga ball	57xx ball	Signal Option 1	Signal Option 2	Signal Option 3	Signal Option 4	Signal Option 5	Signal Option 6	Signal Option 7	Signal Option 8	Signal Option 9	Signal Option 10
E1-2	PWR	5.0	-	-	VDD_5V0									
E1-3	PWR	5.0	-	-	VDD_5V0									
E1-4	PWR	5.0	-	-	VDD_5V0									
E1-5	GND	-	-	-	GND									
E1-6	GND	-	-	-	GND									
E1-7	GND	-	-	-	GND									
E1-8	PWR	B34	-	-	VCCIO_34_EXT									
E1-9	PWR	B34	-	-	VCCIO_34_EXT									
E1-10	NC	-	-	-										
E2-1	PWR	5.0	-	-	VDD_5V0									
E2-2	PWR	5.0	-	-	VDD_5V0									
E2-3	PWR	5.0	-	-	VDD_5V0									
E2-4	PWR	5.0	-	-	VDD_5V0									
E2-5	GND	-	-	-	GND									
E2-6	GND	-	-	-	GND									
E2-7	PWR	B15	-	-	VCCO_15_EXT									
E2-8	PWR	B15	-	-	VCCO_15_EXT									
E2-9	OUT	1.8	-	-	VDD_1V8F									
E2-10	NC	-	-	-										
E3-1	NC	-	-	-										
E3-2	OUT	3.3	-	-	PS_3V3									
E3-3	OUT	3.3	-	-	PS_3V3									
E3-4	PMIO	-	-	-	AUXFAN_EN									
E3-5	FF	3.3	-	-	PB_RESETh									
E3-6	PMIO	-	-	-	PMIC_POWER_GOOD									
E3-7	PMIO	-	-	-	PMIC_POWER_HOLD									

Pin	Type	Volt	fpga ball	57xx ball	Signal Option 1	Signal Option 2	Signal Option 3	Signal Option 4	Signal Option 5	Signal Option 6	Signal Option 7	Signal Option 8	Signal Option 9	Signal Option 10
E3-8	GND	-	-	-	GND									
E3-9	FPGA	B15	A17	-	IO_15_L15_N									
E3-10	FPGA	B15	B16	-	IO_15_L15_P									
E4-1	NC	-	-	-										
E4-2	OUT	-	-	-	VDD_1V8F									
E4-3	OUT	-	-	-	VDD_1V8F									
E4-4	MFIO	1.8	-	-	WAKEUP1	DCAN2_RX	GPIO1_1							
E4-5	GND	-	-	-	GND									
E4-6	FPGA	B15	A9	-	IO_15_L3_N	AD1N								
E4-7	FPGA	B15	B9	-	IO_15_L3_P	AD1P								
E4-8	FPGA	B15	A10	-	IO_15_L5_N	AD9P								
E4-9	FPGA	B15	B10	-	IO_15_L5_P	AD9N								
E4-10	FPGA	B15	C17	-	IO_15_L18_P									

Hirose 100 Pin Interface Description (J3)

The second interface connector for the MitySOM-AM57F is a Hirose DF40C-100DP-0.4V(51) 100 pin board-to-board interface which contains 6 types of signals:

- Power input and ground/return (PWR / GND)
- Pins mapped to the Xilinx Artix-7 Device (FPGA)
- Transceiver pins mapped to the Xilinx Artix-7 Device (XCVR)
- Multi-function signals mapped to the AM57XX device (MFIO)
- Module fixed-function pins (FF)
- Dedicated signals mapped to the Power Management IC (PMIC)

Table 7 contains a summary of the MitySOM-AM57F 100 Pin Hirose connector pin mapping which includes:

- Connector pin assignment
- Voltage domains
- FPGA or AM57XX ball for direct connect pins
- Signal Options / name for each pin

Table 7 J3 Pin-Out

Pin	Type	V	FPGA Ball	AM5728 Ball	Signal Option 1	Signal Option 2	Signal Option 3	Signal Option 4	Signal Option 5	Signal Option 6	Signal Option 7
1	GND	-	-	-	GND						
2	GND	-	-	-	GND						
3	FF	-	-	AH19	HDMI1_DATA2Y						
4	MFIO	1.8	-	B21	HDMI1_HPD	SPI1_CS2	UART4_RXD	MMC3_SDCD	SPI2_CS2	DCAN2_TX	MDIO_MCLK
5	FF	-	-	AG19	HDMI1_DATA2X						
6	MFIO	1.8	-	B20	HDMI1_CEC	SPI1_CS3	UART4_TXD	MMC3_SDWP	SPI2_CS3	DCAN2_RX	MDIO_D
7	GND	-	-	-	GND						
8	MFIO	1.8	-	C25	HDMI1_DDC_SCL	I2C2_SDA					
9	FF	-	-	AH18	HDMI1_DATA1Y						
10	MFIO	1.8	-	F17	HDMI1_DDC_SDA	I2C2_SCL					
11	FF	-	-	AG18	HDMI1_DATA1X						
12	MFIO	1.8	-	A24	SPI1_CS0	GPIO7_10					
13	GND	-	-	-	GND						
14	MFIO	1.8	-	AG8	VIN1A_CLK0	VOUT3_D16	VOUT3_FLD	GPIO2_30			
15	FF	-	-	AH17	HDMI1_DATA0Y						
16	GND	-	-	-	GND						
17	FF	-	-	AG17	HDMI1_DATA0X						
18	MFIO	1.8	-	AA3	MCASP5_ACLKX	MCASP5_ACLKR	SPI4_SCLK	UART9_RXD	I2C5_SDA	VOUT2_D20	VIN4A_D20
19	GND	-	-	-	GND						
20	MFIO	1.8	-	AB9	MCASP5_FSX	MCASP5_FSR	SPI4_D1	UART9_TXD	I2C5_SCL	VOUT2_D21	VIN4A_D21
21	FF	-	-	AH16	HDMI1_CLOCKY						
22	MFIO	1.8	-	AD9	GPIO3_0	VIN1A_DE0	VIN1B_HSYNC1	VOUT3_D17	VOUT3_DE	UART7_RXD	TIMER16
23	FF	-	-	AG16	HDMI1_CLOCKX						
24	MFIO	1.8	-	AD8	GPIO3_5	VIN1A_D1	VOUT3_D6	VOUT3_D22	UART8_TXD	EHRPWM1B	
25	GND	-	-	-	GND						

Pin	Type	V	FPGA Ball	AM5728 Ball	Signal Option 1	Signal Option 2	Signal Option 3	Signal Option 4	Signal Option 5	Signal Option 6	Signal Option 7	
26	MFIO	1.8	-	AF8	GPIO3_3	VIN1A_VSYNC0	VIN1B_DE1	VOUT3_VSYNC	UART7_RTSN	TIMER13	SPI3_CS0	E
27	FF	-	-	AC11	USB1_SSRX_N							
28	MFIO	1.8	-	AE8	GPIO3_4	VIN1A_D0	VOUT3_D7	VOUT3_D23	UART8_RXD	EHRPWM1A		
29	FF	-	-	AD11	USB1_SSRX_P							
30	MFIO	1.8	-	AF6	VIN1A_D13	VIN1B_D2	VOUT3_D10	GPMC_A25	KBD_ROW7	PR1_EDC_SYNC1_OUT	PR1_PRU0_GPI10	P
31	GND	-	-	-	GND							
32	MFIO	1.8	-	AE6	VIN1A_D21	VIN1B_D2	VOUT3_D2	VIN3A_D5	KBD_COL6	PR1_EDIO_DATA_IN5	PR1_EDIO_DATA_OUT5	P
33	FF	-	-	AF12	USB1_SSTX_N							
34	MFIO	1.8	-	AA4	MCASP5_AXR1	SPI4_CS0	UART9_RTSN	UART3_TXD	VOUT2_D23	VIN4A_D23	VIN5A_D8	P
35	FF	-	-	AE12	USB1_SSTX_P							
36	MFIO	1.8	-	AB3	MCASP5_AXR0	SPI4_D0	UART9_CTSN	UART3_RXD	VOUT2_D22	VIN4A_D22	VIN5A_D9	P
37	GND	-	-	-	GND							
38	MFIO	1.8	-	AE9	GPIO3_2	VIN1A_HSYNC0	VIN1B_FLD1	VOUT3_HSYNC	UART7_CTSN	TIMER14	SPI3_D0	E
39	MFIO	1.8	-	C27	GPIO7_25	UART1_RTSN	UART9_TXD	MMC4_CMD				
40	MFIO	1.8	-	AF9	GPIO3_1	VIN1A_FLD0	VIN1B_VSYNC1	VOUT3_CLK	UART7_TXD	TIMER15	SPI3_D1	I
41	MFIO	1.8	-	AB10	USB1_DRVVBUS	TIMER16	GPIO6_12					
42	MFIO	1.8	-	AG7	GPIO3_6	VIN1A_D2	VOUT3_D5	VOUT3_D21	UART8_CTSN	EHRPWM1_TRIPZONE_INPUT		
43	FF	-	-	AC12	USB1_DM							
44	MFIO	1.8	-	AH7	VIN1B_CLK1	VIN3A_CLK0	GPIO2_31					
45	FF	-	-	AD12	USB1_DP							
46	MFIO	1.8	-	AG6	VIN1A_D6	VOUT3_D1	VOUT3_D17	EQEP2A_IN	PR1_PRU0_GPI3	PR1_PRU0_GPO3	GPIO3_10	
47	GND	-	-	-	GND							
48	MFIO	1.8	-	AH6	VIN1A_D3	VOUT3_D4	VOUT3_D20	UART8_RTSN	ECAP1_IN_PWM1_OUT	PR1_PRU0_GPI0	PR1_PRU0_GPO0	
49	FF	-	-	AH10	SATA1_TXP0							
50	MFIO	1.8	-	AG5	VIN1A_D11	VIN1B_D4	VOUT3_D12	GPMC_A23	KBD_ROW5	PR1_EDC_LATCH1_IN	PR1_PRU0_GPI8	P
51	FF	-	-	AG10	SATA1_TXN0							

Pin	Type	V	FPGA Ball	AM5728 Ball	Signal Option 1	Signal Option 2	Signal Option 3	Signal Option 4	Signal Option 5	Signal Option 6	Signal Option 7
52	MFIO	1.8	-	AH5	VIN1A_D5	VOUT3_D2	VOUT3_D18	EHRPWM1_SYNCO	PR1_PRU0_GPI2	PR1_PRU0_GPO2	GPI03_9
53	GND	-	-	-	GND						
54	MFIO	1.8	-	AG4	VIN1A_D8	VIN1B_D7	VOUT3_D15	KBD_ROW2	EQEP2_INDEX	PR1_PRU0_GPI5	PR1_PRU0_GPO5
55	FF	-	-	AH9	SATA1_RXN0						
56	MFIO	1.8	-	AH4	VIN1A_D7	VOUT3_D0	VOUT3_D16	EQEP2B_IN	PR1_PRU0_GPI4	PR1_PRU0_GPO4	GPI03_11
57	FF	-	-	AG9	SATA1_RXP0						
58	MFIO	1.8	-	AG3	VIN1A_D10	VIN1B_D5	VOUT3_D13	KBD_ROW4	PR1_EDC_LATCH_0_IN	PR1_PRU0_GPI7	PR1_PRU0_GPO7
59	GND	-	-	-	GND						
60	MFIO	1.8	-	AH3	VIN1A_D4	VOUT3_D3	VOUT3_D19	EHRPWM1_SYNCI	PR1_PRU0_GPI1	PR1_PRU0_GPO1	GPI03_8
61	MFIO	1.8	-	AE3	VIN1A_D17	VIN1B_D6	VOUT3_D6	VIN3A_D1	KBD_COL2	PR1_EDIO_DATA_IN1	PR1_EDIO_DATA_OUT1
62	MFIO	1.8	-	AG2	VIN1A_D9	VIN1B_D6	VOUT3_D14	KBD_ROW3	EQEP2_STROBE	PR1_PRU0_GPI6	PR1_PRU0_GPO6
63	MFIO	1.8	-	AF4	VIN1A_D15	VIN1B_D0	VOUT3_D8	GPMC_A27	KBD_COL0	PR1_EDIO_SOF	PR1_PRU0_GPI12
64	MFIO	1.8	-	AF2	VIN1A_D12	VIN1B_D3	VOUT3_D11	GPMC_A24	KBD_ROW6	PR1_EDC_SYNC0_OUT	PR1_PRU0_GPI9
65	MFIO	1.8	-	AE5	VIN1A_D18	VIN1B_D5	VOUT3_D5	VIN3A_D2	KBD_COL3	PR1_EDIO_DATA_IN2	PR1_EDIO_DATA_OUT2
66	MFIO	1.8	-	AF1	VIN1A_D16	VIN1B_D7	VOUT3_D7	VIN3A_D0	KBD_COL1	PR1_EDIO_DATA_IN0	PR1_EDIO_DATA_OUT0
67	MFIO	1.8	-	AD3	VIN1A_D23	VIN1B_D0	VOUT3_D0	VIN3A_D7	KBD_COL8	PR1_EDIO_DATA_IN7	PR1_EDIO_DATA_OUT7
68	MFIO	1.8	-	AF3	VIN1A_D14	VIN1B_D1	VOUT3_D9	GPMC_A26	KBD_ROW8	PR1_EDIO_LATCH_IN	PR1_PRU0_GPI11
69	GND	-	-	-	GND						
70	MFIO	1.8	-	AE2	VIN1A_D20	VIN1B_D3	VOUT3_D3	VIN3A_D4	KBD_COL5	PR1_EDIO_DATA_IN4	PR1_EDIO_DATA_OUT4
71	XCVR	-	D6	-	FPGA_GXB_REF_CLK_P						
72	MFIO	1.8	-	AD2	VIN1A_D22	VIN1B_D1	VOUT3_D1	VIN3A_D6	KBD_COL7	PR1_EDIO_DATA_IN6	PR1_EDIO_DATA_OUT6
73	XCVR	-	D5	-	FPGA_GXB_REF_CLK_N						
74	FF	-	-	-	AM57_BOOT_MODE						
75	GND	-	-	-	GND						
76	PWR	-	-	K14	OTP_VPP1						
77	XCVR	-	C3	-	FPGA_GXB_TX0_N						



Pin	Type	V	FPGA Ball	AM5728 Ball	Signal Option 1	Signal Option 2	Signal Option 3	Signal Option 4	Signal Option 5	Signal Option 6	Signal Option 7
78	GND	-	-	-	GND						
79	XCVR		C4	-	FPGA_GXB_TX0_P						
80	FF		-	AC1	RESERVED (NC)						
81	GND	-	-	-	GND						
82	FF		-	AC2	RESERVED (NC)						
83	XCVR		D1	-	FPGA_GXB_RX0_N						
84	FF		-	AB1	RESERVED (NC)						
85	XCVR		D2	-	FPGA_GXB_RX0_P						
86	FF		-	AB2	RESERVED (NC)						
87	GND	-	-	-	GND						
88	FF		-	AA1	RESERVED (NC)						
89	XCVR		G3	-	FPGA_GXB_TX1_N						
90	FF		-	AA2	RESERVED (NC)						
91	XCVR		G4	-	FPGA_GXB_TX1_P						
92	GND	-	-	-	GND						
93	GND	-	-	-	GND						
94	FF		M9	-	FPGA_DNX						
95	XCVR		B1	-	FPGA_GXB_RX1_N						
96	FF		M10	-	FPGA_DXP						
97	XCVR		B2	-	FPGA_GXB_RX1_P						
98	FF		L9	-	FPGA_VN_0						
99	GND	-	-	-	GND						
100	FF		K10	-	FPGA_VP_0						

Note1: The OTP_VPP signal, K14, should typically be left floating. Please contact your Critical Link representative for further questions about the usage of this pin.

DEBUG INTERFACE

Both the JTAG interface signals for the FPGA and the JTAG and emulator signals for the AM57xx processor have been brought out to a Hirose connector (DF9-31P-1V(32)), J2, which is intended for use with an available breakout adapter, Critical Link part number 80-000286. This adapter is not included with individual modules but is included with each Critical Link Development Kit that is ordered. Additional adapters are available through Critical Link distribution partners.

Debug Interface Connector Description (J2)

Table 8: MitySOM-AM57F Debug Hirose Connector (J2)

Pin	I/O	Signal	Pin	I/O	Signal
1	-	GND	2	O	AM57xx EMU1
3	-	GND	4	O	AM57xx EMU0
5	-	GND	6	I	AM57xx TCK
7	-	GND	8	O	AM57xx RTCK
9	-	GND	10	O	AM57xx TDO
11	-	GND	12	-	AM57xx VCC / 1.8V
13	-	GND	14	I	AM57xx TDI
15	-	GND	16	I	AM57xx TRST
17	-	GND	18	I	AM57xx TMS
19	-	GND	20	-	GND
21	-	GND	22	O	FPGA VREF / VCCAUX / 1.8V
23	-	GND	24	I	FPGA TMS
25	-	GND	26	I	FPGA TCK
27	-	GND	28	O	FPGA TDO
29	-	GND	30	I	FPGA TDI
31	-	GND			

This header, J2, can be removed for production units; please contact Critical Link at info@criticallink.com for details.

ELECTRICAL CHARACTERISTICS

Table 9: Electrical Characteristics

Symbol	Parameter	Conditions	Min	Typ	Max	Units
V_5	Voltage supply, 5 volt input.		4.5	5	5.25	Volts
I_5	Quiescent Current draw, 5 volt input			TBS ^{1,2}	TBS ^{1,2}	mA
I_{5-max}	Max current draw, positive 5 volt input.			TBS ^{1,2}	TBS ^{1,2}	mA
F_{CPU}	CPU internal clock Frequency (PLL output)		1500	1500	1500	MHz
F_{EMIFA}	DDR3 bus frequency, each bank		-	533	-	MHz
$I_{o3.3}$	Max output current 3.3V output				1000	mA
$I_{o1.8}$	Max output current 1.8V output				1500	mA
	1. Power utilization of the MitySOM-AM57F is heavily dependent on end-user application. Major factors include: ARM CPU PLL configuration, DSP Utilization FPGA utilization, and external DDR3L RAM utilization. 2. For power utilization information please visit our Redmine Wiki pages on support.criticallink.com					

ORDERING INFORMATION

The following table lists the standard module configurations. For shipping status, availability, and lead time of these or other configurations please contact Critical Link at info@criticallink.com.

Table 10: Standard Model Numbers

Module P/N	CPU	FPGA	NOR	RAM Bank 1	RAM Bank 2	Component Temperature Rating
5728-PJ-4AA-RC	AM5728	7A15T	32MB	1 GB	1 GB	0°C to 70°C
5748-PJ-4AA-RC	AM5748	7A15T	32MB	1 GB	1 GB	0°C to 70°C
5748-PJ-4AA-RI	AM5748	7A15T	32MB	1 GB	1 GB	-40°C to 85°C
5749-PJ-4AA-RC	AM5749	7A15T	32MB	1 GB	1 GB	0°C to 70°C
5749-PJ-4AA-RI	AM5749	7A15T	32MB	1 GB	1 GB	-40°C to 85°C
5749-PM-4AA-RC	AM5749	7A50T	32MB	1 GB	1 GB	0°C to 70°C
5749-PM-4AA-RI	AM5749	7A50T	32MB	1 GB	1 GB	-40°C to 85°C

MECHANICAL INTERFACE

The dimension of the MitySOM-AM57F are 88.000mm (~3.46in) x 69.417mm (~2.73in) and features two mounting holes at the rear of the module where the 100-pin connector, J3, is. If a heat spreader/sink solution is required Critical Link recommends placing two additional mounting holes near the MXM connector as shown in Figure 2.

The mechanical outline of the MitySOM-AM57F is illustrated in Figure 2, as shown below.

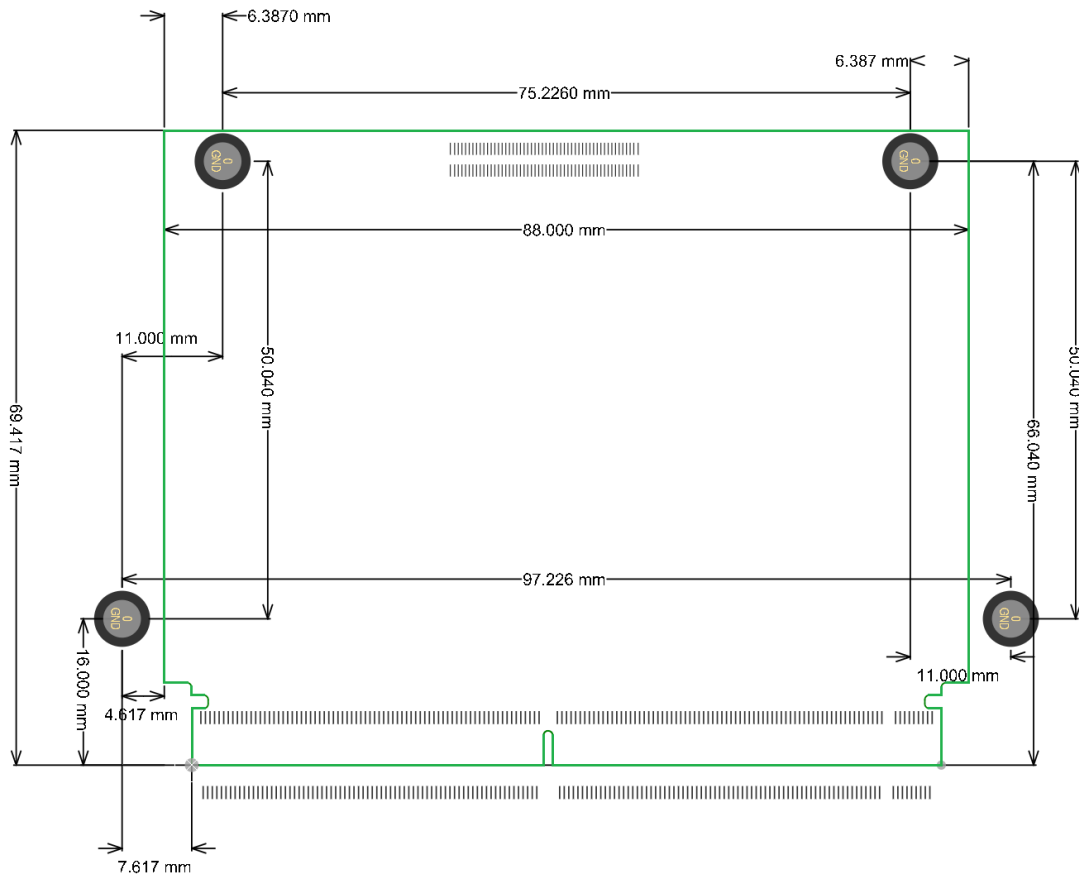


Figure 2 MitySOM-AM57F Mechanical Outline

REVISION HISTORY

Rev	Date	Change Description
1A	17-JUN-2020	Initial Release
1B	7-AUG-2020	Update Fig 2, Update MMC1 pins voltage to 3.3V (table 6) and set FMC pins 80-90 as Reserved (NC) (table 7). Update AM57xx USB Interfaces section
1C	4-Nov-2020	Update Debug LEDs section to clarify usage. Update AM57xx Multifunction Input/Output (MFIO) Interfaces to clarify voltage domains. Update AM57xx USB Interfaces to clarify AC coupling. Swap USB SS TX/RX pinout Update Pin 125 (FPGA_DONE) Fix Pin 247 spelling (PR1_ECAP0ECAP_CAPIN_APWM_O) Fix Pin 19 text direction Changed PMIC to PMIO, "Dedicated signals mapped to the Power Management IC (PMIO)" Add missing mux options for Pin E4-4 (WAKEUP1) and update type to MFIO Update Max DDR size to 4GB
1D	14-Jan-2021	Green LED no longer shows cpu activity
1E	23-Sep-2021	Update IO pin counts
1F	2-Dec-2021	Updated Table 6 to correctly map N/P polarity of IO_34_L3_P/N, IO_34_L5_P/N, IO_34_L7_P/N, IO_34_L8_P/N, IO_34_L9_P/N, IO_34_L11_P/N, IO_34_L12_P/N, IO_34_L14_P/N, IO_34_L18_P/N, IO_34_L21_P/N Updated Table 6 to include MRCC and SRCC pin functions. Updated Table 6 to include ADXXN/P functions. Updated Figure 1 with more generic MXM connector recommendation

X-ON Electronics

Largest Supplier of Electrical and Electronic Components

Click to view similar products for [System-On-Modules - SOM category](#):

Click to view products by [Critical Link manufacturer](#):

Other Similar products are found below :

[COMX-CORE-310](#) [COMX-P4040-4G-ENP2](#) [PICOIMX6U10R1GBNI4G](#) [PICOIMX6U10R1GBNI4GBW](#) [MC27561-TIGER](#) [MC27561-LION](#) [CC-WMX6UL-SMPL](#) [CB-52-PUS-110-SX](#) [BD63725BEFV-EVK-002](#) [5728-PJ-4AA-RI](#) [A00150](#) [COMX_P4080](#) [A20-SOM-EVB](#) [RK3188-SOM](#) [RK3188-SOM-4GB](#) [100-1225-1](#) [PICOIMX6Q10R1GBNI4G](#) [Nit6Q](#) [A20-SOM-N8GB](#) [PER-TAICX-A10-001](#) [PER-TAIX2-A10-2280](#) [EDL-mPCIe-MA2485](#) [SOM-5897C7-U0A1E](#) [SOM-6896C7-U2A1E](#) [SCM180-Dual-2G_Industrial](#) [3354-HX-X38-RC](#) [5728-PJ-4AA-RC](#) [6455-JE-3X5-RC](#) [ET876-X7LV](#) [IFC6301-10-P2](#) [IFC6502-00-P1](#) [IFC67A1-00-P1](#) [IFC6701-00-P1](#) [iW-G33M-SCMQ-4L002G-E008G-BII](#) [PWSE1000200B](#) [CS-DEPTHAI-04](#) [MTQ-LNA7-B02](#) [MYC-C8MMQ6-8E2D-180-C](#) [MYD-C4378-4E512D-100-I](#) [MOD5213-100IR](#) [MODM7AE70-100IR](#) [A20-SOM](#) [A20-SOM204-1G](#) [A20-SOM204-1GS16ME16G-MC](#) [AM3352-SOM-EVB](#) [BS1-IC](#) [BS2-IC](#) [102110278](#) [SLS16Y2_792C_256R_256N_0SF_I](#) [SLS12RT52_528C_0R_4QSPI_0SF_I](#)