

# Miniature limit switch

## → 8380

- Thermoplastic case
- Compact dimensions
- Metal inserts in fixing holes
- Heads have 4 possible positions at 90°
- Screw terminals on internal connector (plug-in body)
- -30 °C version (option)
- Optional heads: flexible metal lever 83806, steel roller plunger (83805)



### Main specifications

	Protected metal plunger	Plastic roller plunger with threaded barrel	Rotary head, momentary action to right and left
<b>Housing</b>			
Thermoplastic			
<b>Connections</b>			
Screw			
<b>General characteristics</b>	<b>83 800 101</b>	<b>83 802 001</b>	<b>83 803 001</b>
Minimum operating force N (N.m)	10	10	(0.07)
Minimum total travel force N (N.m)	22	22	(0.18)
Minimum operating travel (mm)	1.5	1.5	15°
Differential travel (mm)	0.4	0.4	6°
Maximum total travel (mm)	5	5	60°
Mechanical life (operations)	10 <sup>7</sup>	10 <sup>7</sup>	10 <sup>7</sup>
Operating temperature (°C)	-10 → +70	-20 → +70	-20 → +70
Protection degree	IP65	IP55	IP55
Weight (g)	50	57	60

### General characteristics

Conformity to standards	IEC/EN 60947-5-1
Protection against electric shock	IEC 61140 class II
Assigned impulse voltage (Uimp) V	2500
Assigned insulation voltage (Ui) V	250
Thermal current (Ith) A	10
Assigned operating current (Ie) A	5
Assigned working characteristics (EN 60 947.5.1, UL 508)	B300 = AC15 240 V 1.5 A / 120 V 3 A Alternating current R300 = DC13 250V 0.11 A / 125 V 0.22 A Direct current
Connections	Screw terminals - max. wire cross-section 2.5 mm <sup>2</sup> (solder terminals: consult us)
Cable entry	For No. 9 sealing gland, 15.2 Ø, 1.411 pitch
Approvals	UL/CSA on request

### Principles

#### Function

Four-terminal double break two-way contact element (form Za) with snap action. The contacts must be of the same polarity.

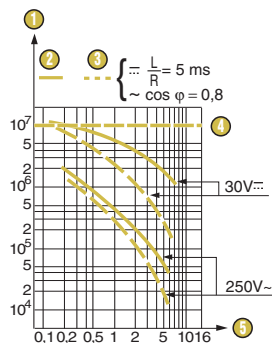
#### 83 803



#### Other types



### Curves

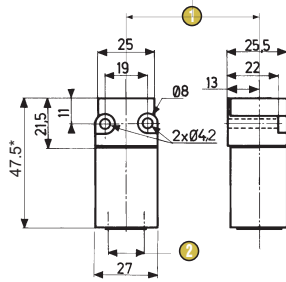


- ① Number of operations
- ② Resistive circuit
- ③ Inductive circuit
- ④ Mechanical life limit
- ⑤ Current in Amps

**Dimensions**

**→ Product**

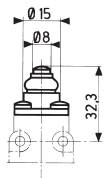
**Casing**



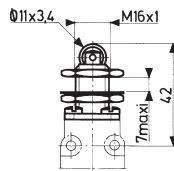
\* Allow 13 mm clearance to plug or to unplug when fixed

- 1 Axis of heads
- 2 For No. 9 sealing gland

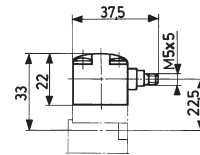
**83 800 1**



**83 802**

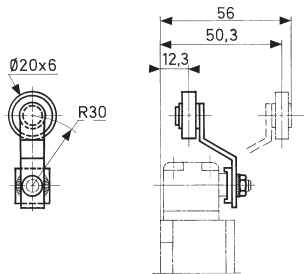


**83 803**

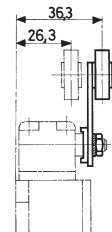


**→ Accessories**

**79 210 997 (for 83 803)**

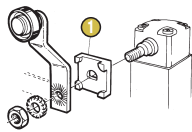


**79 210 998 (for 83 803)**

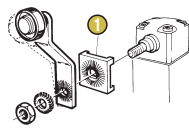


Galvanized, passivated steel lever  
Thermoplastic roller  
Supplied with nut, washer and locating block loose

**Lever angular settings**



- 1 Block  
Adjustable in 90° steps



- 1 Block turned  
Adjustable in 6° steps

**Warning:**

The product information contained in this catalogue is given purely as information and does not constitute a representation, warranty or any form of contractual commitment. Crouzet Automatismes SAS and its subsidiaries reserve the right to modify their products without notice. It is imperative that we should be consulted over any particular use or application of our products and it is the responsibility of the buyer to establish, particularly through all the appropriate tests, that the product is suitable for the use or application. Under no circumstances will our warranty apply, nor shall we be held responsible for any application (such as any modification, addition, deletion, use in conjunction with other electrical or electronic components, circuits or assemblies, or any other unsuitable material or substance) which has not been expressly agreed by us prior to the sale of our products.

## X-ON Electronics

Largest Supplier of Electrical and Electronic Components

*Click to view similar products for [Limit Switches](#) category:*

*Click to view products by [Crouzet](#) manufacturer:*

Other Similar products are found below :

[LZG1](#) [LZL1-6C](#) [622EN114-R](#) [622EN224-6B](#) [622EN230](#) [622EN237-R](#) [622EN85-RB](#) [7LS51](#) [83547001](#) [83840001](#) [83881130](#) [8AS42](#)  
[8LS125-4PG](#) [914CE3-3L1](#) [915PA10](#) [91MCE16-P2O](#) [924CE1-T3](#) [924CE1-T9A](#) [924CE31-Y20-X5](#) [924CE31-Y3L1](#) [GL-10054](#) [GL-85714](#)  
[GLDB03C-6](#) [GLZ324](#) [H3141CAKAA](#) [D4GS-N1T-3](#) [E3102BAAAA](#) [1EN329-R](#) [1LS-J50](#) [1LS-J51](#) [201SN1A1](#) [21EN275-R2](#) [21EN314-6](#)  
[221CH54-RB](#) [221CH55-RB](#) [221EN5-R](#) [914CE16-6AN14](#) [924CE19-S3L1](#) [924CE2-T25A](#) [924CE2-Y12](#) [924CE3-S3](#) [SHL-W255-01](#)  
[SHLW255L6MD730M](#) [SHL-W55](#) [9PA42-4](#) [LS-85637](#) [LSA3K1](#) [LSF1A4](#) [LSJ1A](#) [LSU1A4](#)