

Universal limit switches

→ 8384 standard

→ 8384 with positive break operation

General characteristics

Conformity to standards	IEC / EN 60947-5-1, including Annex K for version with positive break operation
Version	Single-pole
Degree of protection IEC 60529	IP66
Connections	Saddle washer and screw M3.5
Wire max. cross-section	2 mm ²
Electrical protection	Internal earth terminal
Cable entry	3 entries for No. 13 sealing gland, 20.4 Ø, 1.411 pitch (supplied with 2 screw plugs)

Universal limit switches

→ 8384 standard

- Metal case
- 3 cables entries
- Heads have 4 possible positions at 90°
- All heads protected by nitrile boot and/or ring



Main specifications

	Steel plunger	Reinforced lever with plastic roller	Stepped adjustment roller lever
Housing			
Action			
Metal			
Snap action			
General characteristics			
Sequence			
Snap action			
	83 840 001	83 841 001	83 842 001
Mechanical characteristics			
Minimum operating force (N)	10	15	8
Minimum operating torque (N.m)	-	-	-
Minimum total travel force (N)	22	25	15
Minimum total travel torque (N.m)	-	-	-
Mechanical life (operations)	10 ⁷	10 ⁷	10 ⁷
Operating temperature (°C)	-10 → +70	-10 → +70	-10 → +70
Weight (g)	310	310	310
Comments			
Accessories for 83 843 0 (see Dimensions - Accessories)			
Galvanized, passivated steel lever			
Thermoplastic roller			
Supplied with nut, washer and locating block loose			

General characteristics

Assigned impulse voltage (U _{imp}) V	4000
Assigned insulation voltage (U _i) V	500
Thermal current (I _{th}) A	10
Assigned working characteristics (EN 60 947.5.1)	A300 = AC15 240 V 3 A / 120 V 6 A Alternating current Q150 = DC13 125 V 0.55 A Direct current

Product adaptations



- -40 °C operating temperature (silicone version)
- Steel roller levers
- UL approval : consult us



Adjustable roller lever	Adjustable roller lever with idle-return	Rotary head, momentary action to right and left	Steel roller plunger	Flexible metal lever
83 842 101	83 842 201	83 843 001	83 845 001	83 846 001
8	8	-	10	1.5
-	-	0.2	-	-
15	15	-	22	2.5
-	-	0.33	-	-
10 ⁷	10 ⁷	10 ⁷	10 ⁷	10 ⁷
-10 → +70	-10 → +70	-20 → +70	-10 → +70	-10 → +70
310	310	310	300	310

Principles

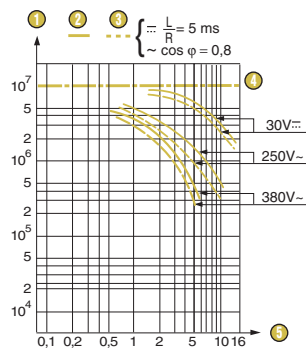
Function

Four-terminal double break two-way contact element (form Za). The contacts must be of the same polarity.



Curves

Operating curve for standard version

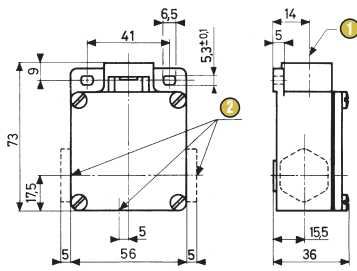


- ① Number of operations
- ② Resistive circuit
- ③ Inductive circuit
- ④ Mechanical life limit
- ⑤ Current in Amps

Dimensions

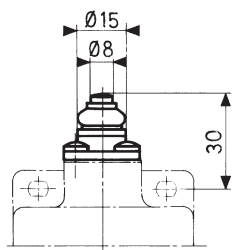
→ Product

Body

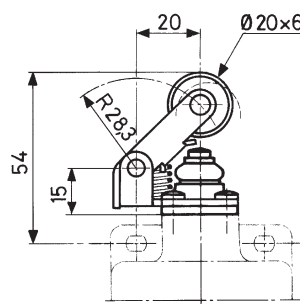


- 1 Axis of heads
- 2 No. 13 sealing gland

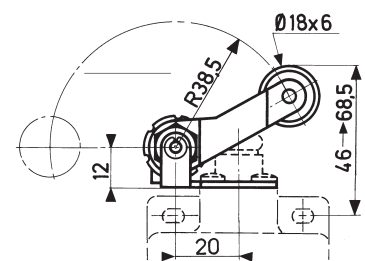
83 840 0



83 841 0

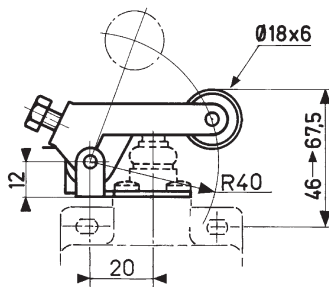


83 842 0

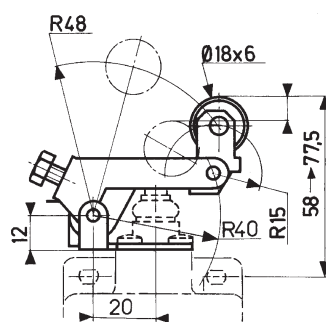


Adjustable in 8° steps

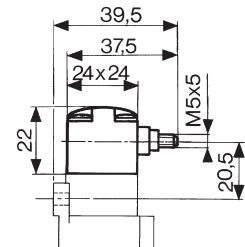
83 842 1



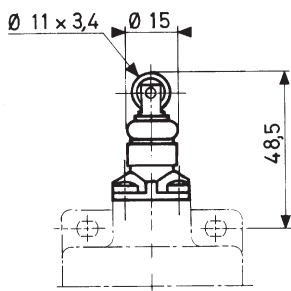
83 842 2



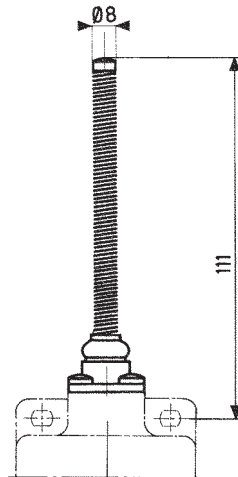
83 843 0



83 845 0

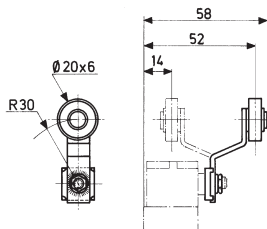


83 846 0

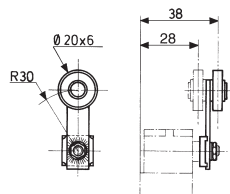


→ Accessories

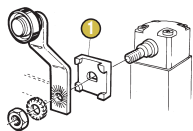
79 210 997 (for 83 843 0)



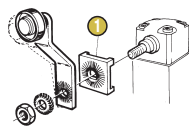
79 210 998 (for 83 843 0)



Lever angular settings



1 Block Adjustable in 90° steps



1 Block turned Adjustable in 6° steps

Warning:

The product information contained in this catalogue is given purely as information and does not constitute a representation, warranty or any form of contractual commitment. Crouzet Automatismes SAS and its subsidiaries reserve the right to modify their products without notice. It is imperative that we should be consulted over any particular use or application of our products and it is the responsibility of the buyer to establish, particularly through all the appropriate tests, that the product is suitable for the use or application. Under no circumstances will our warranty apply, nor shall we be held responsible for any application (such as any modification, addition, deletion, use in conjunction with other electrical or electronic components, circuits or assemblies, or any other unsuitable material or substance) which has not been expressly agreed by us prior to the sale of our products.

Universal limit switches

→ 8384 with positive break operation

- Metal case
- 3 cables entries
- Heads have 4 possible positions at 90°
- All heads protected by nitrile boot and/or ring

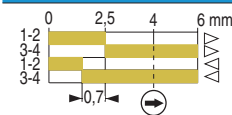


Main specifications

	Steel plunger	Reinforced lever with plastic roller
Housing		
Metal		
Action		
Snap action		
General characteristics		
Sequence		
Snap action		
Mechanical characteristics		
Minimum operating force (N)	10	15
Minimum operating torque (N.m)	-	-
Minimum positive opening force (N)	10	15
Min. positive opening torque (N.m)	-	-
Minimum total travel force (N)	22	25
Minimum total travel torque (N.m)	-	-
Mechanical life (operations)	10 ⁷	10 ⁷
Operating temperature (°C)	-10 → +70	-10 → +70
Weight (g)	310	310
Comments		
Accessories for 83 843 7 (see Dimensions - Accessories)		
Galvanized, passivated steel lever		
Thermoplastic roller		
Supplied with nut, washer and locating block loose		

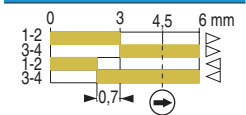
Steel plunger

83 840 701



Reinforced lever with plastic roller

83 841 701



General characteristics

Assigned impulse voltage (Uimp) V	4000
Assigned insulation voltage (Ui) V	500
Thermal current (Ith) A	2.5
Assigned working characteristics (EN 60 947.5.1)	C300 = AC15 240 V 0.75 A / 120 V 1.5 A Alternating current R300 = DC13 250 V 0.11 A / 125 V 0.22 A Direct current
Short circuit test	Conforms to IEC 60947.5.1 paragraph 8.34
Current peak	1000 A at 250 VAC 0.5 < cos φ < 0.7
Short circuit protection device	Fuse 10 AgG

Product adaptations



- -40 °C operating temperature (silicone version)
- Steel roller levers
- UL approval : consult us

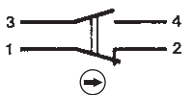


Stepped adjustment roller lever	Adjustable roller lever	Adjustable roller lever with idle-return	Rotary head, momentary action to right and left	Steel roller plunger
83 842 701	83 842 801	83 842 901	83 843 701	83 845 701
8	8	8	-	10
-	-	-	0.2	-
10	10	10	-	10
-	-	-	0.2	-
15	15	15	-	22
-	-	-	0.33	-
10 ⁷	10 ⁷	10 ⁷	10 ⁷	10 ⁷
-10 → +70	-10 → +70	-10 → +70	-20 → +70	-10 → +70
310	310	310	310	300

Principles

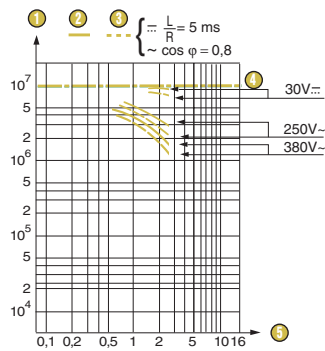
Function

Four-terminal double break two-way contact element (form Za) with positive break operation on NC contacts (1-2) according to IEC/EN60947-5-1 Annex K. The contacts must be of the same polarity.



Curves

Operating curve for positive break version

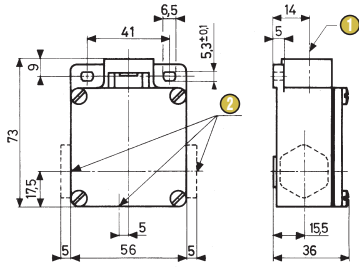


- ① Number of operations
- ② Resistive circuit
- ③ Inductive circuit
- ④ Mechanical life limit
- ⑤ Current in Amps

Dimensions

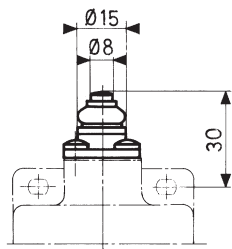
→ Product

Body

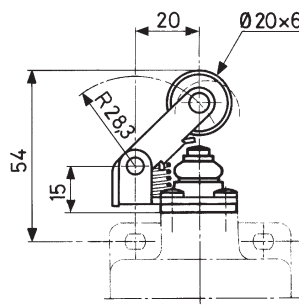


- ① Axis of heads
- ② No. 13 sealing gland

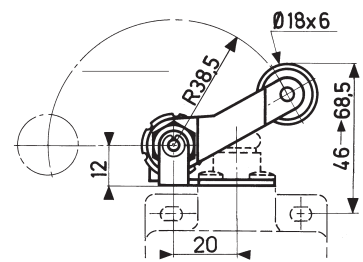
83 840 7



83 841 7

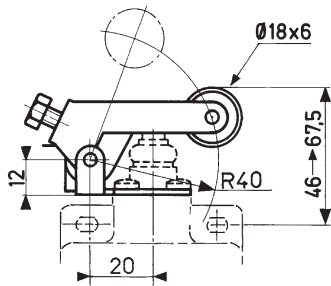


83 842 7

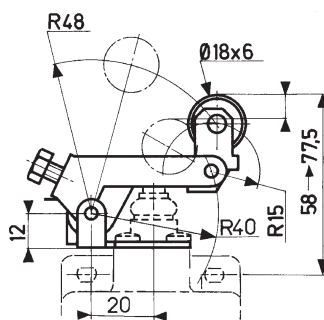


Adjustable in 8° steps

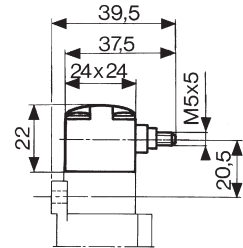
83 842 8



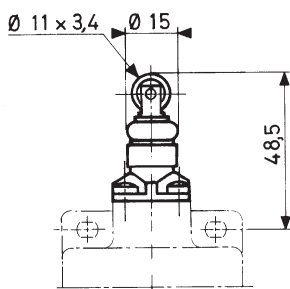
83 842 9



83 843 7

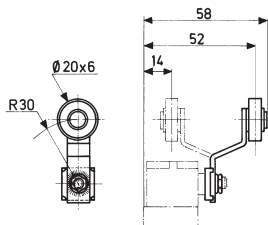


83 845 7

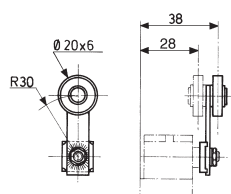


→ Accessories

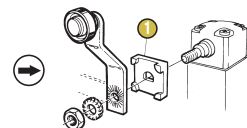
79 210 997 (for 83 843 7)



79 210 998 (for 83 843 7)



Lever angular settings



- ① Block
- Adjustable in 90° steps
Block 1 must not be mounted the other way round

Warning:

The product information contained in this catalogue is given purely as information and does not constitute a representation, warranty or any form of contractual commitment. Crouzet Automatismes SAS and its subsidiaries reserve the right to modify their products without notice. It is imperative that we should be consulted over any particular use or application of our products and it is the responsibility of the buyer to establish, particularly through all the appropriate tests, that the product is suitable for the use or application. Under no circumstances will our warranty apply, nor shall we be held responsible for any application (such as any modification, addition, deletion, use in conjunction with other electrical or electronic components, circuits or assemblies, or any other unsuitable material or substance) which has not been expressly agreed by us prior to the sale of our products.

X-ON Electronics

Largest Supplier of Electrical and Electronic Components

Click to view similar products for [Limit Switches](#) category:

Click to view products by [Crouzet](#) manufacturer:

Other Similar products are found below :

[5ML1-E1](#) [5ML31](#) [LZG1](#) [LZL1-6C](#) [622EN114-R](#) [622EN18-6](#) [622EN224-6B](#) [622EN230](#) [622EN237-R](#) [622EN69-3](#) [622EN85-RB](#) [MA-10019](#)
[6PA109](#) [7LS51](#) [83547001](#) [83725002](#) [83830001](#) [83840701](#) [83841001](#) [83881140](#) [8AS42](#) [8LS10](#) [8LS125-4PG](#) [8LS152-4PGN20](#) [914CE16-](#)
[3A](#) [914CE3-3L1](#) [915PA10](#) [91MCE16-P2O](#) [924CE16-Y3](#) [924CE1-S6](#) [924CE1-T25A](#) [924CE1-T3](#) [924CE1-T9A](#) [924CE2-T9](#) [924CE31-Y20-](#)
[X5](#) [924CE31-Y3L1](#) [GL-10054](#) [GLDB03C-6](#) [GLDC05C](#) [GLZ324](#) [H3141CAKAA](#) [RDI-G-L5B](#) [DD-10000](#) [DT-2R3-A7](#) [14CE16-3N28](#)
[14CE18-N15](#) [151ML3-E1](#) [E3102BAAAA](#) [BFL1-AW1-S](#) [1EN329-R](#)