

Crouzet Touch HMI for em4 & Millennium3



CROUZET TOUCH PANELS

A COMPLETE HMI RANGE FOR INDUSTRIAL APPLICATIONS



Learn more about the Crouzet Touch Panels



	4.3"	7"	9.7"	4.3"	7"
	PERFORMANCE			ESSENTIAL	
Type	CTP104-E	CTP107-E	CTP110-E	CT104	CT107
Part Number	88 970 554	88 970 564	88 970 574	88 970 524	88 970 534
Certification	CE-UL	CE-UL	CE	CE	CE
Ethernet	✓	✓	✓	-	-
USB Host	✓	✓	✓	-	✓
RS232 / RS485	✓	✓	✓	✓	✓
Conformance coated	✓	✓	✓	-	-
Email & csv	✓	✓	✓	-	-
Enhanced security	✓	✓	✓	-	-
Combo button	✓	✓	✓	-	-
Recipe Import / Export	✓	✓	✓	-	-



NEW FEATURES



EMAIL & CSV

› Send e-mails with datalog files (csv) from a data sampling and when an event is triggered



RECIPE IMPORT / EXPORT

› Creating and managing recipes is much easier using the «recipe view» object and system registers available in Crouzet Touch software.



ENHANCED SECURITY

› Enhanced security mode to manage users and classes easily with dedicated system pages.



COMBO BUTTON

› Execute multiple commands with one button.

CROUZET TOUCH SOFT

USER FRIENDLY AND EFFECTIVE SOFTWARE

Crouzet Touch Soft is an intuitive user interface and allows complex applications such as data / event logs, recipe database, alarm handling, tag management, macro computing and pass through functions.

During the project development phase, online / offline simulation allows programme debugging.

IMAGINE AND CONCEIVE YOUR PROJECT IN AN EASY WAY

- › Manage all your HMI project from Crouzet Touch Utility Manager
- › A wide range of tools to help you develop the perfect project
- › Dedicated communication drivers for em4 and Millenium 3 allowing simple addressing and label management
- › Import existing MTP HMI programmes into the new Crouzet Touch Soft

FUNCTION BAR

- › With simple icons

ENHANCED SECURITY

- › By creating access levels for users

ORGANISE YOUR PROJECT

- › Tree and display all object names

CREATE AND DESIGN

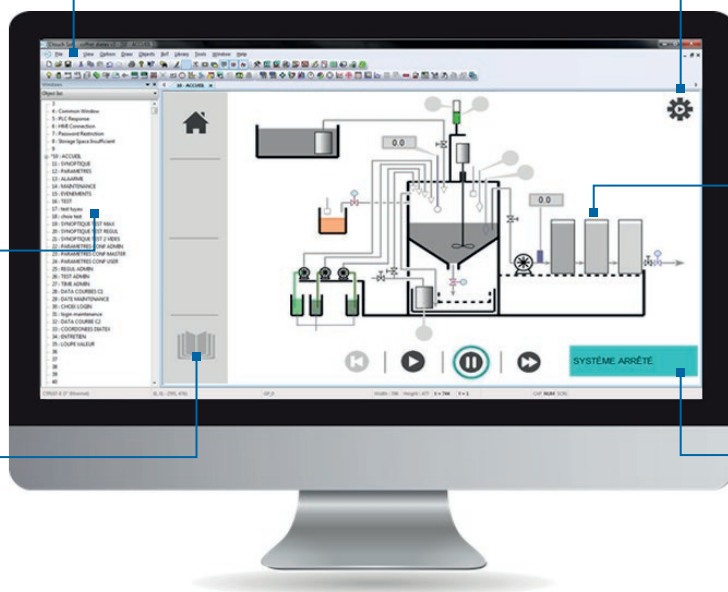
- › Main window makes it easy to create any functional object

CUSTOMISE YOUR APPLICATION

- › Create your own library and import pictures

LABEL TAG

- › Allows use of up to 8 different languages



SOFTWARE AVAILABLE IN ENGLISH, FRENCH, ITALIAN, GERMAN, SPANISH



MORE TOOLS

PERFORMANCE/ESSENTIAL		
Part Number	Description	Details
88 970 591	Crouzet Touch Soft + cables	+ soft + usb / micro usb cable + Ethernet cable



EASY DIAGNOSER

- › Analysing and diagnosing communication between HMI and PLC



EASY SIMULATOR

- › Allows online / offline simulation of your HMI application.



PASS THROUGH

- › Allows connection of the PLC to the HMI allowing debugging of the system.



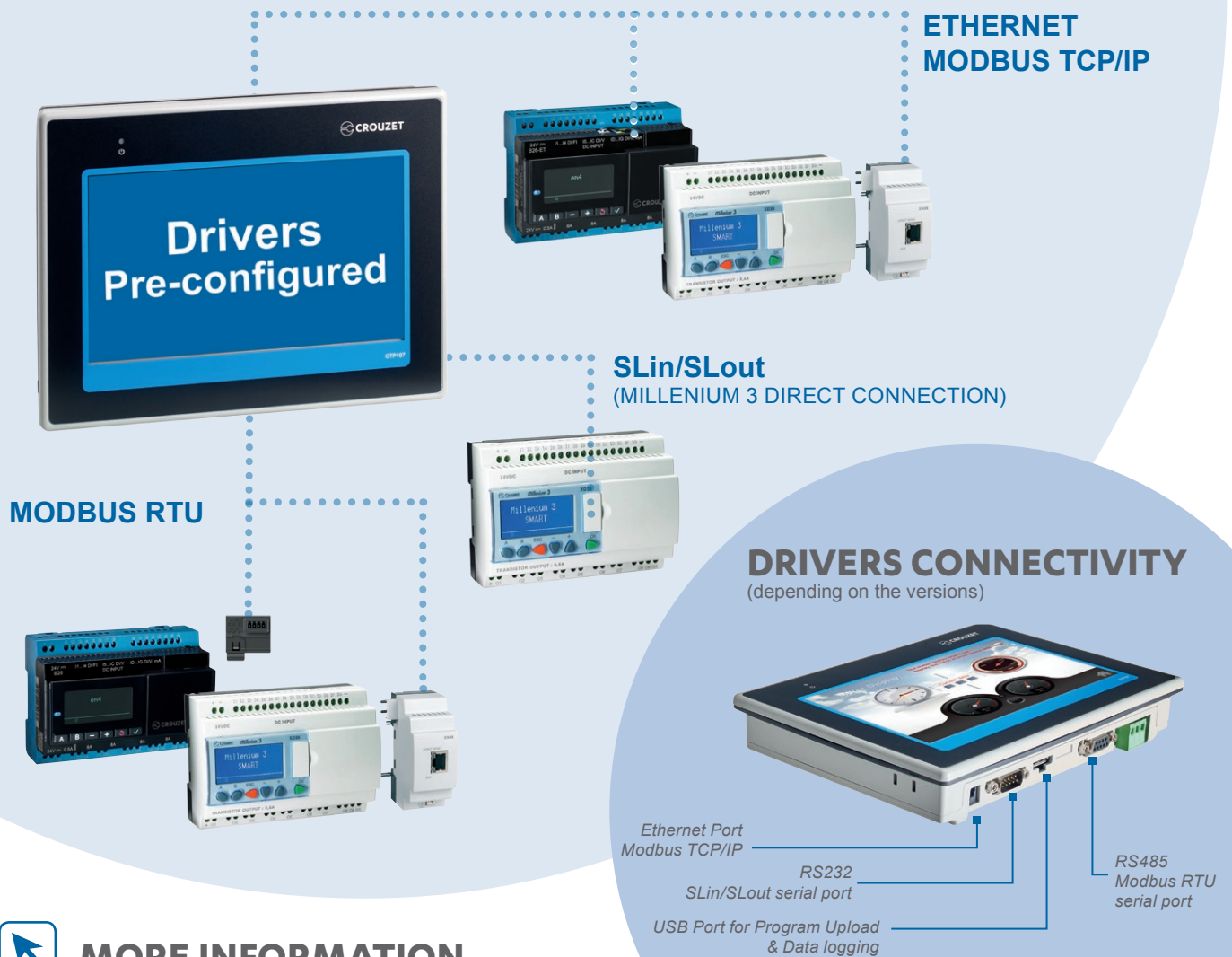
VNC

- › Allows network connection to the HMI via VNC client on PC or mobile phone.

CROUZET TOUCH DRIVERS

EASY CONFIGURATION DUE TO PRE-CONFIGURED COMMUNICATION DRIVERS

- › Modbus RTU
- › Modbus TCP/IP (Ethernet)
- › SLin/SLout



 **MORE INFORMATION**

em4 NANO-PLC

The easiest and most intuitive way to control and remotely manage your applications:

- › Up to 46 inputs/outputs
- › 24 V $\overline{\text{---}}$, 12 bits 4-20 mA inputs
- › Modbus RTU (Slave/Master*)
- › Modbus TCP/IP (Client/Server)
- › Communication 3G (SMS/mail/FTP)



Millenium3 LOGIC CONTROLLER

The best logic controller for automating your equipment:

- › Up to 50 inputs/outputs
- › 12 - 24 V $\overline{\text{---}}$, 24 - 230 V \sim
- › LADDER, FDB & SFC programming language
- › Modbus RTU/ASCII (Slave)
- › Modbus TCP/IP (Server)



* Available: mid of 2017

CROUZET TOUCH REFERENCES

HMI COMMUNICATION CABLES

Based on the type of communication, select:

- 1 HMI Crouzet Touch panel
- 2 Associated communication type

PERFORMANCE

ESSENTIAL



Communication type	CTP104-E 88 970 554	CTP107-E 88 970 564	CTP110-E 88 970 574	CT104 88 970 524	CT107 88 970 534
<p>em4 Ethernet Modbus extension</p> <p>Ethernet Modbus TCP/IP</p>	88 970 508			-	
<p>em4 Modbus interface</p> <p>RS485 Modbus RTU</p>	88 980 171	88 980 172		88 980 171	
<p>Modbus extension</p> <p>RS485 Modbus RTU</p>	88 970 503	88 970 504		88 970 503	

CABLE

MILLENIUM 3 KITS

- › HMI Crouzet Touch panel
- › Cable SLin/SLout



Communication type	CTP104-E	CTP107-E	CTP110-E	CT104	CT107
<p>Direct connection M3</p> <p>SLin/SLout</p>	88 970 553	88 970 563	88 970 573	88 970 523	88 970 533

KIT

COMPLETE KITS FOR AN OFF THE SHELF SOLUTION

- › HMI
- › em4/Millennium 3 controller
- › Programming and connection cables
- › Crouzet Touch Soft

<p>4.3"</p> <p>CTP104-E</p> <p>XD10R</p> <p>88 970 555</p>	<p>7"</p> <p>CTP107-E</p> <p>XD26R</p> <p>88 970 566</p>	<p>7"</p> <p>CTP107-E</p> <p>em4 Ethernet</p> <p>88 970 567</p>	<p>9.7"</p> <p>CTP110-E</p> <p>em4 Ethernet</p> <p>88 970 577</p>	<p>7"</p> <p>CT107</p> <p>XD26R</p> <p>88 970 536</p>	<p>4.3"</p> <p>CT104</p> <p>XD10R</p> <p>88 970 525</p>
--	--	---	---	---	---

CROUZET TOUCH TECHNICAL DATA



		PERFORMANCE			ESSENTIAL	
		CTP104-E	CTP107-E	CTP110-E	CT104	CT107
		88 970 554	88 970 564	88 970 574	88 970 524	88 970 534
Display	Size	4.3"	7"	9.7"	4.3"	7"
	Resolution	480 x 272	800 x 480	1024 x 768	480 x 272	800 x 480
	Brightness	400 cd/m ²	400 cd/m ²	350 cd/m ²	400 cd/m ²	300 cd/m ²
	Front panel bezel colour	Pantone Process Black C, Blue Pantone 285C	Pantone Process Black C, Blue Pantone 285C	Pantone Process Black C, Blue Pantone 285C	Pantone Process Black C	Pantone Process Black C
	Display colours	16.7 M	16.7 M	262 K	16.7 M	16 M
	LCD viewing angle (Top/Bottom/Left/Right)	30/50/50/50	70/50/70/70	60/70/70/70	50/70/70/70	70/50/70/70
Memory	Processor	32 Bit RISC Cortex-A8, 600 MHz	32 Bit RISC Cortex-A8, 600 MHz	32 Bit RISC Cortex-A8, 1 GHz	32 Bit RISC Cortex-A8, 600 MHz	32 bit RISC Cortex-A8, 600 MHz
	Storage memory	128 MByte	128 MByte	512 MByte	128 MByte	128 MByte
I/O Port	RAM memory	128 MByte	128 MByte	256 MByte	128 MByte	128 MByte
	USB	Host USB 2.0	Host USB 2.0	Host USB 2.0	Client micro USB 2.0	Host USB 2.0, Client micro USB 2.0
	Ethernet	RJ45 type, 10/100 Mbit/s, MDI/MDIX	RJ45 type, 10/100 Mbit/s, MDI/MDIX	2 x RJ45 type, 10/100/1000 Mbit/s, MDI/MDIX	N/A	N/A
	Port RS232	COM1 male	COM1 male	COM1 male, COM3 male. Only Tx & Rx (no RTS/CTS) may be used for COM1 when COM3 is also used	COM1 male	COM1 male
Specification	Port RS485	COM1 2/4 Wires male, COM3 2 Wires male	COM1 2/4 Wires male, COM3 2 Wires male	COM2 2/4 Wires female, COM3 2 Wires female	COM1 2/4 Wires male, COM3 2 Wires male	COM2 2/4 Wires male
	Weight	Approximately 0.25 kg	Approximately 0.6 kg	Approximately 0.85 kg	Approximately 0.25 kg	Approximately 0.52 kg
	Dimensions (W x H x D)	128 x 102 x 32 mm / 5.04 x 4.02 x 1.26"	200.3 x 146.3 x 34 mm / 7.89 x 5.77 x 1.34"	260.6 x 203.1 x 36.5 mm / 10.26 x 8 x 1.44"	128 x 102 x 32 mm / 5.04 x 4.02 x 1.26"	200.4 x 146.5 x 34 mm / 7.89 x 5.77 x 1.34"
	Vesa Mount	N/A	N/A	75 x 75 mm / 2.95 x 2.95"	N/A	N/A
Environment	Panel cutout	119 x 93 mm / 4.69 x 3.66"	192 x 138 mm / 7.56 x 5.43"	250 x 192 mm / 9.84 x 7.56"	119 x 93 mm / 4.69 x 3.66"	192 x 138 mm / 7.56 x 5.43"
	Conformance coated	Yes	Yes		N/A	N/A
	Enclosure	Plastic			Plastic	
	Storage temperature	-20 °C → +60 °C / -4°F → +140°F			-20 °C → +60 °C / -4°F → +140°F	
Certification	Operating temperature	0 °C → +50 °C / +32°F → +122°F			0 °C → +50 °C / +32°F → +122°F	
	Relative humidity	10 → 90% max. (no condensation or dripping water)			10 → 90% max. (no condensation or dripping water)	
UL	cULus Listed	cULus Listed	N/A	N/A		
Products certification	CE			CE		

Crouzet Touch Soft

CONTACT US

Email: relationclient@crouzet.com



FOLLOW US!



X-ON Electronics

Largest Supplier of Electrical and Electronic Components

Click to view similar products for [Controllers](#) category:

Click to view products by [Crouzet](#) manufacturer:

Other Similar products are found below :

[CV500SLK21](#) [81550401](#) [H2CRSAC110B](#) [R88A-CRGB003CR-E](#) [R88ARR080100S](#) [R88A-TK01K](#) [MR-50LF+](#) [E53E01](#) [E53E8C](#)
[E5C4Q40J999FAC120](#) [E5GNQ03PFLKACDC24](#) [B300LKL21](#) [NSCXDC1V3](#) [NT20SST122BV1](#) [C40PEDRA](#) [K31S6](#) [K3TX-AD31A](#)
[89750101](#) [L595020](#) [SRM1-C02](#) [26546803](#) [26546805](#) [H7HP-C8D](#) [PWRA440A](#) [CPM1AETL03CH](#) [3G2A5BI081](#) [3G2A5IA122](#)
[3G2A5LK010E](#) [3G2A5OA223](#) [3G2A5OD211](#) [3G2A5PS223E](#) [3G2A5RM001EV1](#) [3G2A5RT002EV1](#) [3G2A5SP002](#) [3G2A6-ID217](#)
[3G2A6LK202EV1](#) [3G2A9AL004E](#) [32-436](#) [C200HETL01E](#) [C200PCPD024](#) [KM50-E1-FLK](#) [3G2A5AD001](#) [3G2A5BI051](#) [3G2A5IA121](#)
[3G2A5ID112](#) [3G2A5ID213](#) [3G2A5ID219](#) [3G2A5MR431](#) [3G2A5OC221](#) [3G2A5PS222E](#)