

› Accessories for Millenium Evo & em4 Modbus RS485 Interface

- › Modbus RTU or ASCII RS485 master / slave standard widely used in industry
- › Polarize or not your Modbus network according to your needs
- › The removable connector allows to unplug a product without cutting the network
- › Include End Of Line resistor
- › Direct connection with screw terminals without the need external accessories



Modbus RS485 P

Modbus RS485

Product selection		
Type	Polrization inside	Part number
Modbus RS485 P Interface	Yes	88 980 122
Modbus RS485 Interface	No	88 980 123

	Modbus RS485 P	Modbus RS485
--	----------------	--------------

Specific characteristics		
Part number	88 980 122	88 980 123
Finish	Glossy black	
Color	Black RAL 9011	
Plastic parts Certification	UL94 V0	

General characteristics		
Products certification	CE, cURus	
Conformity with the EMC directive (in accordance with 2014/30/EU)	IEC/EN 61000-6-1 (Residential, commercial and light-industrial environments) IEC/EN 61000-6-2 (Industrial) IEC/EN 61000-6-3 (Residential, commercial and light-industrial environments) IEC/EN 61000-6-4 (Industrial)	
Operation temperature	-20 (-4 °F) → +60 °C (140 °F) (+40 °C (104 °F) in a non-ventilated enclosure)	
Storage temperature	-40 (-40 °F) → +80 °C (176 °F)	
Relative humidity	95% max. (no condensation or dripping water)	
Maximum utilization altitude	Operation: 2000 m Transport: 3000 m	
Resistance to electrostatic discharge	Immunity to ESD IEC/EN 61000-4-2, level 3	
Resistance to HF interference (Immunity)	Immunity to radiated electrostatic fields IEC/EN 61000-4-3, level 3 Immunity to fast transients (burst immunity) IEC/EN 61000-4-4, level 3 Immunity to shock waves IEC/EN 61000-4-5 Radio frequency in common mode IEC/EN 61000-4-6, level 3	
Conducted and radiated emissions (in accordance with EN 55022/11 group 1)	Class B	
Protocol	Master and Slave Modbus	
Hardware compatibility	24 V _{DC} base	
Max. absorbed power	0.5W @ 3.3V	
Type	2 wires	
Line Termination	Included, connectable by wiring	
Line Polarization	Included	Without
Transmission mode	RTU 8 bits ASCII 7 bits	
Parity	None, even, odd	

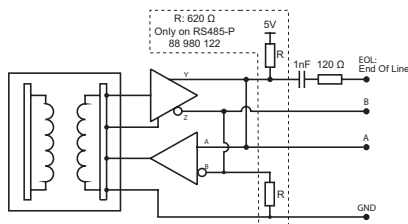
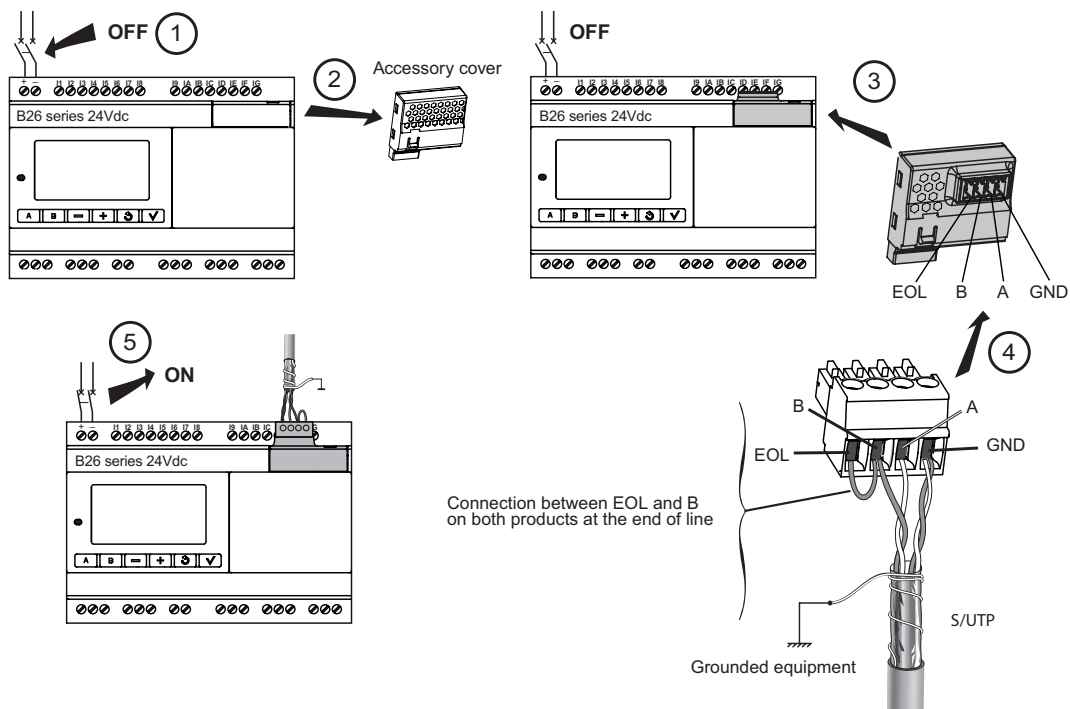
	Modbus RS485 P	Modbus RS485
Stop bit	1 or 2	
Transmission rate	1200, 2400, 4800, 9600, 19200, 28800, 38400, 57600 bauds	
Adressing	From 1 to 247	
Compatible connector (included with the interface)	Phoenix contact: 1916410 Dinkle: EC350V-04P-BK Framatome connectors: 20020004-C042B01LF	
Weight	Without packing: 13 g With packing: 19 g	
Dimensions	Without packing: 35 x 36 x 24 mm / 1.38 x 1.42 x 0.95 inch With packing: 80 x 140 x 30 mm / 3.15 x 5.51 x 1.18 inch	

Schemes
Dimensions (mm)

Interface Modbus



Network configuration



Warning:

The product information contained in this catalogue is given purely as information and does not constitute a representation, warranty or any form of contractual commitment. Crouzet Automatismes SAS and its subsidiaries reserve the right to modify their products without notice. It is imperative that we should be consulted over any particular use or application of our products and it is the responsibility of the buyer to establish, particularly through all the appropriate tests, that the product is suitable for the use or application. Under no circumstances will our warranty apply, nor shall we be held responsible for any application (such as any modification, addition, deletion, use in conjunction with other electrical or electronic components, circuits or assemblies, or any other unsuitable material or substance) which has not been expressly agreed by us prior to the sale of our products.

X-ON Electronics

Largest Supplier of Electrical and Electronic Components

Click to view similar products for [Controllers](#) category:

Click to view products by [Crouzet](#) manufacturer:

Other Similar products are found below :

[61FGPN8DAC120](#) [CV500SLK21](#) [70177-1011](#) [F03-03 HAS C](#) [F03-31](#) [81550401](#) [FT1A-C12RA-W](#) [88981106](#) [H2CAC24A](#) [H2CRSAC110B](#)
[R88A-CRGB003CR-E](#) [R88ARR080100S](#) [R88A-TK01K](#) [DCN1-1](#) [AFP0RT32CT](#) [DRT2ID08C](#) [DTB4896VRE](#) [DTB9696CVE](#)
[DTB9696LVE](#) [E53-AZ01](#) [E53E01](#) [E53E8C](#) [E5C4Q40J999FAC120](#) [E5CWLQ1TCAC100240](#) [E5GNQ03PFLKACDC24](#) [B300LKL21](#)
[NSCXDC1V3](#) [NSH5-232CW-3M](#) [NT20SST122BV1](#) [NV-CN001](#) [OAS-160-N](#) [C40PEDRA](#) [K31S6](#) [K33-L1B](#) [K3MA-F 100-240VAC](#)
[K3TX-AD31A](#) [89750101](#) [L595020](#) [SRM1-C02](#) [SRS2-1](#) [G32X-V2K](#) [26546803](#) [26546805](#) [PWRA440A](#) [CPM1AETL03CH](#) [CV500SLK11](#)
[3G2A5BI081](#) [3G2A5IA122](#) [3G2A5LK010E](#) [3G2A5OA223](#)